

Longevity, climate sensitivity, and conservation status of wetland trees at Black River, North Carolina

- DW Stahle¹ (dstahle@uark.edu)
- JR Edmondson² (jesseedmondson@gmail.com)
- IM Howard¹ (ihowardksu@gmail.com)
- CR Robbins³ (charlesvrobbins@mac.com)
- RD Griffin⁴ (griffin9@umn.edu)
- A Carl⁵ (acarl@tnc.org)
- CB Hall¹ (curthall@uark.edu)
- DK Stahle⁶ (danny.stahle@gmail.com)
- MCA Torbenson¹ (mtorbens@uark.edu)

¹Department of Geosciences, University of Arkansas, Fayetteville, AR 72701

²The Ancient Bald Cypress Consortium, Fayetteville, AR 72701

³Cape Fear River Watch, Wilmington, NC 28401

⁴Department of Geography, University of Minnesota, Minneapolis, MN 55455

⁵The Nature Conservancy, Wilmington, NC 28401

⁶United States Geological Survey, Bozeman, MT 59715

February 27, 2019

Key words: ancient bald cypress, dendrochronology, radiocarbon dating, precipitation proxy, wetland conservation

Words in abstract: 153

Words in manuscript (excluding citations and captions): 3,265

Abstract

Bald cypress trees over 2,000-years old have been discovered in the forested wetlands along Black River using dendrochronology and radiocarbon dating. The oldest bald cypress yet documented is at least 2,624-years old, making *Taxodium distichum* the oldest-known wetland tree species, the oldest living trees in eastern North America, and the fifth oldest known non-clonal tree species on earth. The annual ring-width chronology developed from the ancient Black River bald cypress trees is positively correlated with growing season precipitation totals over the southeastern United States and with atmospheric circulation over the Northern Hemisphere, providing the longest exactly-dated climate proxy yet developed in eastern North America. The Nature Conservancy owns 6,400 ha in their Black River Preserve and the North Carolina legislature is considering establishment of a Black River State Park, but ancient forested wetlands are found along most of this 106 km stream and remain threatened by logging, water pollution, and sea level rise.

Introduction

The forested wetlands of Black River preserve one of the great natural areas of eastern North America (Figures 1 and 2; 34.49686°N, 78.24265°W). Many living bald cypress (*Taxodium distichum*) trees at Black River are over 1,000-years old and new research demonstrates that some are over 2,000-years old, making these trees the oldest in eastern North America and as a species the fifth oldest sexually reproducing non-clonal tree taxa on earth. The Black River

1
2
3 50 has been recognized as “Outstanding Resource Water” by the North Carolina
4
5 51 Department of Environment and Natural Resources and is one of the cleanest
6
7 52 and high quality waterways in North Carolina (NCDPR 2018). There have been
8
9
10 53 notable attempts to preserve this remarkable stream (Hart 1994), including
11
12 54 recognition as a state scenic river, a national scenic river, and a North Carolina
13
14 55 State Park. But these proposals for public conservation have yet to succeed and
15
16
17 56 the private Nature Conservancy (TNC) has led preservation efforts in the Black
18
19 57 River watershed. TNC now owns 6,400 ha in and adjacent to these old-growth
20
21 58 floodplain forests in the Black River Preserve, but thousands of additional
22
23 59 hectares with high quality ancient forests remain to be protected. These
24
25
26 60 unprotected ancient forests and the excellent water quality of the Black River are
27
28 61 both threatened by logging, water pollution, and development. This article uses
29
30
31 62 dendrochronology and radiocarbon dating to document the extreme longevity of
32
33 63 living bald cypress trees at Black River. The discovery of living bald cypress trees
34
35 64 well over 2,000-years old provides quantitative evidence for the ecological
36
37 65 integrity of this wetland system, extends the proxy paleoclimate record of
38
39 66 precipitation variability for the Southeast by over 900 years, and will help
40
41
42 67 advance public and private preservation of the Black River.
43
44
45 68

46
47 69 **Data and Methods**
48

49 70 Dendrochronology and radiocarbon dating were used to document the age
50
51 71 of the living bald cypress trees adjacent to Black River and to develop the proxy
52
53
54 72 tree-ring record of growing season moisture variability for centuries prior to
55
56
57
58
59
60

instrumental observations. Non-destructive core samples were all initially collected for paleoclimatic applications (Stahle *et al.*, 1988, 2012), but subsequent fieldwork focused on using dendrochronology to document the great age of the trees. Simple age determination of the Black River bald cypress is complicated by the frequency of heart rot, but many ancient individuals are not hollow and can be sampled to determine their minimum age with tree-ring and radiocarbon dating. If the true antiquity of bald cypress can be documented then the very presence of exceptionally old living trees could help promote public and private conservation efforts in the Black River watershed.

To determine the age of individual old trees and to develop a long and well-replicated tree-ring chronology for climate reconstruction, the core sampling of bald cypress at Black River was selective. To document the oldest trees, solid individuals exhibiting the external characteristics of great age were deliberately sampled. These candidate old trees typically include large twisted and low taper stems with flat-topped crowns, a few heavy limbs, canopy die back, burls, and hollow voids (Figure 2). The trees were cored above the basal swell, typically at 3 m, to avoid distortion of the annual rings and to provide a date for the minimum age of the individual. The core specimens were mounted, polished, and all rings were dated to the calendar year of formation under the microscope at 10-70 magnifications using the skeleton plot and visual methods of crossdating (Douglass 1941, Black *et al.*, 2016). The dated rings were measured with a precision of 0.001mm and the time series for each core were submitted to correlation analyses of overlapping segments for quality control of dating and

1
2
3 96 measurement (Holmes 1983). The well-dated ring width time series were then
4
5 97 detrended and standardized to remove non-climatic growth trend by fitting a
6
7 98 spline function to the measurements from each core (the spline functions had a
8
9
10 99 50% frequency response equal to 67% of the series length). The raw
11
12 100 measurements were first power transformed to reduce bias (Cook and Peters
13
14 101 1997) and the ring-width indices were calculated as the ratio of the measurement
15
16 102 value by the value of the fitted spline each year. The mean ring width index
17
18 103 chronology for the Black River site was then computed as the biweight robust
19
20 104 mean of all individually detrended and standardized core series (Fritts 1976,
21
22 105 Hoaglin et al. 2000, Cook and Krusic 2005).

23
24
25 106 Correlation analysis was used to document the regional precipitation
26
27 107 signal in the mean index chronology from Black River. The chronology was
28
29 108 correlated with gridded monthly precipitation totals in the PRISM 4 km resolution
30
31 109 monthly precipitation dataset for the eastern United States available from 1895-
32
33 110 present (PRISM Group, 2004). The highest correlations were noted during the
34
35 111 first half of the growing season so the monthly PRISM values were summed to
36
37 112 April-June (AMJ) seasonal totals and the Black River chronology was then
38
39 113 correlated with these gridded seasonal values to estimate the strength and
40
41 114 spatial scale of the moisture signal in these wetland trees. To measure the
42
43 115 fidelity of the local to regional precipitation signal in the tree-ring chronology, the
44
45 116 PRISM instrumental AMJ precipitation totals from the grid point closest to the
46
47 117 Black River collection site were also correlated with the gridded PRISM AMJ
48
49 118 precipitation field for the eastern United States. These correlations all extend
50
51
52
53
54
55
56
57
58
59
60

from 1895-2010, ending in 2010 when the well replicated portion of the Black River chronology also ends. The tree-ring chronology and the nearest instrumental precipitation grid point data were then correlated with the 500 mb geopotential height field from 1948-2010 using NCEP NCAR Reanalysis (Kalnay et al. 1998) to document the large-scale atmospheric circulation features important for precipitation and tree growth in southeastern North Carolina.

Radiocarbon dating was used to independently test the age of the two oldest individual trees yet located at Black River. Calibrated AMS radiocarbon dates were obtained for cellulose extracted from small core fragments near the center of the two oldest trees [based on the High Probability Density Range Method (Bronk Ramsey 2009) and INTCAL 13 (Reimer *et al.*, 2013) at Beta Analytic, Inc.]. Because the core fragments are only 5 and 12mm in diameter, they include multiple annual rings in order to provide sufficient cellulose for radiocarbon analysis. The exact annual tree-ring dating range of each radiocarbon specimen was recorded for precise comparison with the AMS ^{14}C results.

Results

The oldest trees located thus far at Black River are found in a 300 ha section known locally as the Three Sisters Cove, but centuries to millennium old individuals are still present along nearly the entire length of the stream. Dendrochronological analysis of selected tree cores has identified several trees over 1,000-years old and two over 2,000-years old (Figure 3a). The innermost

1
2
3
4
5
6
7
8
9
10
11
12
13
14
15
16
17
18
19
20
21
22
23
24
25
26
27
28
29
30
31
32
33
34
35
36
37
38
39
40
41
42
43
44
45
46
47
48
49
50
51
52
53
54
55
56
57
58
59
60

dated ring on tree BLK232 is 70 BCE and for BLK227 it is 605 BCE, making them at least 2,088- and 2,624-years old in 2018, respectively. Both tree-ring dates represent the minimum age of each tree because they were cored above the basal swell at 3 m above the swamp floor. No specific information is available on the time required for saplings to reach a height of 3 m, but growth rates are very slow at Black River.

The tree-ring dating for both of these very old trees has been independently confirmed with radiocarbon dating, within the dating precision of the AMS ¹⁴C estimates. The inner core fragment for BLK227 was tree-ring dated from 548-600 BCE and is within the 95% CI of the AMS ¹⁴C result for this tree (i.e., AMS ¹⁴C = 788-537 BCE; Laboratory Number Beta-497625). The inner core fragment for BLK232 was tree-ring dated from 34-43 BCE, also within the 95% CI for the AMS ¹⁴C result for this ancient tree (i.e., 118 BCE to 26 CE; Laboratory No. Beta-497626).

Heart rot is prevalent in the largest and oldest trees at Black River (e.g., Figure 2a) but there is evidence suggesting that several other bald cypress trees are over 2,000-years old along this stream. We extracted core samples from four trees with innermost rings that tree-ring dated to at least 200, 235, 395, and 427 CE (Figure 3a), but these cores did not approach the true center ring due to heart rot or other irregularities. Given the very slow growth rates of these particular trees and all other sampled cypress at Black River, which is only 4.3 cm of radial expansion per century, it is likely that these four trees are also over 2,000-years old [i.e., mean annual ring width = 0.43 mm (std dev = 0.31); n = 179 radii from

110 trees). Because we have cored and dated only 110 living bald cypress at this site, a small fraction of the tens of thousands of trees still present in these wetlands, there could be several additional individual bald cypress over 2,000-years old along the approximately 100 km reach of Black River.

The ancient bald cypress trees at Black River record a unique and otherwise unavailable record of annually resolved climate variability and change in the exactly dated annual growth rings. The long tree-ring chronology derived from the ancient bald cypress exhibits dramatic interannual, decadal, and multidecadal variability (Figure 3b) and is positively correlated with growing season rainfall totals over the southeastern United States (Figure 4a), in spite of the frequently flooded conditions that prevail in these forested wetlands. This strong positive precipitation response at Black River, which has been detected in all other available bald cypress chronologies (Stahle and Cleaveland 1992, Stahle *et al.*, 2012), reflects large inter-annual variability in water levels, intense evapotranspiration demand during the growing season, root system stratification near the wetland soil surface by frequent anoxic conditions at depth, and the flux of well-oxygenated water through the root zone (e.g., Davidson *et al.*, 2006, Stahle *et al.*, 2012). Dendroclimatic reconstructions of rainfall based on Black River and other bald cypress chronologies from the region have revealed decade-long droughts and pluvials during colonial and pre-colonial times that exceed any measured during the modern period (Stahle *et al.*, 1988), including the severe droughts that impacted the first English attempts to settle in America at the Roanoke Island and Jamestown colonies (Stahle *et al.*, 1998).

1
2
3
4
5
6
7
8
9
10
11
12
13
14
15
16
17
18
19
20
21
22
23
24
25
26
27
28
29
30
31
32
33
34
35
36
37
38
39
40
41
42
43
44
45
46
47
48
49
50
51
52
53
54
55
56
57
58
59
60

188 The regional precipitation signal encoded in the Black River chronology
189 (Figure 4a) closely follows the region-wide pattern of correlation for the
190 instrumental precipitation data from southeastern North Carolina (Figure 4b).
191 The correlations between the chronology and gridded precipitation totals are not
192 as strong as the correlation between the gridded instrumental data at adjacent
193 grid points, of course, but the tree-ring chronology can explain approximately half
194 of the variance in nearby instrumental AMJ precipitation totals and has the virtue
195 of spanning the past two millennia. The Black River tree-ring chronology is also
196 correlated with the 500 mb geopotential height field over the Northern
197 Hemisphere during the spring-early summer (Figure 4c). The spatial pattern of
198 correlation is similar for the co-located PRISM instrumental AMJ precipitation
199 totals and the correlation maps (Figure 4cd) indicate that tree growth and AMJ
200 precipitation both tend to be reduced during the positive phase of the
201 Pacific/North American (PNA) pattern of mid-tropospheric circulation as has been
202 previously described for the eastern United States (Leathers *et al.*, 1991). The
203 geopotential height correlations are higher in the Pacific and Atlantic sectors for
204 the tree-ring chronology, but they are higher for the instrumental precipitation
205 totals over the eastern United States (Figure 4cd). These differences may arise
206 from the fact that bald cypress growth is also negatively correlated with
207 temperature (Stahle *et al.*, 1988), which is also well correlated with the PNA
208 during the winter-spring.

209

210 **Discussion and Conclusions**

Living trees over 2,000-years old are extremely rare worldwide. Only eight species have been proven with dendrochronology to live for more than 2,000 years (Brown 1996). Six of these species are located in the western United States, one in Chile, and now bald cypress at Black River, North Carolina. The oldest known Black River bald cypress (BLK227) has an inner ring date of 605 BCE, based on crossdating with other trees at Black River back to as early as 70 BCE, but with four radii from just this one old tree from 70 to 605 BCE. This means that BLK227 is at least 2,624-years old in 2018, moving bald cypress to number five on the worldwide list of the oldest-known continuously living, sexually reproducing, non-clonal tree species based on dendrochronology. Bald cypress is the oldest-known wetland tree species on earth. Only individual trees of Sierra juniper (*Juniperus occidentalis*) at 2,675-years, giant sequoia (*Sequoiadendron giganteum*) at 3,266, alerce (*Fitzroya cupressoides*) at 3,622, and Great Basin bristlecone pine (*Pinus longaeva*) at 5,066-years old are known to live longer than Black River bald cypress. The actual difference in the age of the oldest-known bald cypress and Sierra juniper is likely very low because of the extremely slow growth rates at Black River and the time required for trees to reach the 3 m sampling height.

The maximum longevity of wetland tree species has not been well documented. The oldest-known are the millennia-old bald cypress at Black River, but Montezuma bald cypress (*T. mucronatum*) in the 1,200 to 1,500-year age class have been reported in Mexico (Villanueva-Diaz et al 2007) and *Pilgerodendron uviferum* at least 859-years old have been noted in southern

1
2
3
4
5
6
7
8
9
10
11
12
13
14
15
16
17
18
19
20
21
22
23
24
25
26
27
28
29
30
31
32
33
34
35
36
37
38
39
40
41
42
43
44
45
46
47
48
49
50
51
52
53
54
55
56
57
58
59
60

234 Chile (Aravena 2007; *P. uviferum* is found in both upland and bog sites in
235 Valdivian temperate rainforests). The oldest-reported angiosperm species from a
236 wetland settling appears to be a *Nyssa silvatica* at 679-year old from a bog in
237 New England (Di Filippo et al 2015), and a *Nyssa aquatica* at least 600-years in
238 the forested wetlands of Bayou DeView, Arkansas (Stahle, unpublished data).
239 *Macrolobium accacifolium* over 500-years old have been reported from the
240 seasonally flooded forests of the central Amazon based on tree-ring analysis
241 (Schöngart et al 2005).

242 Certain nutrient-poor wetlands may be consistent with a model of
243 “longevity under adversity” which Schulman (1954) applied to conifers in semi-
244 arid America, including bristlecone pine (*Pinus longeava*), the oldest known living
245 trees on earth (Schulman 1958). The adverse low pH, limited nutrients, and
246 frequently flooded conditions at Black River not only exclude most bottomland
247 hardwood tree species, they are also associated with extremely slow growth
248 rates of bald cypress on this black water stream. The differences on tree growth
249 rates between the seasonally flooded forests of the várzea and igapó in the
250 central Amazon have also been attributed to nutrient availability in these white-
251 water and black-water forested wetlands, respectively (Schöngart et al 2005).

252 The long tree-ring chronology developed from these ancient bald cypress
253 trees has considerable paleoclimate value. The strong regional scale moisture
254 signal in this chronology has contributed to the success of tree-ring
255 reconstructions of the Palmer drought severity index (PDSI) on a gridded basis
256 for North America (Cook *et al.*, 1999, 2007). These PDSI reconstructions in the

so-called North American Drought Atlas (NADA) have leveraged the analysis of past droughts and pluvials (Fye et al., 2003, Cook et al. 2016), the large-scale climate dynamics responsible for moisture variability over the continent (Coats et al. 2016, Baek et al., 2017), and interactions between climate, ecosystem function (Swetnam et al., 2009, Marlon et al., 2017), and social impacts over the past two millennia (Stahle and Dean 2011, Burns et al., 2014). The recently discovered old trees have extended the existing Black River chronology by 970-years (i.e., from 365 CE to 605 BCE), but the chronology is based on only one tree before 70 BCE. Tree-ring samples are available from only 110 trees out of the tens of thousands still present along this stream and it is likely that the chronology can be improved and perhaps extended with additional sampling of old trees. Old relic logs are sparingly present in shallow submerged context and likely in the thalweg of the main channel on the lower reaches of the Black River. These sources of relic or sub-fossil logs have not been investigated but may help improve and extend the Black River chronology deeper into the Holocene.

The ancient bald cypress forests of Black River survive in the heavily developed agricultural and industrial forest landscape of southeastern North Carolina. Few if any old growth upland hardwood or pine forests of any size are known to still exist in the vicinity of Black River. Exploitation of timber and naval stores began during the colonial era and the Black River was accessible by steamboat from the Cape Fear River during the 19th century (Hart 1994). Many bald cypress and bottomland hardwoods were cut along the Black River, of course, but the old-growth trees that dominate many stands were simply not

1
2
3
4
5
6
7
8
9
10
11
12
13
14
15
16
17
18
19
20
21
22
23
24
25
26
27
28
29
30
31
32
33
34
35
36
37
38
39
40
41
42
43
44
45
46
47
48
49
50
51
52
53
54
55
56
57
58
59
60

280 suited for saw log production (Stahle *et al.*, 2012). As a result, extensive tracts of
281 uncut ancient forest remain intact along the Black River.

282 The survival of ancient bald cypress and other tree species at Black River
283 provides qualitative and quantitative evidence for the ecological integrity of this
284 wetland ecosystem. Qualitatively, an excursion on the Black River where clear
285 tea-colored water flows over white sand and among columnar trees of great age
286 is a unique experience and certainly qualifies this stream as one of the great
287 natural areas of eastern North America (Figures 1 and 2). Quantitatively, the
288 minimum age determinations of selected old-growth bald cypress trees are
289 based on dendrochronology (Figure 3a), the most accurate and precise dating
290 method in geochronology. The habitat value of the Black River is further
291 documented by the high surface water quality (a designated Outstanding
292 Resource Water, NCDPR 2018), the presence of rare and endangered species
293 (NCDPR 2018), and the recent observations of threatened wood storks (*Mycteria*
294 *americana*) and swallowtail kites (*Elanoides forficatus*) in these forested
295 wetlands.

296 The Nature Conservancy has led the preservation of the Black River, but
297 the state of North Carolina and a few other private landowners have made
298 important conservation contributions as well. A feasibility study to consider the
299 establishment of a state park on the Black River was enacted by the North
300 Carolina General Assembly in 2017 (HB353 in NCDPR 2018) and the Nature
301 Conservancy continues to seek funding to expand their Black River Preserve.
302 Unfortunately, the ancient forests and water quality of the Black River are both

1
2
3 303 imperiled by continued logging, biomass harvesting for wood pellets and garden
4
5 304 mulch, and water pollution from confined animal feeding operations and
6
7 305 municipal discharge in the watershed. In the longer term, the Three Sisters Cove
8
9 306 is only 2 m above mean sea level and is at risk from sea level rise which could
10
11 307 occur during the life span of these exceptionally old trees with unmitigated
12
13 308 anthropogenic global warming. To counter these threats, the discovery of the
14
15 309 oldest known living trees in eastern North America, which are in fact some of the
16
17 310 oldest living trees on earth, provides powerful incentive for private, state, and
18
19 311 federal conservation of this remarkable waterway.
20
21
22
23
24
25
26 312
27
28
29
30
31
32
33
34
35
36
37
38
39
40
41
42
43
44
45
46
47
48
49
50
51
52
53
54
55
56
57
58
59
60

1
2
3
4
5
6
7
8
9
10
11
12
13
14
15
16
17
18
19
20
21
22
23
24
25
26
27
28
29
30
31
32
33
34
35
36
37
38
39
40
41
42
43
44
45
46
47
48
49
50
51
52
53
54
55
56
57
58
59
60

314

315

316

317

318

319

320

321

322

323

324

325

326

Acknowledgements

Funded in part by the National Science Foundation (AGS-1266014), The Nature Conservancy, and private donations to the Ancient Bald Cypress Consortium. We thank John and Maggie DeCuevas, Kemp Burdette, Jordan Burns, Graham Hawks, Hervey McIver, Julie Moore, Zack West, and Katherine P. Wolff. We appreciate the helpful editorial suggestions of Neil Pederson and an anonymous reviewer. The tree-ring data described in this article are available from the corresponding author (dstahle@uark.edu) and from the International Tree-Ring Data Bank, NOAA Paleoclimatology Program (<https://www.ncdc.noaa.gov/data-access/paleoclimatology-data/datasets/tree-ring>).

References Cited

Aravena, JC, 2007. Reconstructing climate variability using tree rings and glacier fluctuations in the southern Chilean Andes. PhD Dissertation, University of Western Ontario, London. 220 p.

Baek, S.H., J.E. Smerdon, S. Coats, A.P. Williams, B.I. Cook, E.R. Cook, R. Seager. 2017. Precipitation, temperature, and teleconnection signals across the combined North American, Monsoon Asia, and Old World Drought Atlases. *Journal of Climate* 30:7141-7155.

Black, B.A., D. Griffin, P. van der Sleen, *et al.* 2016. The value of crossdating to retain high-frequency variability, climate signals, and extreme events in environmental proxies. *Global Change Biology* 22:2582-2595.

Bronk Ramsey, C. 2009. Bayesian analysis of radiocarbon dates. *Radiocarbon*, 51:337-360.

Brown, P.M. 1996. OLDLIST: A database of maximum tree ages. In: J.S. Dean, D.M. Meko, and T.W. Swetnam, eds. *Tree Rings, Environment, and Humanity: Proceedings of the International Conference, Tucson, Arizona, 17-21 May, 1994*. *Radiocarbon* 1996:727-731. See also: <http://www.rmtrr.org/oldlist.htm>

1
2
3
4
5
6
7
8
9
10
11
12
13
14
15
16
17
18
19
20
21
22
23
24
25
26
27
28
29
30
31
32
33
34
35
36
37
38
39
40
41
42
43
44
45
46
47
48
49
50
51
52
53
54
55
56
57
58
59
60

349 Burns, J.N., R. Acuna-Soto, and D.W. Stahle. 2014. Drought and epidemic
350 typhus, central Mexico, 1655-1918. *Emerging Infectious Diseases* 20:442-447.
351
352 Coats, S., J.E. Smerdon, B.I. Cook, R. Seager, E.R. Cook, K.J. Anchukaitis.
353 2016. Internal ocean-atmosphere variability drives megadroughts in western
354 North America. *Geophysical Research Letters* 43:9886-9894.
355
356 Cook, B.I., E.R. Cook, J.E. Smerdon, R. Seager, A.P. Williams, S. Coats, D.W.
357 Stahle, J. Villanueva Diaz. 2016. North American megadroughts in the Common
358 Era: reconstructions and simulations. *WIRE Climate Change* doi:
359 10.1002/wcc.394.
360
361 Cook, E.R. and K. Peters. 1997. Calculating unbiased tree-ring indices for the
362 study of climatic and environmental change. *The Holocene* 7:359-368.
363
364 Cook, E.R., and P.J. Krusic. 2005 (unpublished manuscript). Program ARSTAN:
365 A Tree-Ring Standardization Program Based on Detrending and Autoregressive
366 Time Series Modeling, with Interactive Graphics. Manuscript on file, Tree-Ring
367 Lab, Lamont Doherty Earth Observatory of Columbia University, Palisades, NY.
368
369 Davidson, G.R., B.C. Laine, S.J. Galicki, *et al.* 2006. Root zone hydrology: why
370 bald cypress in flooded wetlands grow more when it rains. *Tree-Ring Research*
371 62:3-12.

372

373 Douglass, A.E. 1941. Crossdating in dendrochronology. *Journal of Forestry*

374 39:825-831.

375

376 Di Filippo, A, N Pederson, M Baliva, M Brunetti, A Dinella, K Kitamura, HD

377 Knapp, B Schirone, G Piovesan (2015) The longevity of broadleaf deciduous

378 trees in Northern Hemisphere temperate forests: insights from tree-ring series.

379 *Frontiers in Ecology and Evolution* 3(46):1-15.

380

381 Fritts, H.C. 1976. *Tree Rings and Climate*. Academic Press, London.

382

383 Fye, F.K., D.W. Stahle, and E.R. Cook. 2003. Paleoclimatic analogs to 20th

384 century moisture regimes across the USA. *Bulletin of the American*

385 *Meteorological Society* 84:901-909.

386

387 Hart, K. 1994. The legend of Black Beauty. *Coastwatch* March/April 1994:10-15

388 (ISSN 1068-784X).

389

390 Hoaglin, D.C., F. Mosteller, and J.W. Tukey. 2000. *Understanding Robust and*

391 *Exploratory Data Analysis*. Wiley, 472 pp.

392

393 Holmes, R.L. 1983. Computer-assisted quality control in tree-ring dating and

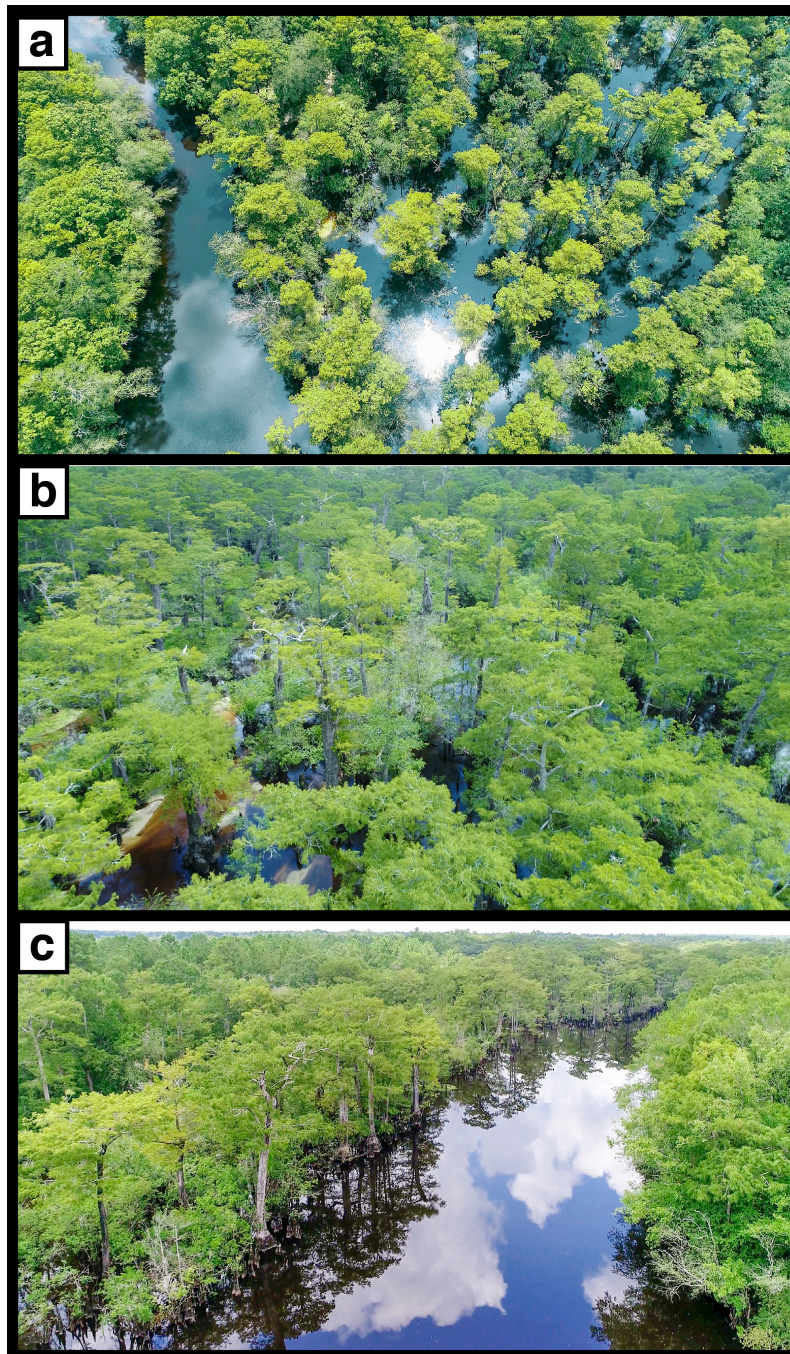
394 measurement. *Tree-Ring Bulletin* 44:69-78.

1
2
3 395
4
5 396 Kalnay, E., and coauthors. 1996. The NCEP/NCAR 40-Year Reanalysis Project.
6
7 397 *Bulletin of the American Meteorological Society* 77:437–471.
8
9 398
10
11 399 Leathers, D.J., B. Yarnal, and M.A. Palecki. 1991. The Pacific/North American
12
13 400 teleconnection pattern and United States climate. Part I: regional temperature
14
15 401 and precipitation associations. *Journal of Climate* 4:517-528.
16
17 402
18
19 403 Marlon, J.R., N. Pederson, C. Nolan, et al. 2017. Climatic history of the
20
21 404 northeastern United States during the past 3000 years. *Climate of the Past*
22
23 405 13:1355-1379.
24
25 406
26
27 407 NCDPR (North Carolina Division of Parks and Recreation). 2018 (unpublished
28
29 408 manuscript). Feasibility study of establishing a state park along the Black River
30
31 409 in Sampson, Bladen, and Pender Counties. Raleigh, NC, 20 pp.
32
33 410
34
35 411 PRISM Climate Group. 2004. Oregon State University,
36
37 412 <http://prism.oregonstate.edu>, created 4 Feb 2004.
38
39 413
40
41 414 Reimer, P.J., E. Bard, A. Bayless, *et al.* 2013. INTCAL 13 and MARINE13
42
43 415 radiocarbon age calibration curves 0-50,000 years cal BP. *Radiocarbon*.
44
45 416 55:1869-1887.
46
47 417
48
49
50
51
52
53
54
55
56
57
58
59
60

- 418 Schöngart, J, MTF Piedade, F Wittmann, WJ Junk, M Worbes (2005) Wood
419 growth patterns of *Macrolobium acaciifolium* (Benth.) Benth. (Fabaceae) in
420 Amazonian black-water and white-water floodplain forests. *Oecologia* DOI
421 10.1007/s00442-005-0147-8.
422
423 Schulman, E (1954) Longevity under adversity. *Science* 119:396-399.
424
425 Schulman E (1958) Bristlecone pine, oldest known living thing. *National*
426 *Geographic Magazine* 1958, 355-372.
427
428 Stahle, D.W., M.K. Cleaveland, and J.G. Hehr. 1988. North Carolina climate
429 changes reconstructed from tree rings: A.D. 372 to 1985. *Science* 240:1517-
430 1519.
431
432 Stahle, D.W., and M.K. Cleaveland. 1992. Reconstruction and analysis of spring
433 rainfall over the Southeastern U.S. for the past 1000 years. *Bulletin of the*
434 *American Meteorological Society* 73:1947-1961.
435
436 Stahle, D.W., and J.S. Dean. 2011. North American tree rings, climatic extremes,
437 and social disasters. Pages 297-327 in MK Hughes, TW Swetnam, HF Diaz, eds.
438 *Dendroclimatology: Progress and Prospects*, Developments in
439 *Paleoenvironmental Research*, Vol. 11, Springer.
440

1
2
3 441 Stahle, D.W., M.K. Cleaveland, D.B. Blanton, *et al.* 1998. The Lost Colony and
4
5 442 Jamestown Droughts. *Science* 280:564-567.
6
7 443
8
9
10 444 Stahle, D.W., D.J. Burnette, J. Villanueva Diaz, *et al.* 2012. Tree-ring analysis of
11
12 445 ancient baldcypress trees and subfossil wood. *Quaternary Science Reviews*
13
14 446 34:1-15.
15
16
17 447
18
19 448 Swetnam, T.S., C.H. Baisan, A.C. Caprio, P.M. Brown, R. Touchan, S.R.
20
21 449 Anderson, and D.J. Hallett. 2009. Multi-millennial fire history of the Giant Forest,
22
23 450 Sequoia National Park, California, USA. *Fire Ecology* 5:120-150.
24
25
26 451
27
28 452 Villanueva-Diaz J, DW Stahle, BH Luckman, J Cerano-Paredes, MD Therrell R
29
30 453 Moran-Martinez, MK Cleaveland (2007) Potencial dendroronologico de
31
32 454 Taxodium mucronatum Ten. y acciones para su conservacion en Mexico.
33
34
35 455 *Ciencia Forestal en Mexico* 32 (101):9-38.
36
37
38 456
39
40
41
42
43
44
45
46
47
48
49
50
51
52
53
54
55
56
57
58
59
60

457



458

459

460 **Figure 1.** The ancient forested wetlands of Black River preserve the oldest living
461 trees in eastern North America and represent a unique natural heritage deserving
462 of permanent protection [aerial photographs from approximately 80, 60, and 40 m
463 (a, b, c, respectively)].

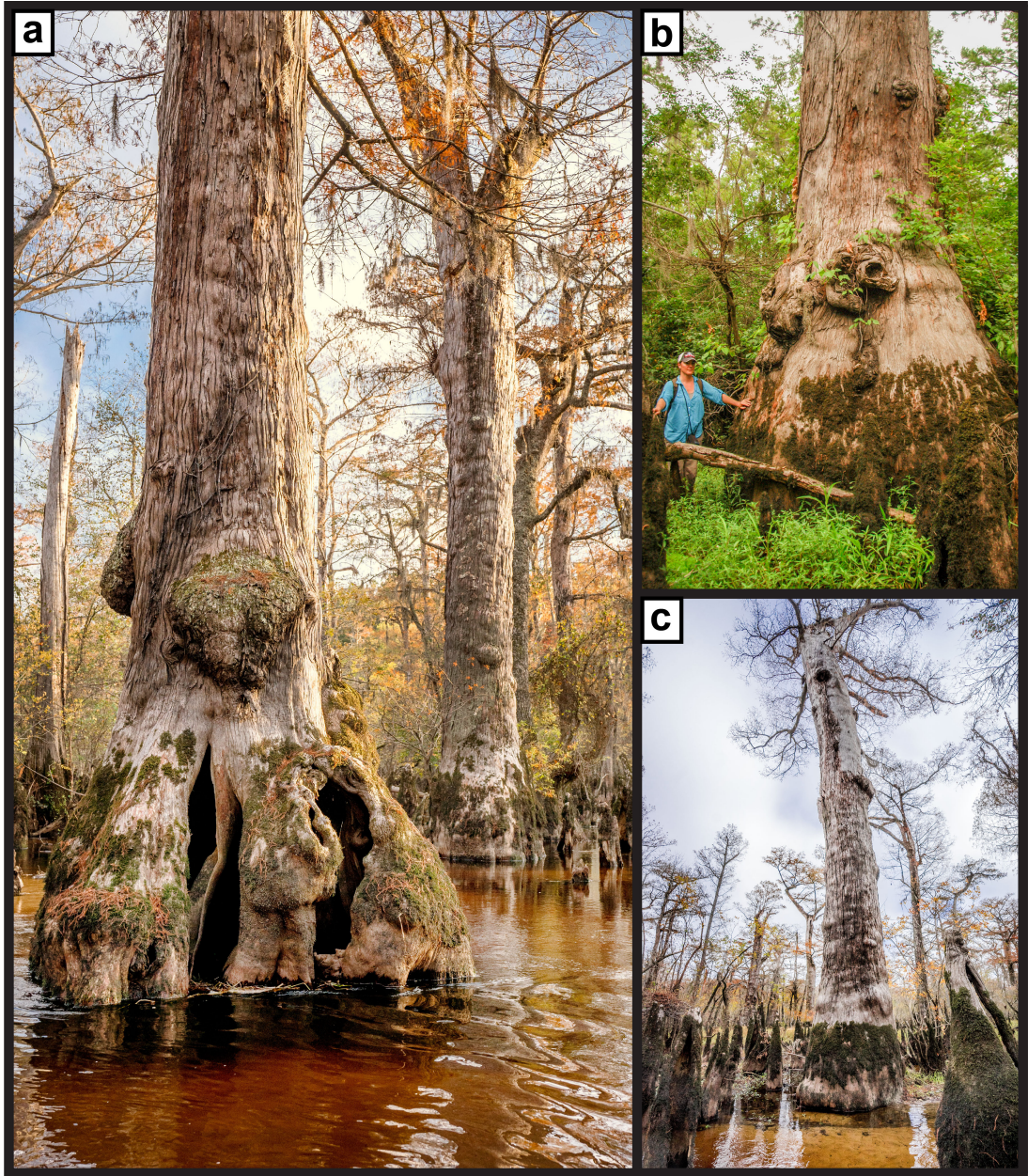


Figure 2. The deciduous *Taxodium distichum* illustrated here are 1,000 to over 2,000 year old (autumn a,c; summer b), exhibit the external features of senescent trees, help document the ecological integrity of the Black River system, and provide a high-quality proxy precipitation record for over two millennia.

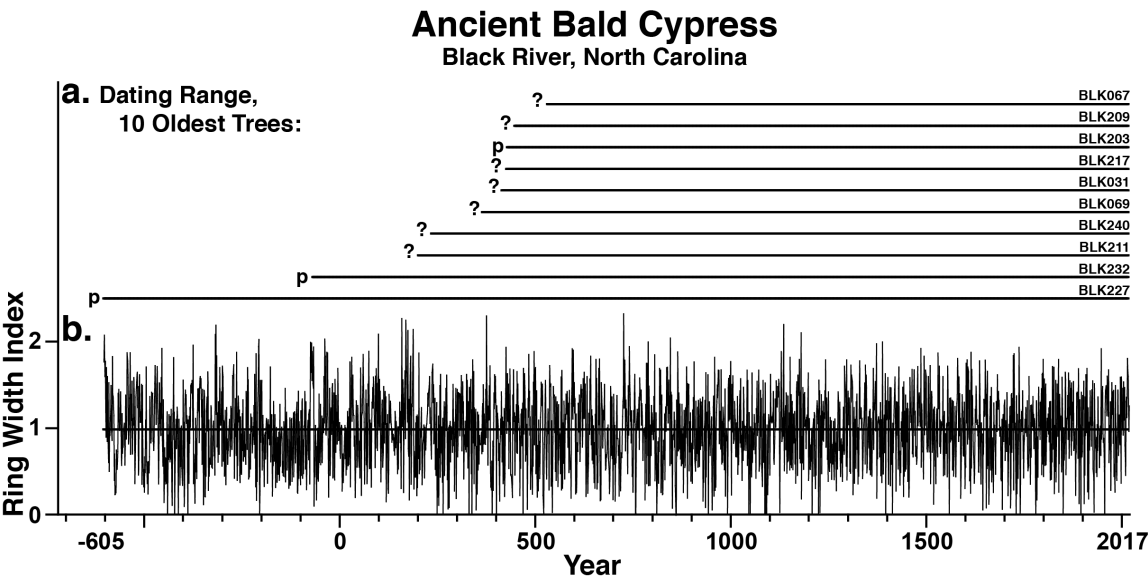


Figure 3. (a) The minimum age range of the 10 oldest trees presently known along the Black River is illustrated (p = pith at core height; ? = centermost ring not to pith, true age not known), along with (b) the precipitation sensitive mean ring-width chronology dating from 605 BCE to 2017 CE based on all 179 dendrochronologically dated radii from 110 trees.

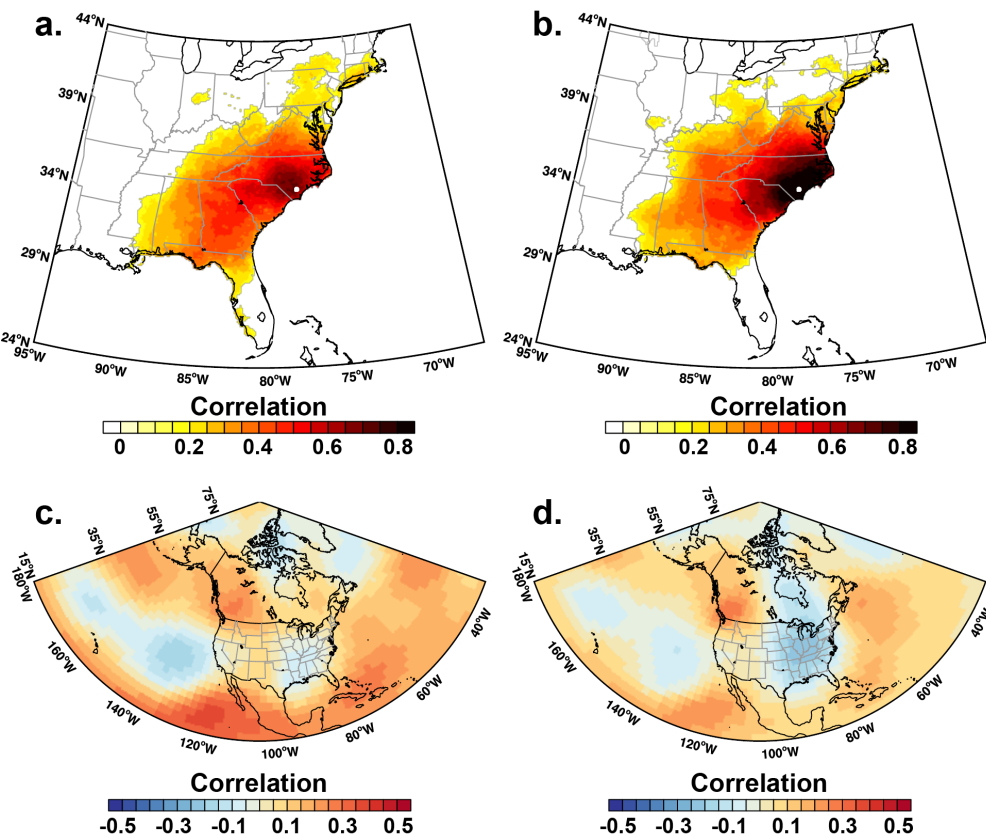


Figure 4. (a) The ring-width chronology of bald cypress from Black River (white symbol) was correlated with gridded instrumental April-June precipitation totals from the PRISM dataset for 1895-2010. The highest correlation at any single grid point over this 116-year interval was $r = 0.72$ ($p < 0.0001$). (b) Same as (a), but the instrumental precipitation grid point closest to the Black River collection site was correlated with all other instrumental grid point values for April-June precipitation (highest single grid point correlation for 116-year period was $r = 0.999$). (c) The ring-width chronology was correlated with 500 mb geopotential heights for 1948-2010. (d) The nearest grid point instrumental AMJ precipitation totals were also correlated with the 500 mb heights for 1948-2010. Note the fidelity of the precipitation and circulation signals recorded by the Black River tree-ring data (a,c) when compared with instrumental precipitation (b,d).