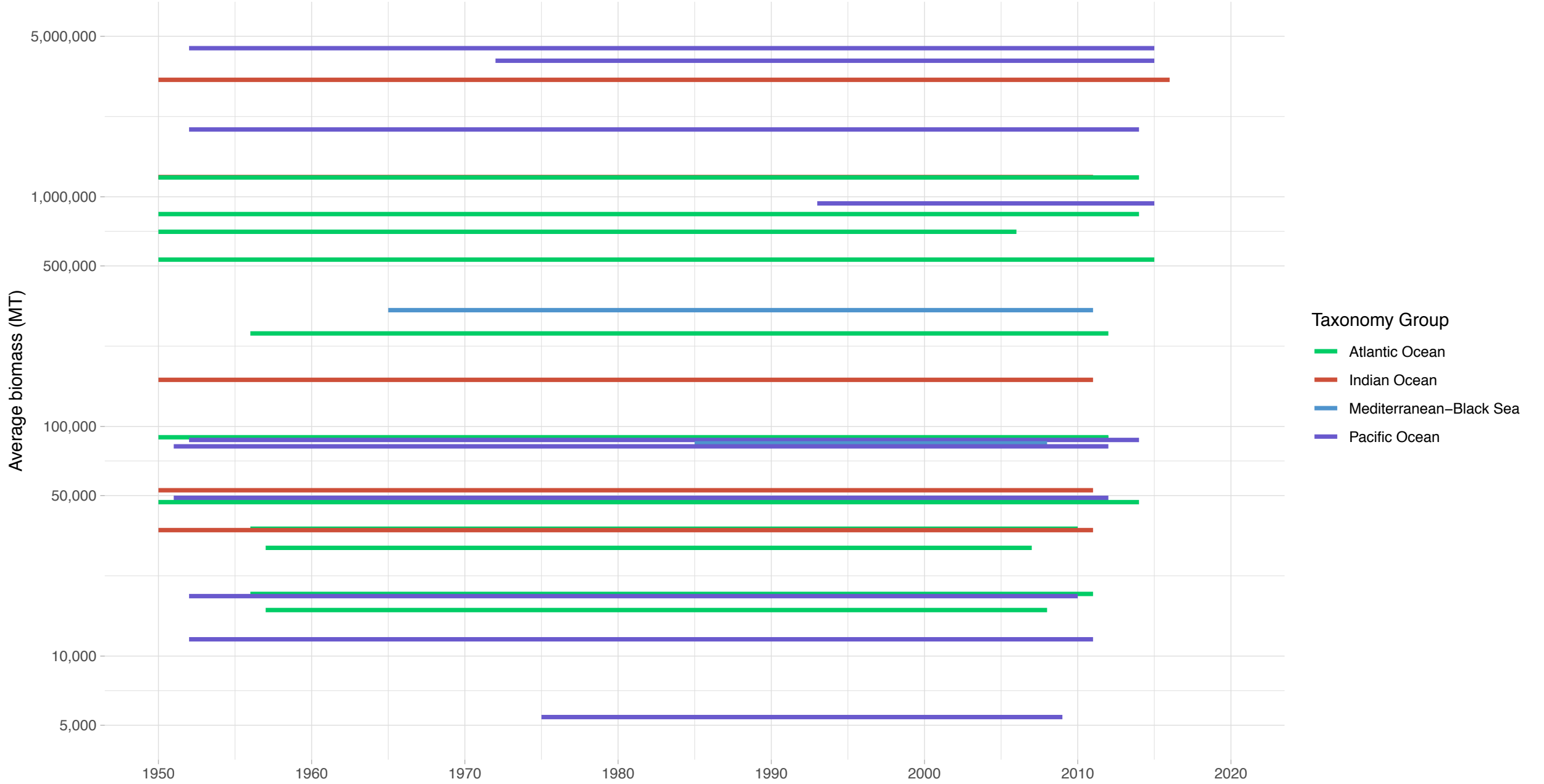
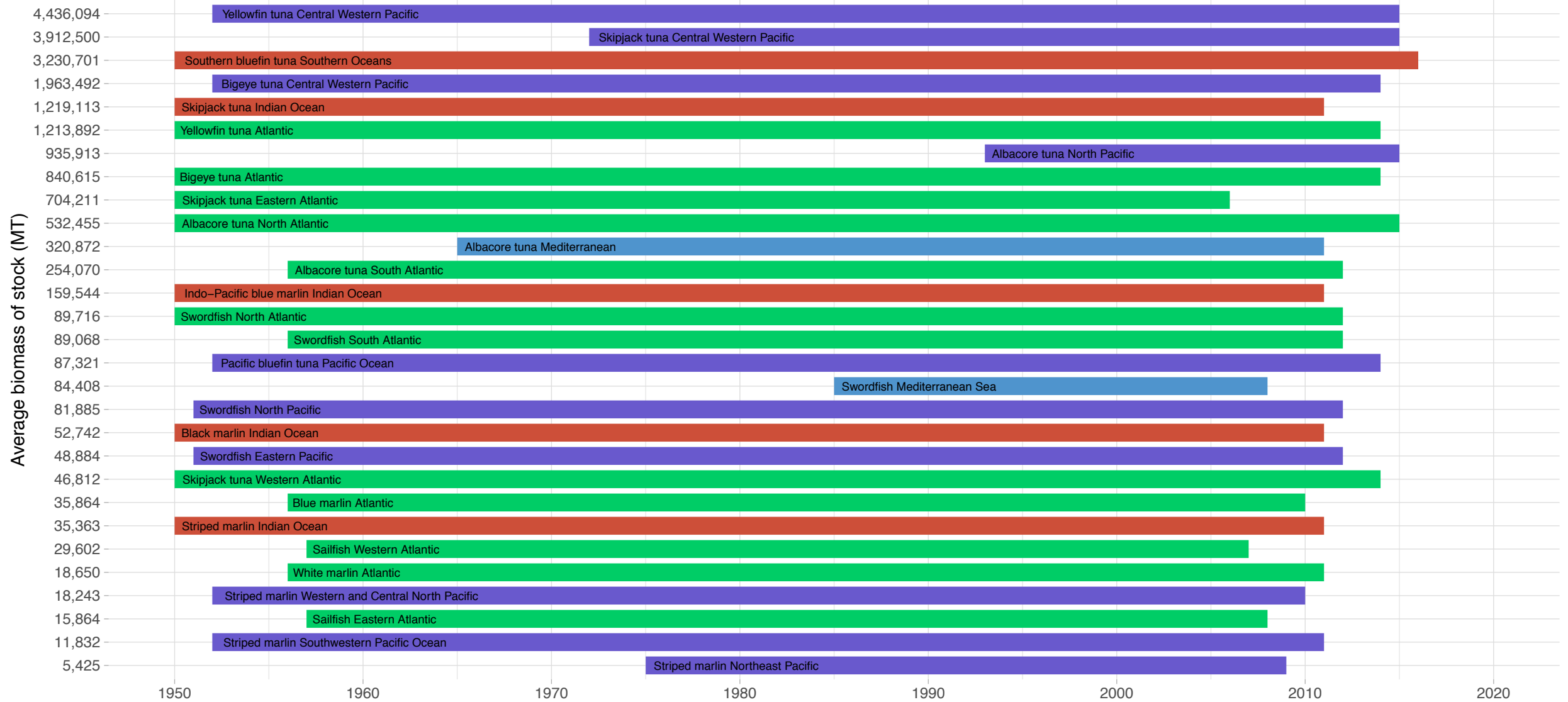


# Biomass Coverage in Tuna–Billfish Taxonomy Group




# Biomass Coverage Over Time in Tuna–Billfish Taxonomy Group


Stocks ordered from lowest to highest average biomass

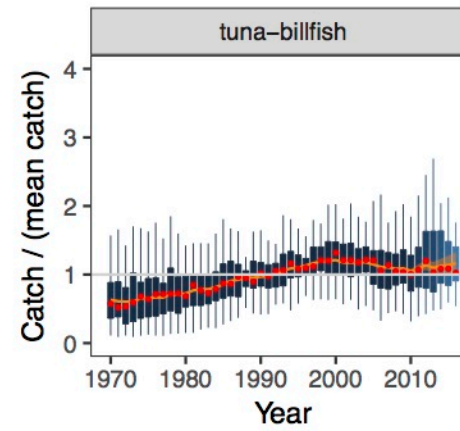
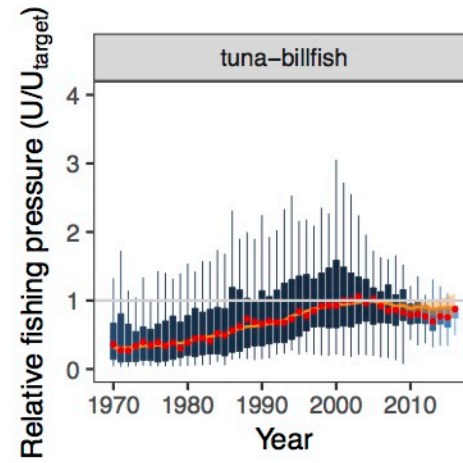
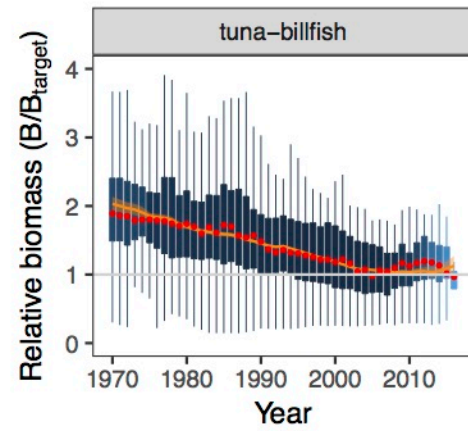


Taxonomy Group ■ Atlantic Ocean ■ Indian Ocean ■ Mediterranean-Black Sea ■ Pacific Ocean



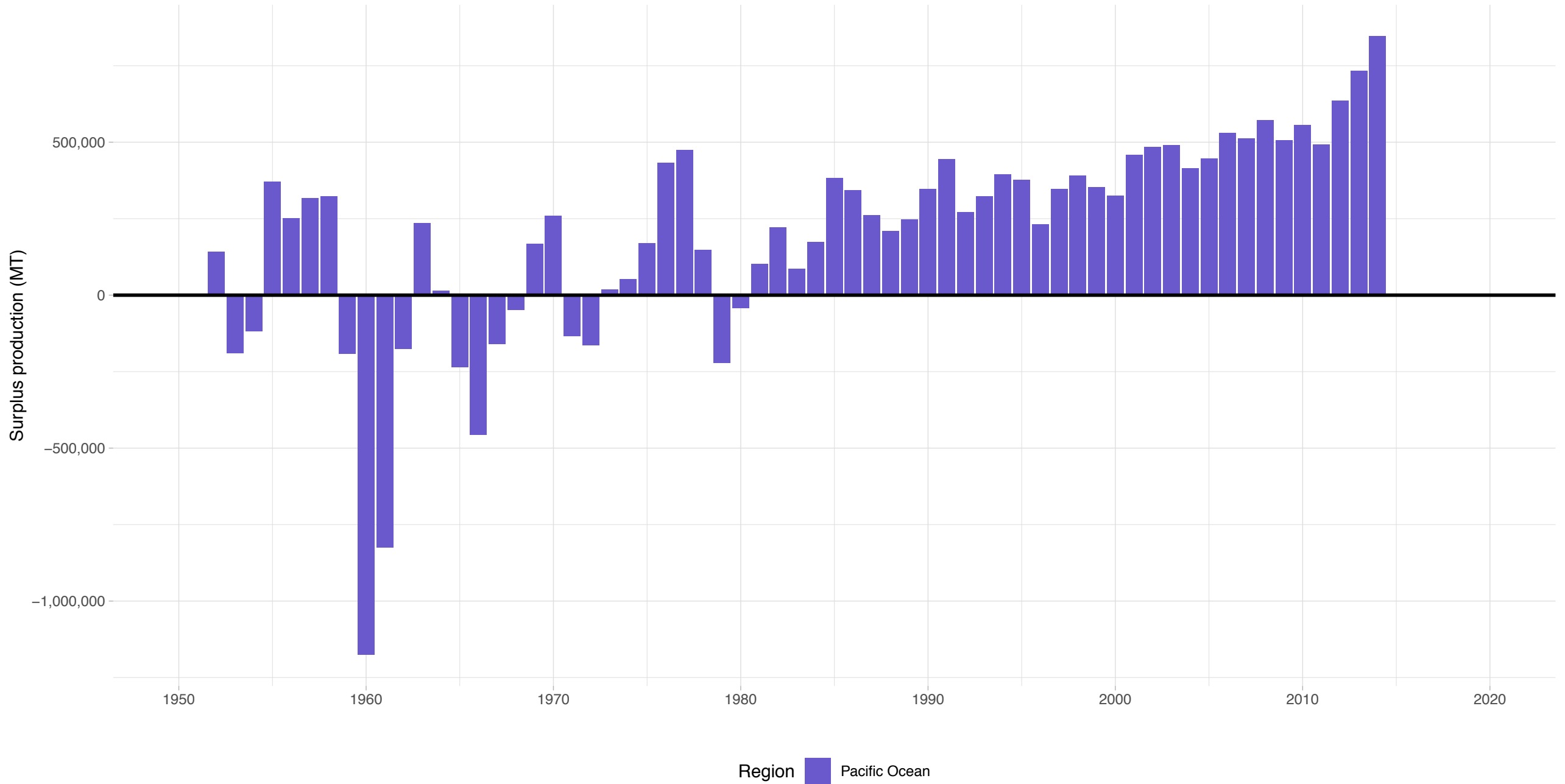
Summary method:  Median

 State-space model prediction



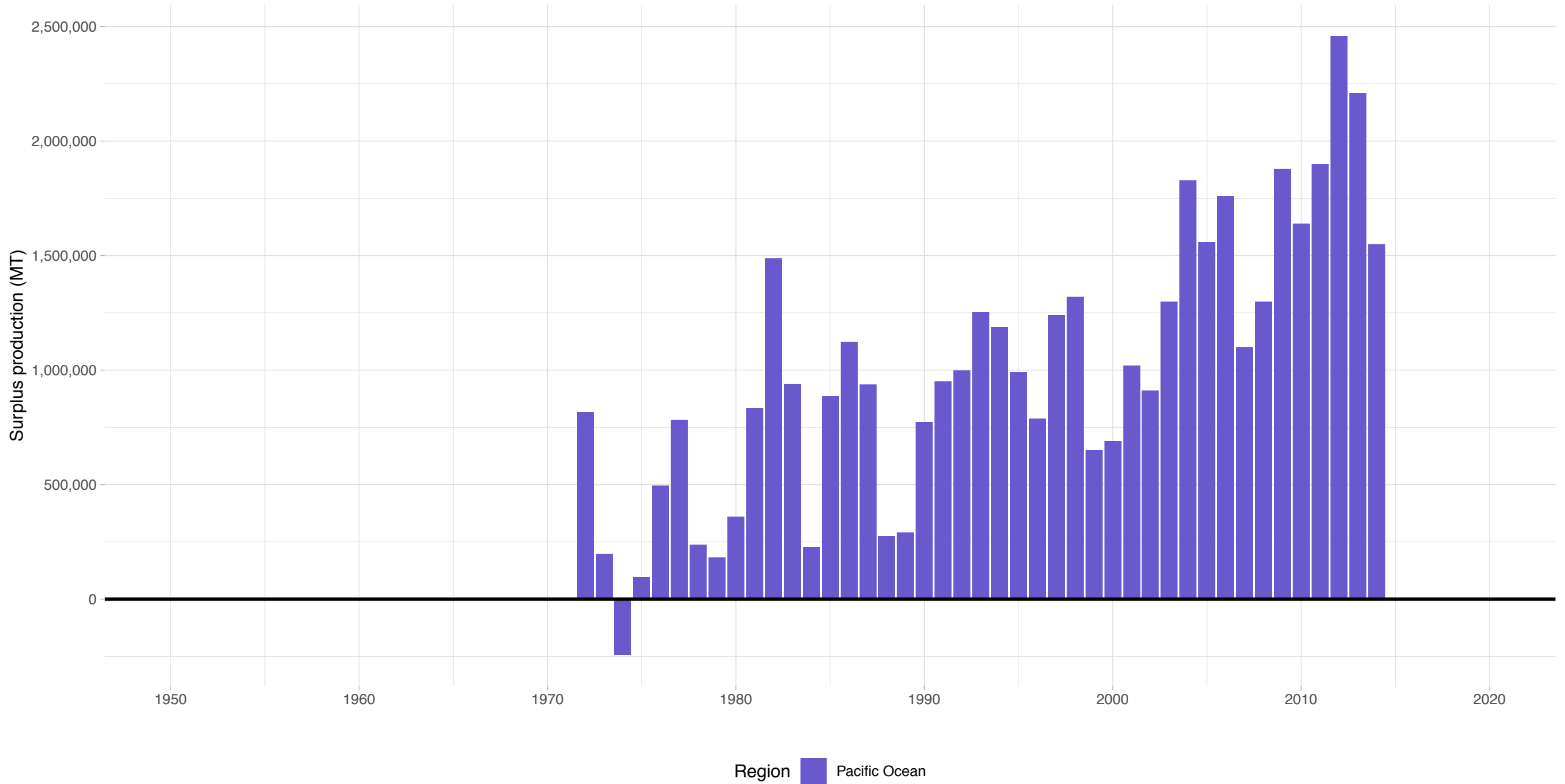
# Yellowfin tuna Central Western Pacific – Tuna–Billfish Taxonomy Group

Stock represents 15.5% of average absolute surplus production



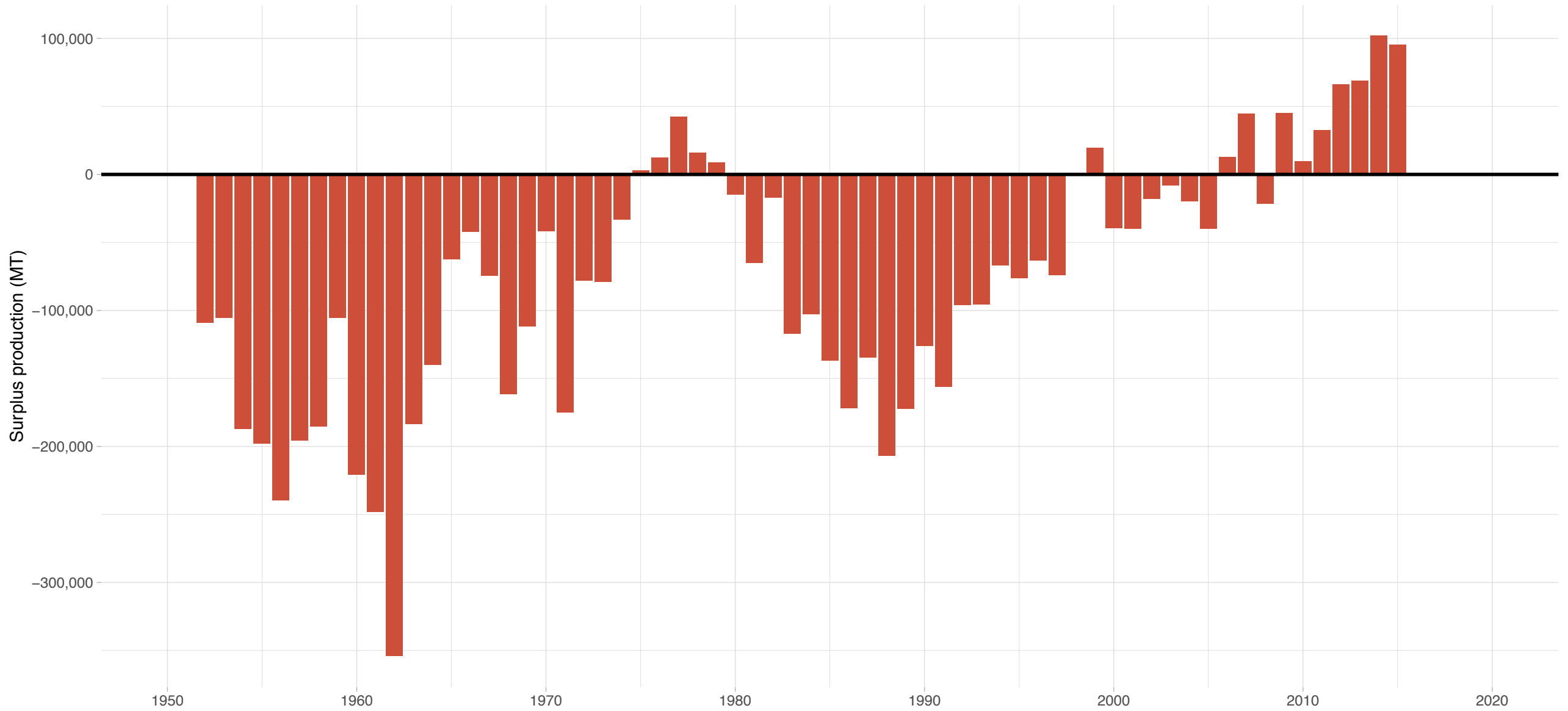
# Skipjack tuna Central Western Pacific – Tuna–Billfish Taxonomy Group

Stock represents 47.2% of average absolute surplus production



# Southern bluefin tuna Southern Oceans – Tuna–Billfish Taxonomy Group

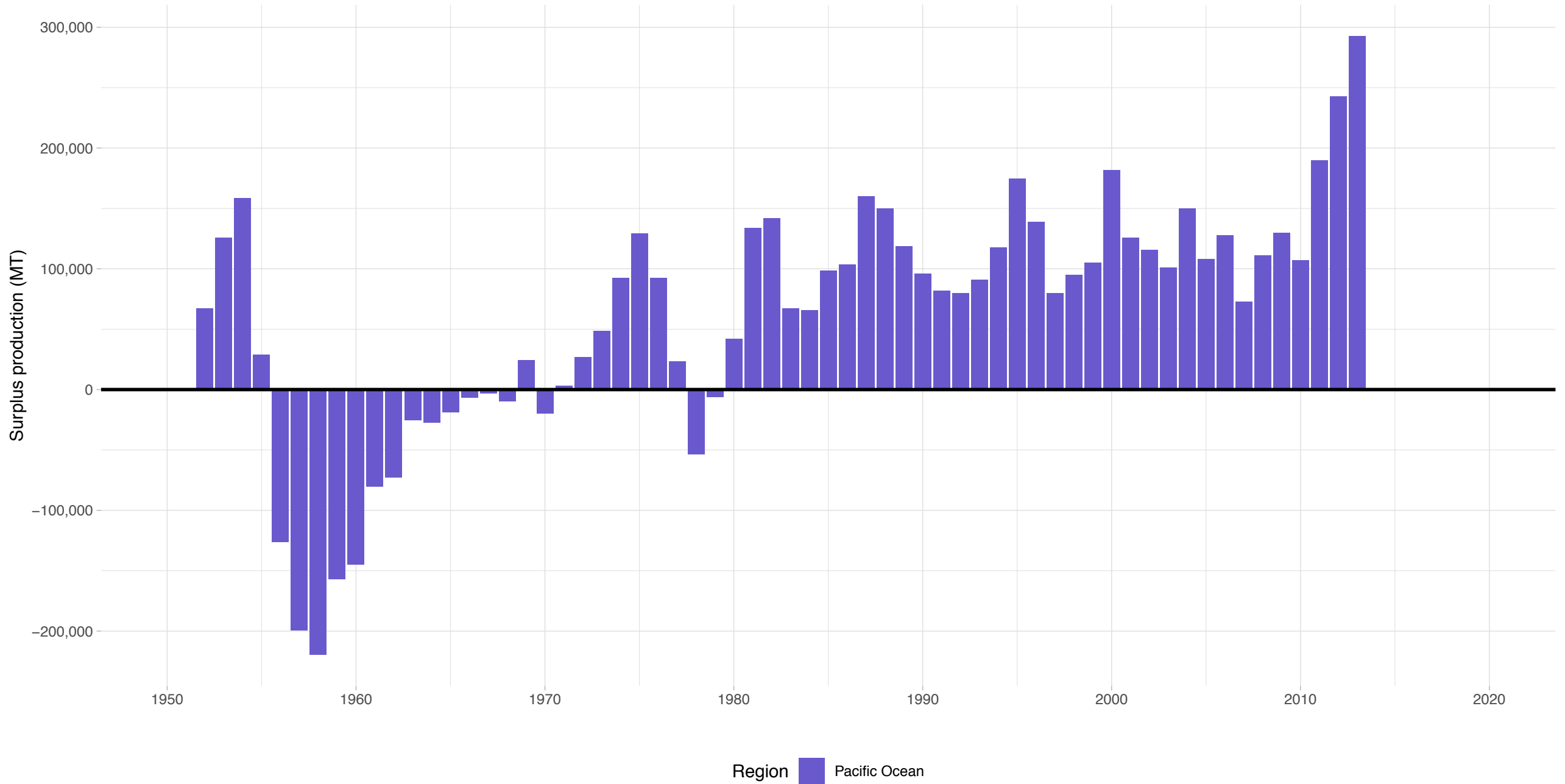
Stock represents 4.35% of average absolute surplus production



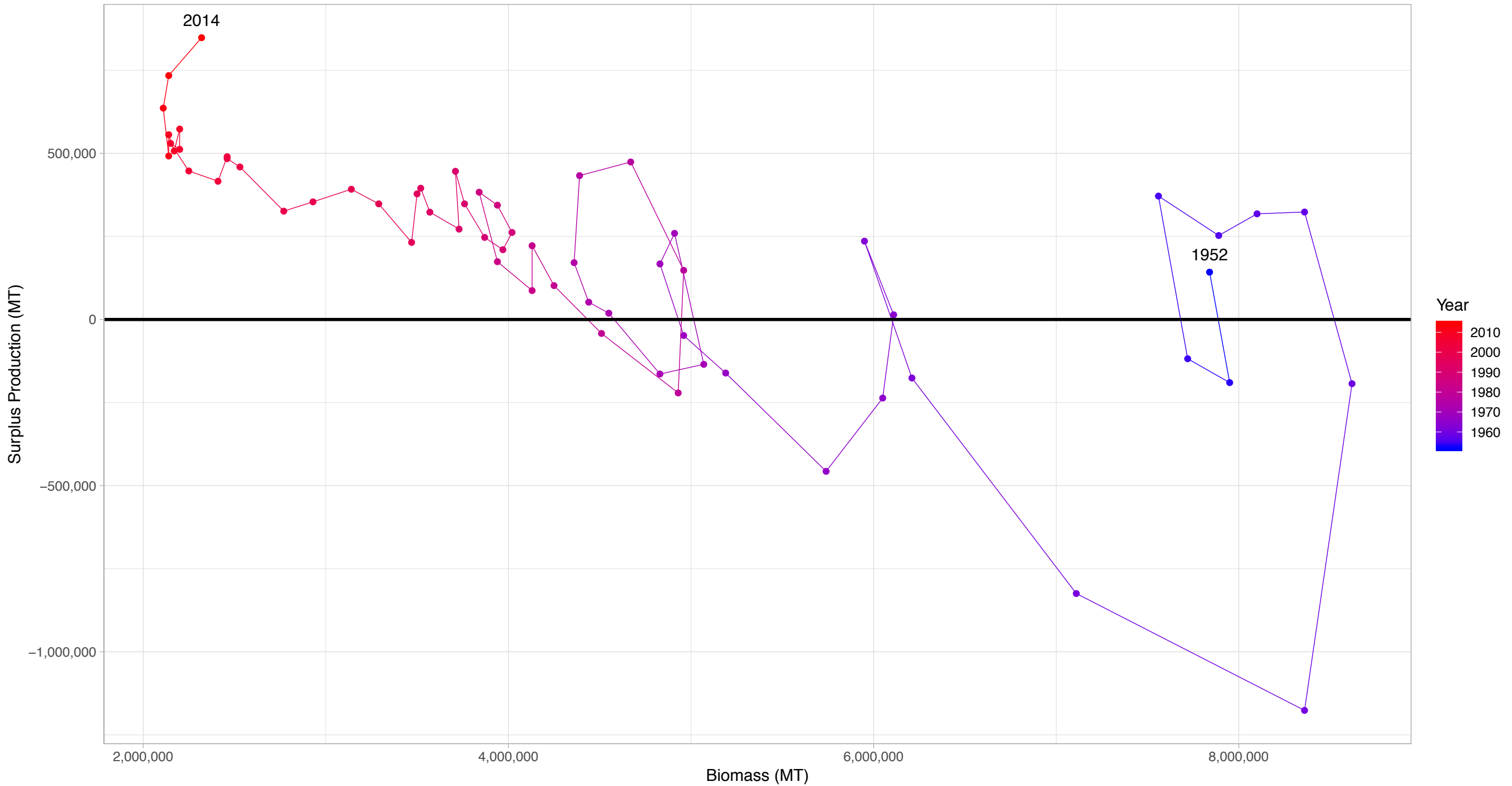
Region Indian Ocean

# Bigeye tuna Central Western Pacific – Tuna–Billfish Taxonomy Group

Stock represents 4.64% of average absolute surplus production



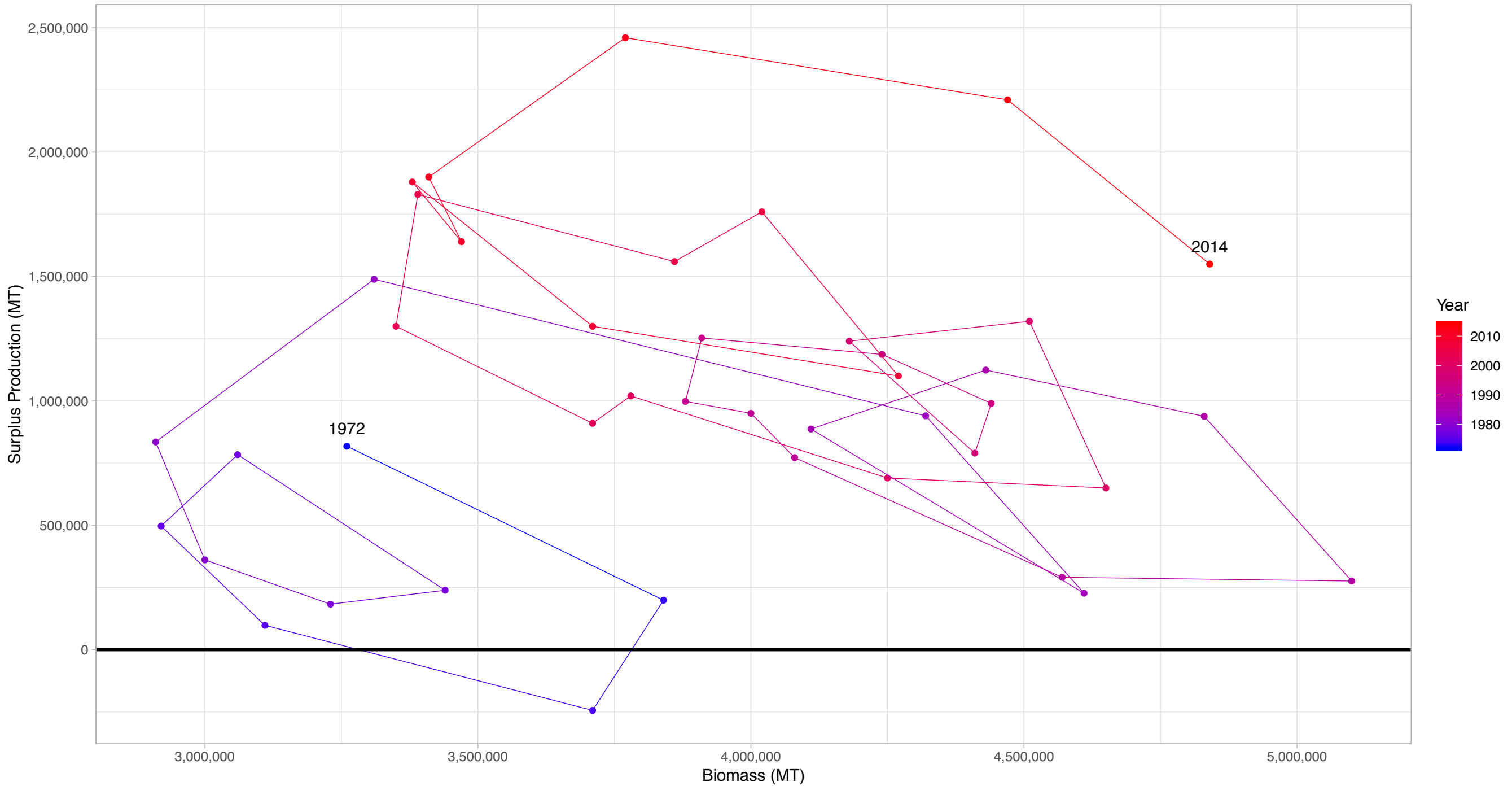
# Yellowfin tuna Central Western Pacific in Tuna-Billfish Taxonomy Group



First and last years with recorded surplus production are labeled

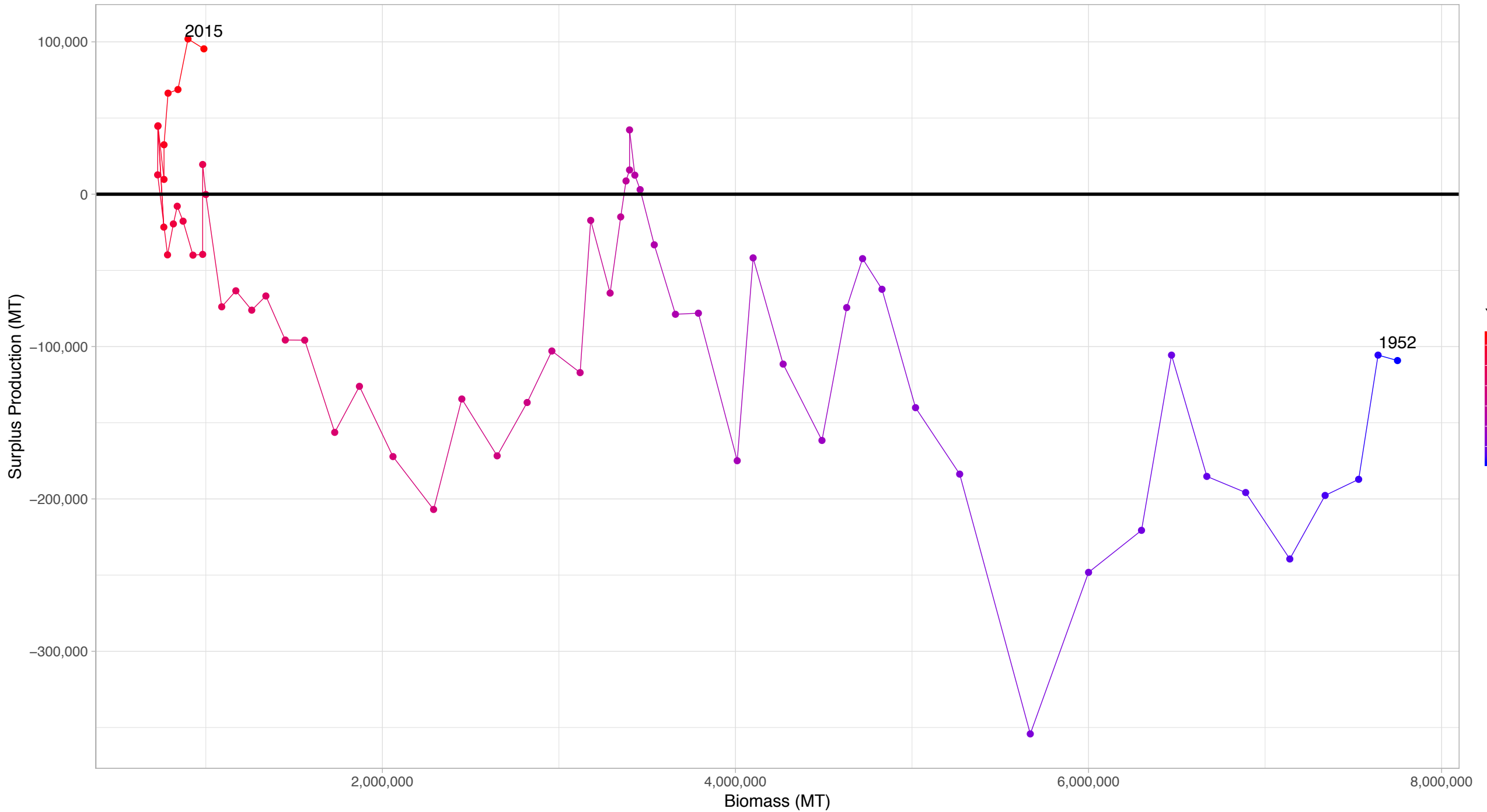


# Skipjack tuna Central Western Pacific in Tuna-Billfish Taxonomy Group



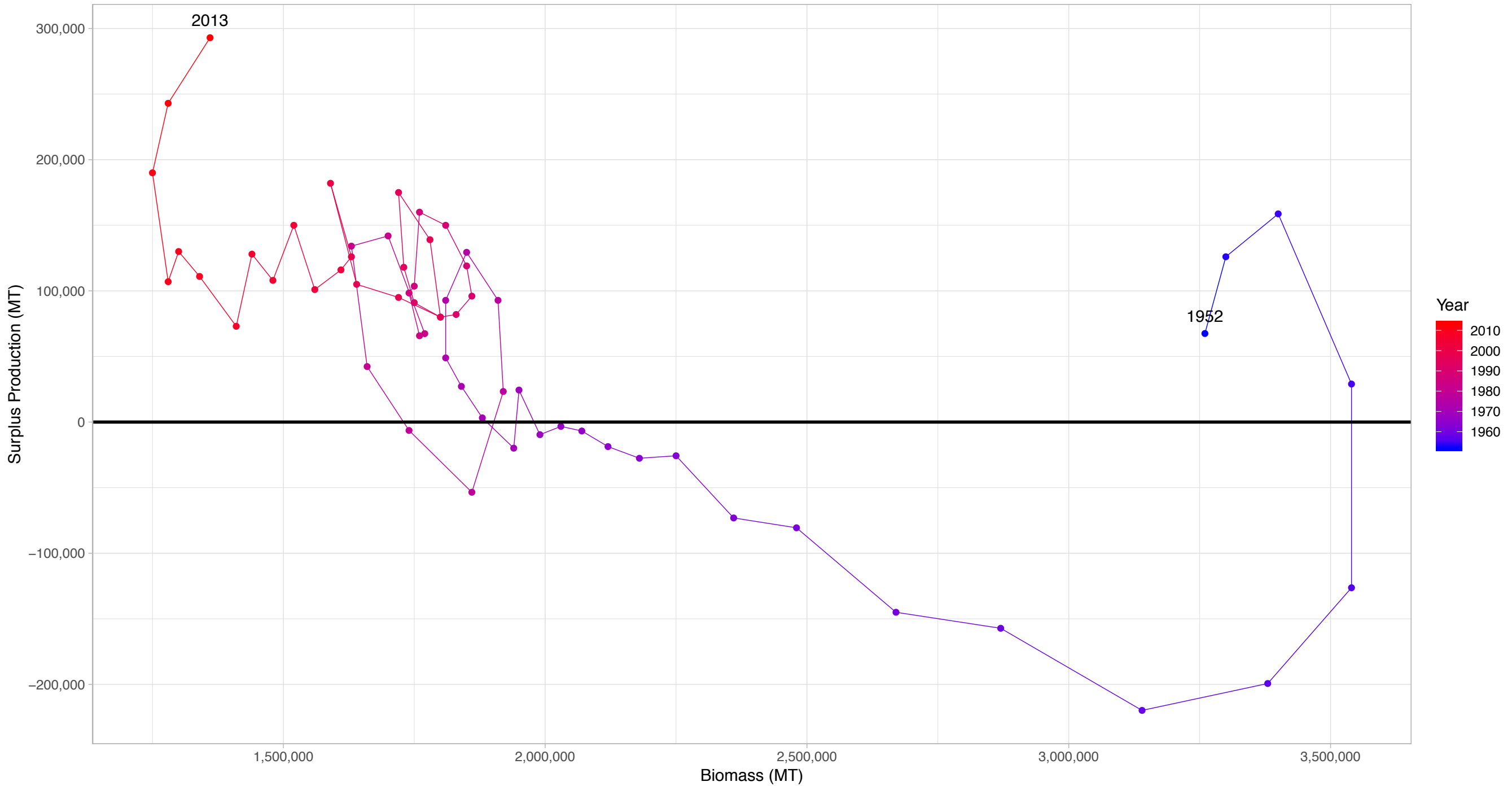
First and last years with recorded surplus production are labeled

# Southern bluefin tuna Southern Oceans in Tuna-Billfish Taxonomy Group



First and last years with recorded surplus production are labeled

# Bigeye tuna Central Western Pacific in Tuna-Billfish Taxonomy Group



First and last years with recorded surplus production are labeled