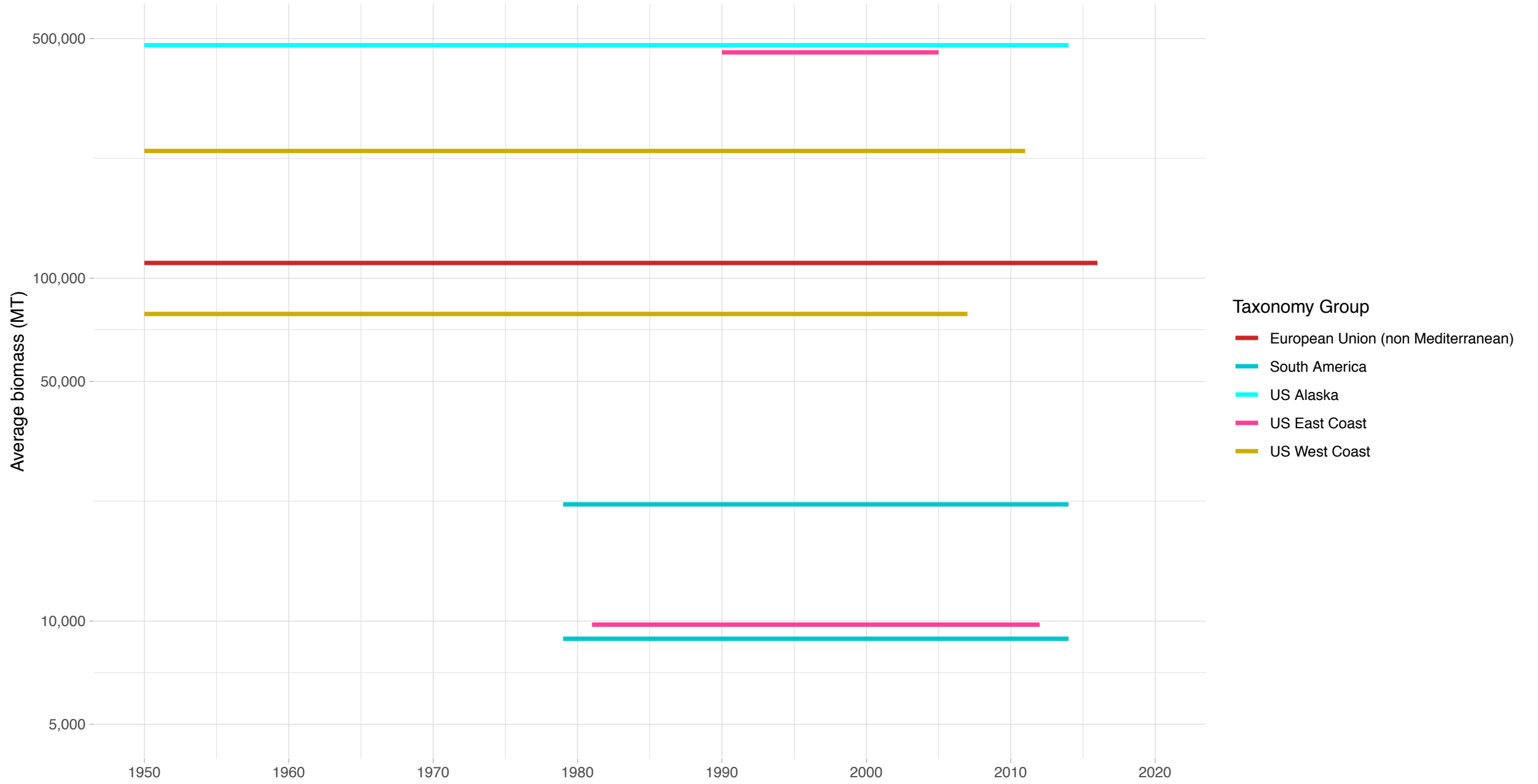
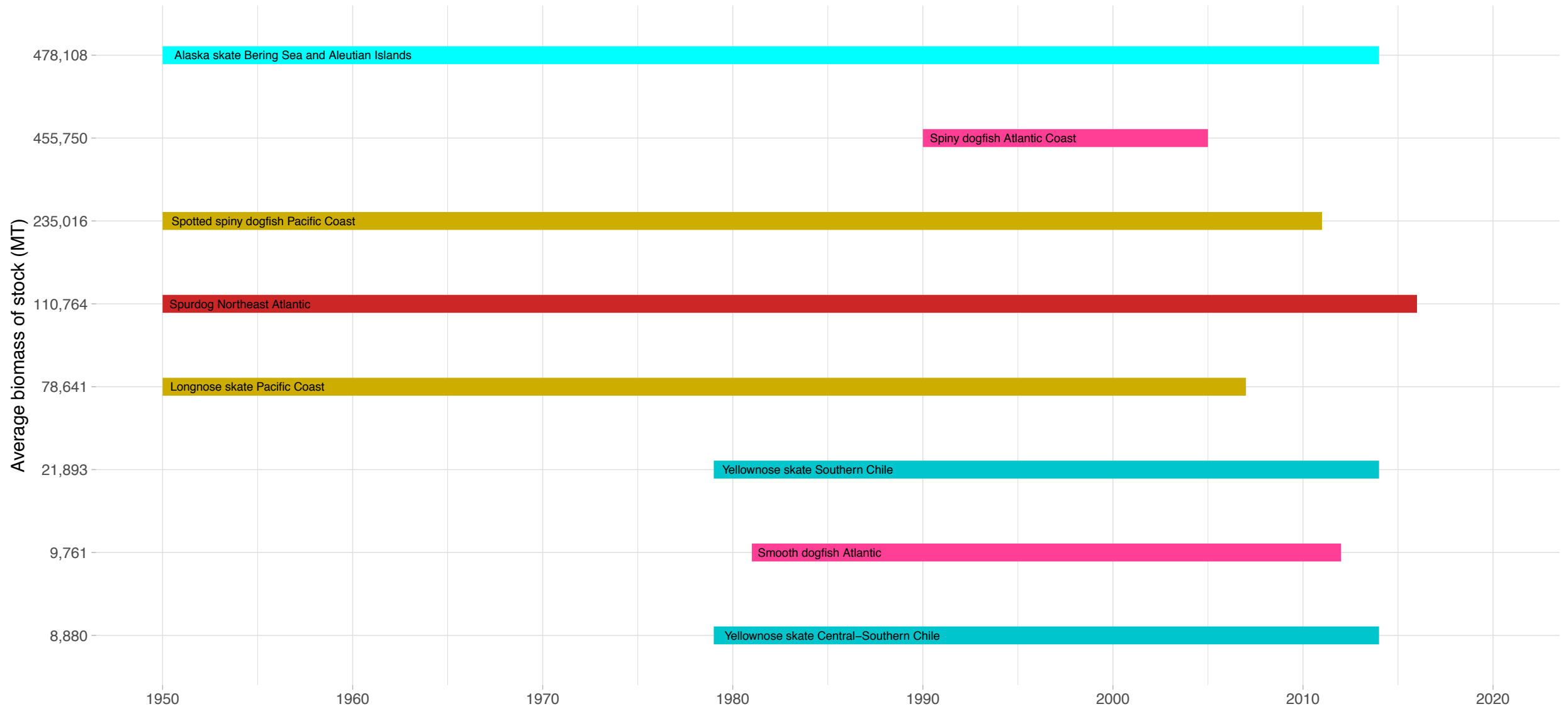


# Biomass Coverage in Elasmobranchs Taxonomy Group




# Biomass Coverage Over Time in Elasmobranchs Taxonomy Group


Stocks ordered from lowest to highest average biomass

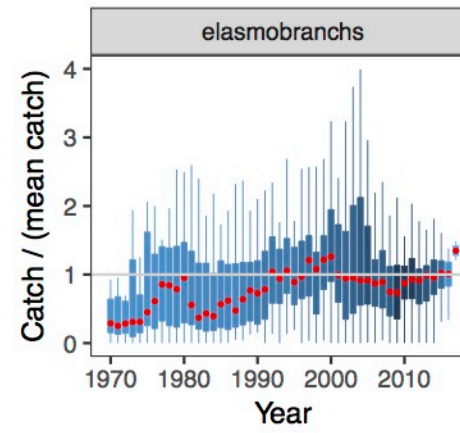
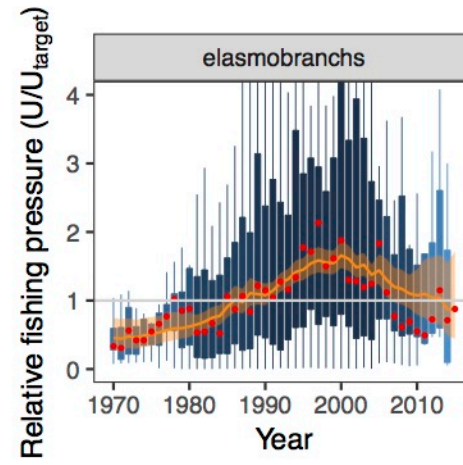
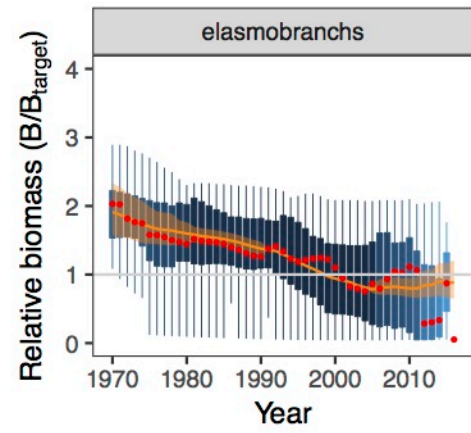


Taxonomy Group ■ European Union (non Mediterranean) ■ South America ■ US Alaska ■ US East Coast ■ US West Coast



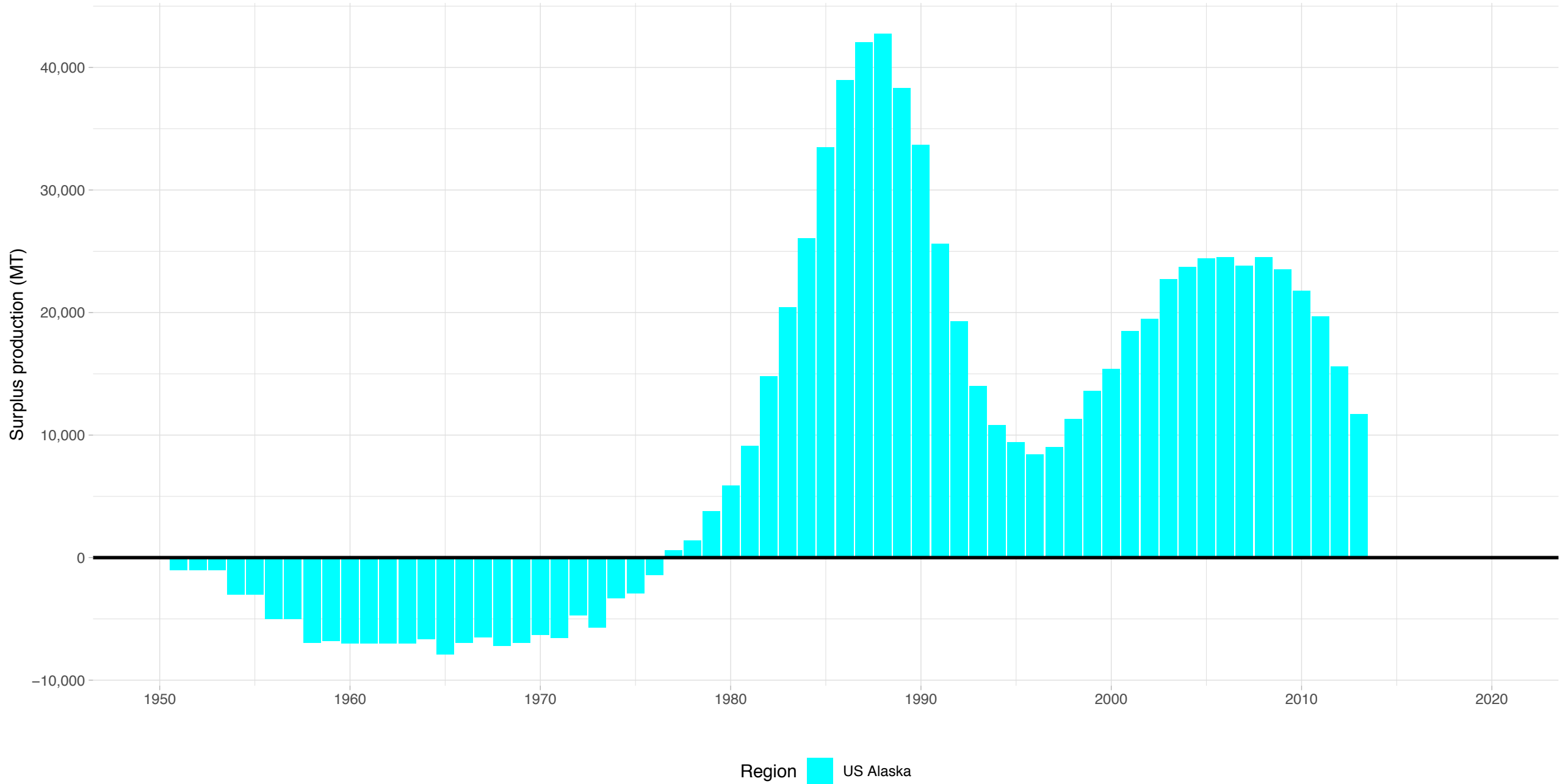
Summary method:  Median

 State-space model prediction



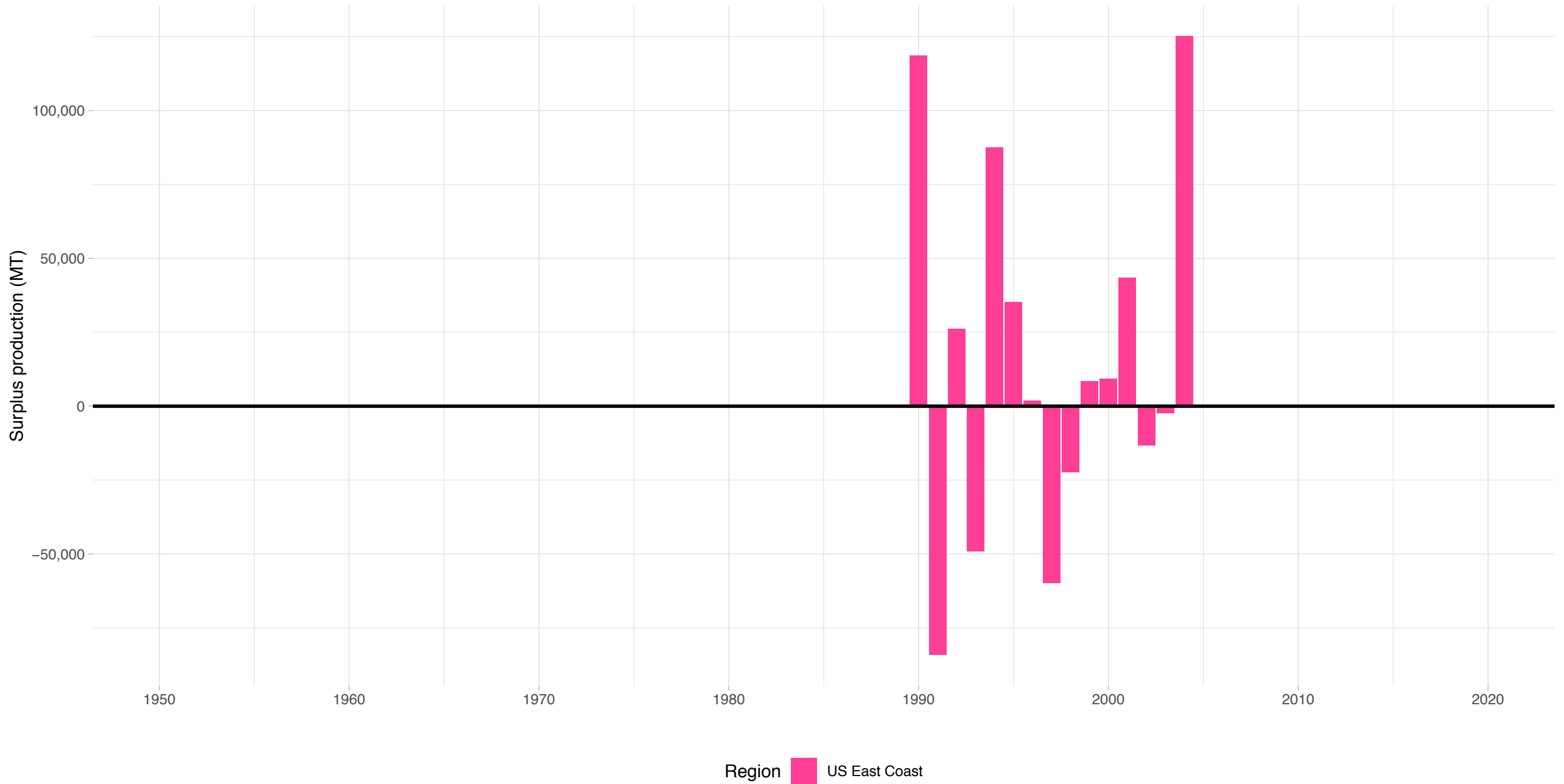
# Alaska skate Bering Sea and Aleutian Islands – Elasmobranchs Taxonomy Group

Stock represents 16.1% of average absolute surplus production



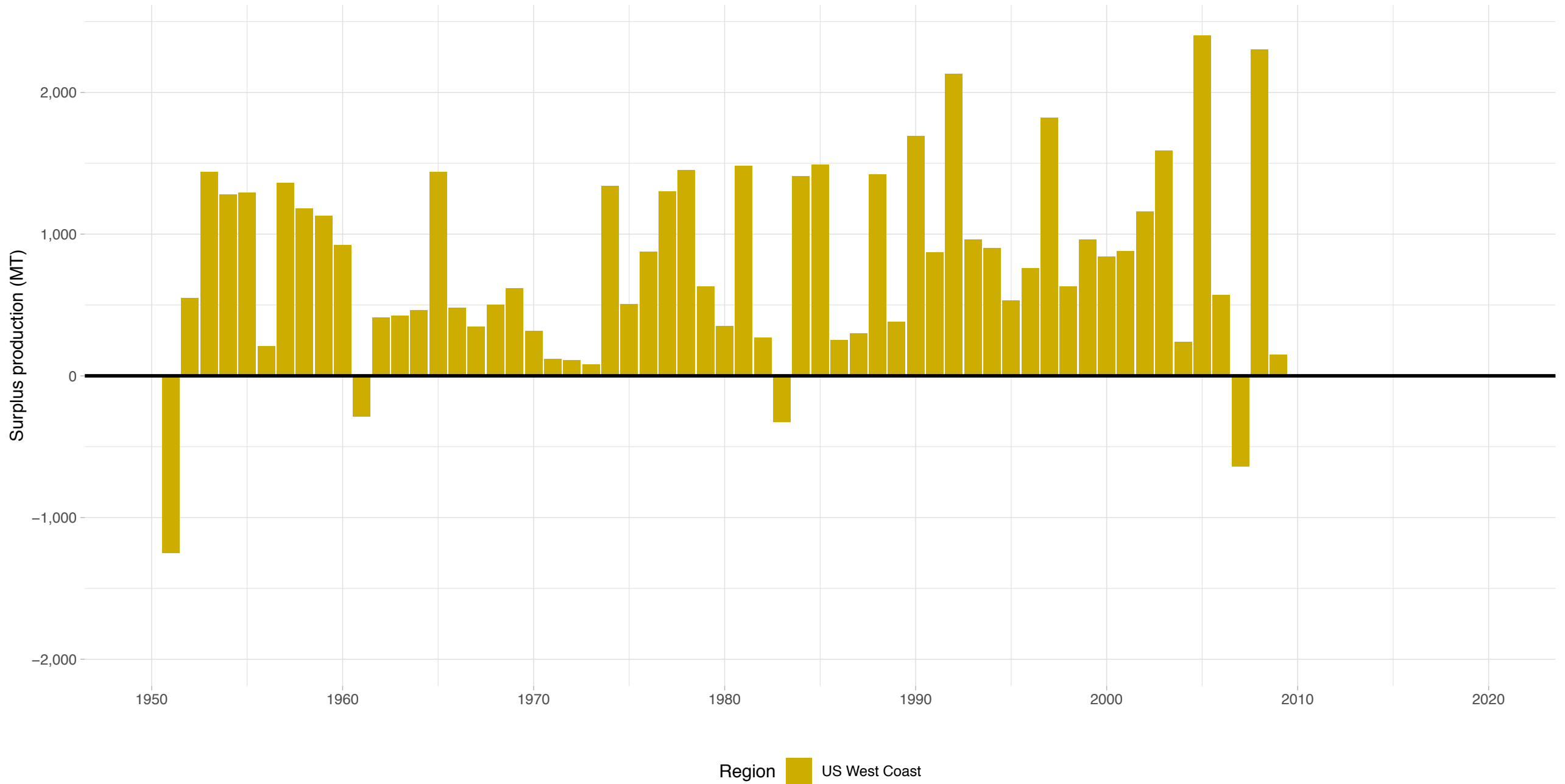
# Spiny dogfish Atlantic Coast – Elasmobranchs Taxonomy Group

Stock represents 55.2% of average absolute surplus production



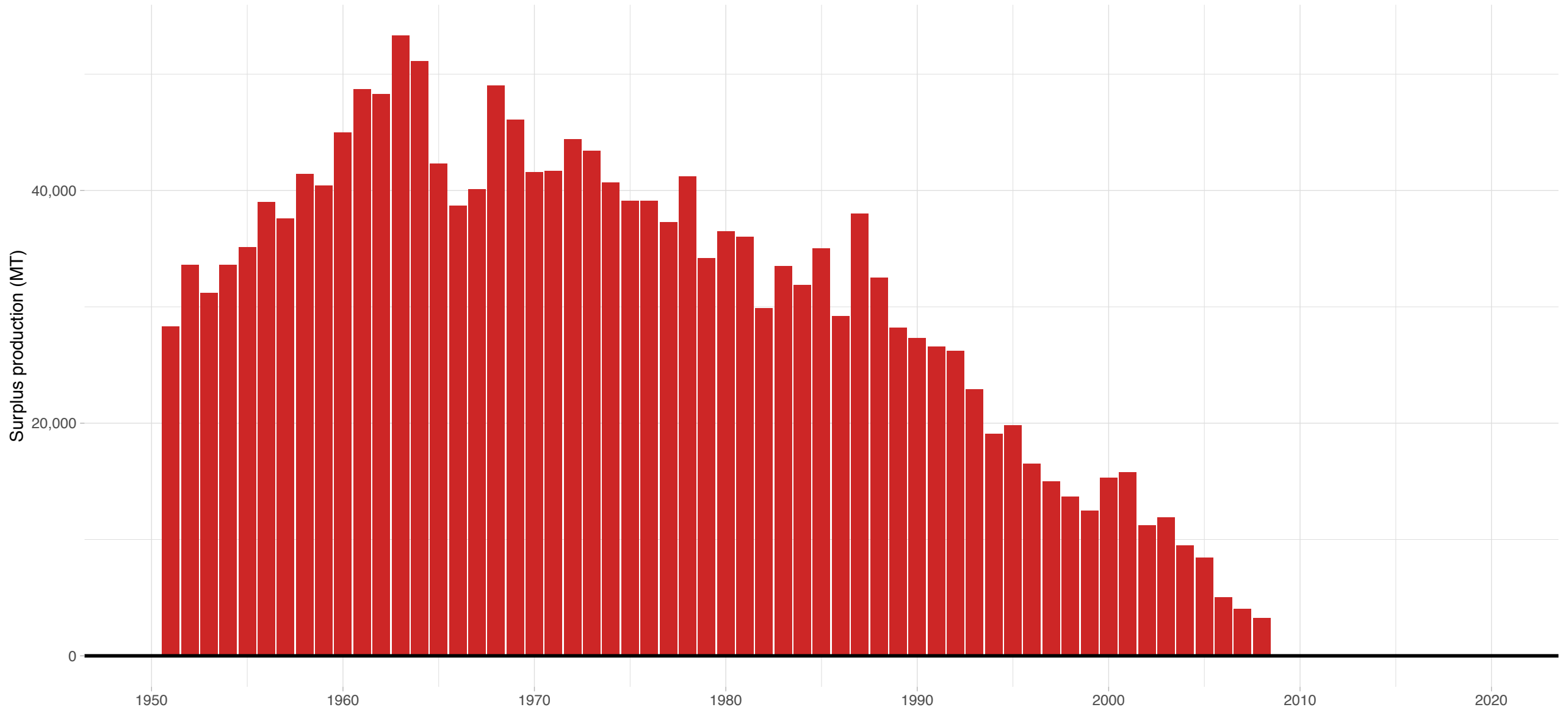
# Spotted spiny dogfish Pacific Coast – Elasmobranchs Taxonomy Group

Stock represents 1.18% of average absolute surplus production



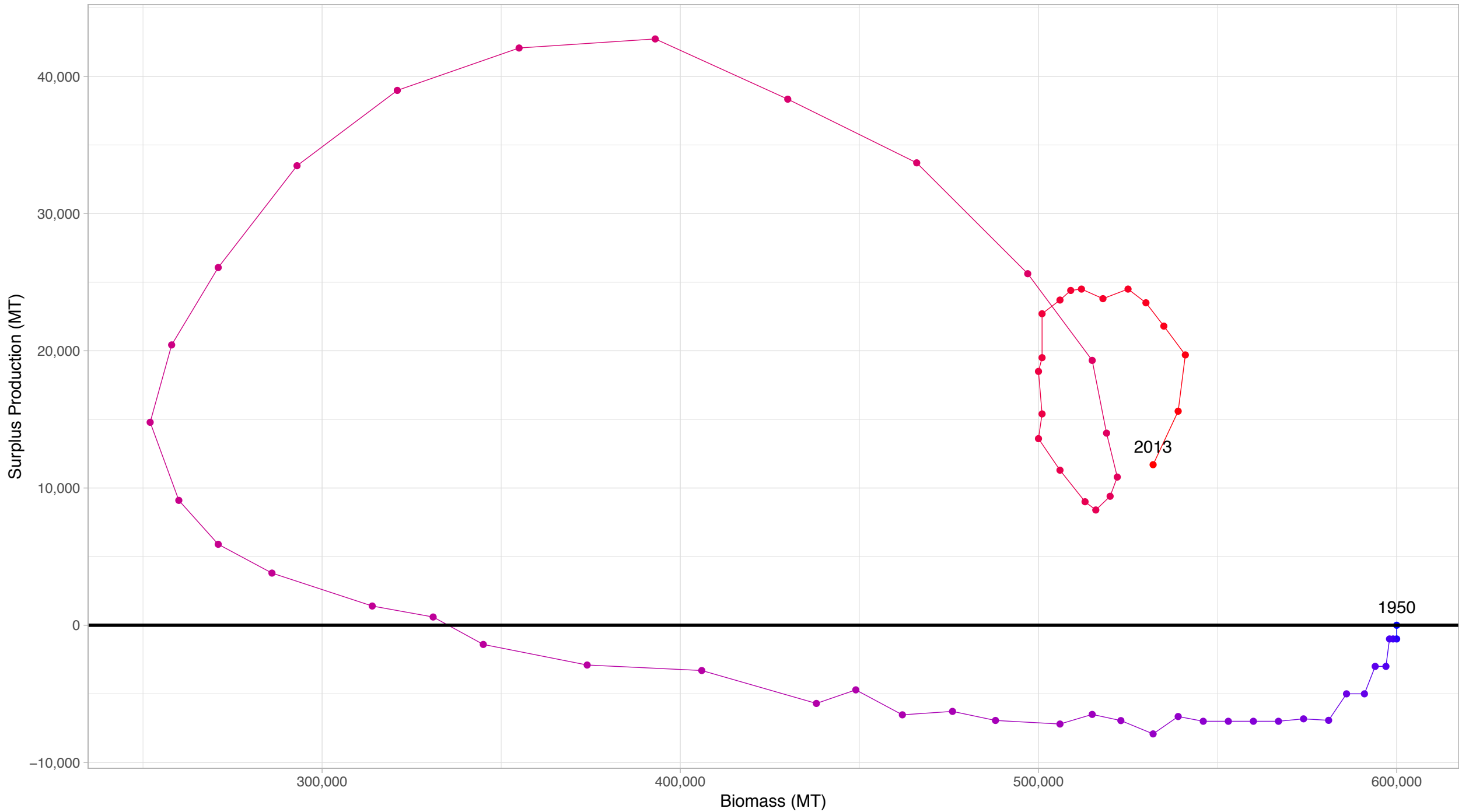
# Spurdog Northeast Atlantic – Elasmobranchs Taxonomy Group

Stock represents 25.2% of average absolute surplus production



Region ■ European Union (non-Mediterranean)

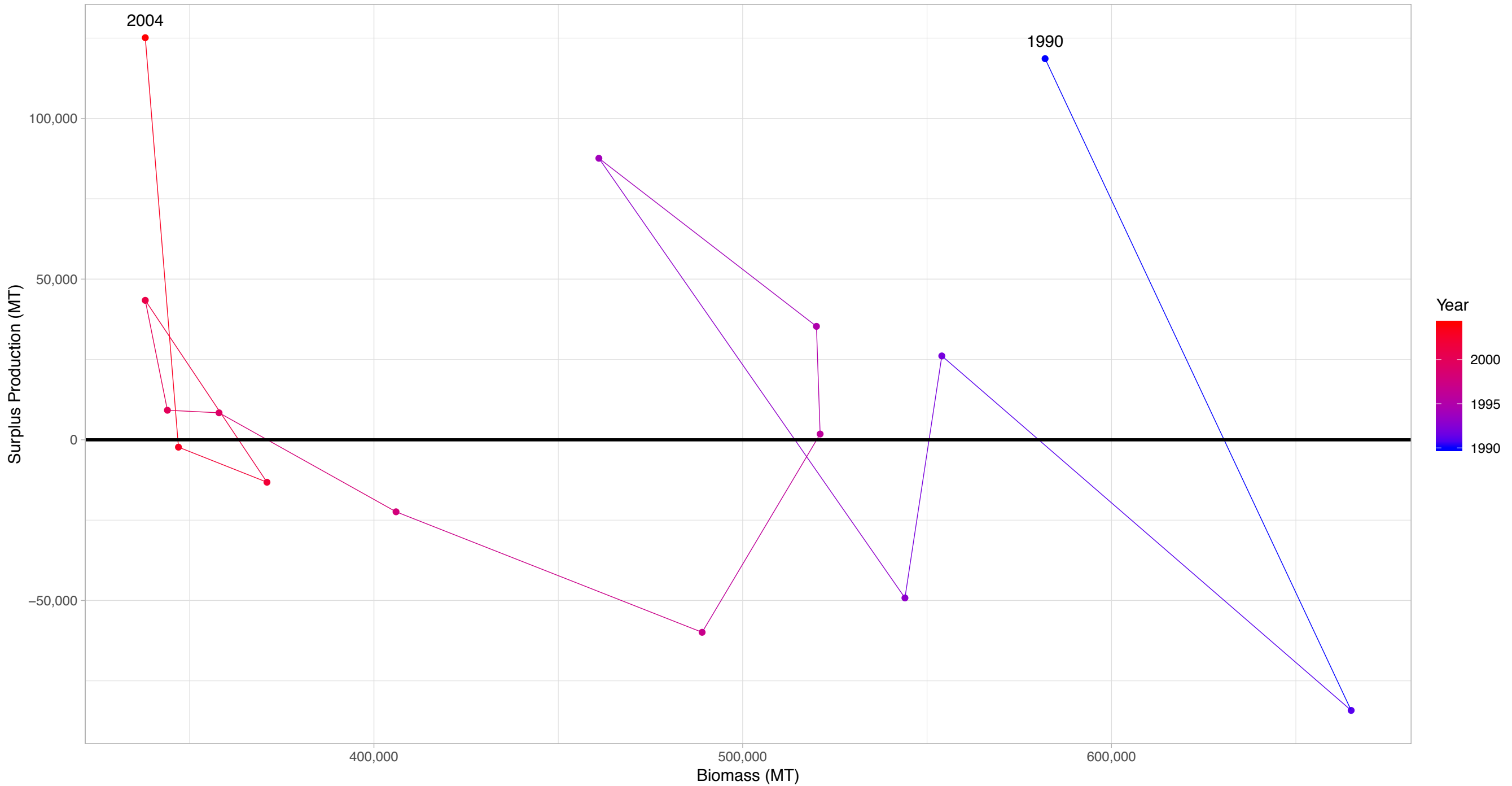
# Alaska skate Bering Sea and Aleutian Islands in Elasmobranchs Taxonomy Group



First and last years with recorded surplus production are labeled

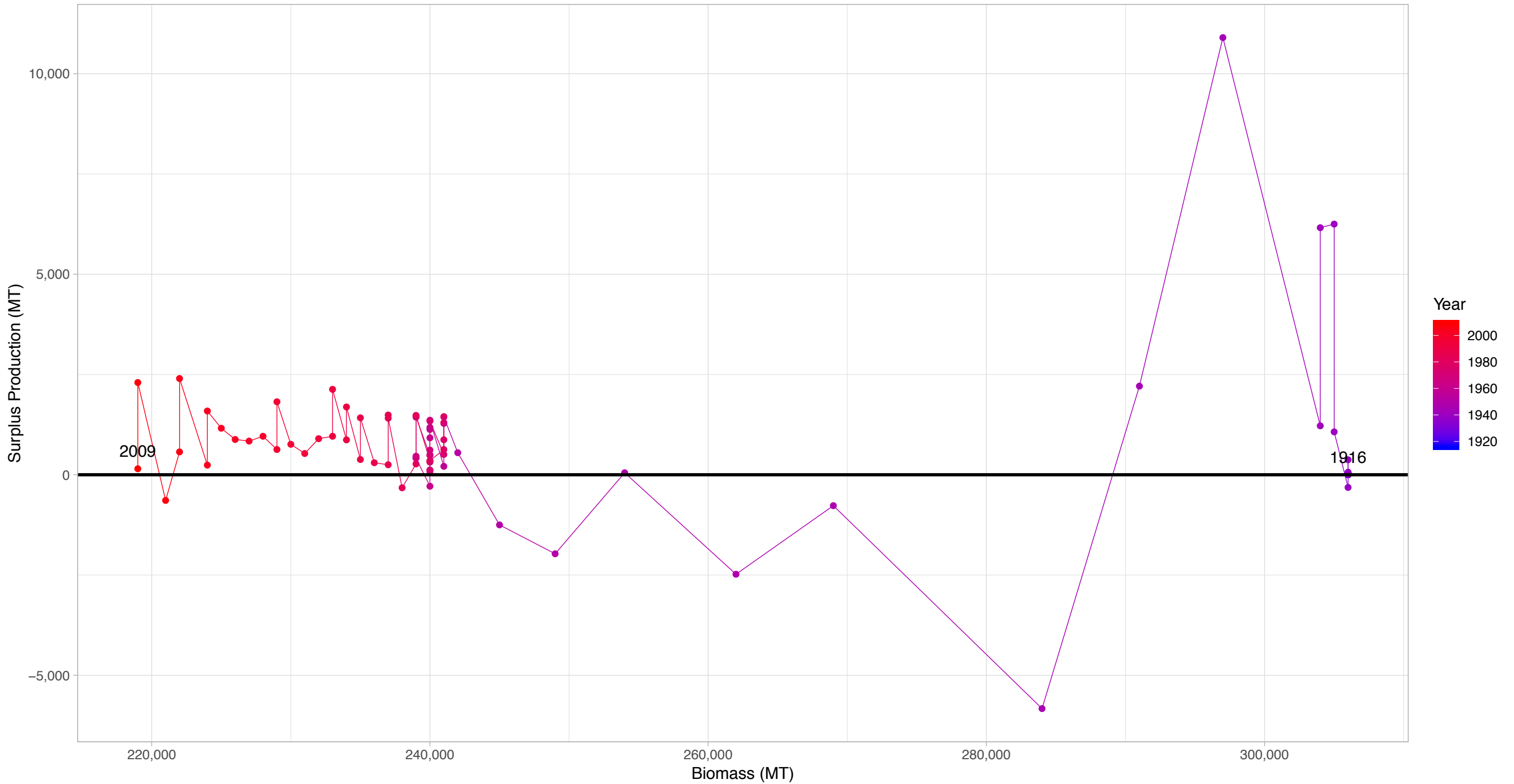


# Spiny dogfish Atlantic Coast in Elasmobranchs Taxonomy Group

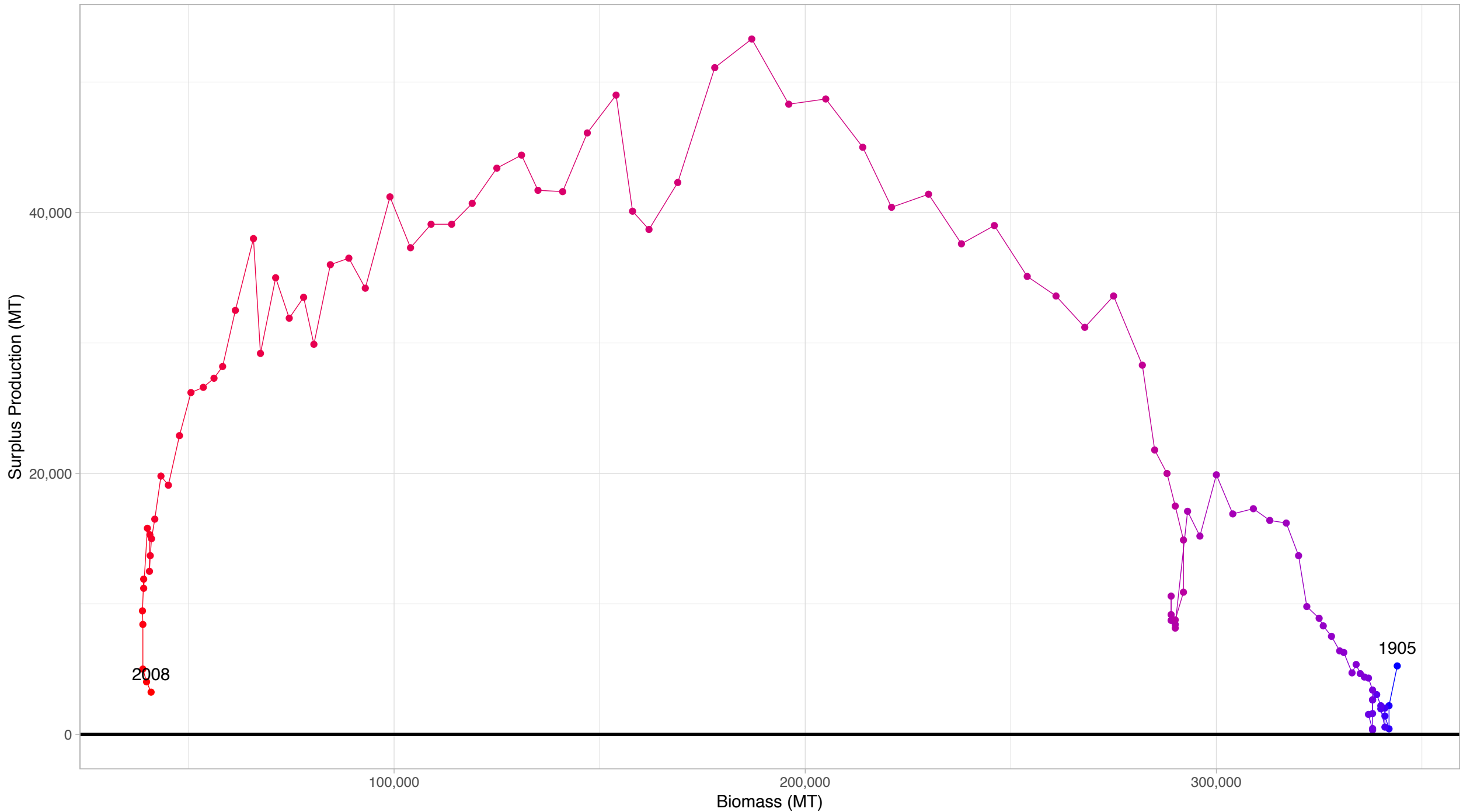


First and last years with recorded surplus production are labeled

# Spotted spiny dogfish Pacific Coast in Elasmobranchs Taxonomy Group



# Spurdog Northeast Atlantic in Elasmobranchs Taxonomy Group



First and last years with recorded surplus production are labeled