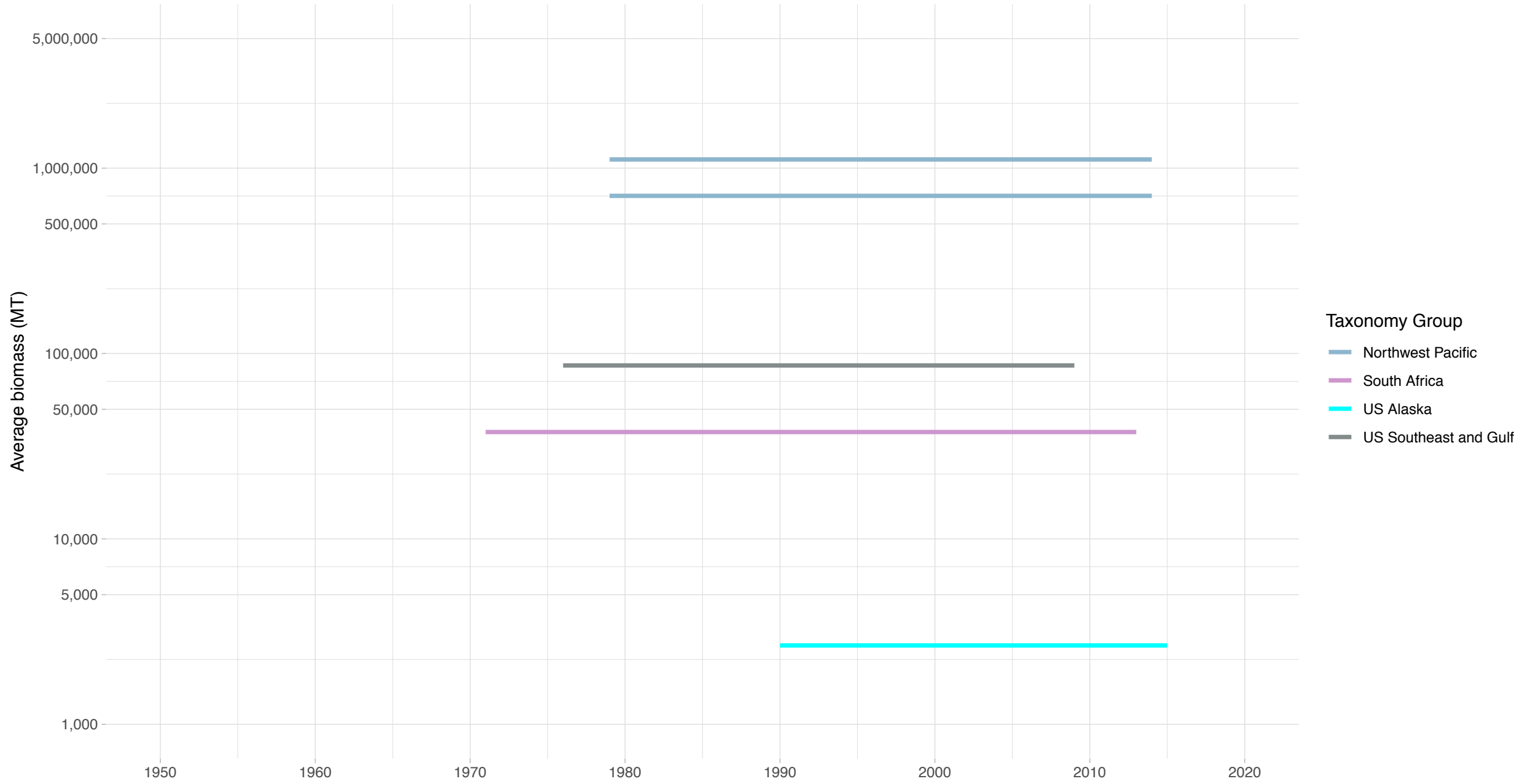
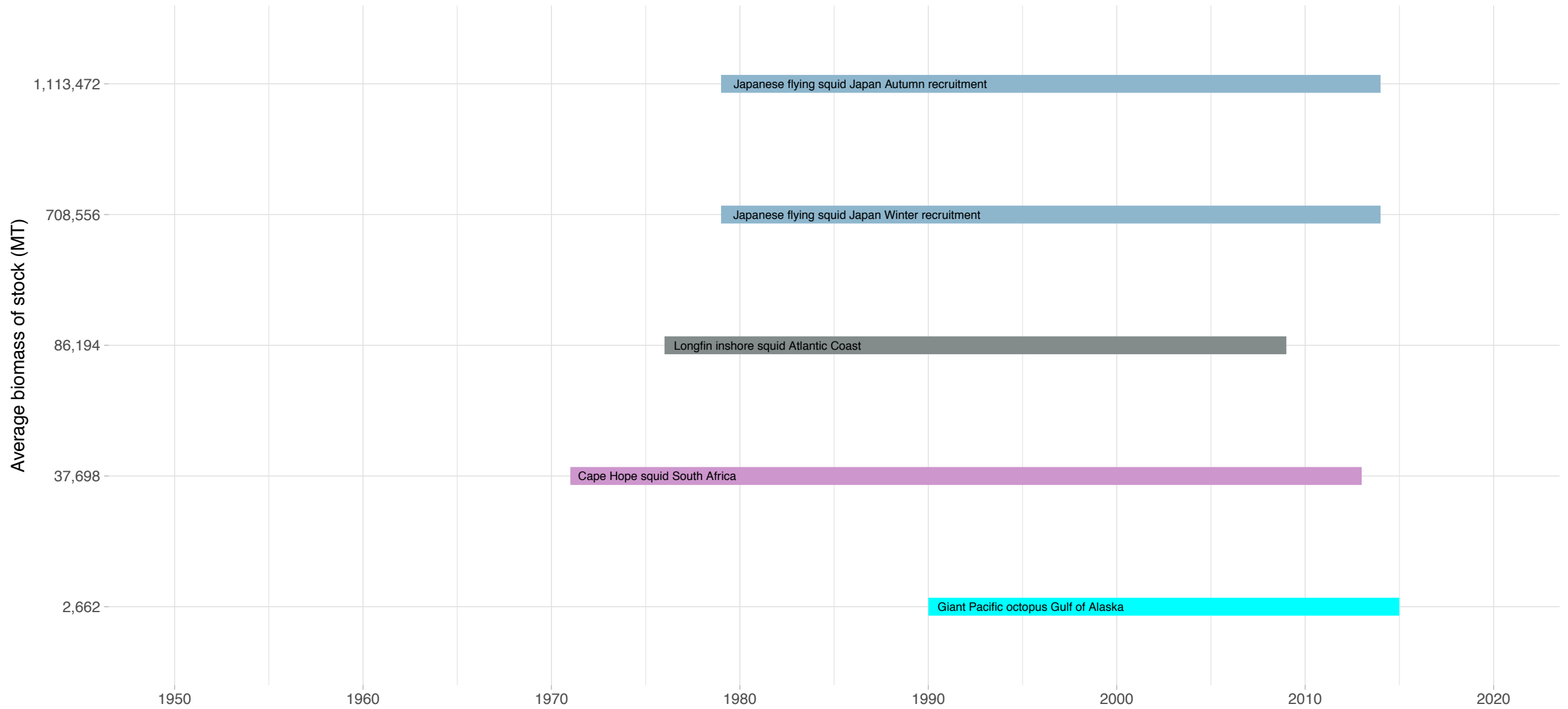


Biomass Coverage in Cephalopods Taxonomy Group




Biomass Coverage Over Time in Cephalopods Taxonomy Group


Stocks ordered from lowest to highest average biomass

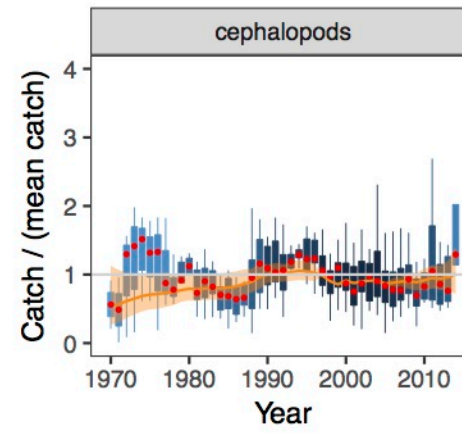
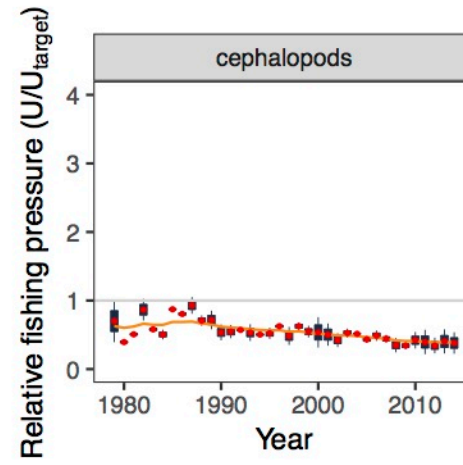
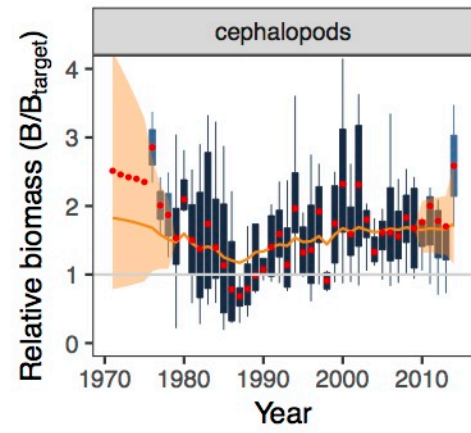


Taxonomy Group Northwest Pacific South Africa US Alaska US Southeast and Gulf



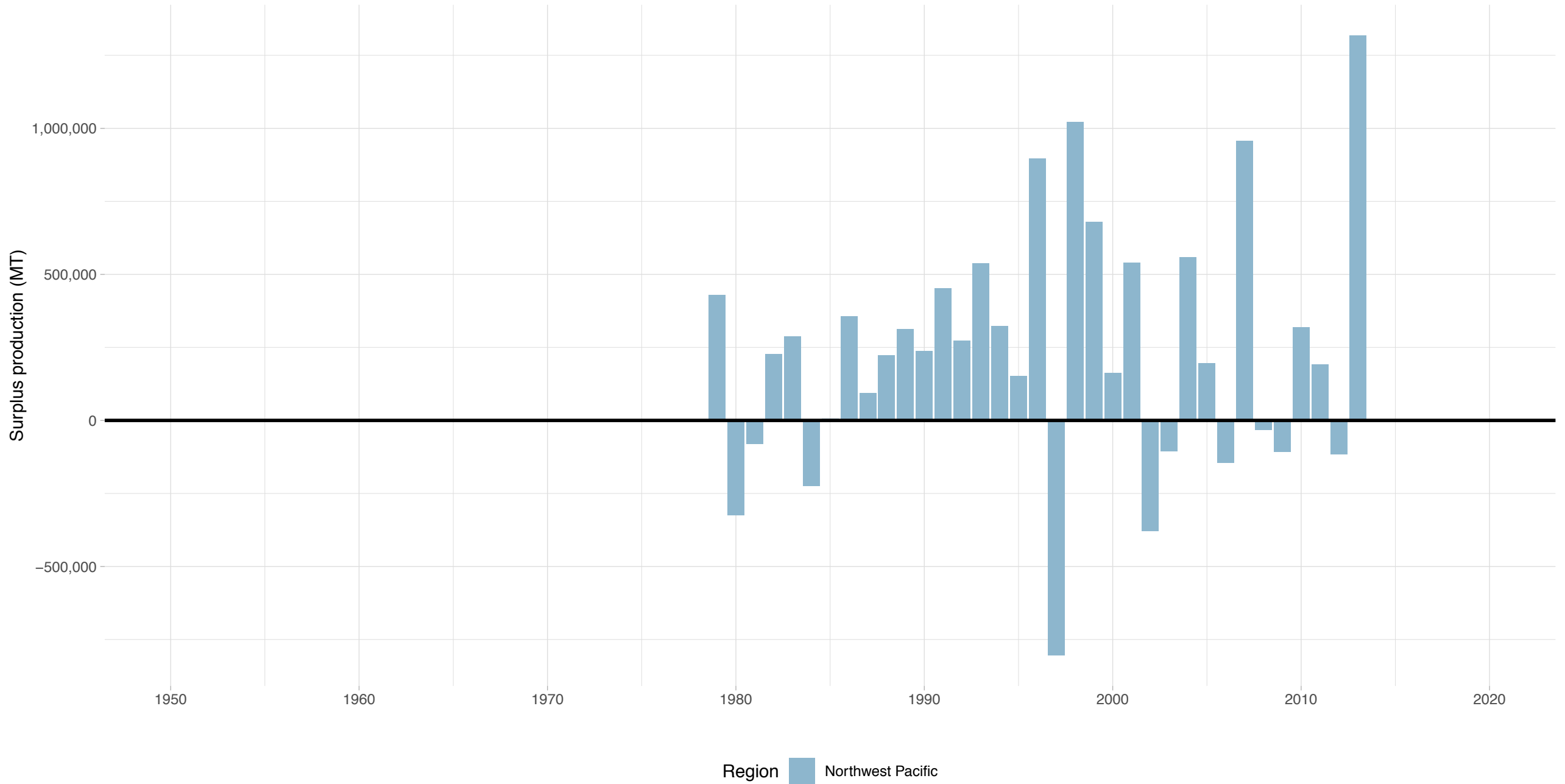
Summary method:  Median

 State-space model prediction



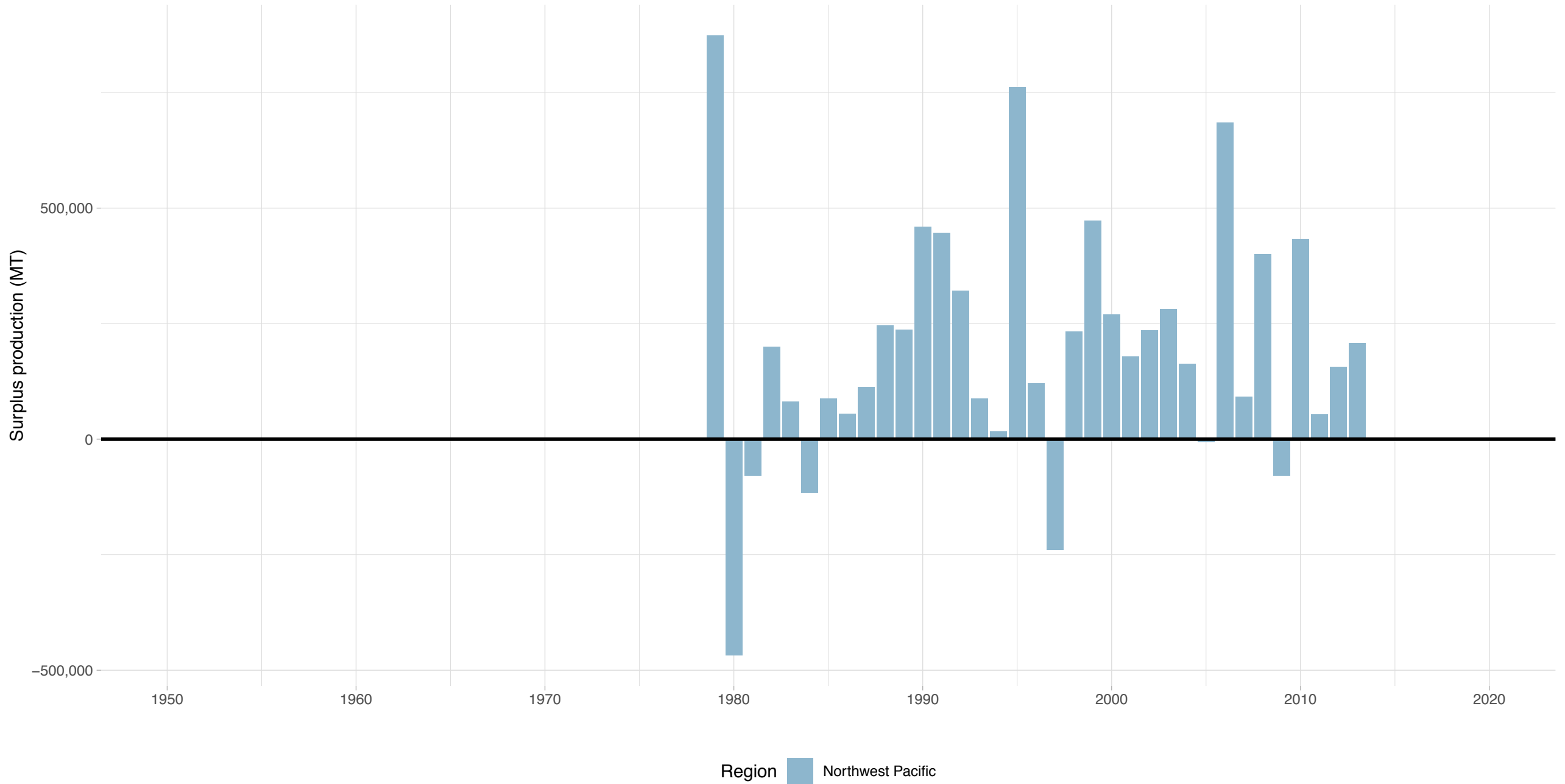
Japanese flying squid Japan Autumn recruitment – Cephalopods Taxonomy Group

Stock represents 54.6% of average absolute surplus production



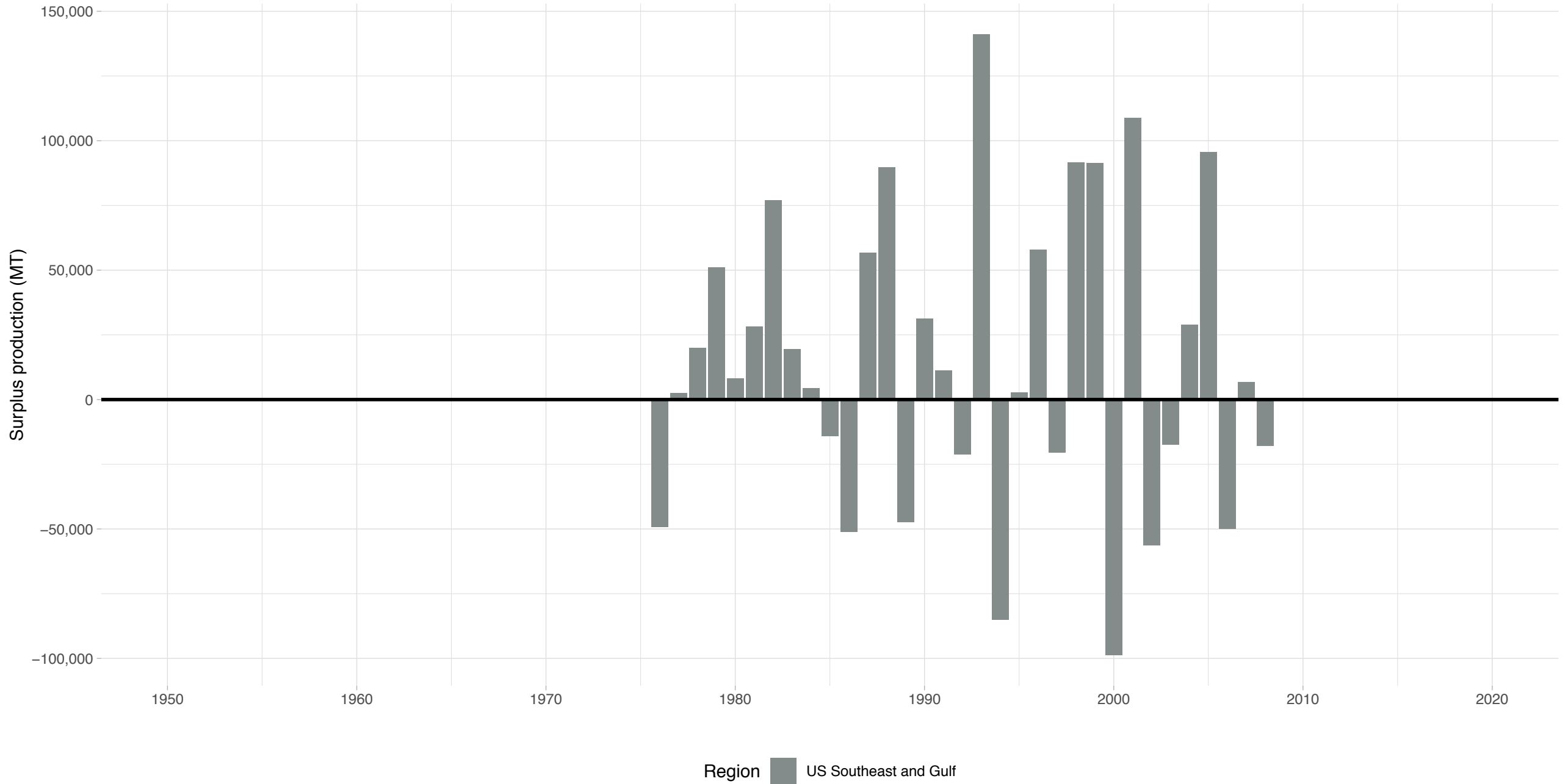
Japanese flying squid Japan Winter recruitment – Cephalopods Taxonomy Group

Stock represents 37.4% of average absolute surplus production



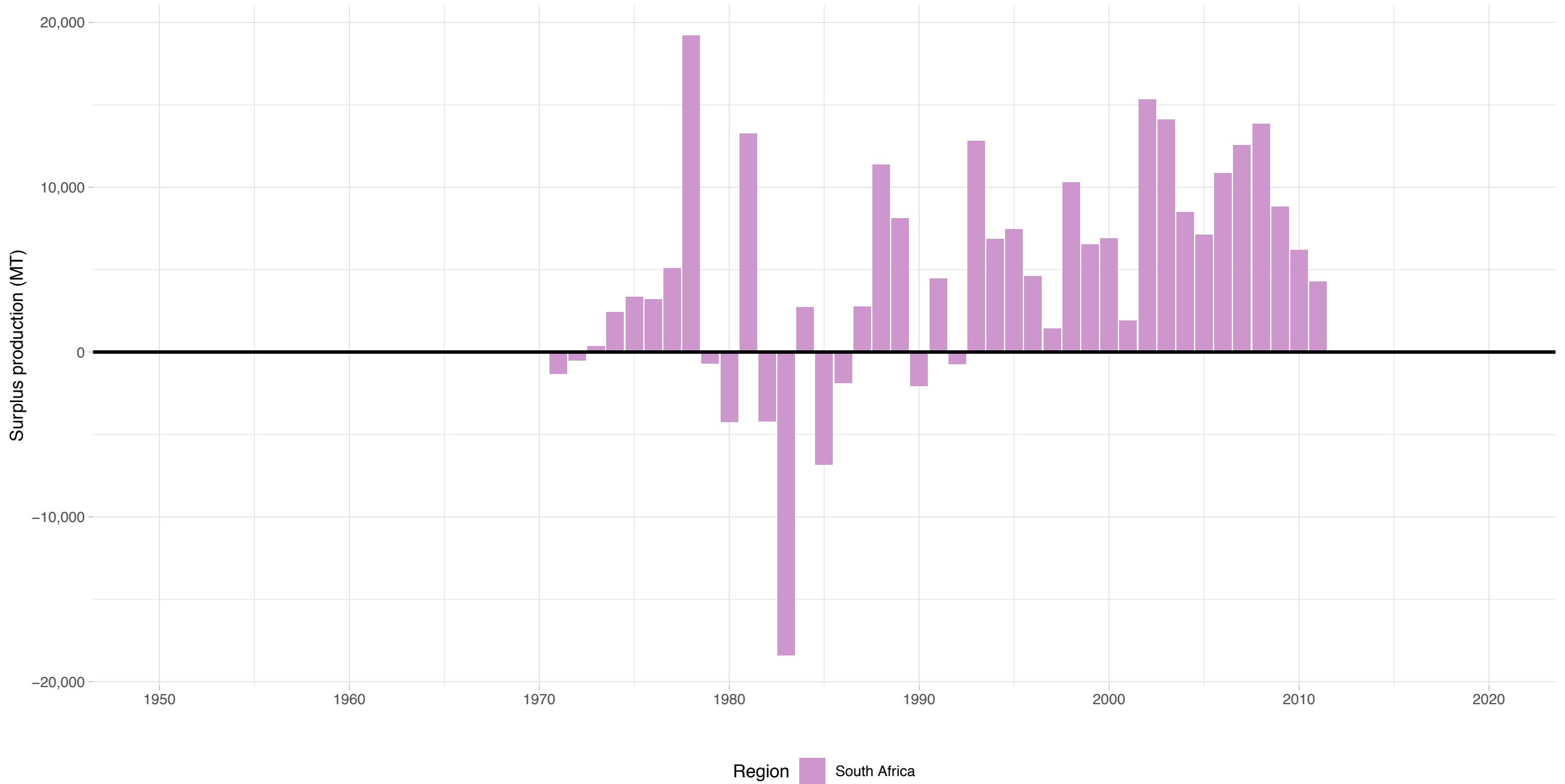
Longfin inshore squid Atlantic Coast – Cephalopods Taxonomy Group

Stock represents 6.88% of average absolute surplus production

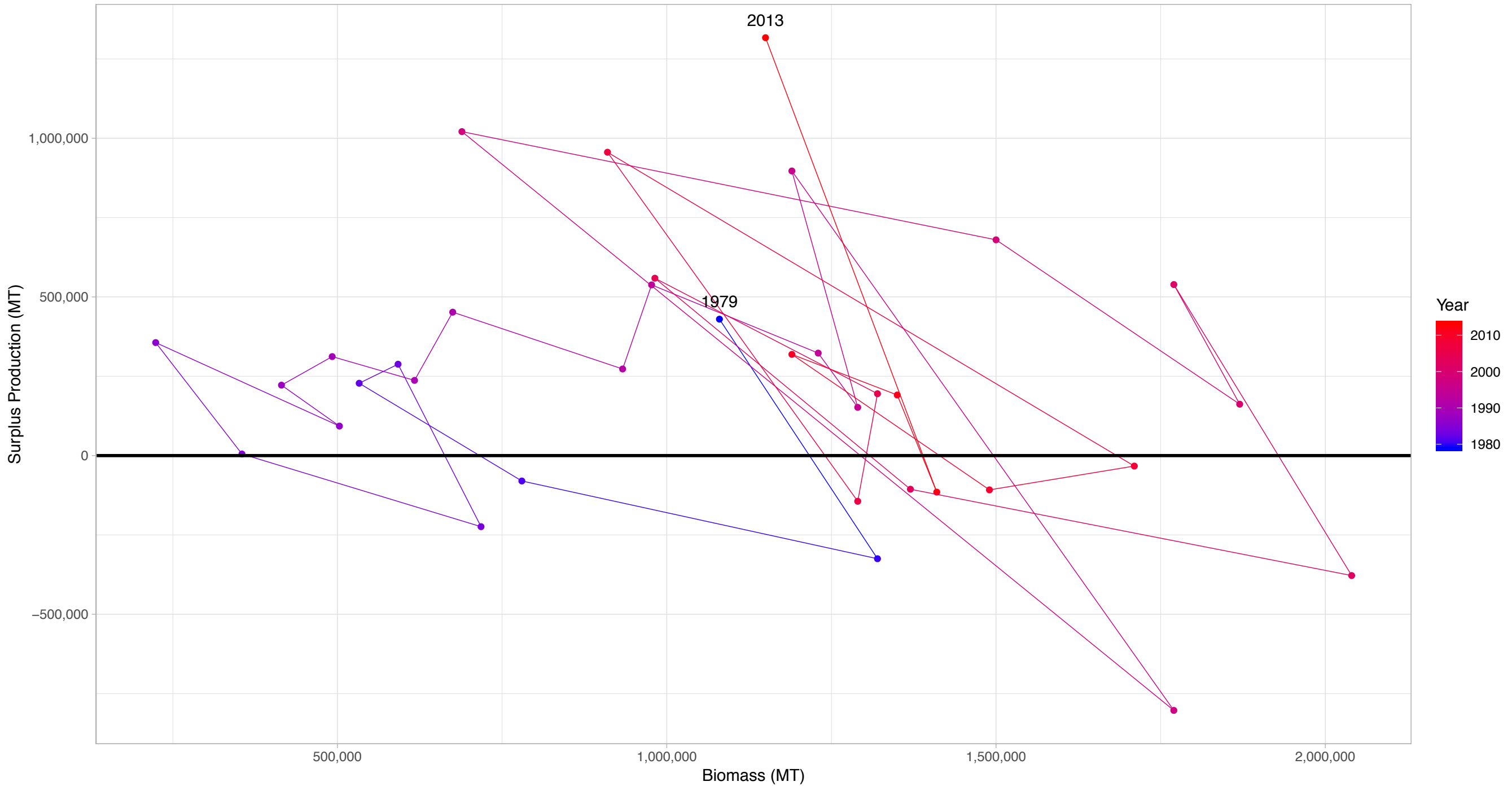


Cape Hope squid South Africa – Cephalopods Taxonomy Group

Stock represents 0.989% of average absolute surplus production

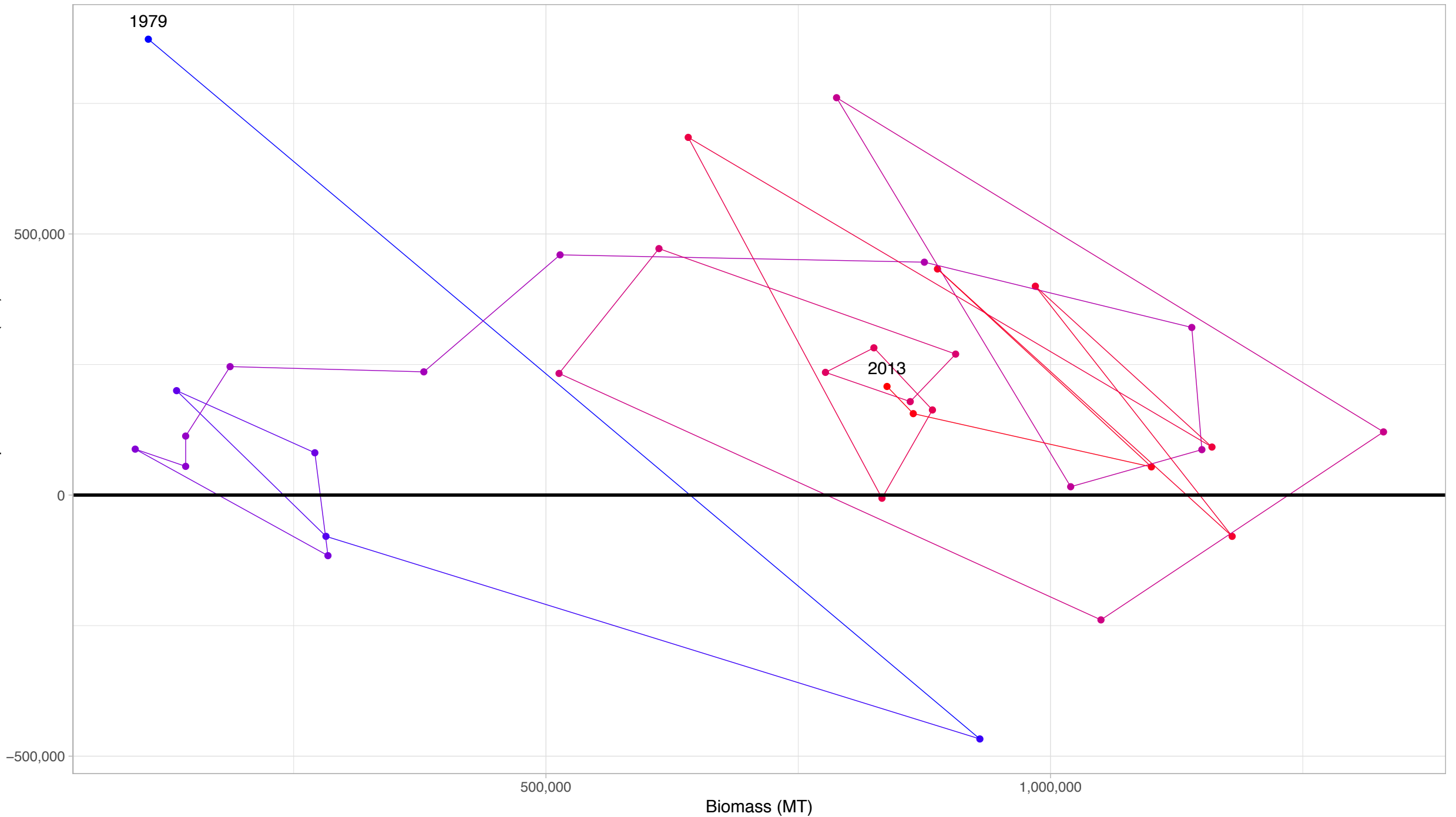


Japanese flying squid Japan Autumn recruitment in Cephalopods Taxonomy Group



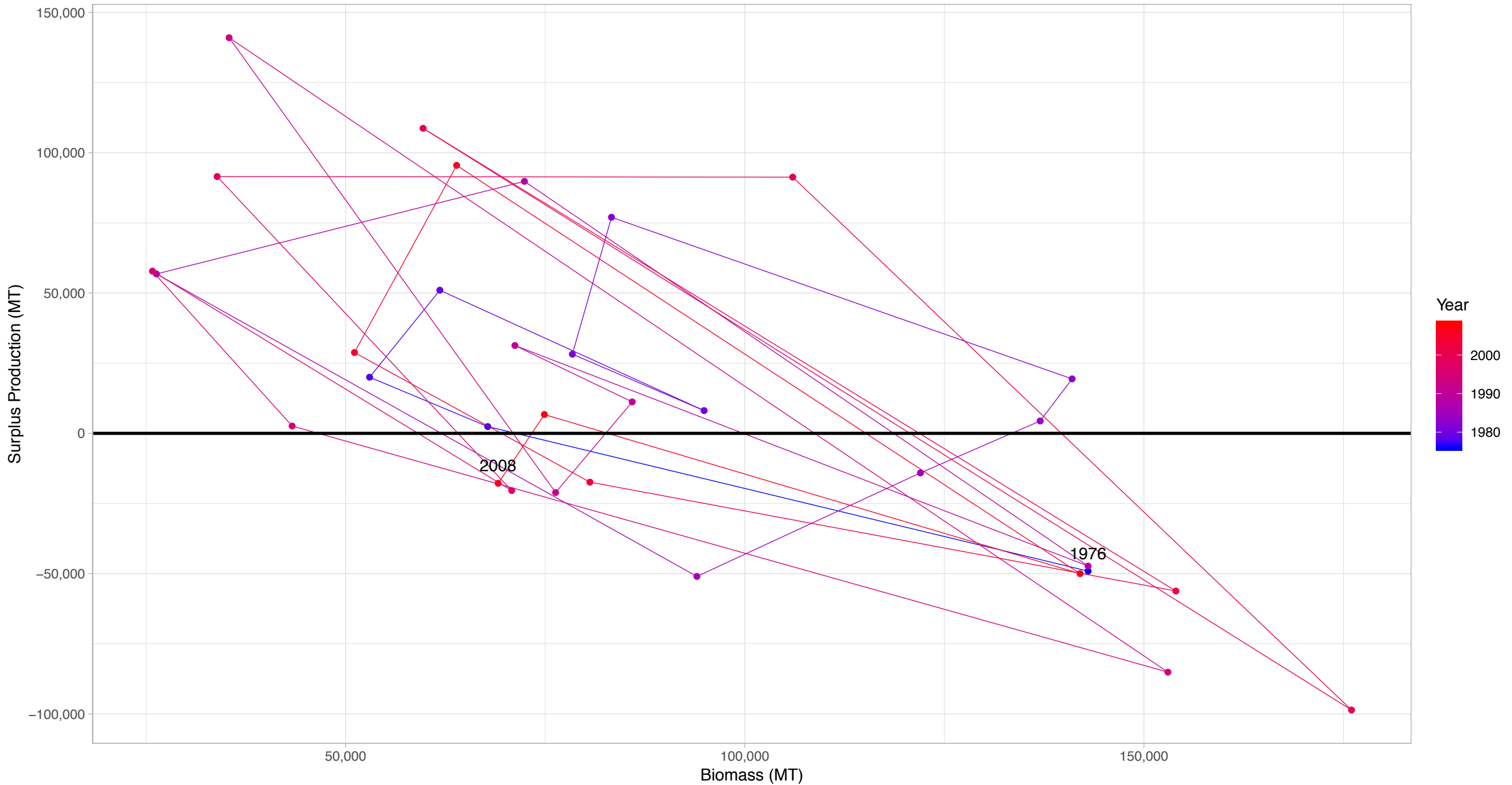
First and last years with recorded surplus production are labeled

Japanese flying squid Japan Winter recruitment in Cephalopods Taxonomy Group



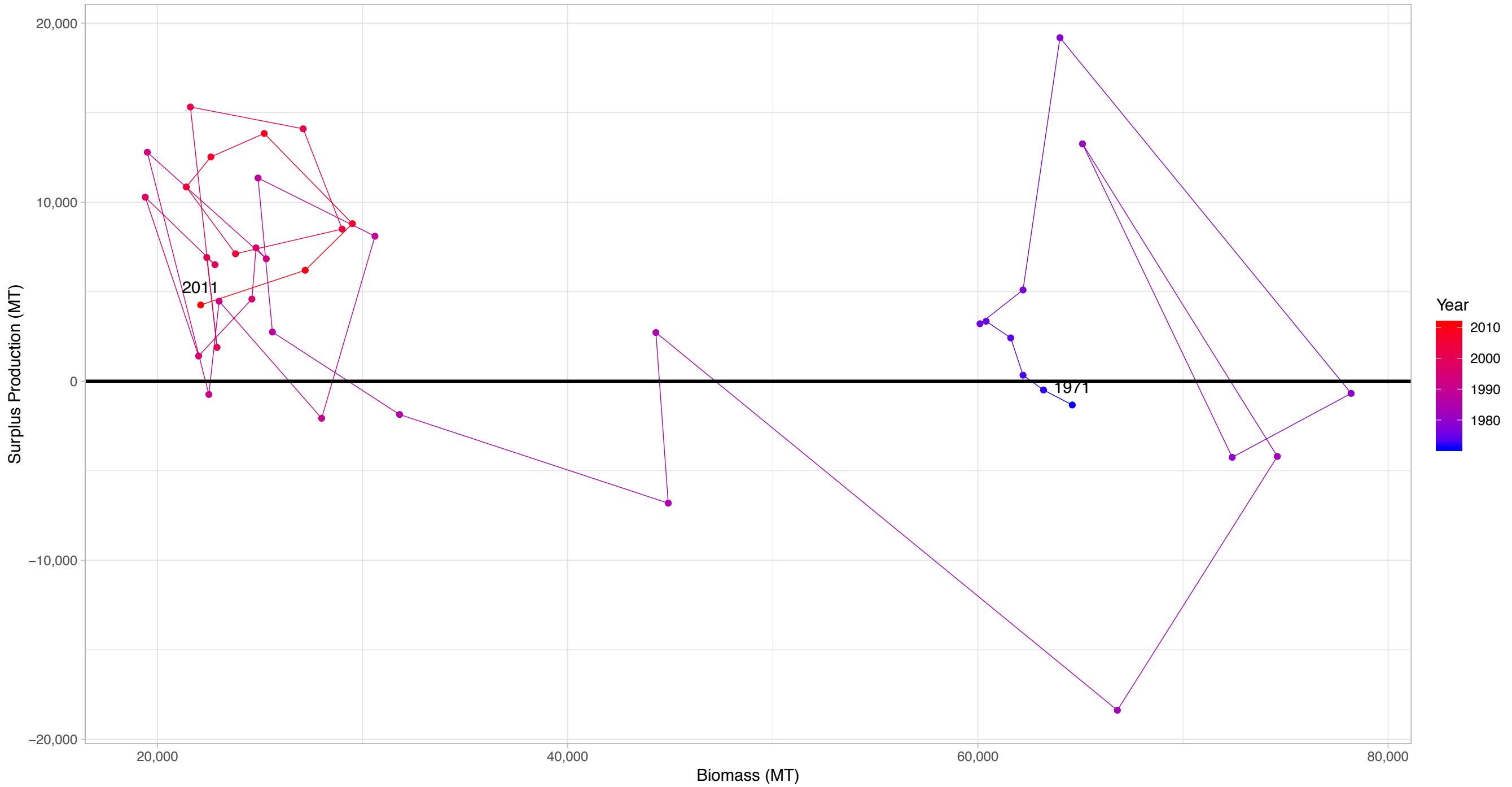
First and last years with recorded surplus production are labeled

Longfin inshore squid Atlantic Coast in Cephalopods Taxonomy Group



First and last years with recorded surplus production are labeled

Cape Hope squid South Africa in Cephalopods Taxonomy Group



First and last years with recorded surplus production are labeled