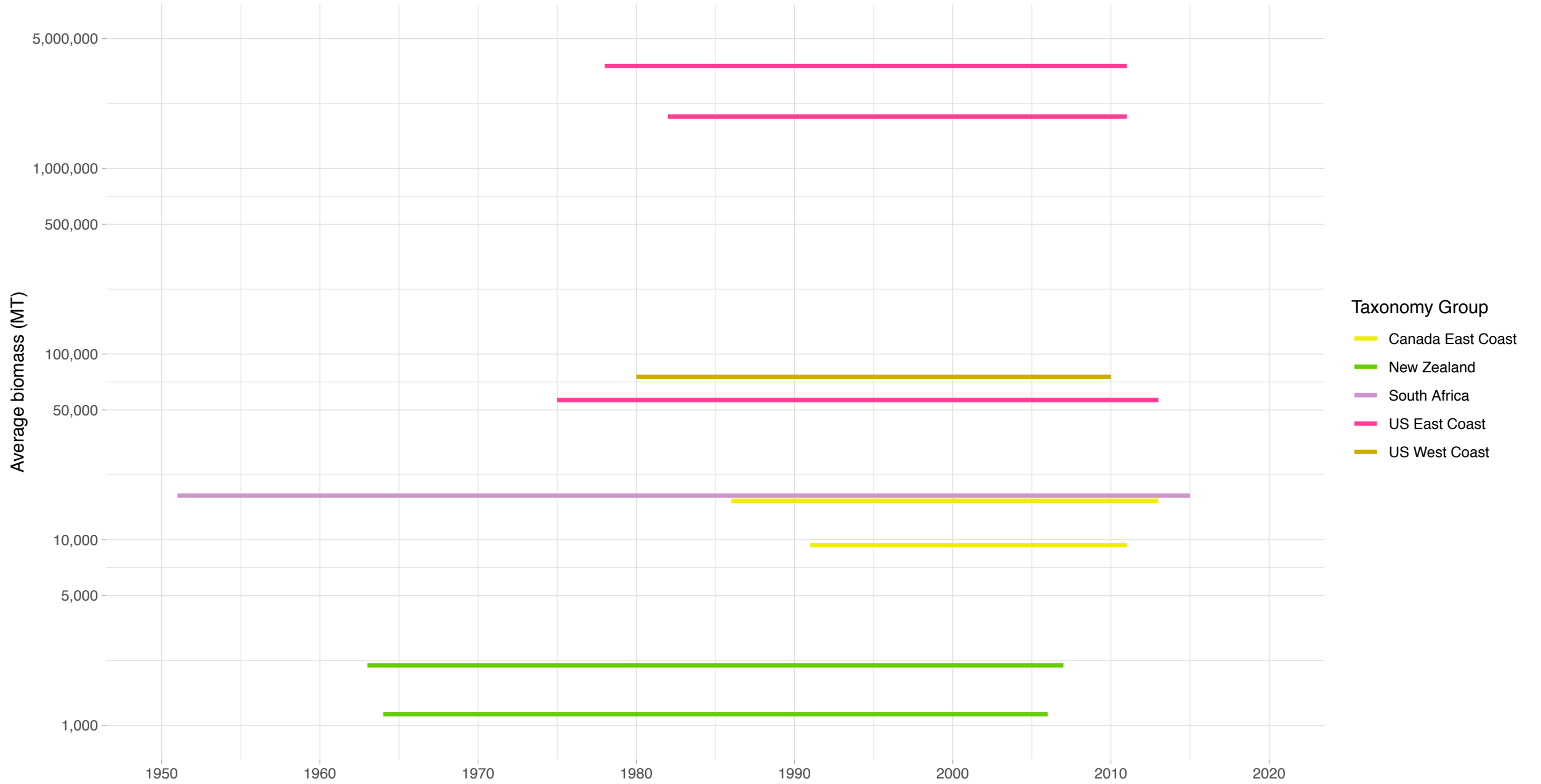
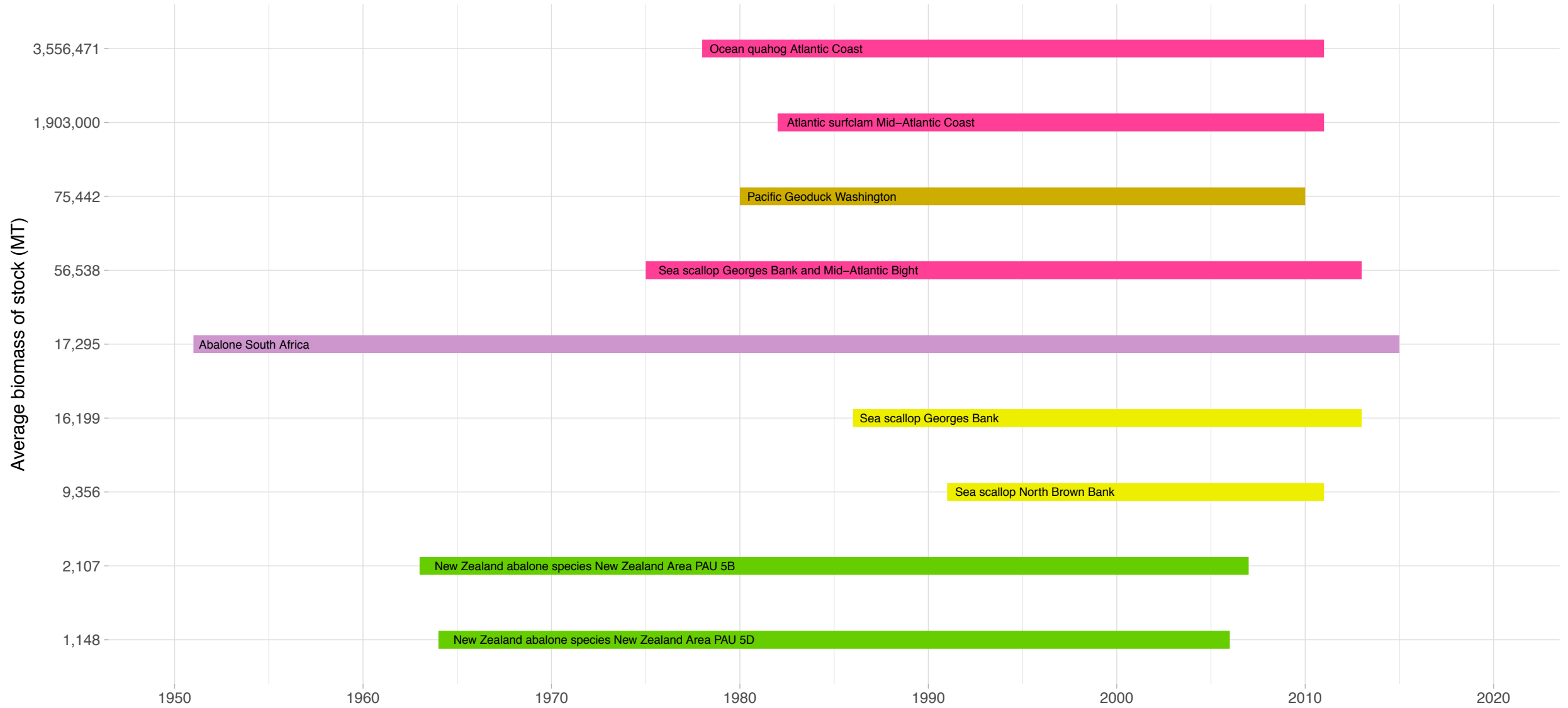


Biomass Coverage in Bivalves–Gastropods Taxonomy Group




Biomass Coverage Over Time in Bivalves–Gastropods Taxonomy Group


Stocks ordered from lowest to highest average biomass

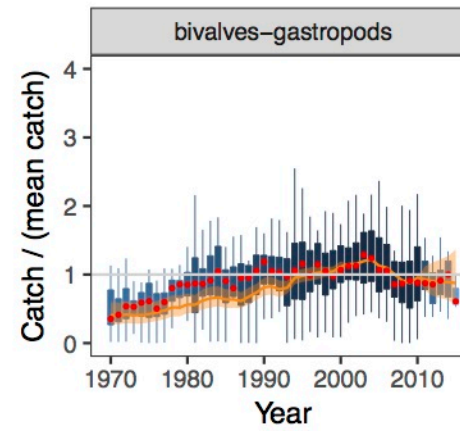
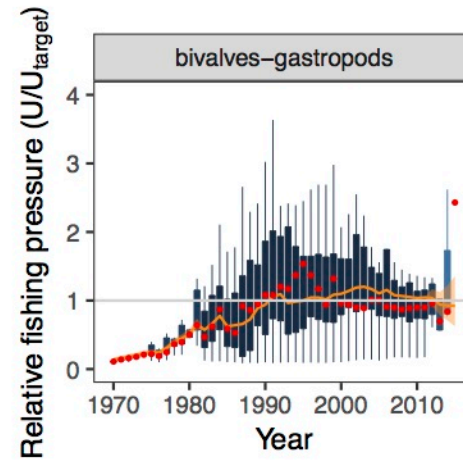
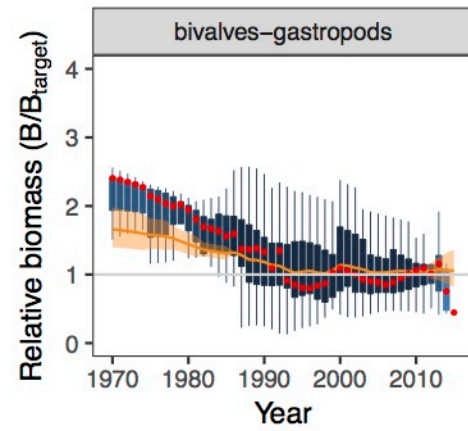


Taxonomy Group ■ Canada East Coast ■ New Zealand ■ South Africa ■ US East Coast ■ US West Coast



Summary method:  Median

 State-space model prediction



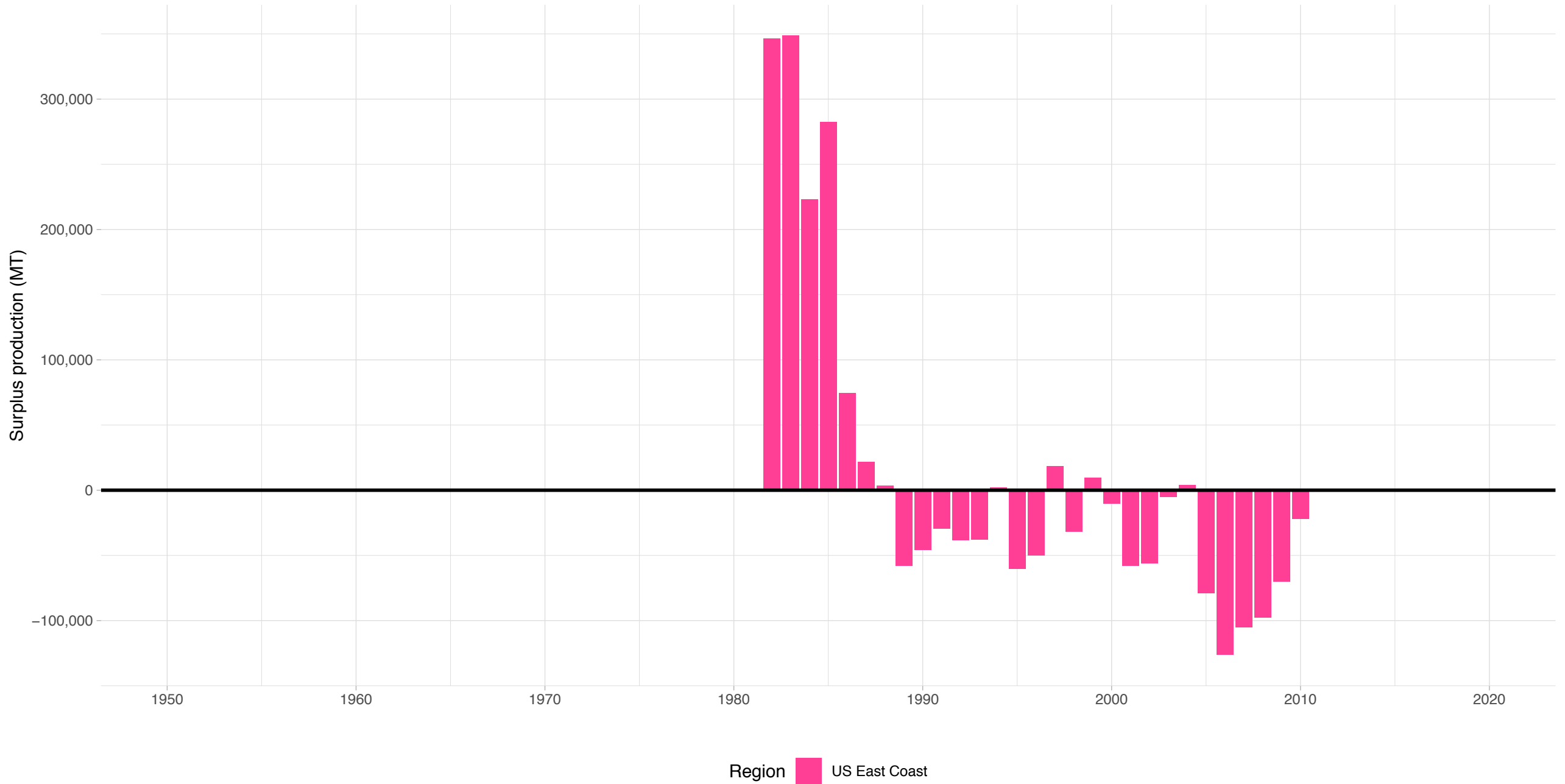
Ocean quahog Atlantic Coast – Bivalves–Gastropods Taxonomy Group

Stock represents 27.2% of average absolute surplus production



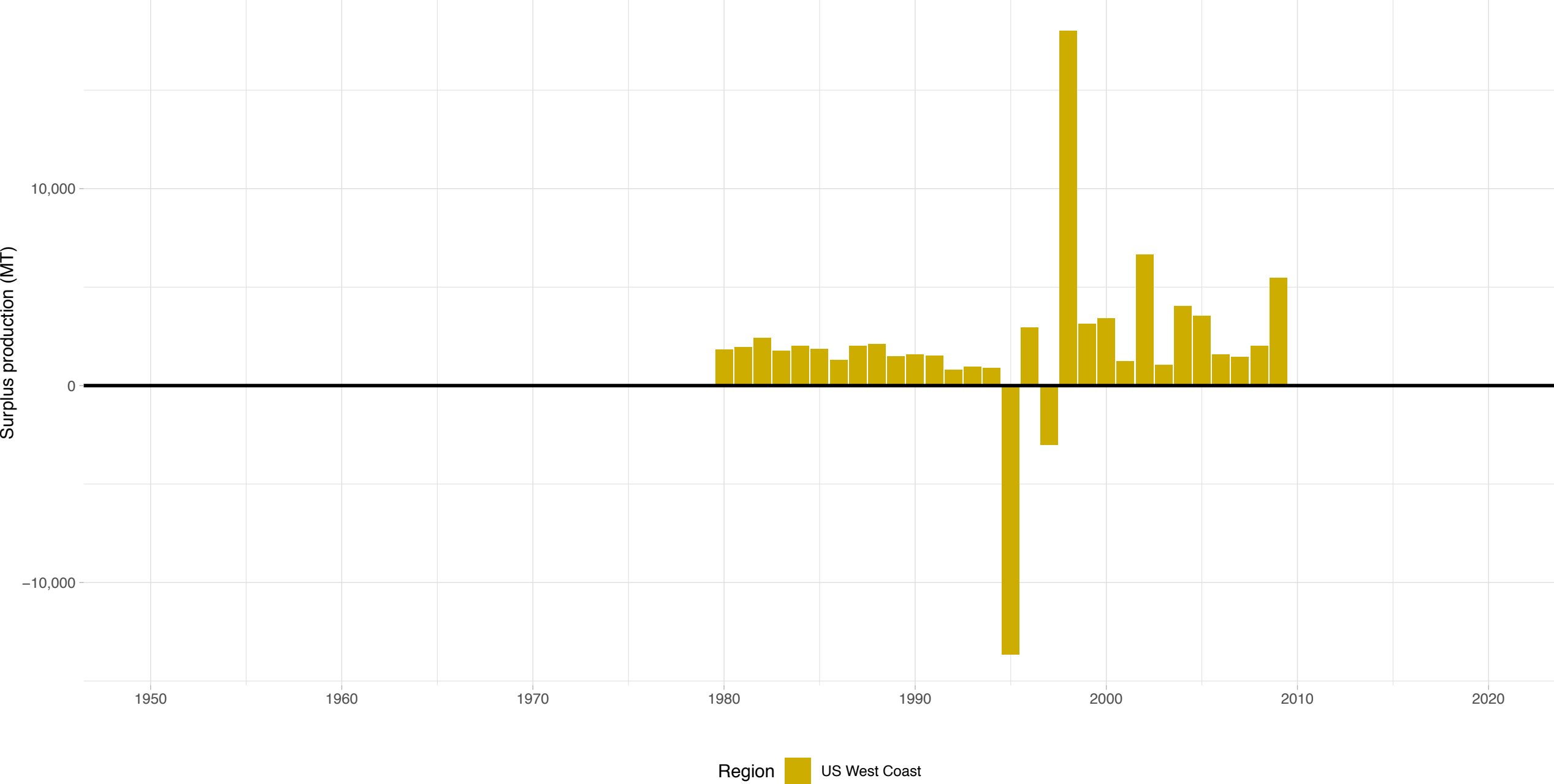
Atlantic surfclam Mid-Atlantic Coast – Bivalves–Gastropods Taxonomy Group

Stock represents 52.6% of average absolute surplus production



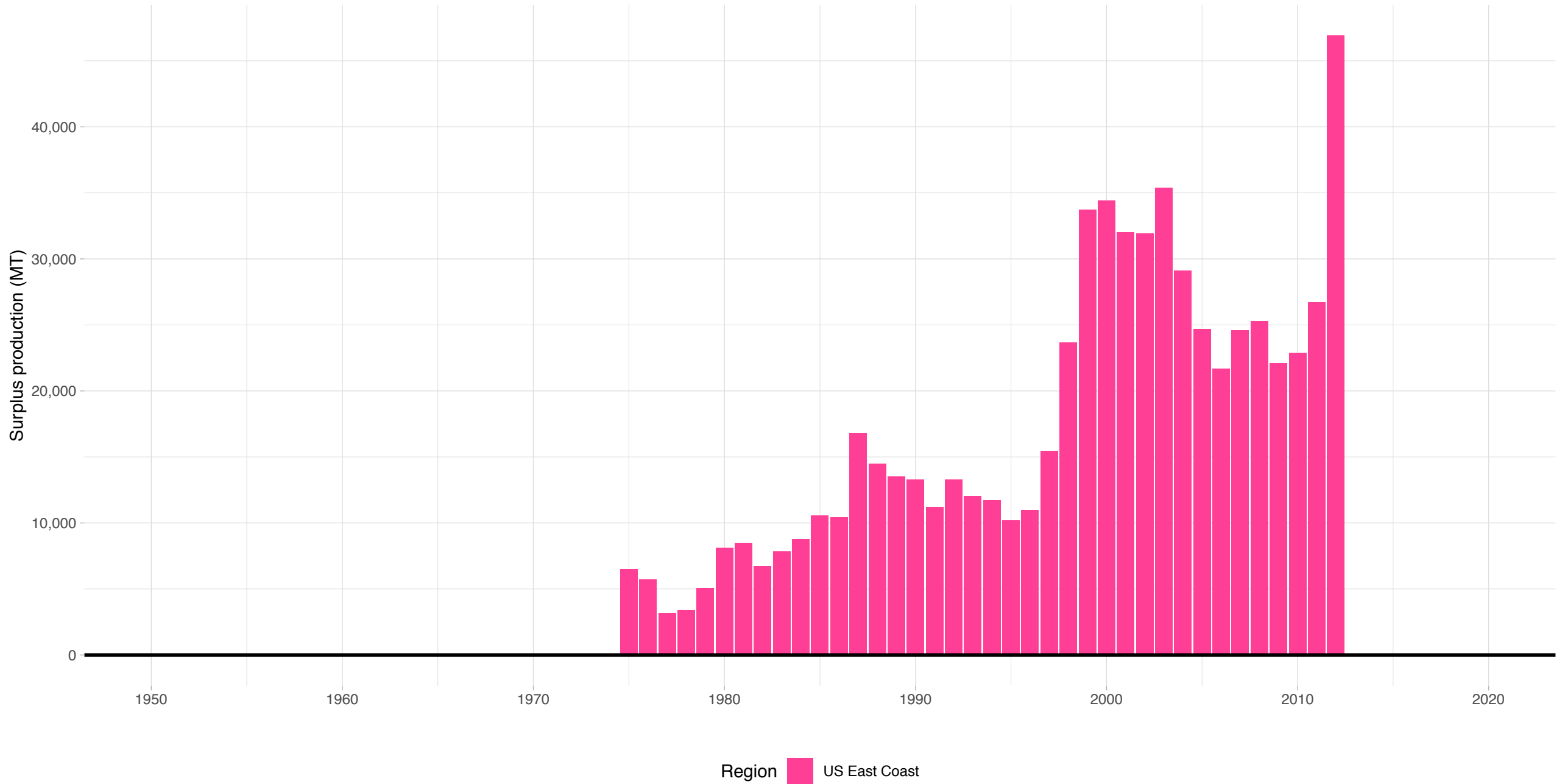
Pacific Geoduck Washington – Bivalves–Gastropods Taxonomy Group

Stock represents 2.10% of average absolute surplus production

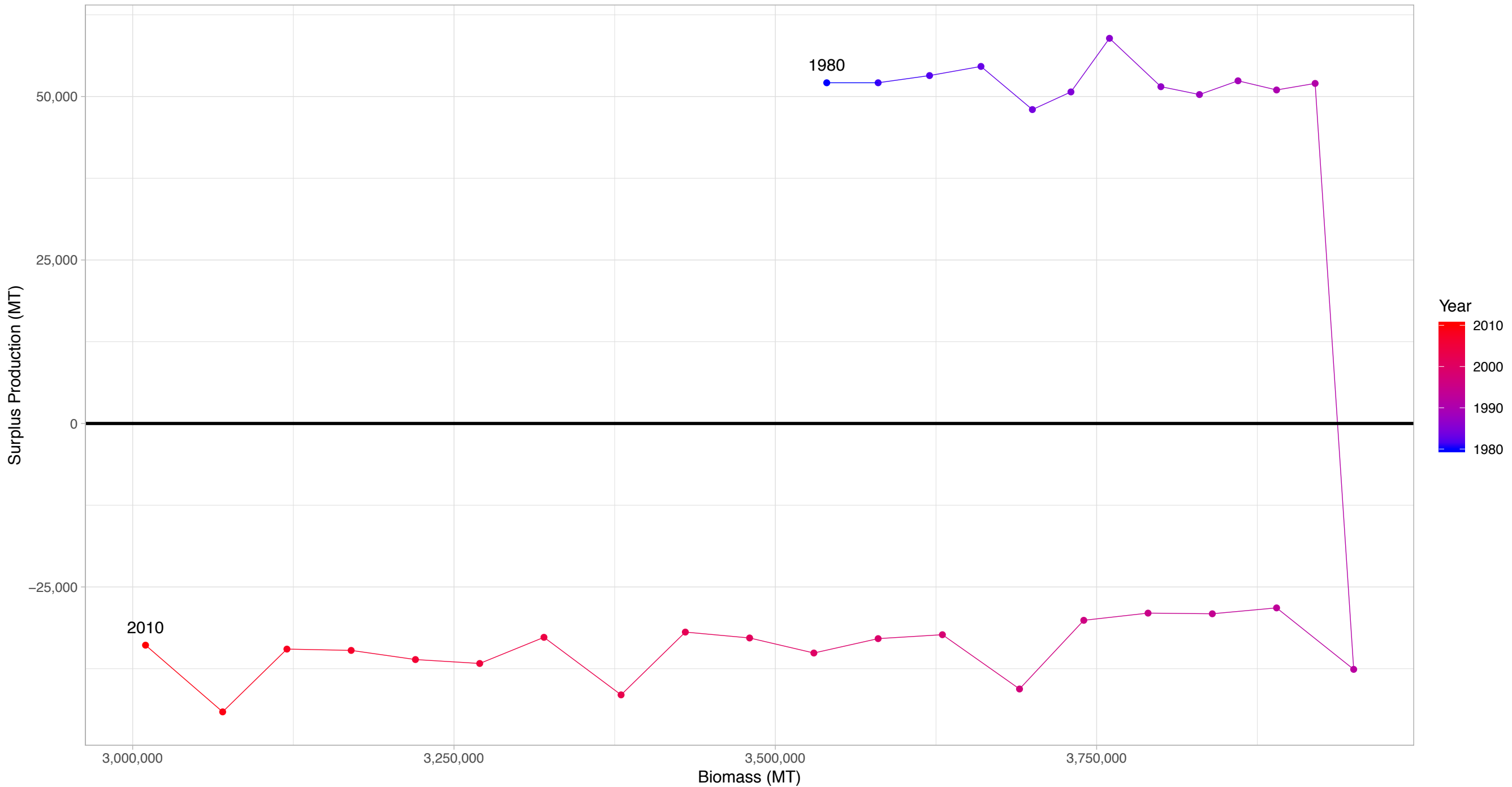


Sea scallop Georges Bank and Mid-Atlantic Bight – Bivalves–Gastropods Taxonomy Group

Stock represents 11.5% of average absolute surplus production

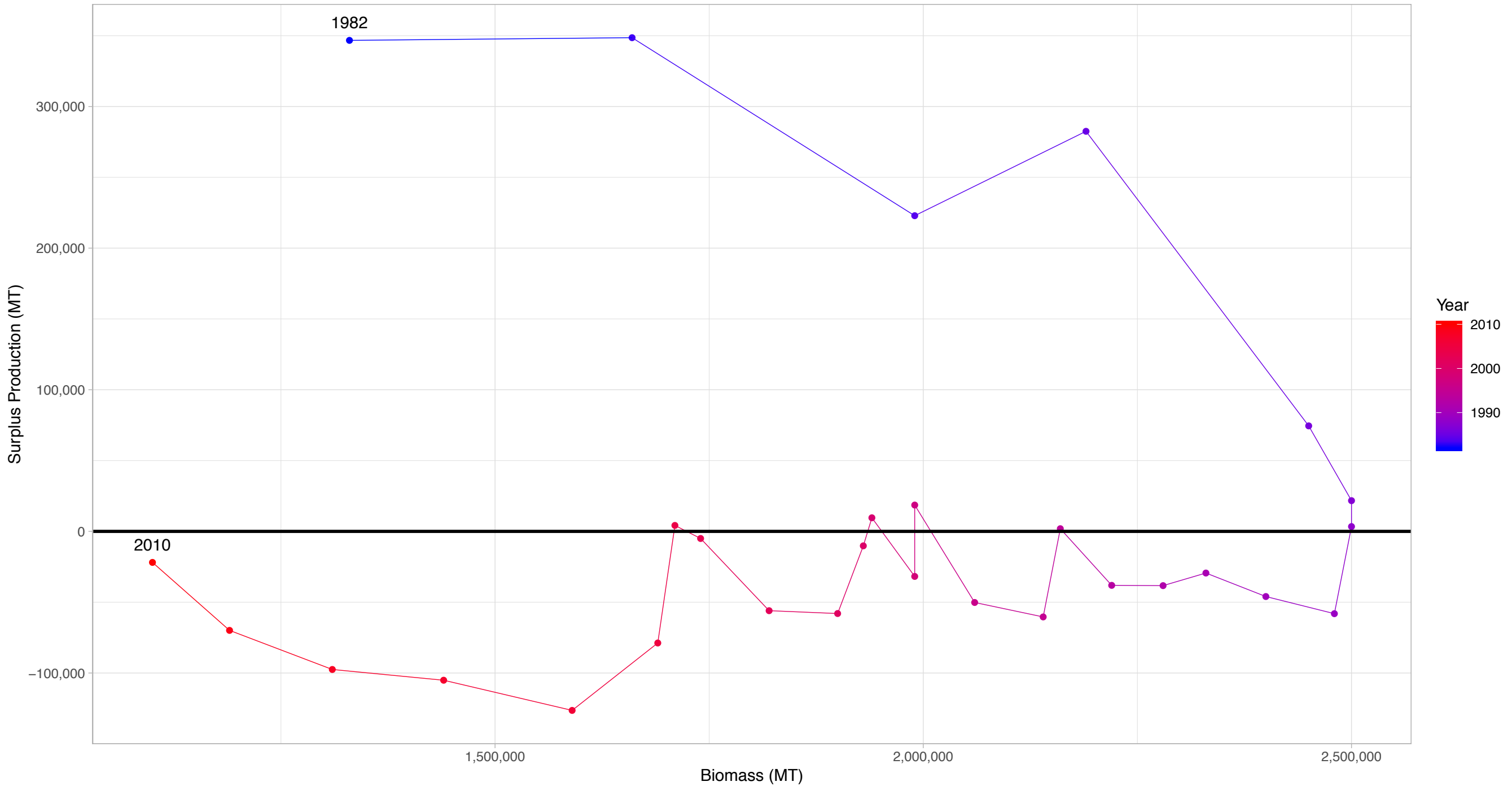


Ocean quahog Atlantic Coast in Bivalves–Gastropods Taxonomy Group



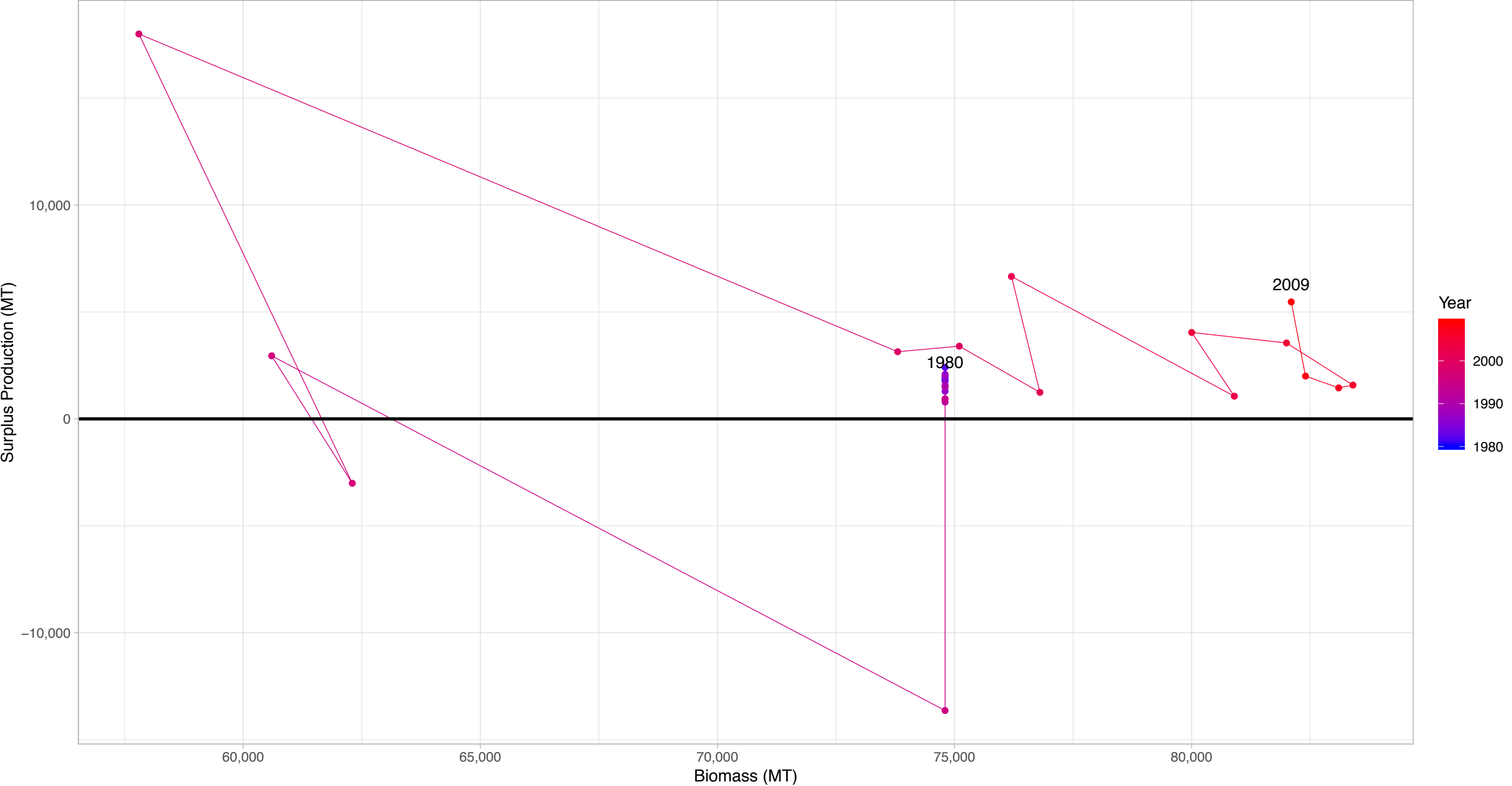
First and last years with recorded surplus production are labeled

Atlantic surfclam Mid-Atlantic Coast in Bivalves-Gastropods Taxonomy Group



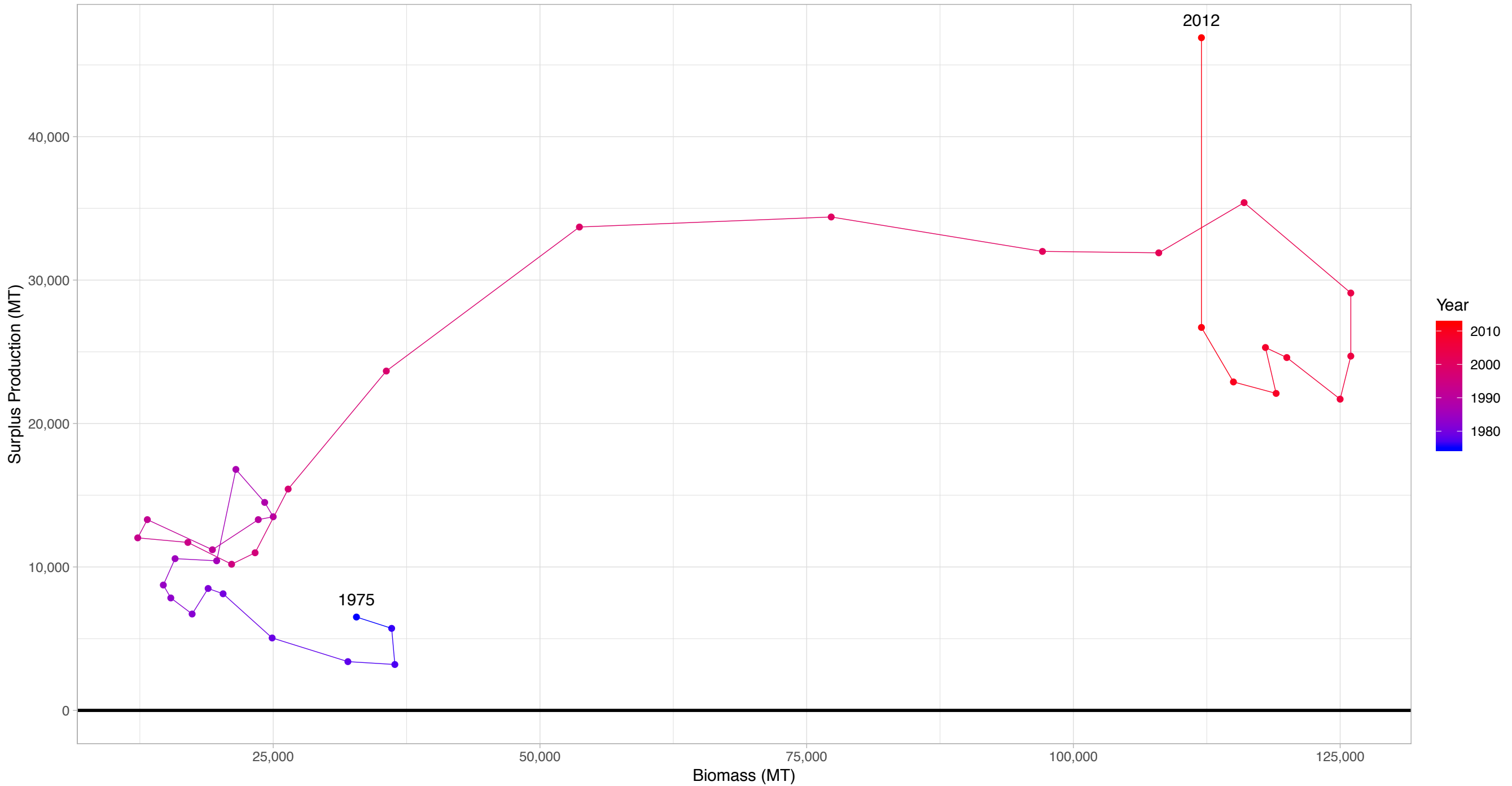
First and last years with recorded surplus production are labeled

Pacific Geoduck Washington in Bivalves–Gastropods Taxonomy Group



First and last years with recorded surplus production are labeled

Sea scallop Georges Bank and Mid-Atlantic Bight in Bivalves-Gastropods Taxonomy Group



First and last years with recorded surplus production are labeled