

Biomass Coverage in US West Coast Region



Biomass Coverage Over Time in US West Coast Region

Stocks with highest average biomass




Biomass Coverage Over Time in US West Coast Region


Stocks with lowest average biomass

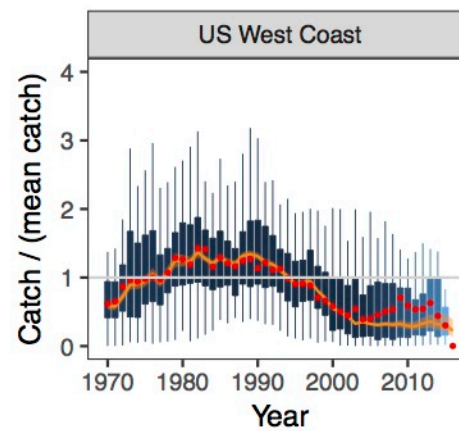
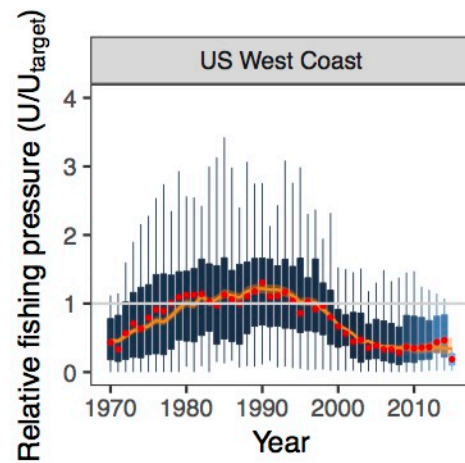
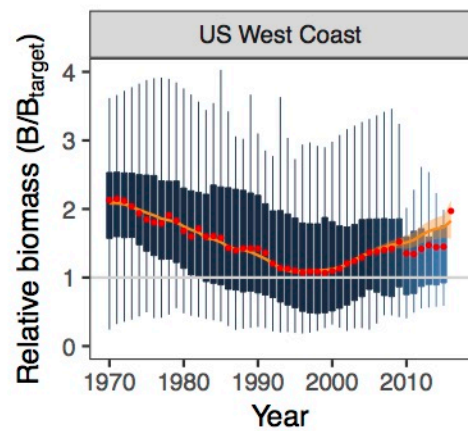


Region ■ pleuronectids ■ sebastids ■ other scorpaenids

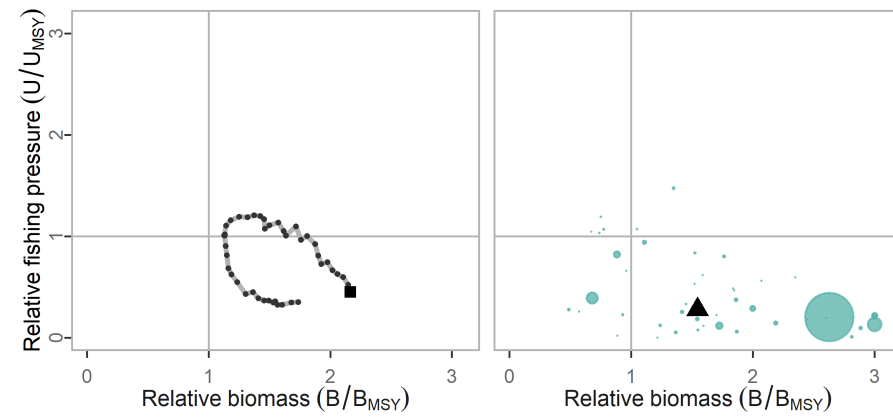


Summary method:  Median

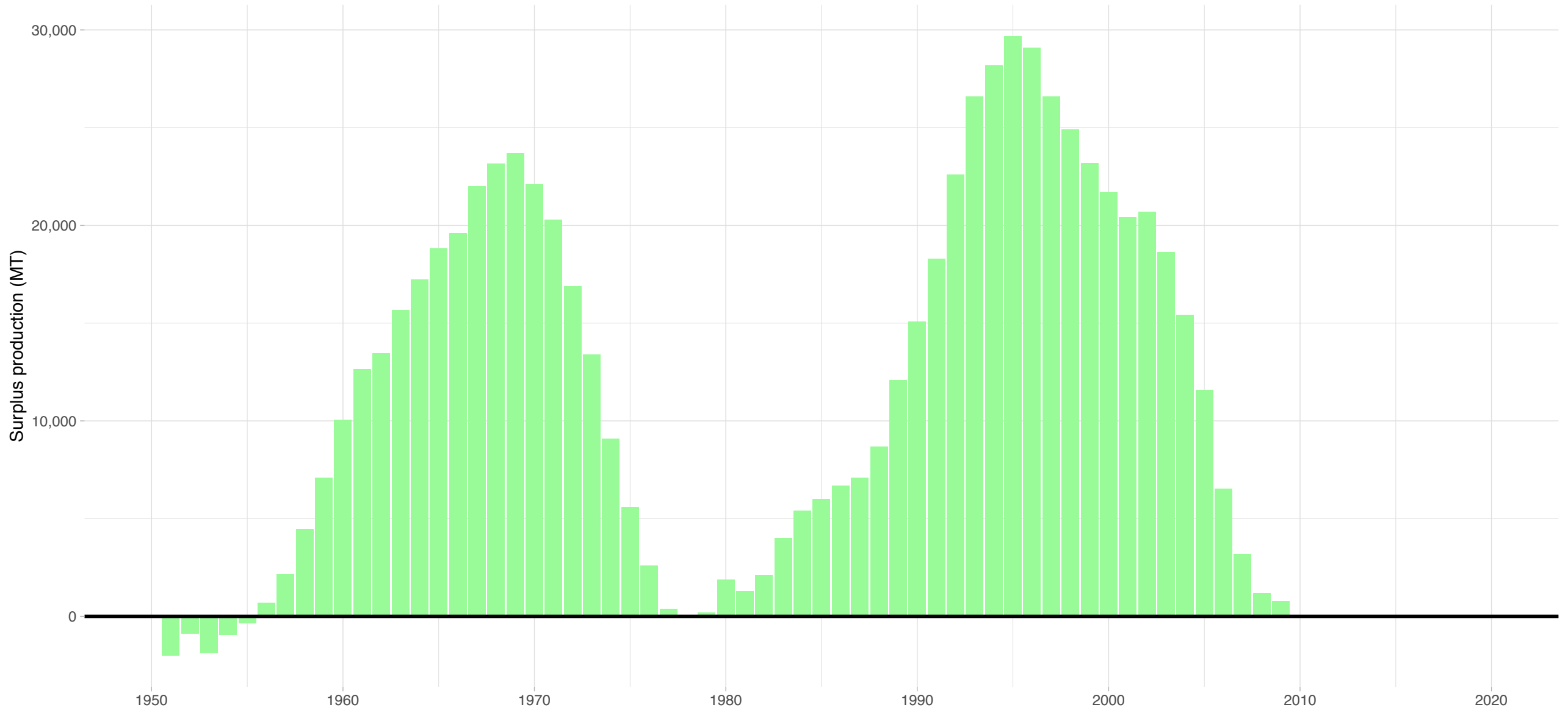
 State-space model prediction



US West Coast

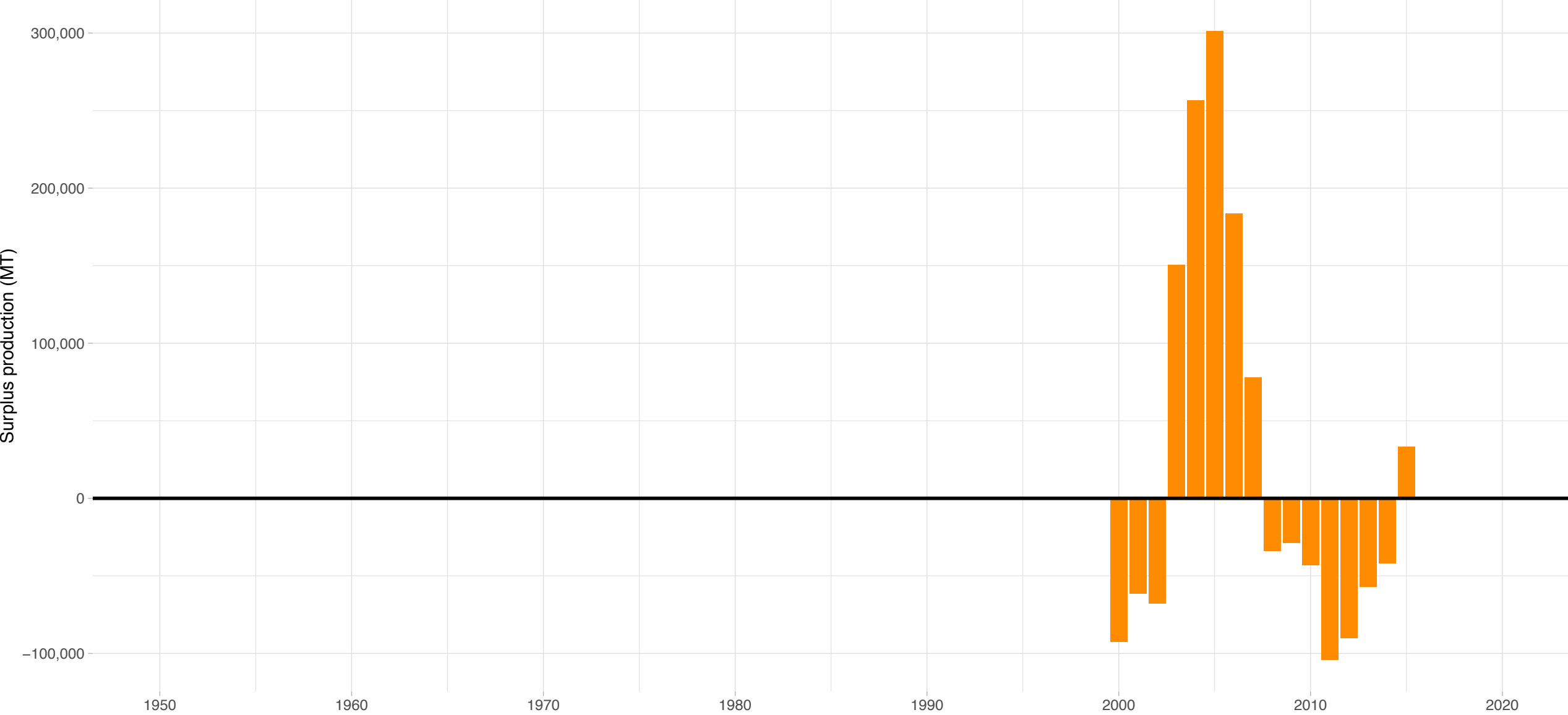


Dover sole Pacific Coast – US West Coast Region
Stock represents 3.72% of average absolute surplus production



Taxonomy Group ■ pleuronectids

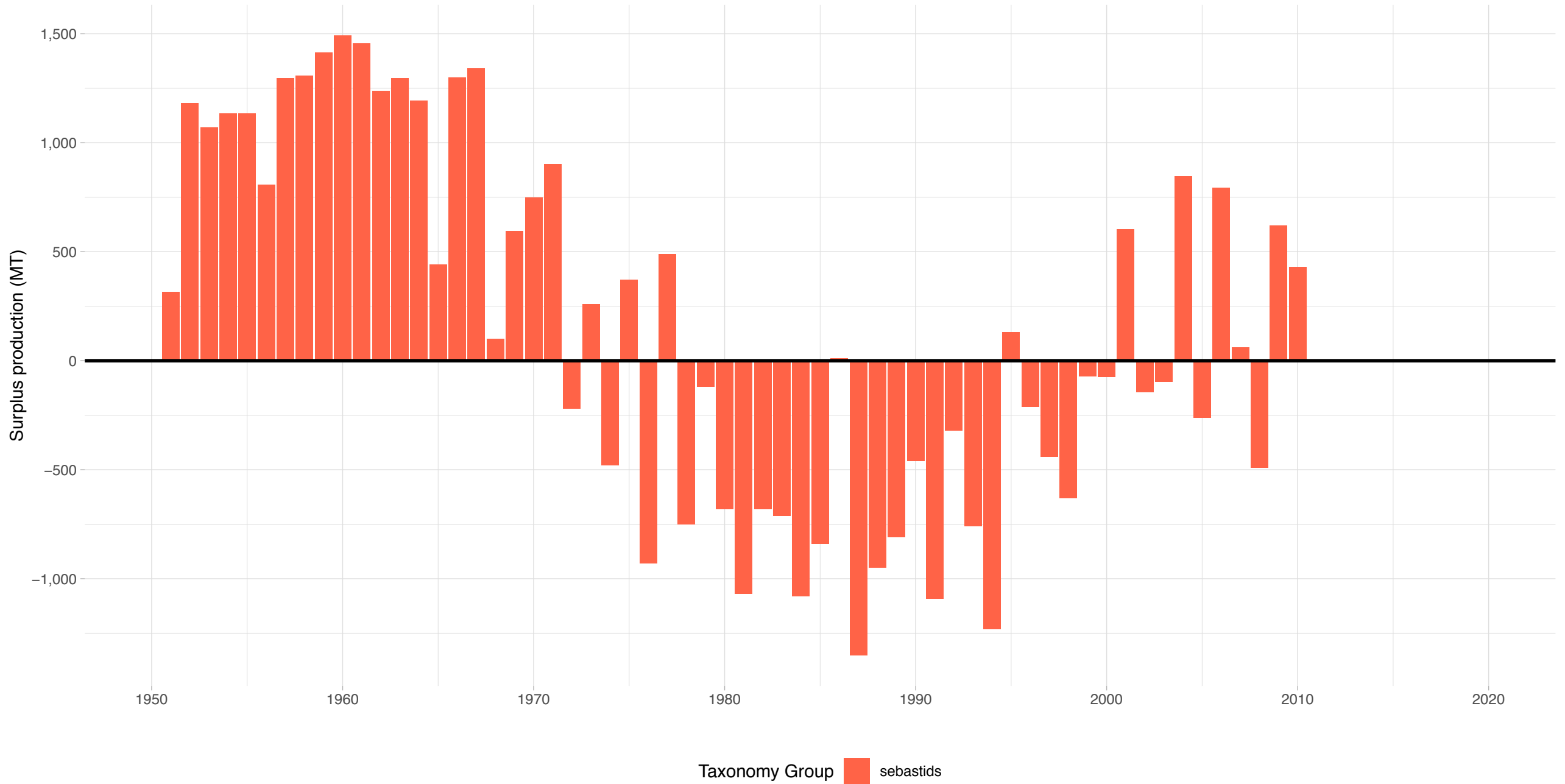
Pacific sardine Pacific Coast – US West Coast Region
Stock represents 51.8% of average absolute surplus production



Taxonomy Group ■ forage fish

Shortspine thornyhead Pacific Coast – US West Coast Region

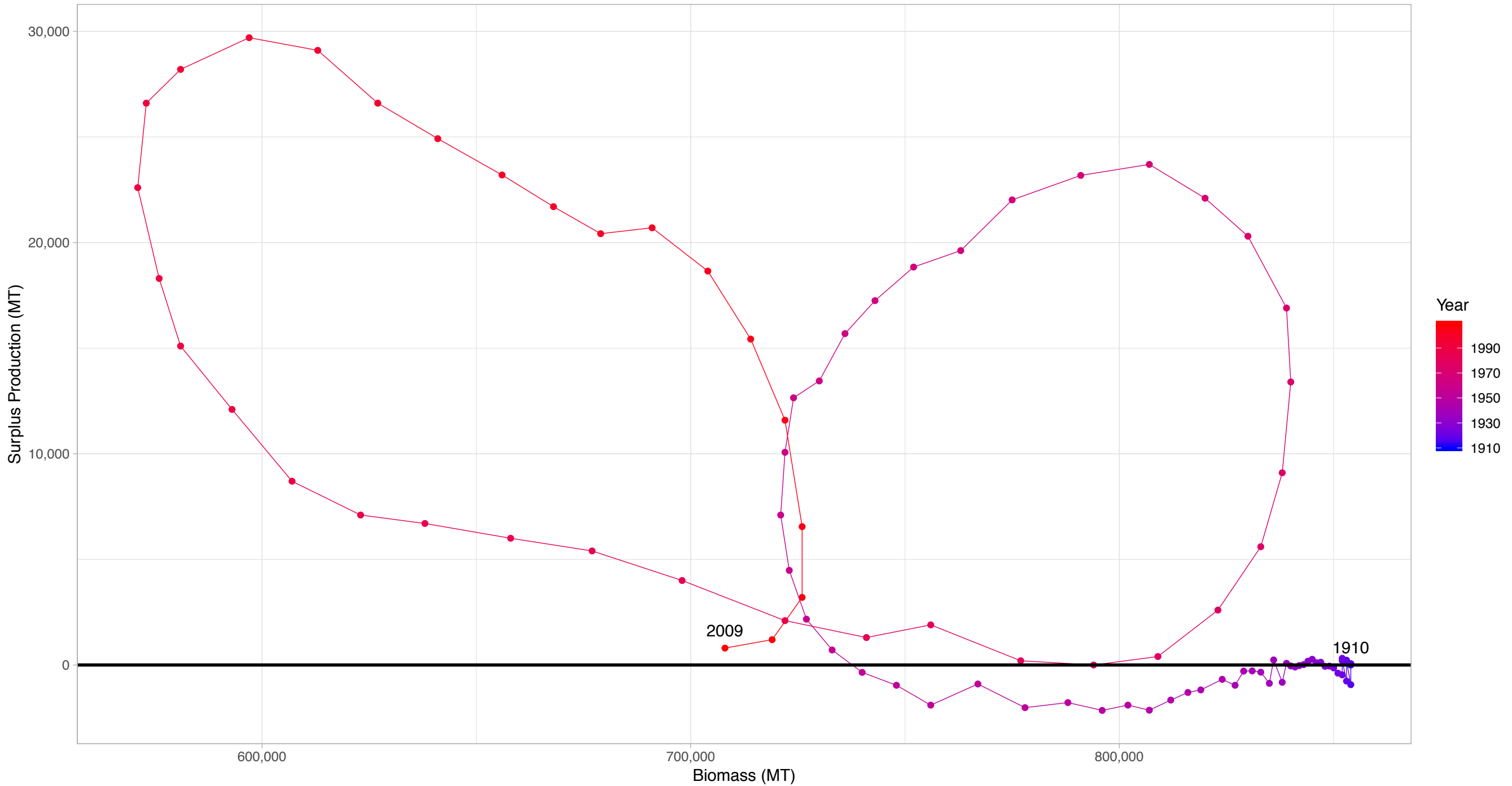
Stock represents 0.232% of average absolute surplus production



Sablefish Pacific Coast – US West Coast Region
Stock represents 2.78% of average absolute surplus production

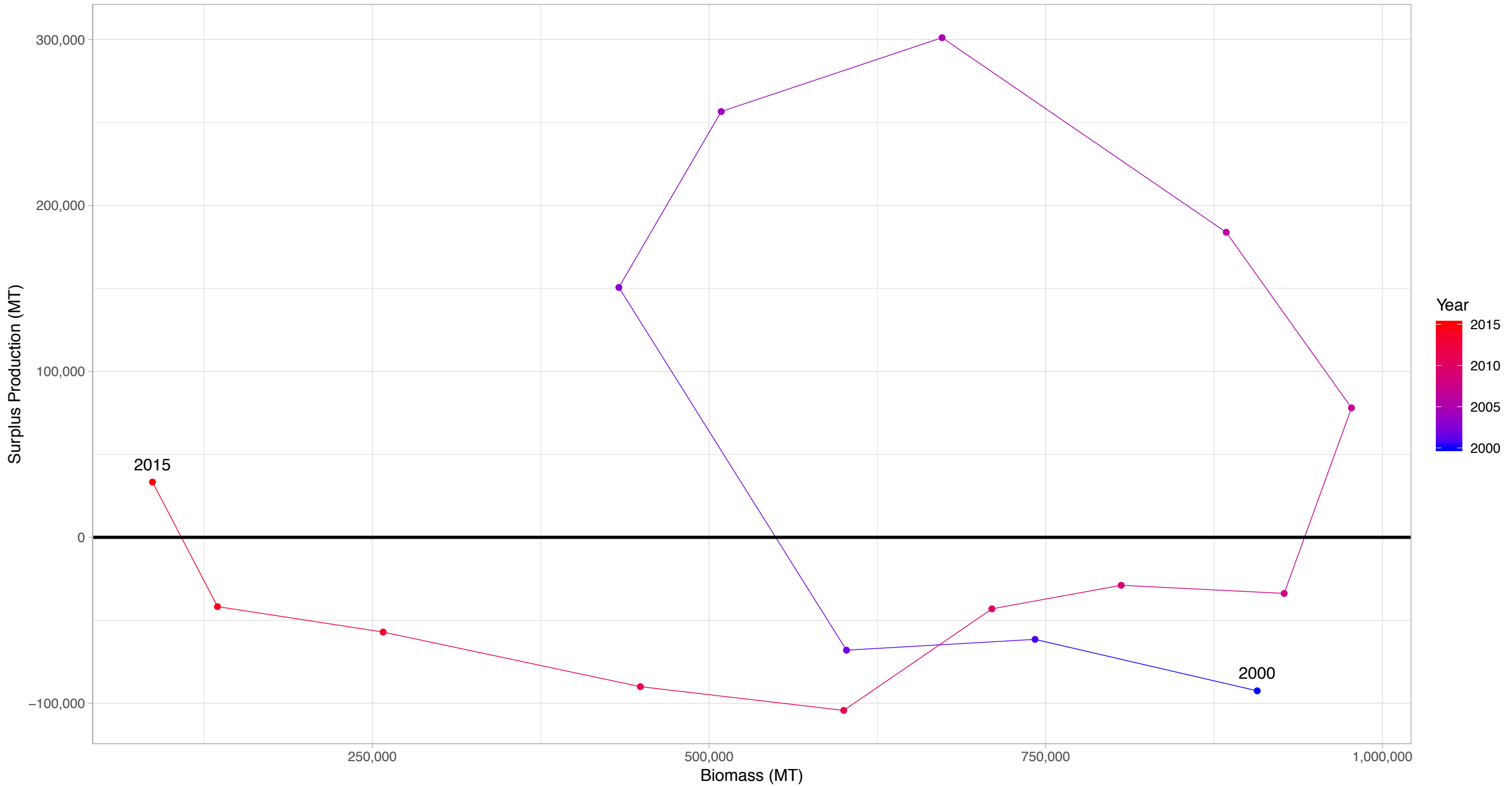


Dover sole Pacific Coast in US West Coast Region



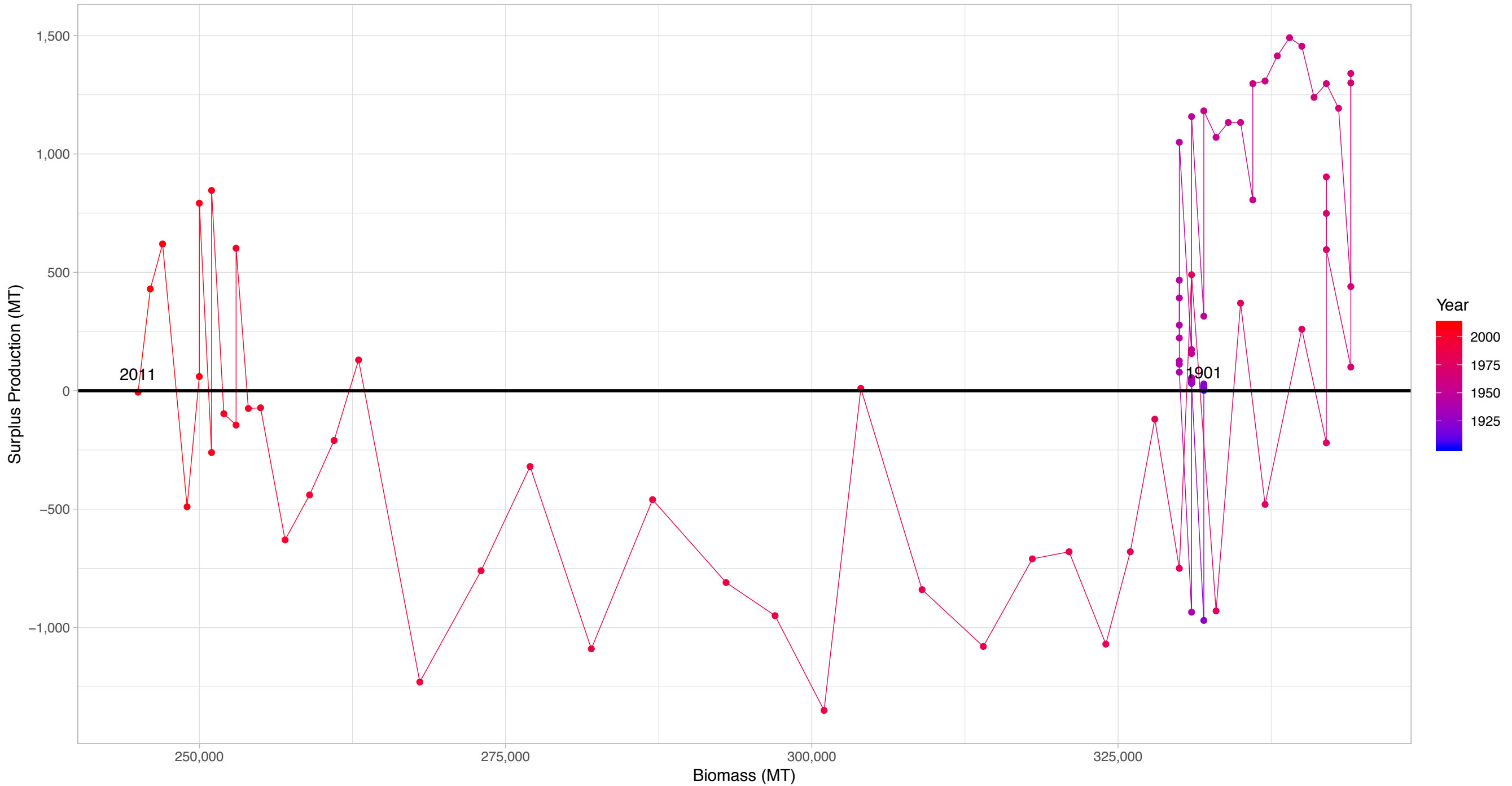
First and last years with recorded surplus production are labeled

Pacific sardine Pacific Coast in US West Coast Region



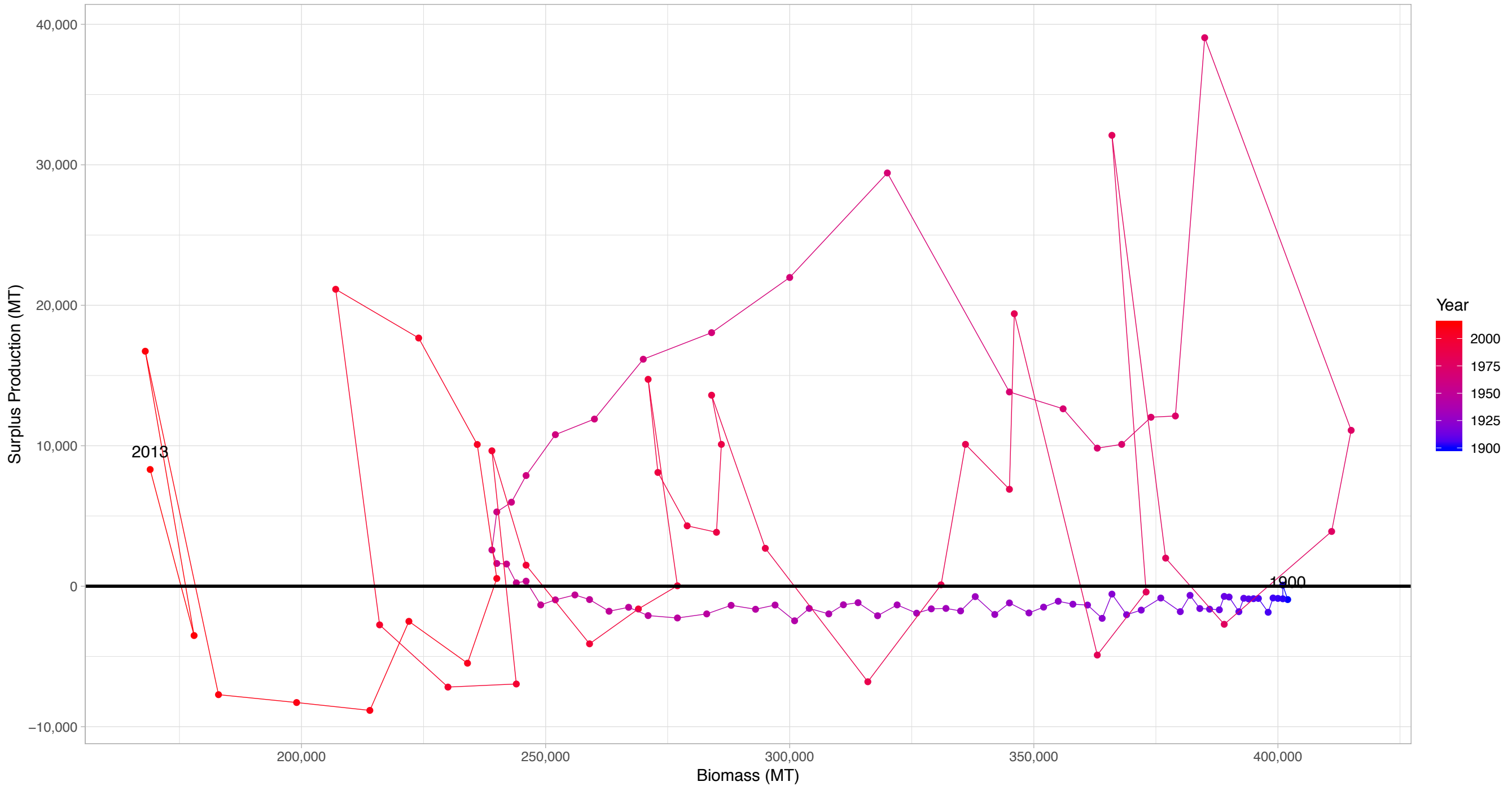
First and last years with recorded surplus production are labeled

Shortspine thornyhead Pacific Coast in US West Coast Region



First and last years with recorded surplus production are labeled

Sablefish Pacific Coast in US West Coast Region



First and last years with recorded surplus production are labeled