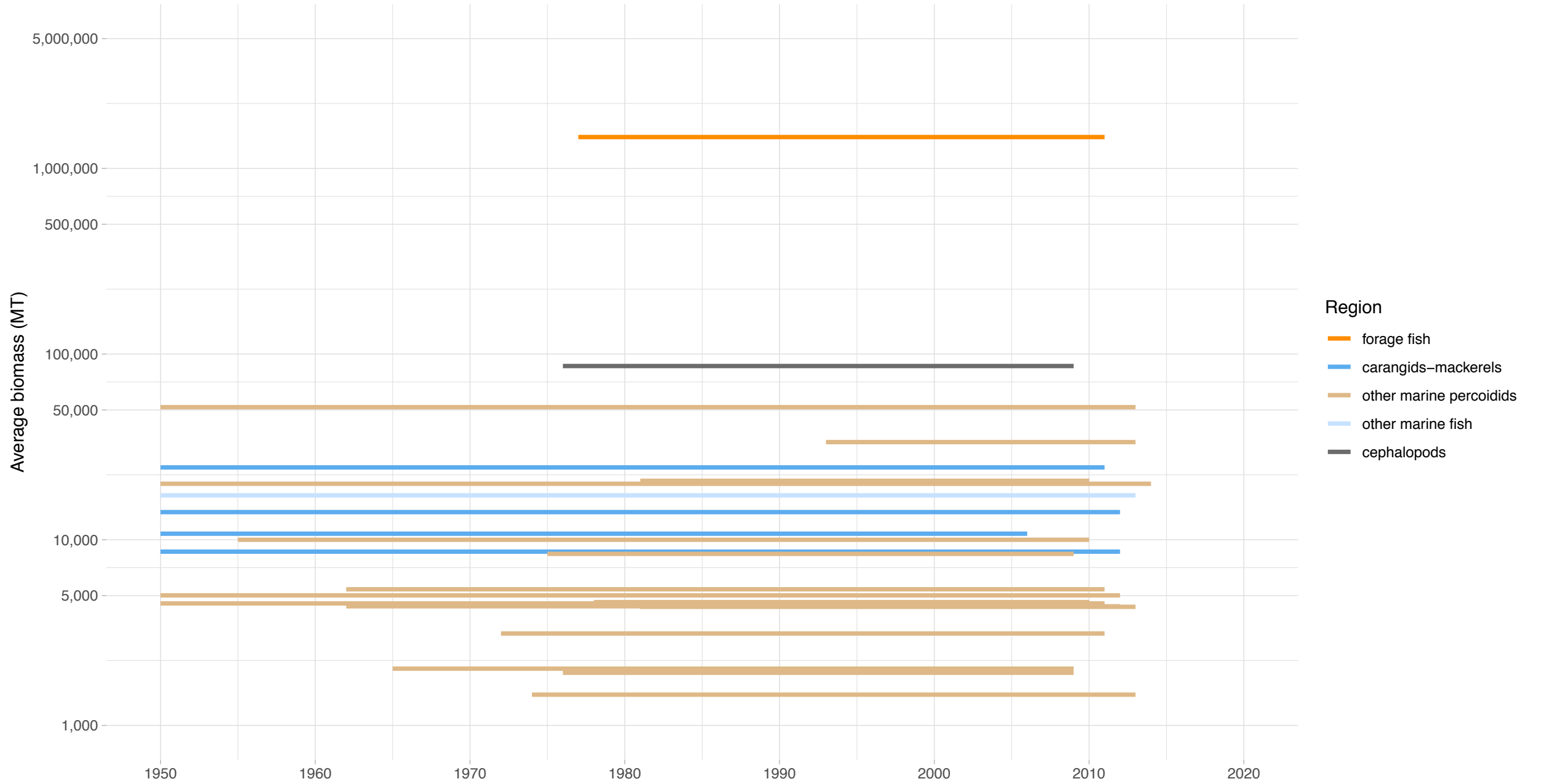
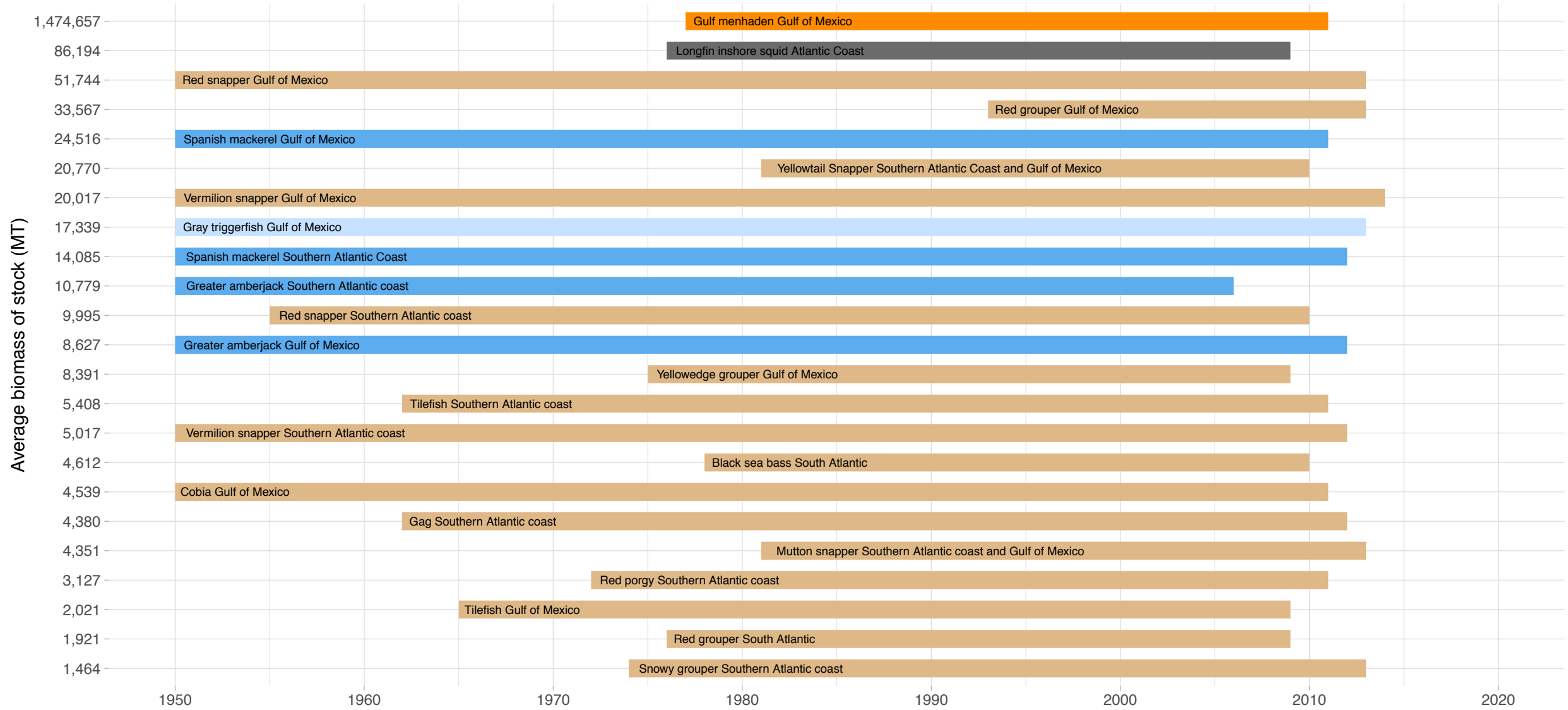


Biomass Coverage in US Southeast and Gulf Region




Biomass Coverage Over Time in US Southeast and Gulf Region


Stocks ordered from lowest to highest average biomass

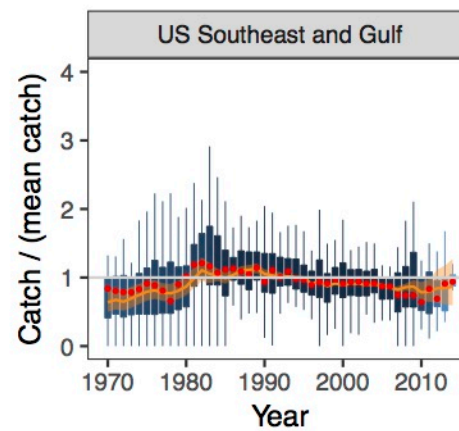
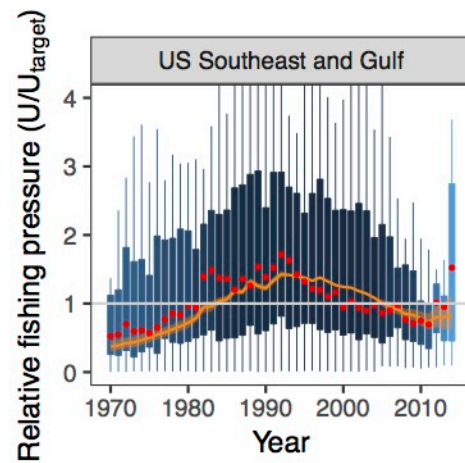
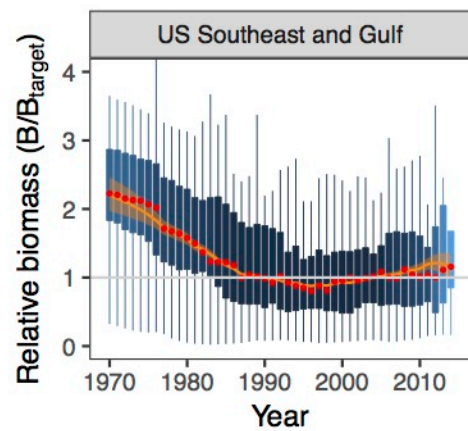


Region ■ forage fish ■ carangids-mackerels ■ other marine percoidids ■ other marine fish ■ cephalopods

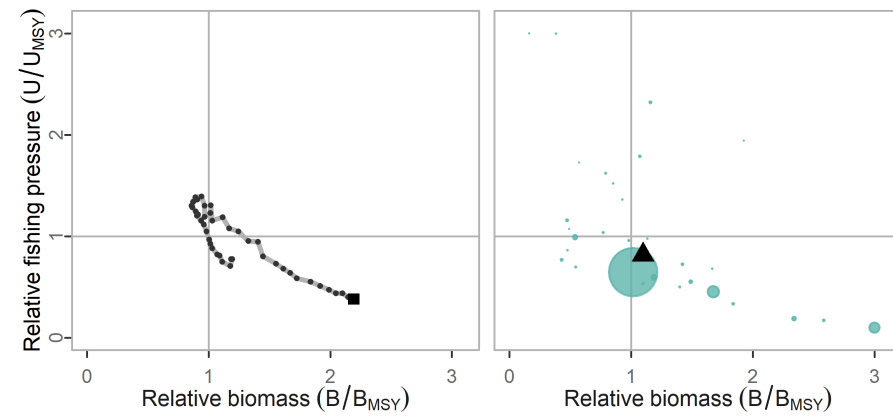


Summary method:  Median

 State-space model prediction

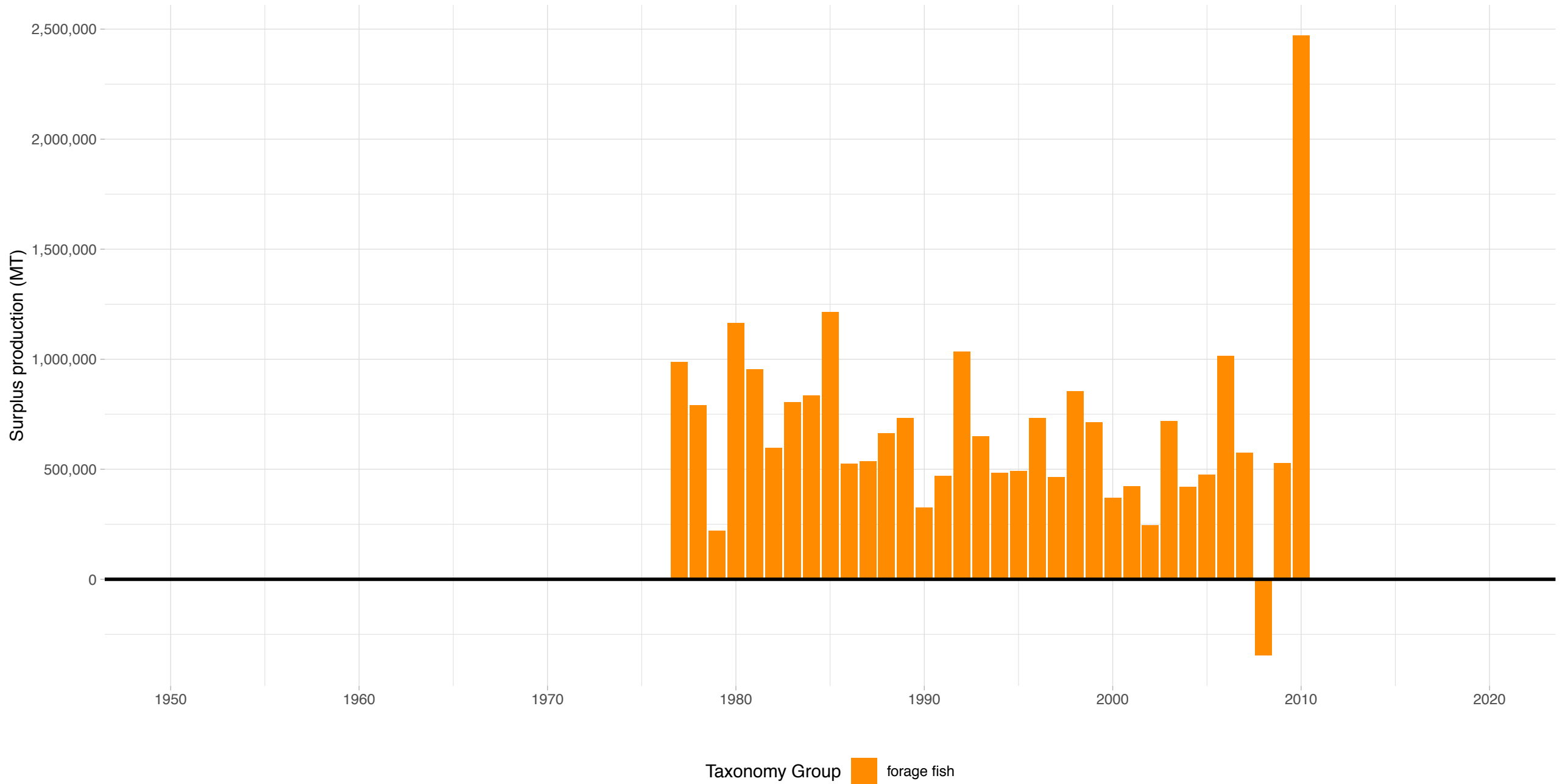


US Southeast and Gulf



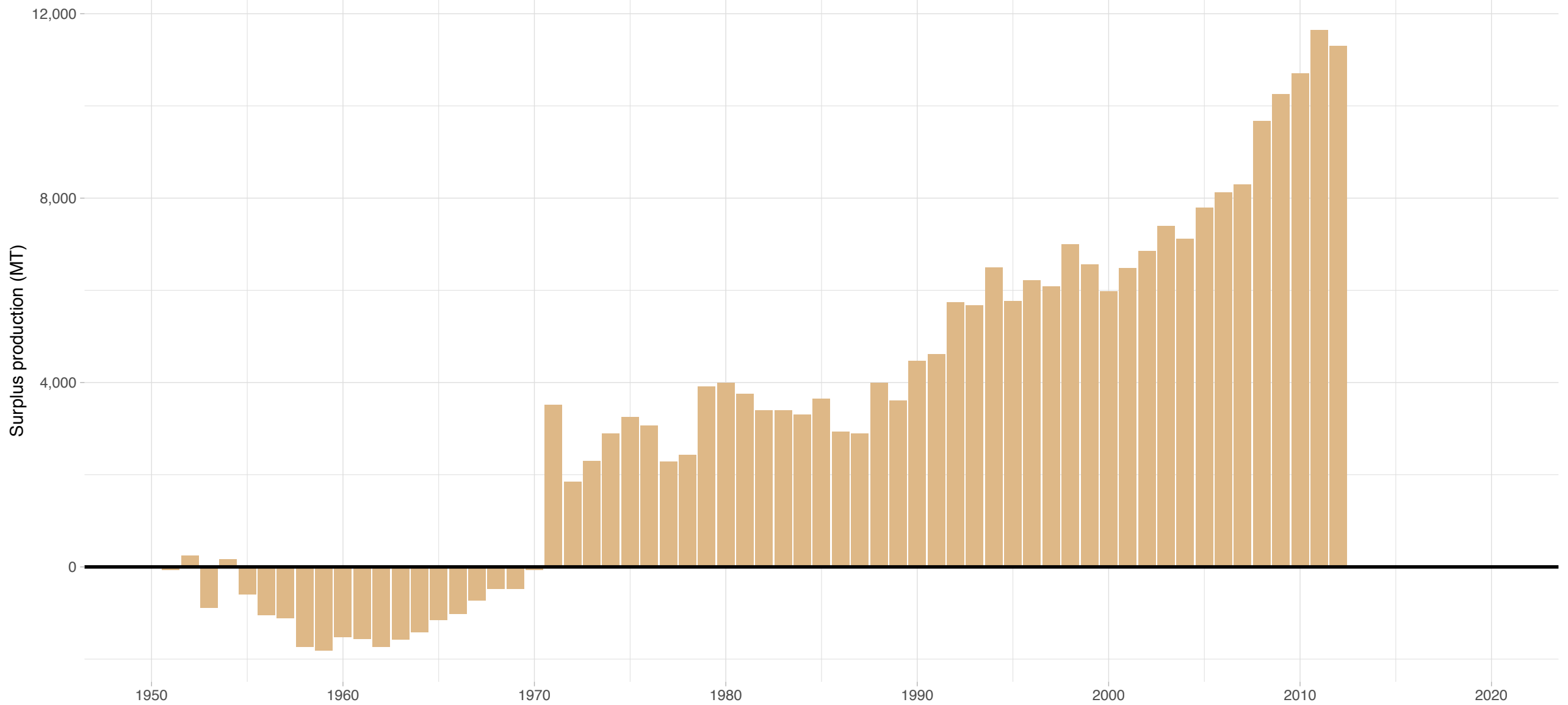
Gulf menhaden Gulf of Mexico – US Southeast and Gulf Region

Stock represents 91.1% of average absolute surplus production



Red snapper Gulf of Mexico – US Southeast and Gulf Region

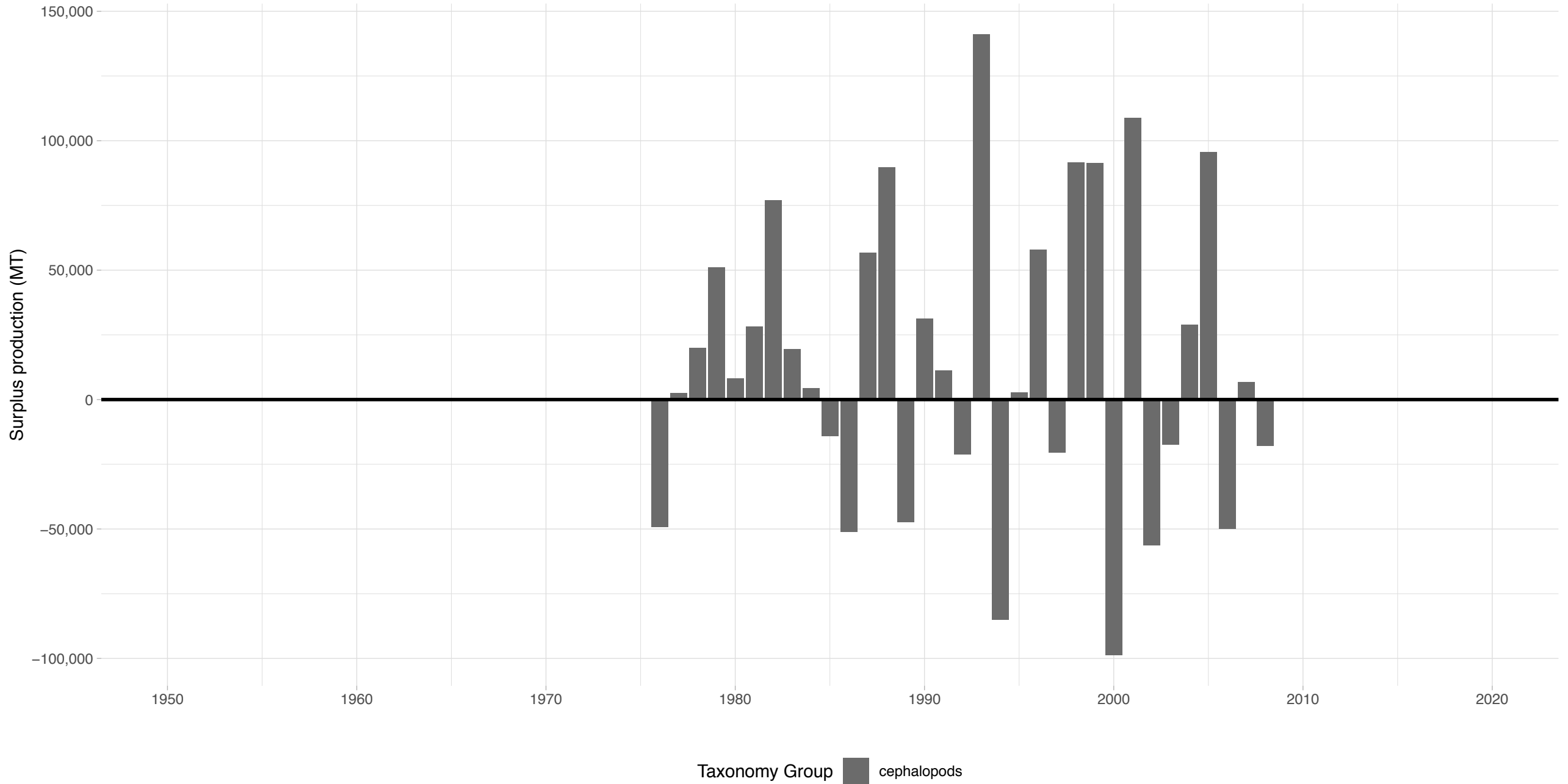
Stock represents 0.309% of average absolute surplus production



Taxonomy Group other marine percoidids

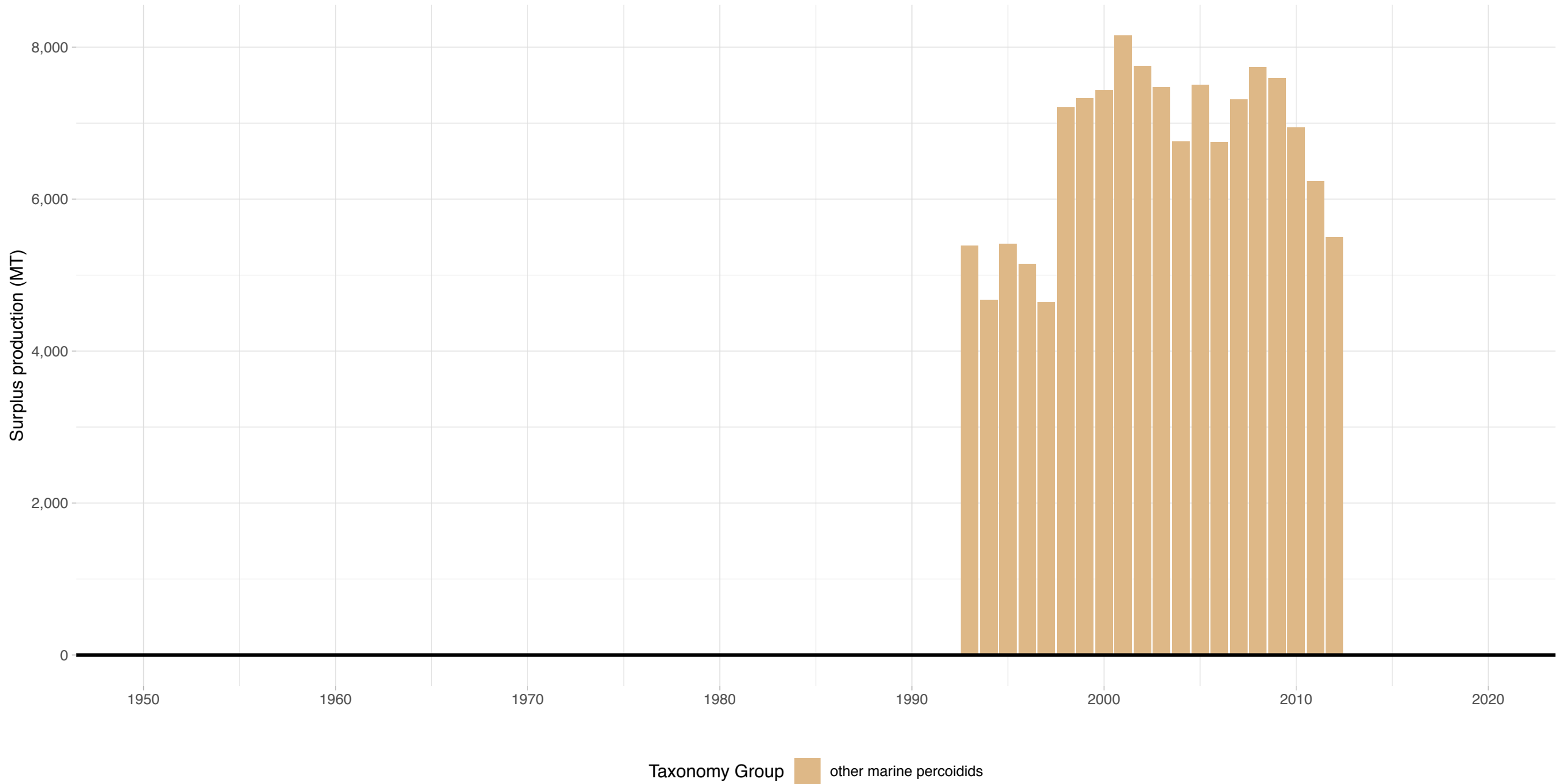
Longfin inshore squid Atlantic Coast – US Southeast and Gulf Region

Stock represents 6.12% of average absolute surplus production

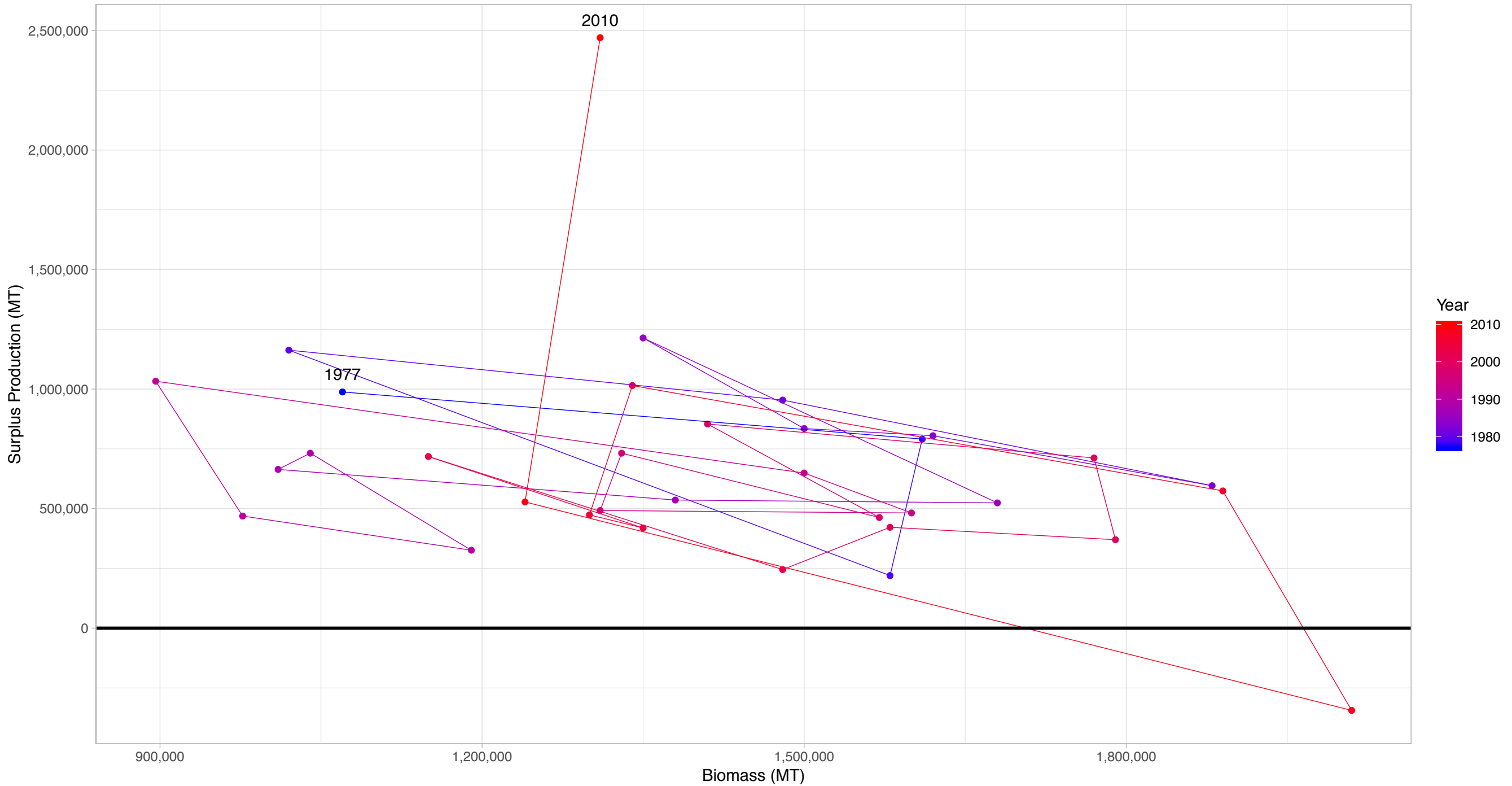


Red grouper Gulf of Mexico – US Southeast and Gulf Region

Stock represents 0.865% of average absolute surplus production

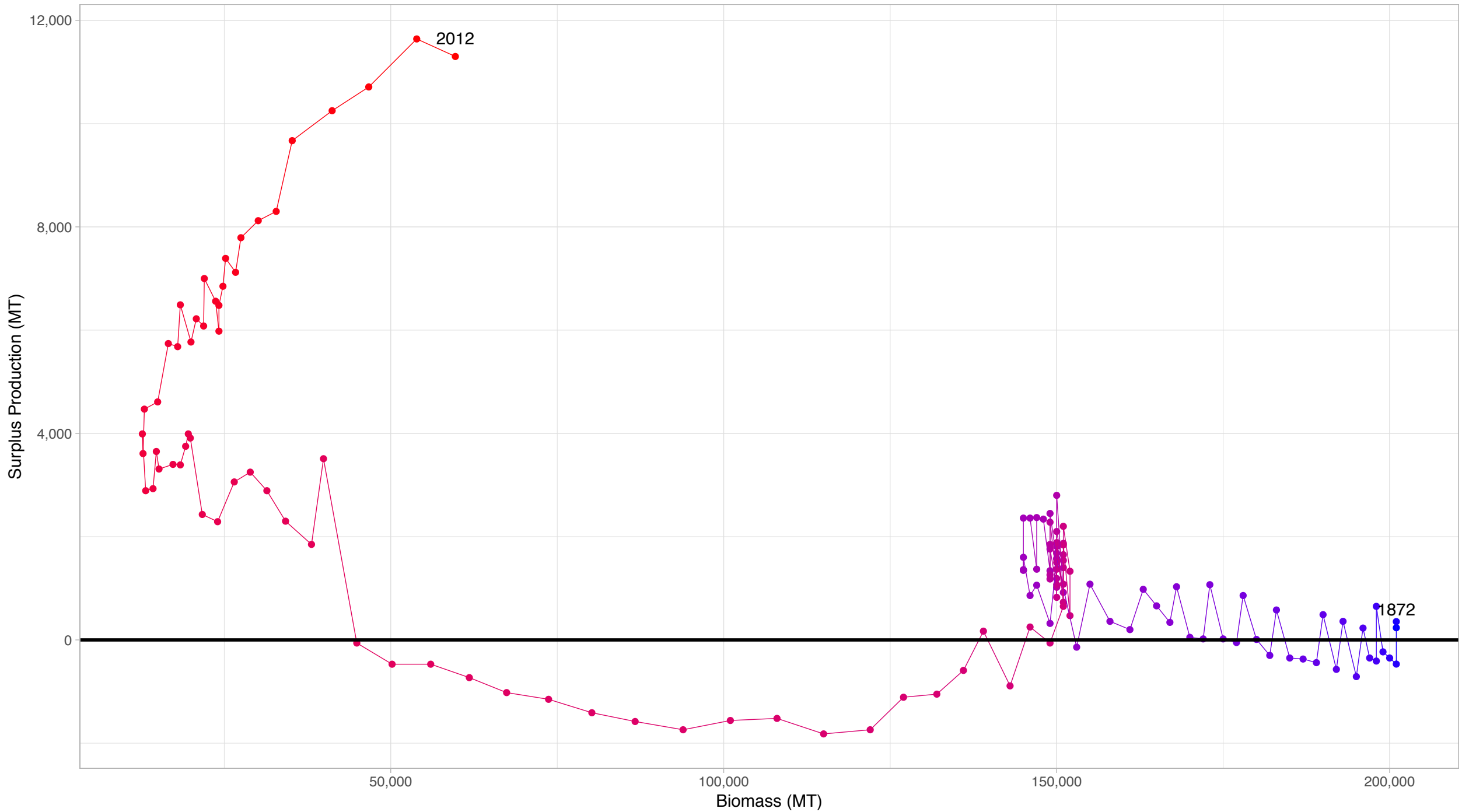


Gulf menhaden Gulf of Mexico in US Southeast and Gulf Region



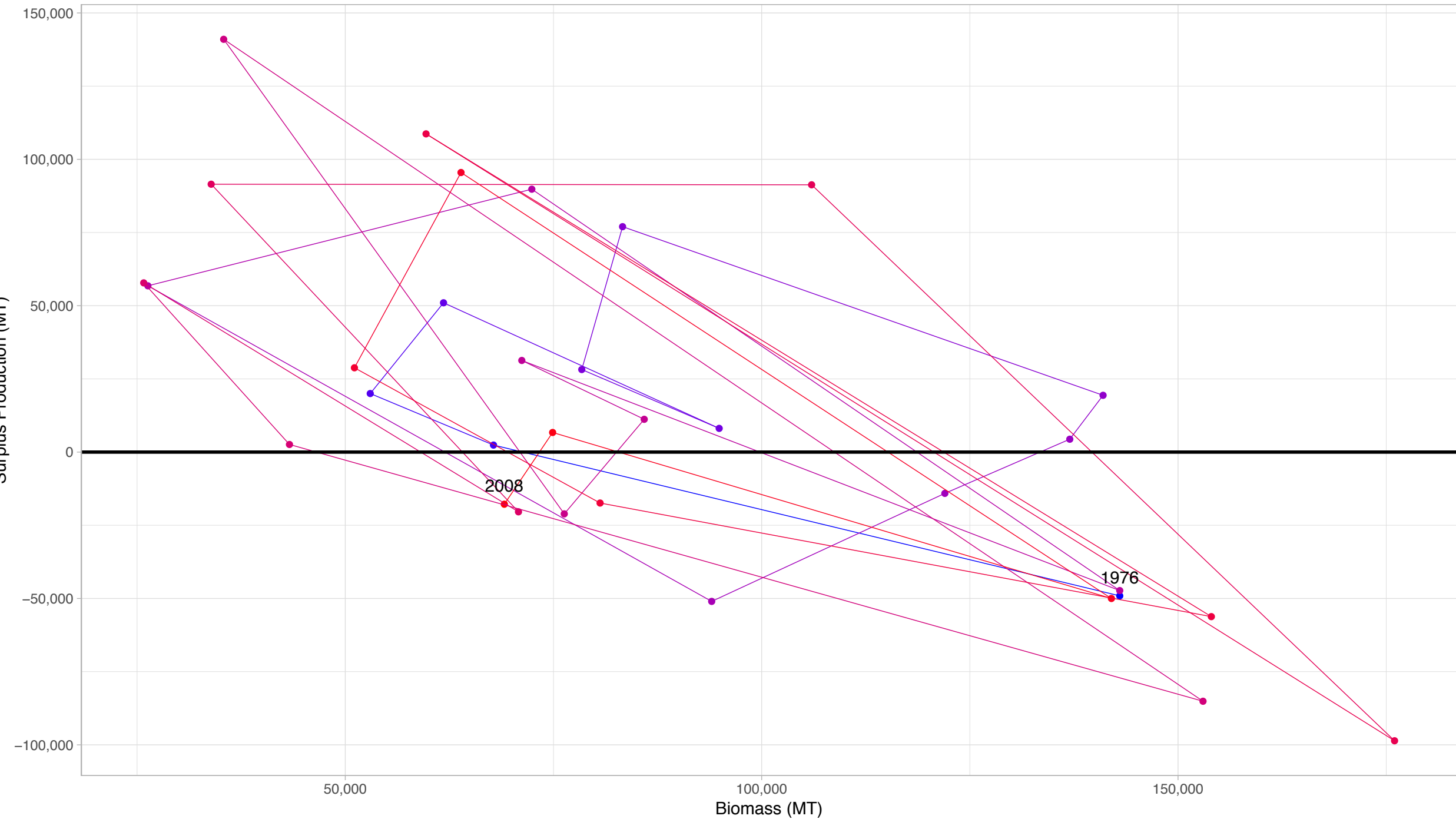
First and last years with recorded surplus production are labeled

Red snapper Gulf of Mexico in US Southeast and Gulf Region



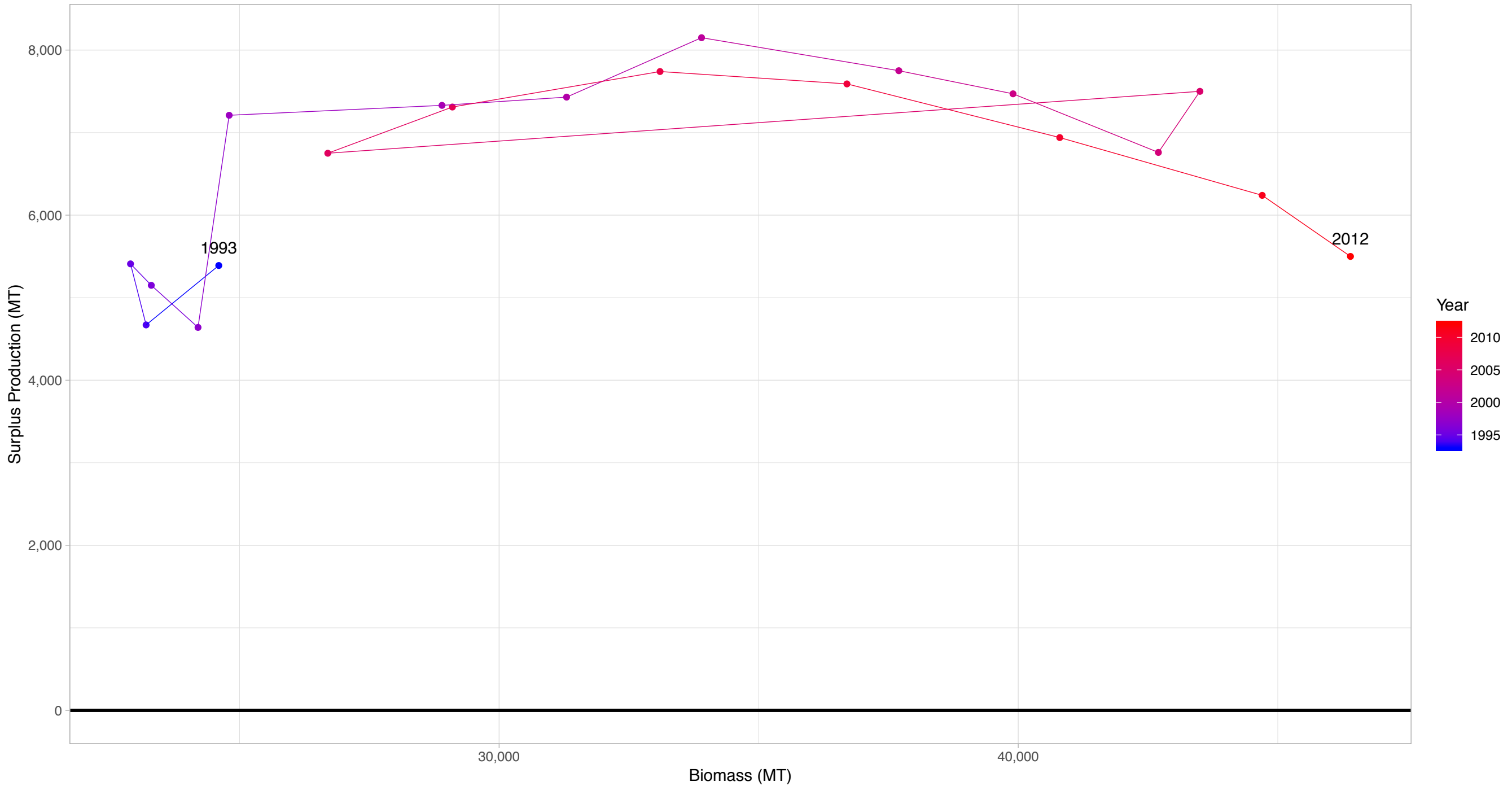
First and last years with recorded surplus production are labeled

Longfin inshore squid Atlantic Coast in US Southeast and Gulf Region



First and last years with recorded surplus production are labeled

Red grouper Gulf of Mexico in US Southeast and Gulf Region



First and last years with recorded surplus production are labeled