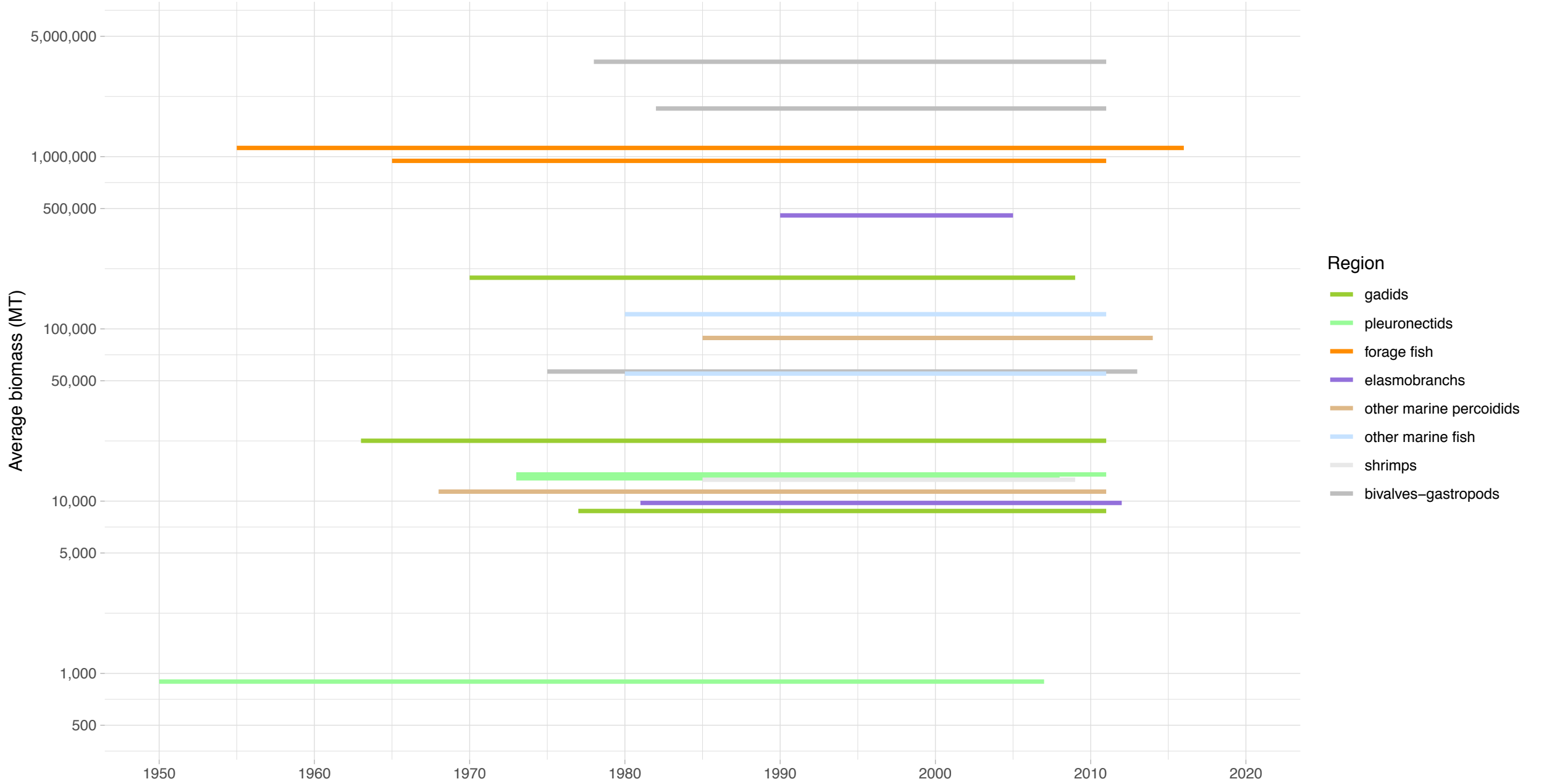
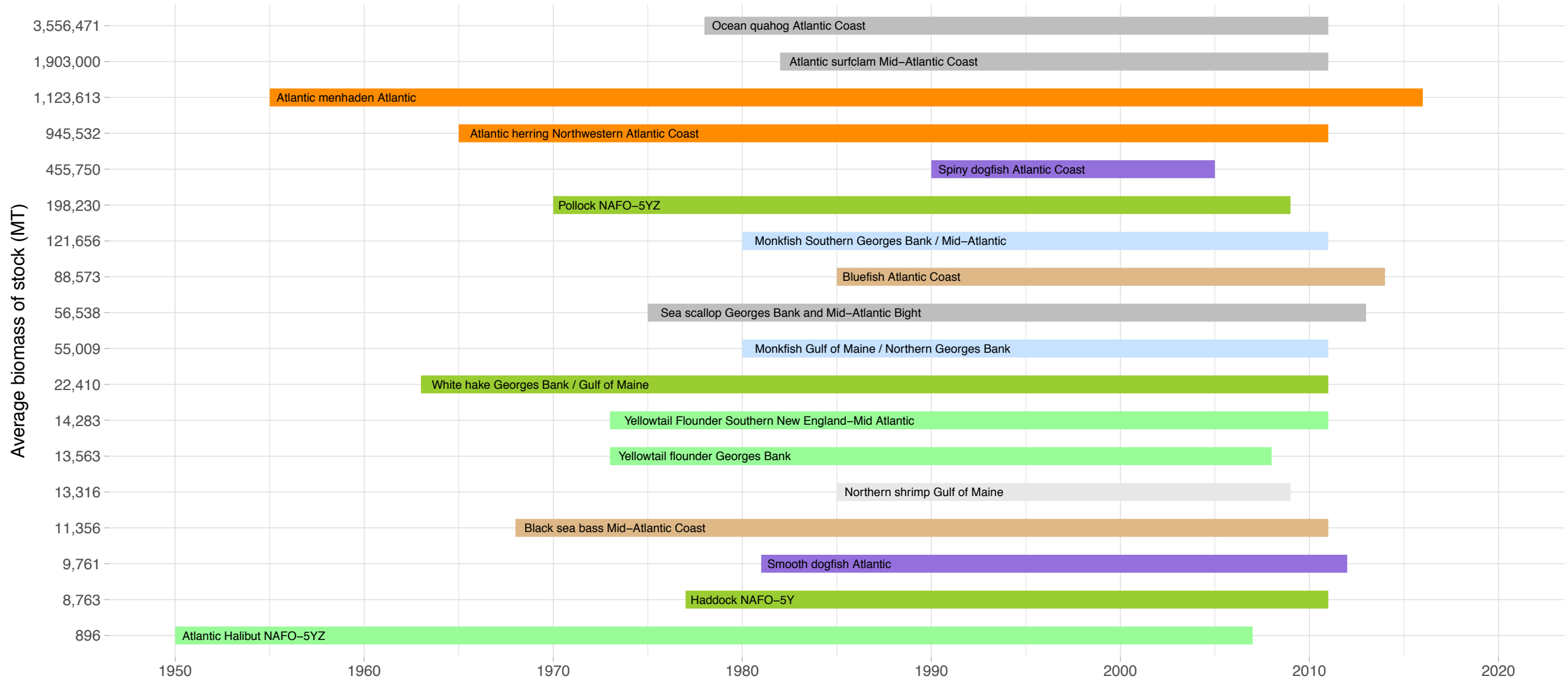


# Biomass Coverage in US East Coast Region





# Biomass Coverage Over Time in US East Coast Region

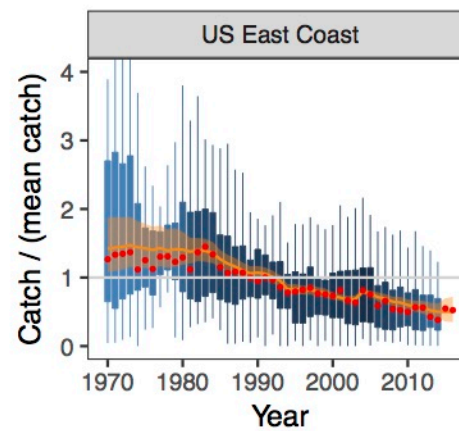
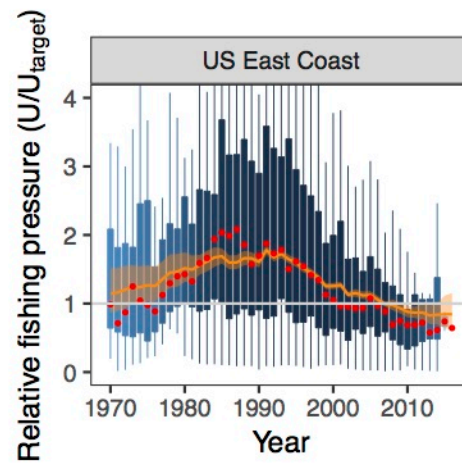
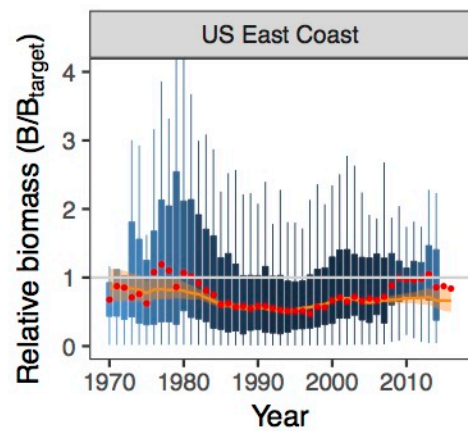
Stocks ordered from lowest to highest average biomass



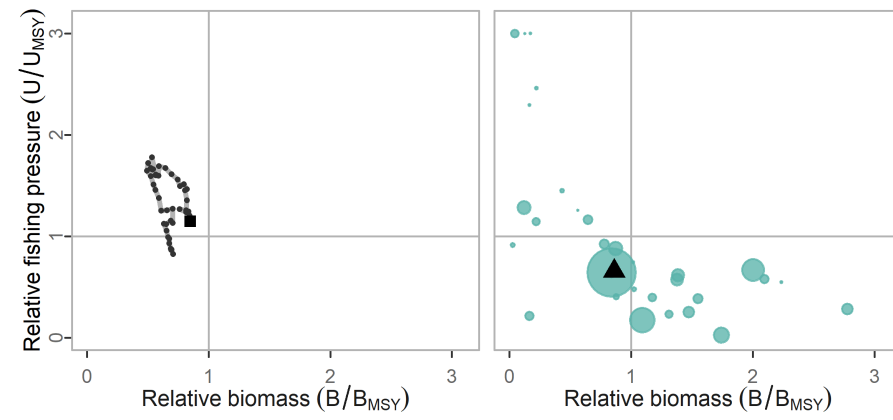


Summary method:  Median

 State-space model prediction

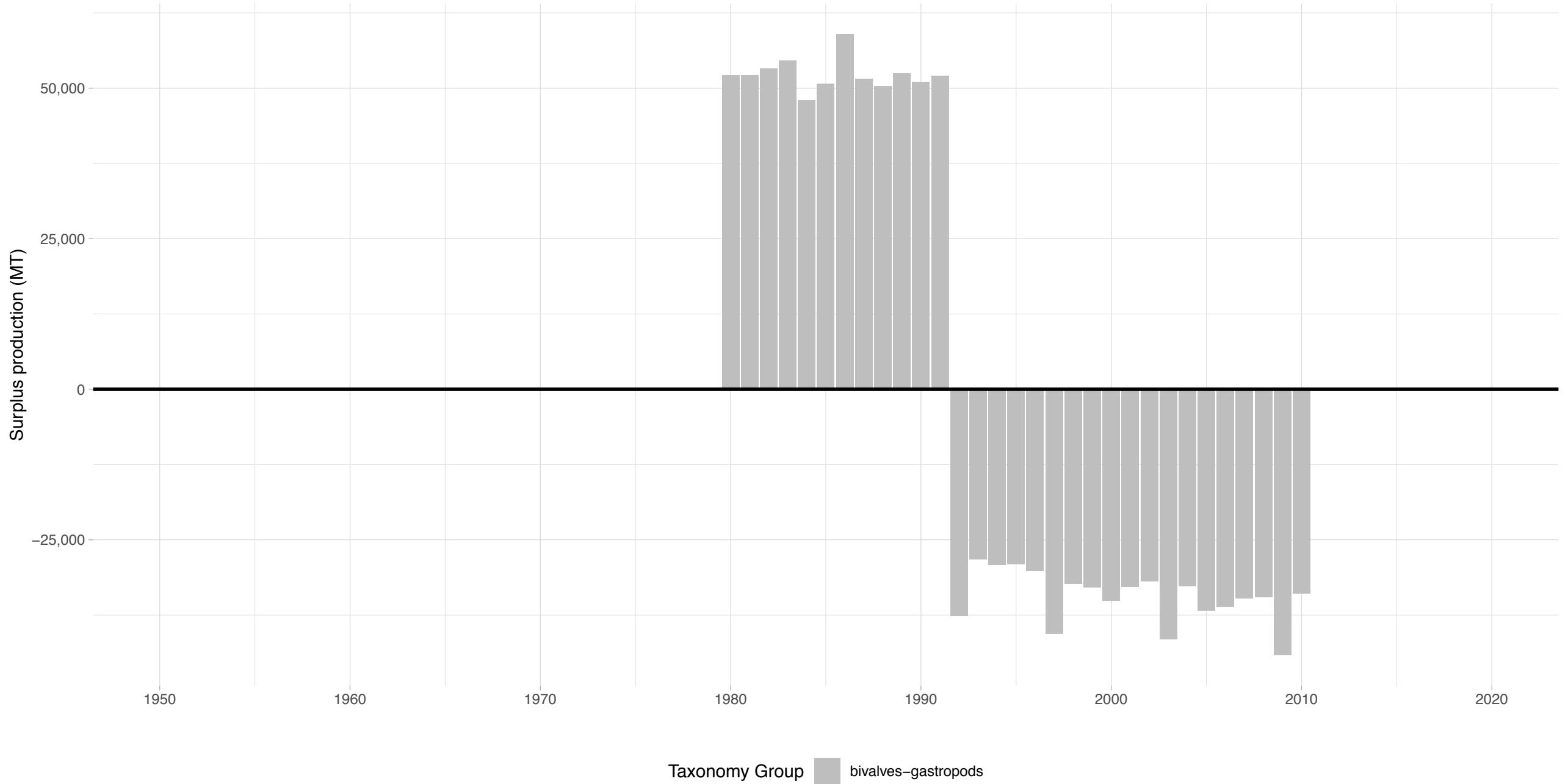


US East Coast



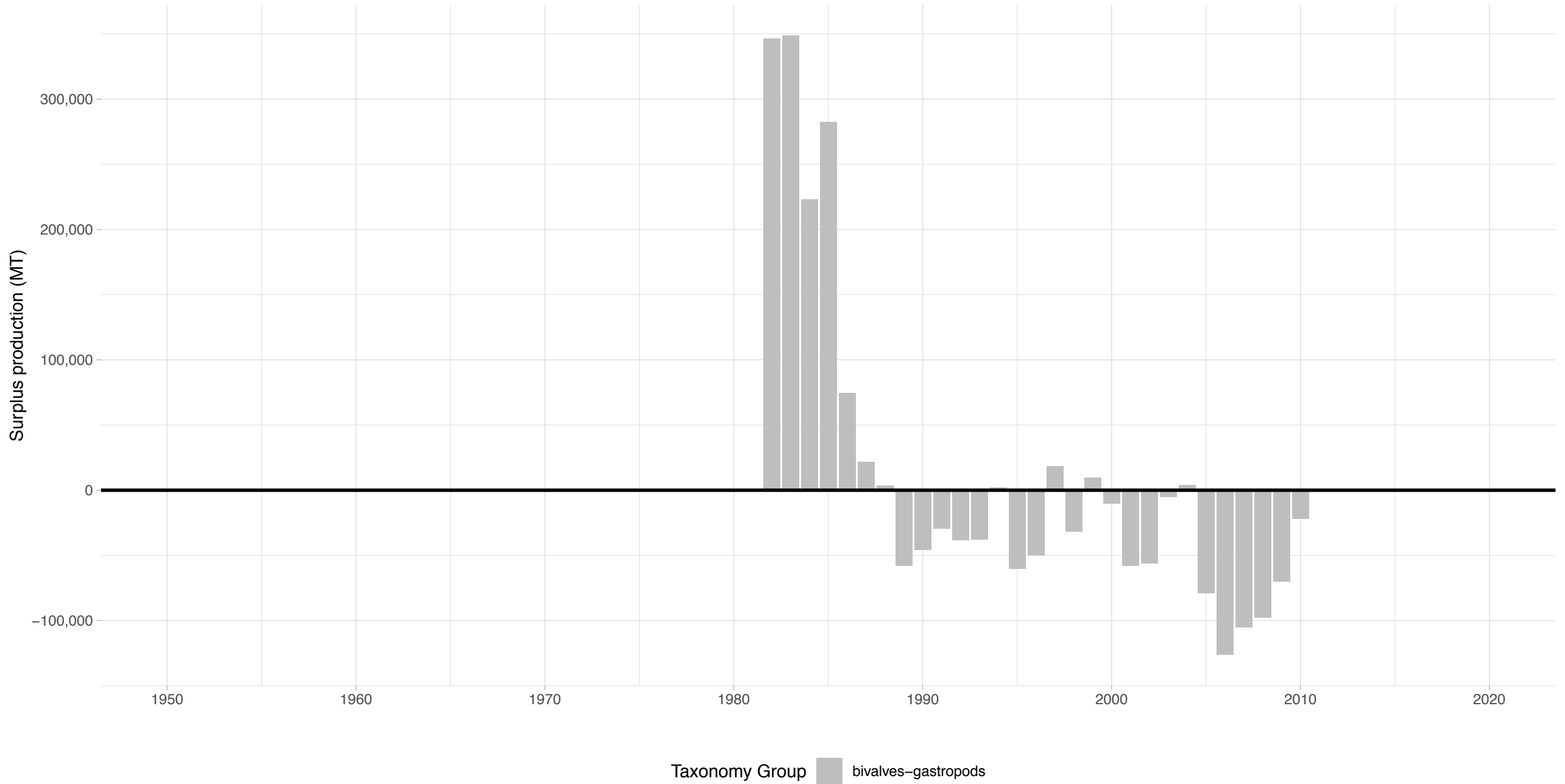
# Ocean quahog Atlantic Coast – US East Coast Region

Stock represents 5.54% of average absolute surplus production

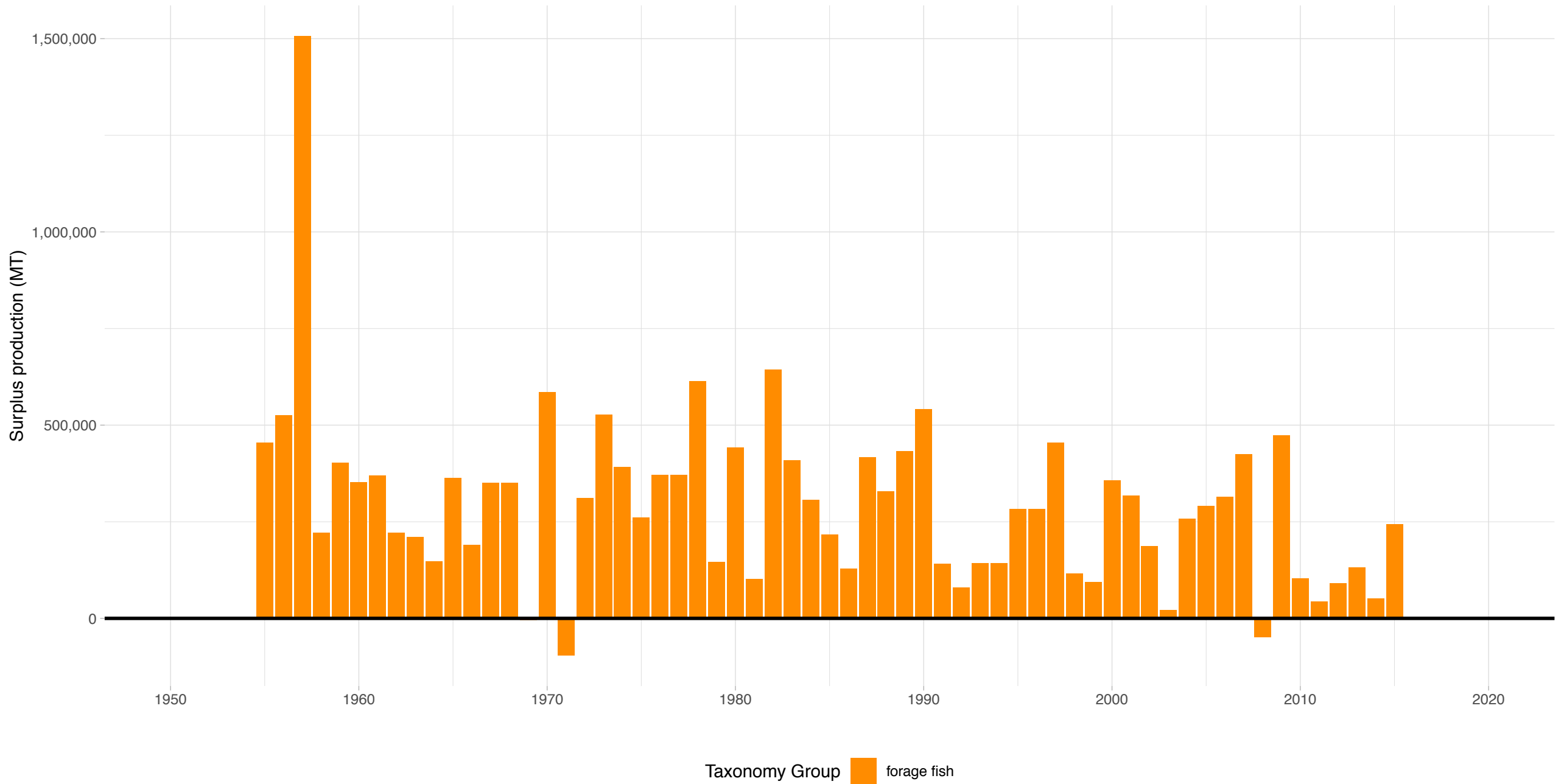


# Atlantic surfclam Mid-Atlantic Coast – US East Coast Region

Stock represents 10.7% of average absolute surplus production

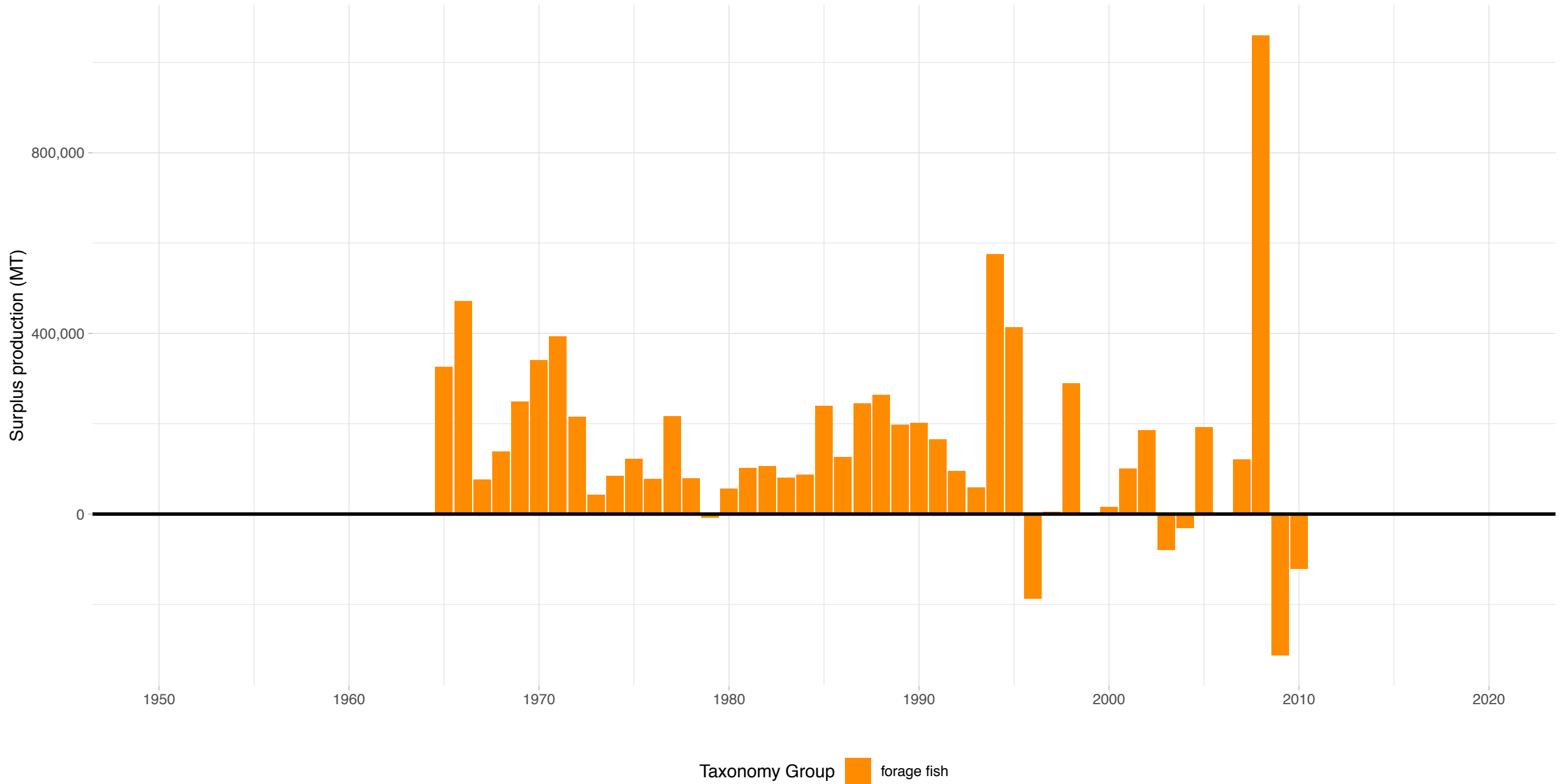


Atlantic menhaden Atlantic – US East Coast Region  
Stock represents 40.5% of average absolute surplus production



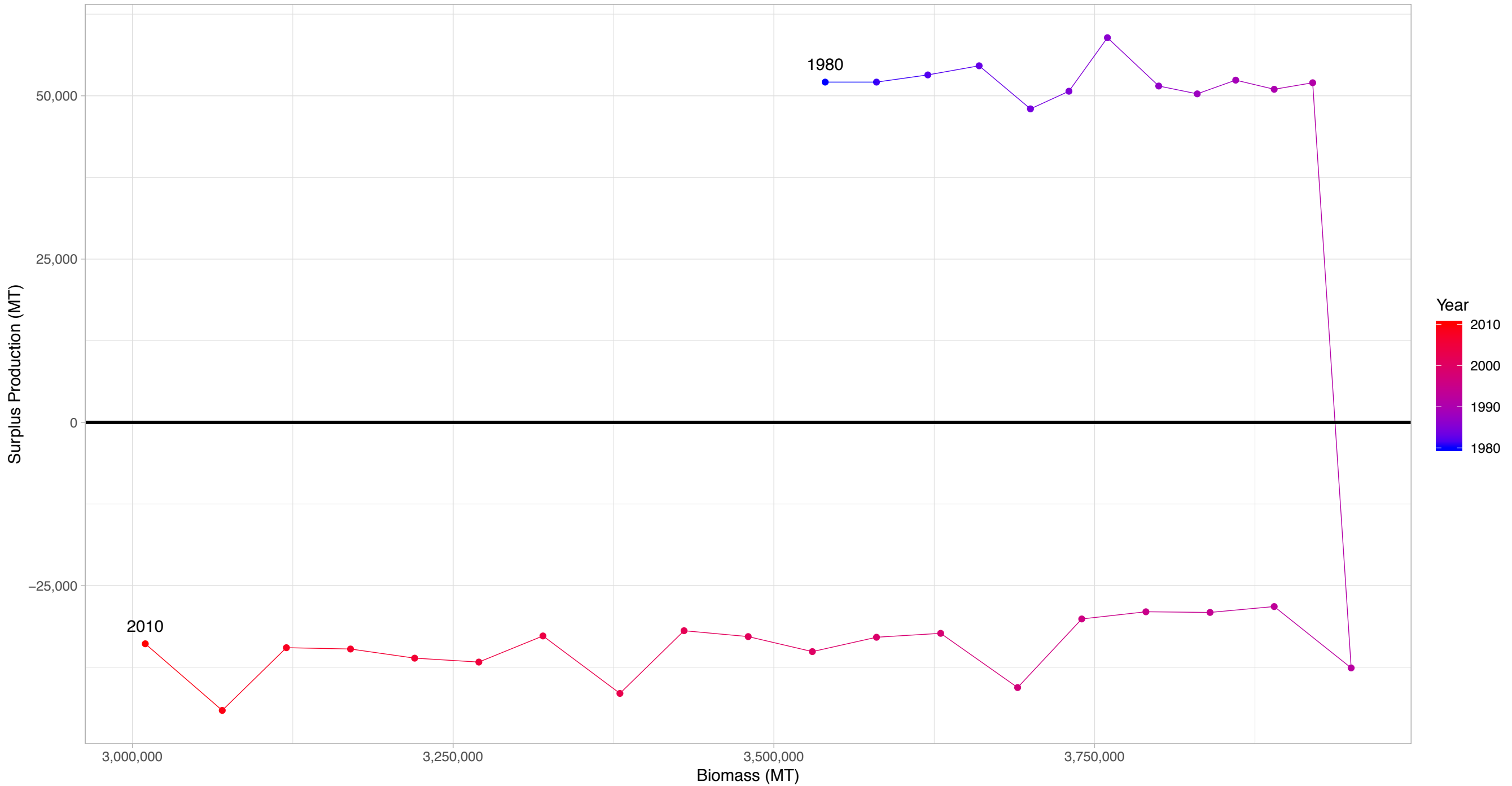
# Atlantic herring Northwestern Atlantic Coast – US East Coast Region

Stock represents 24.9% of average absolute surplus production



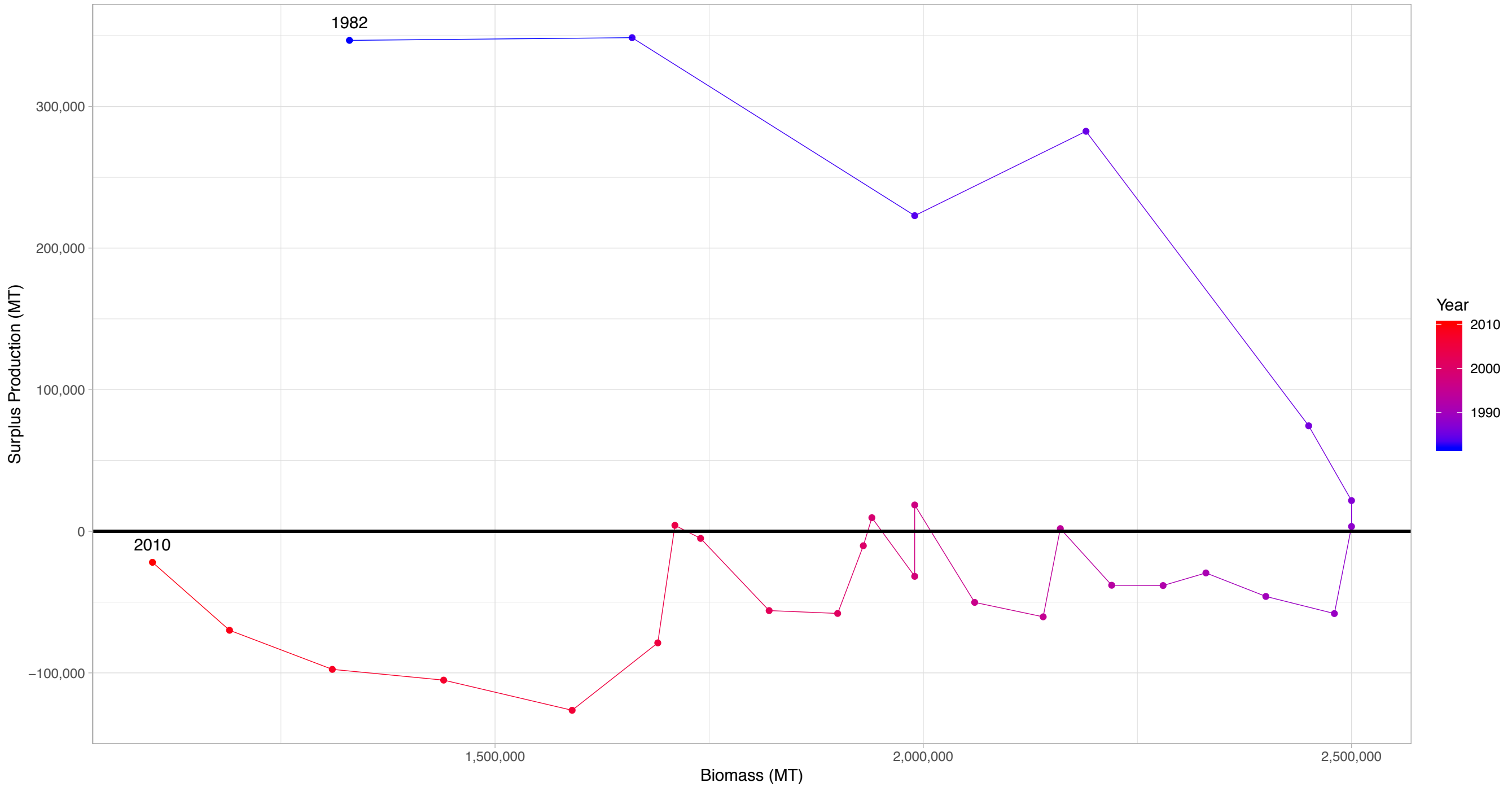


# Ocean quahog Atlantic Coast in US East Coast Region



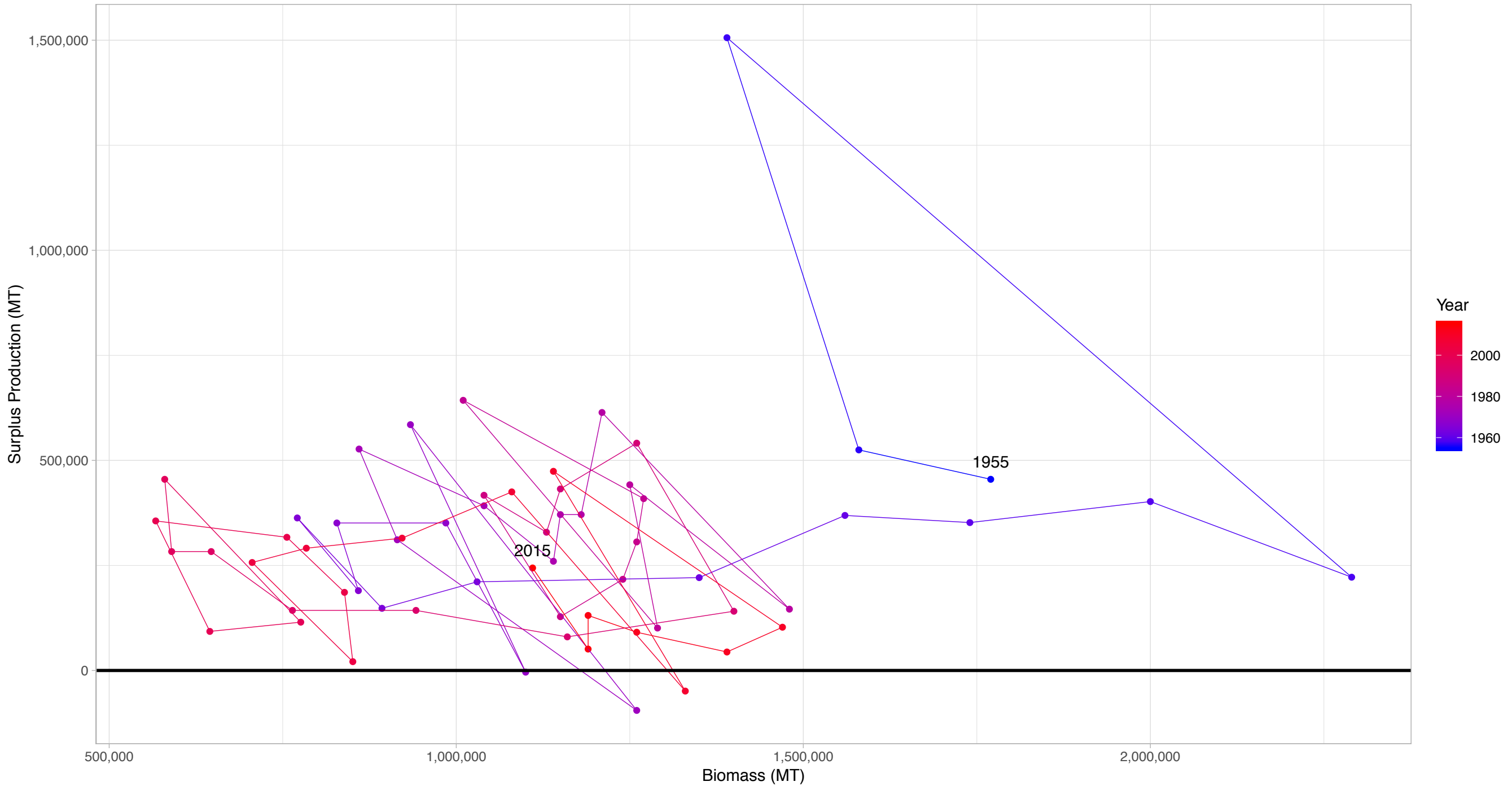
First and last years with recorded surplus production are labeled

# Atlantic surfclam Mid-Atlantic Coast in US East Coast Region



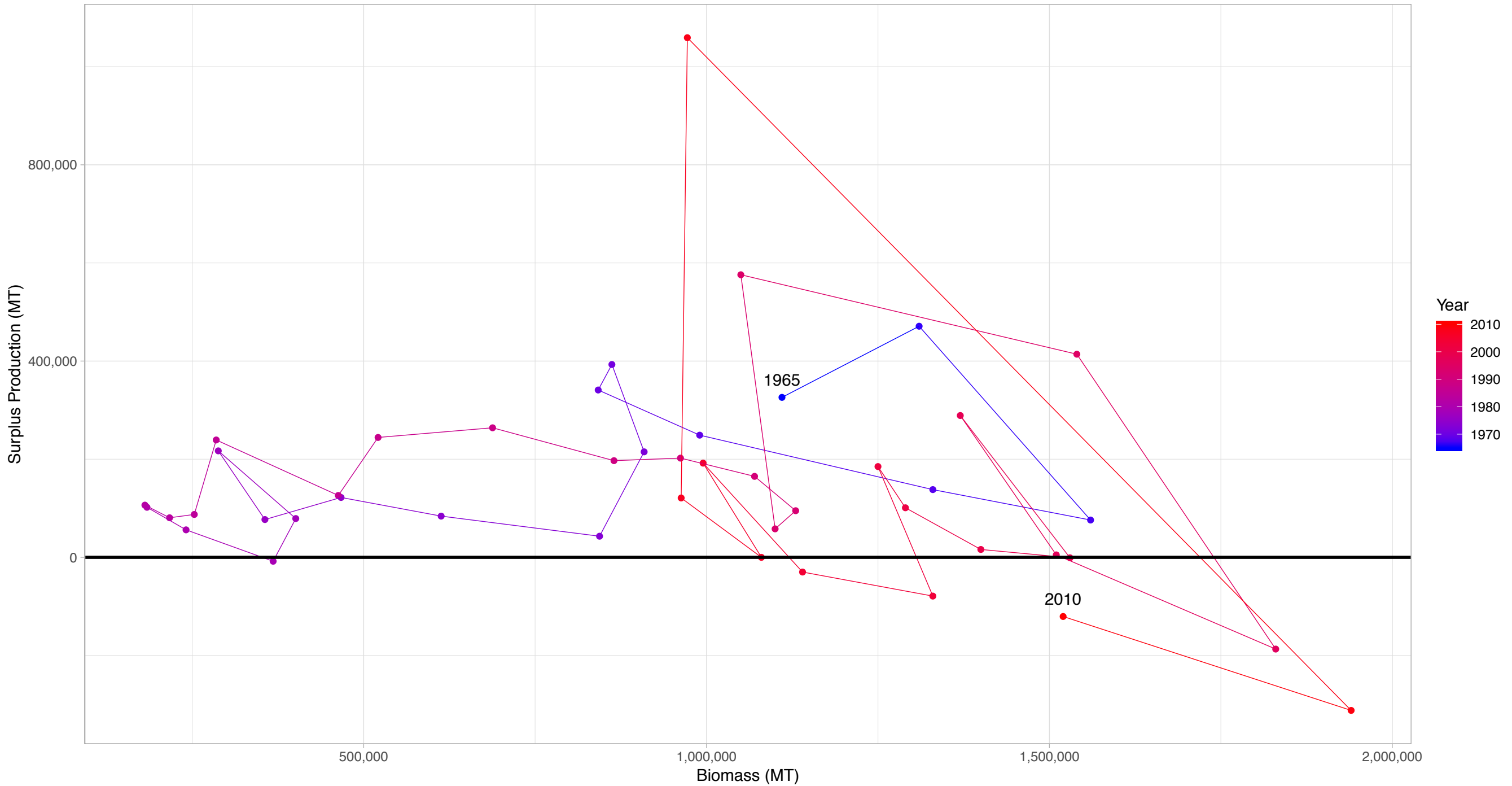
First and last years with recorded surplus production are labeled

# Atlantic menhaden Atlantic in US East Coast Region



First and last years with recorded surplus production are labeled

# Atlantic herring Northwest Atlantic Coast in US East Coast Region



First and last years with recorded surplus production are labeled