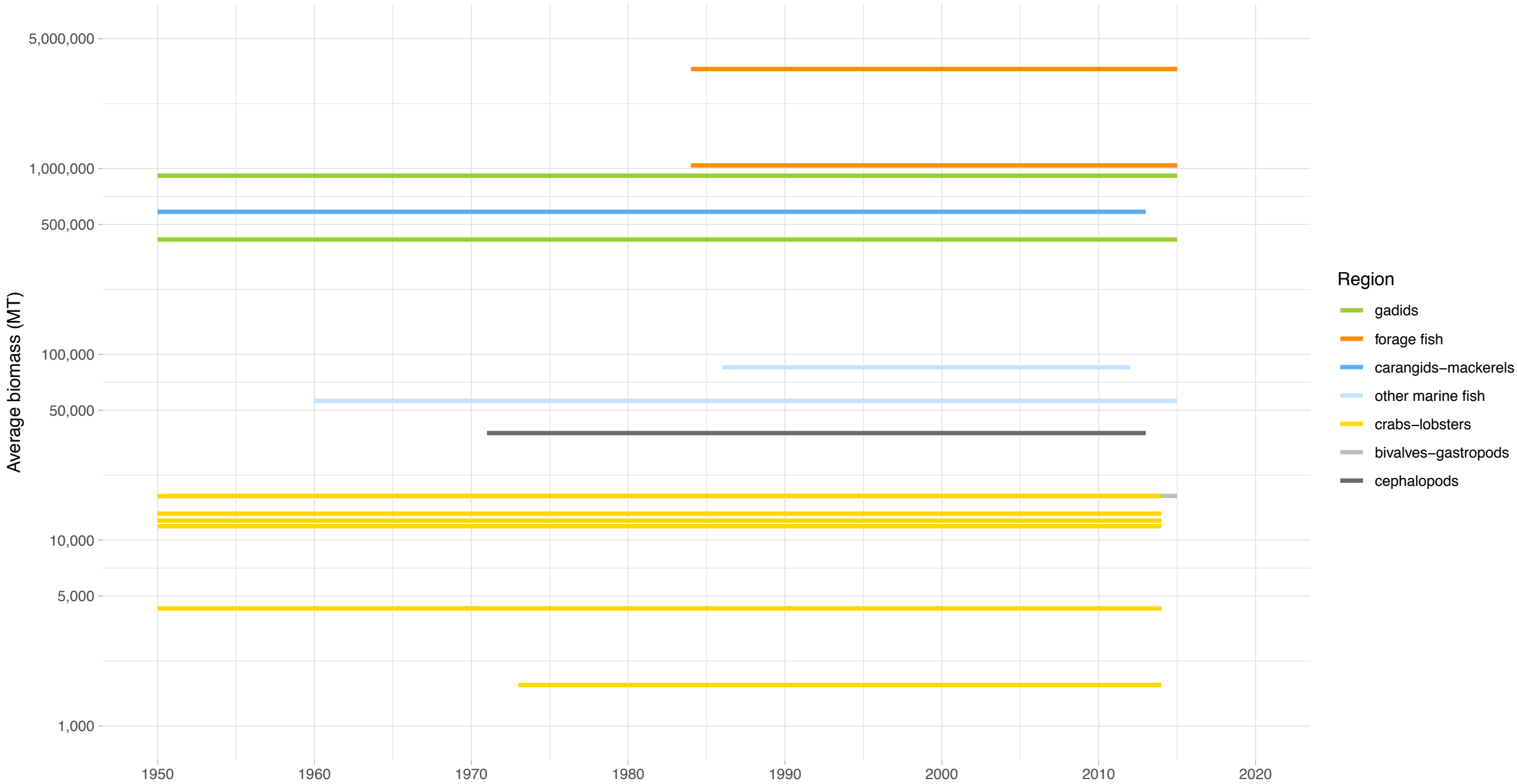
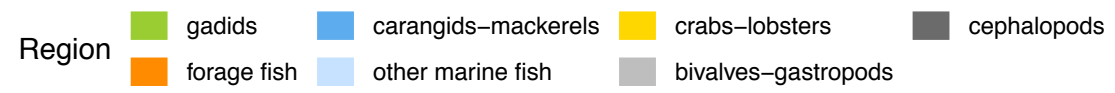
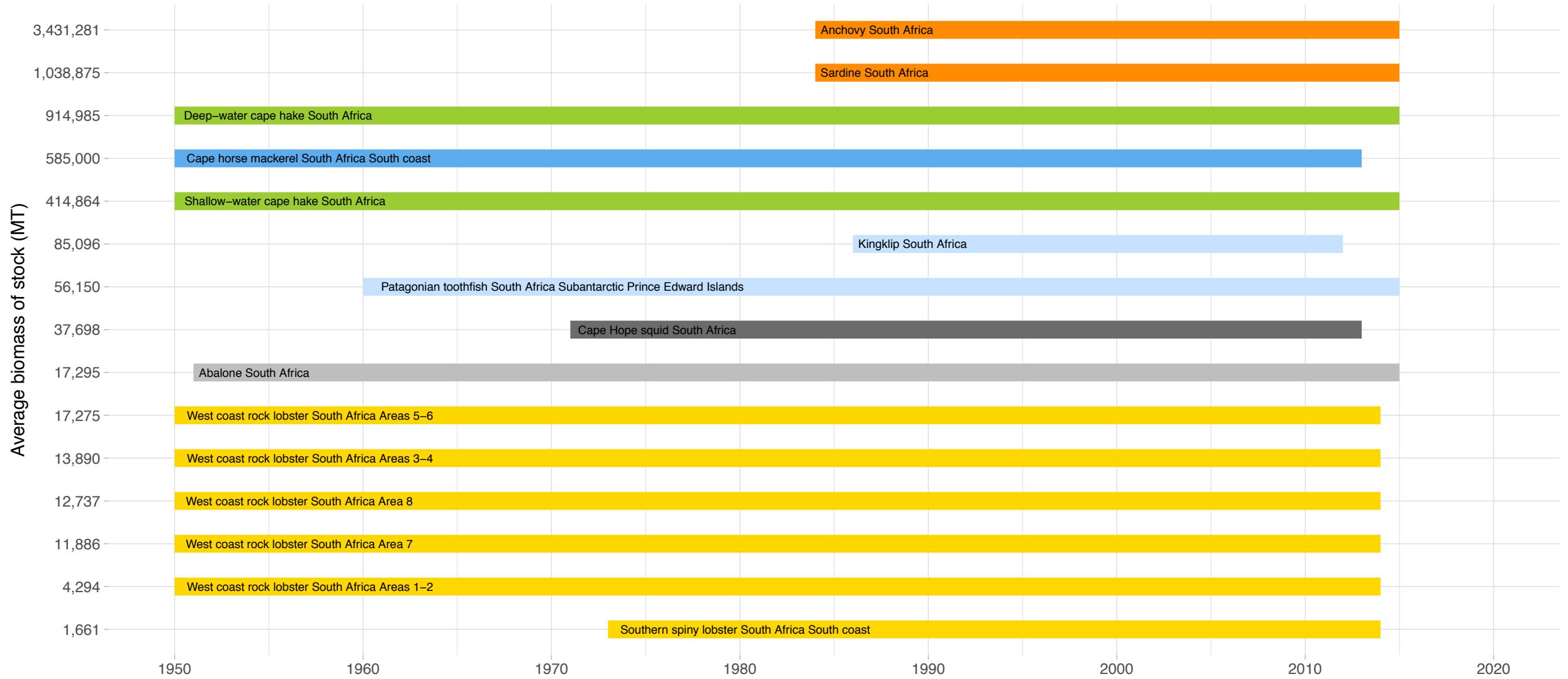


Biomass Coverage in South Africa Region





Biomass Coverage Over Time in South Africa Region

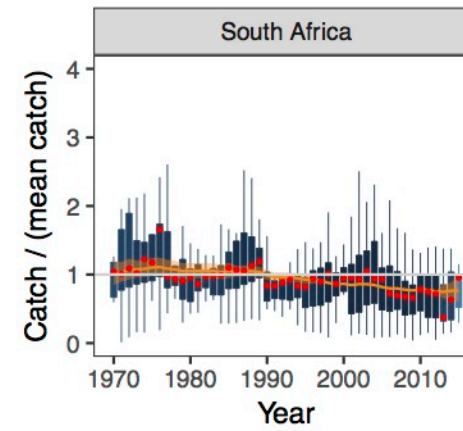
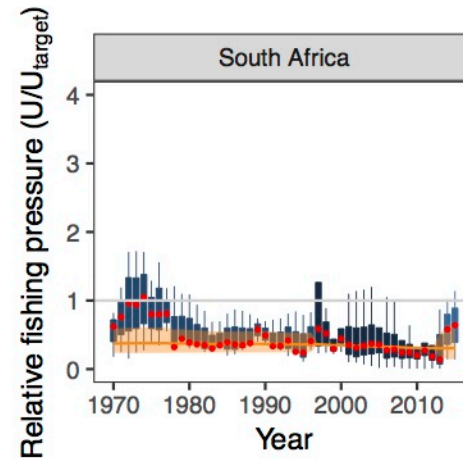
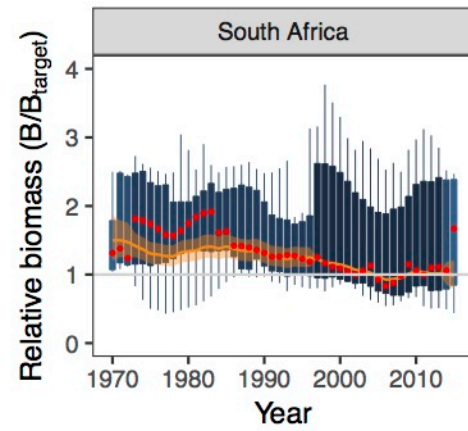
Stocks ordered from lowest to highest average biomass



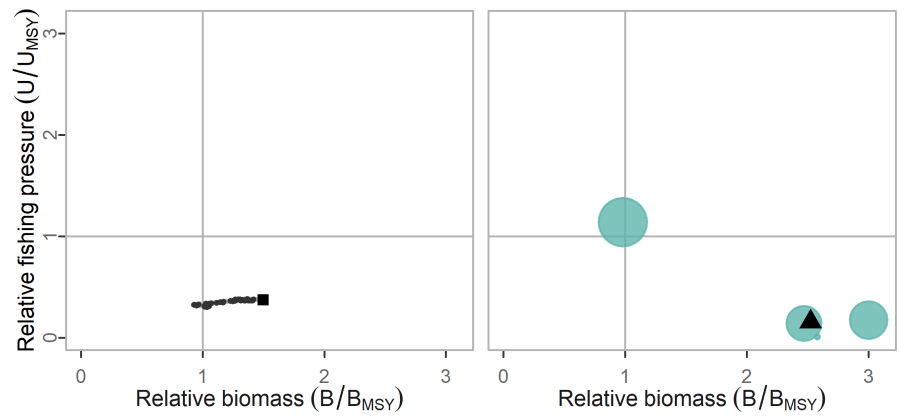


Summary method:  Median

 State-space model prediction

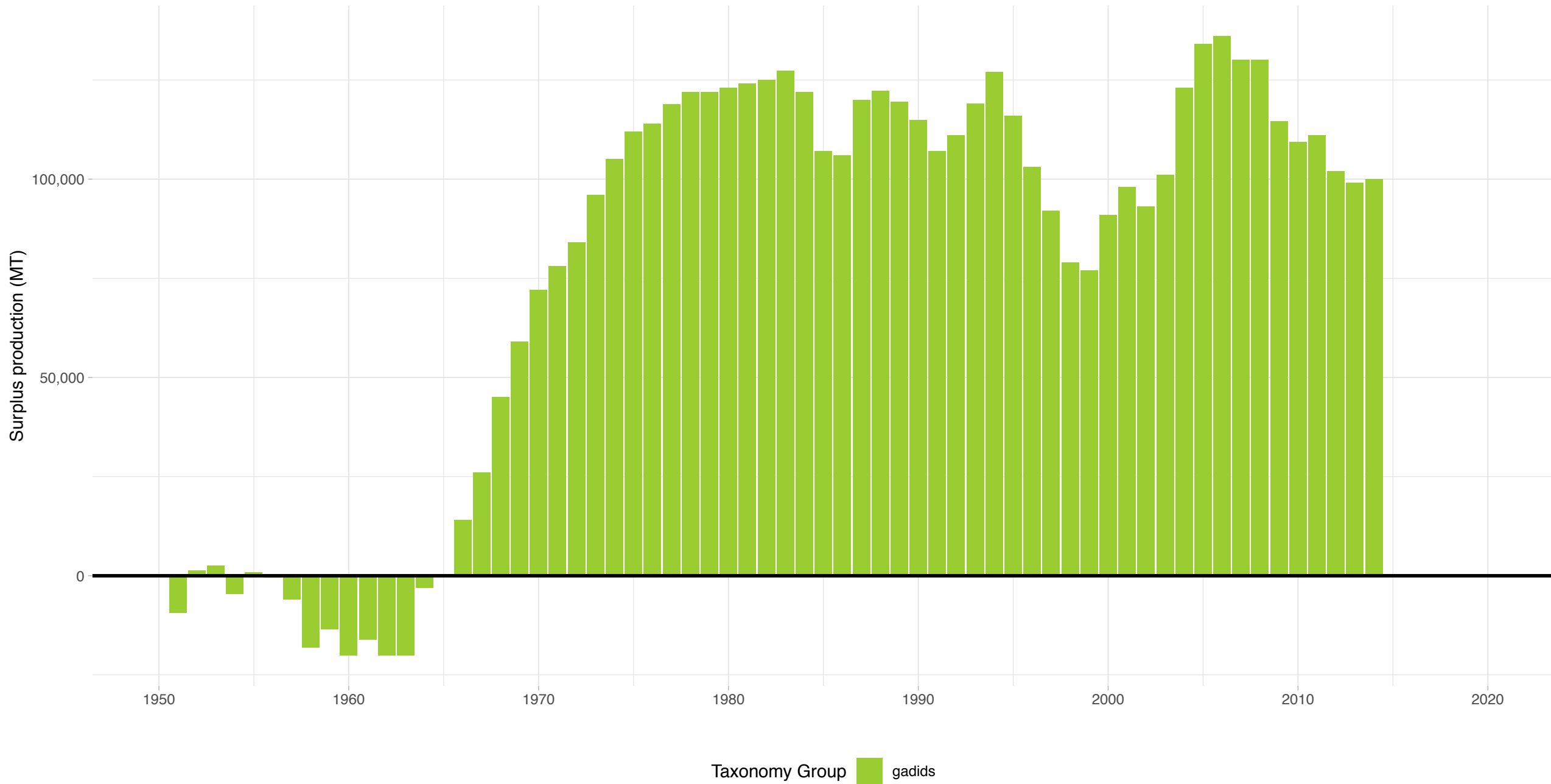


South Africa

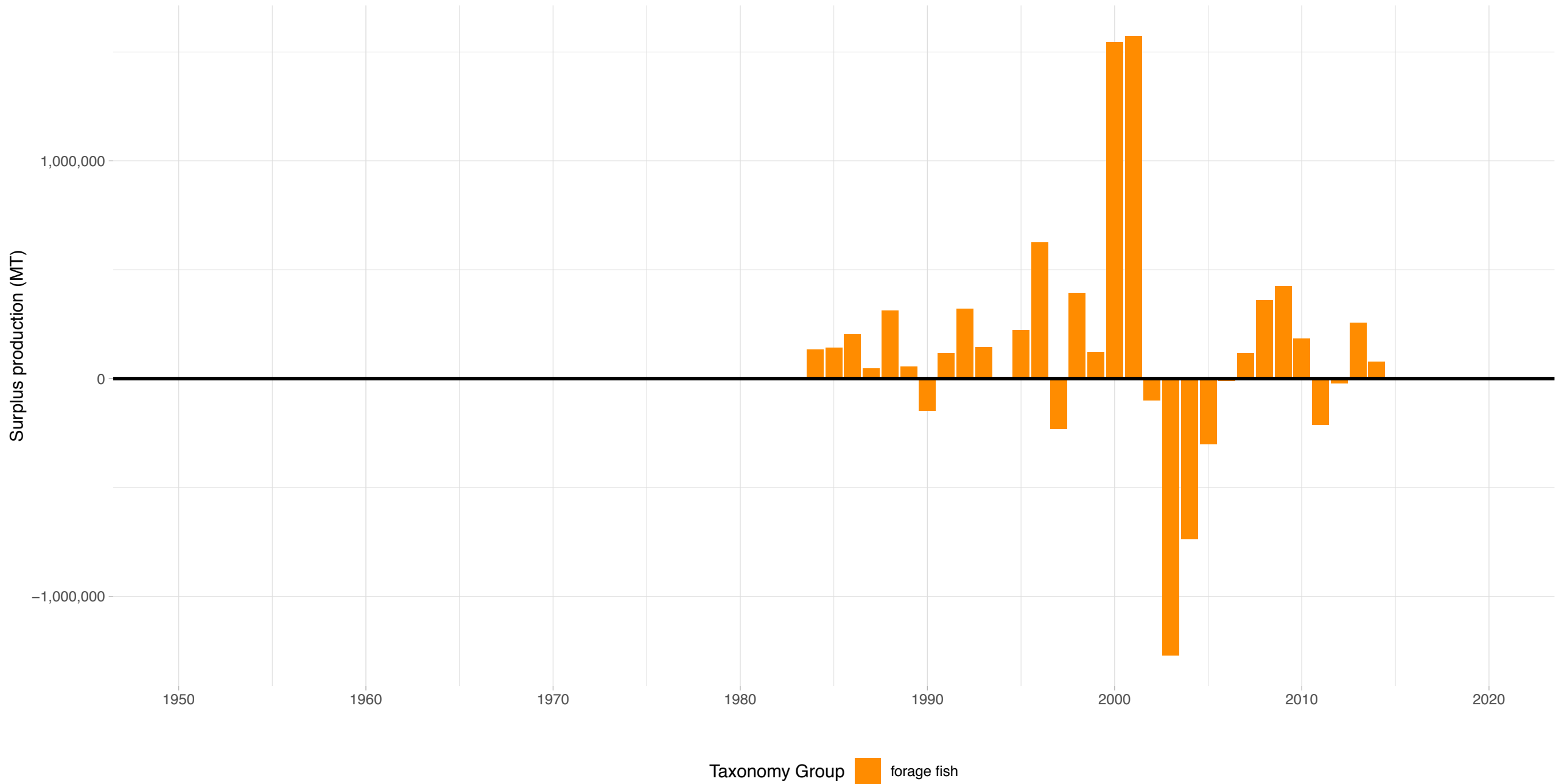


Deep-water cape hake South Africa – South Africa Region

Stock represents 11.0% of average absolute surplus production

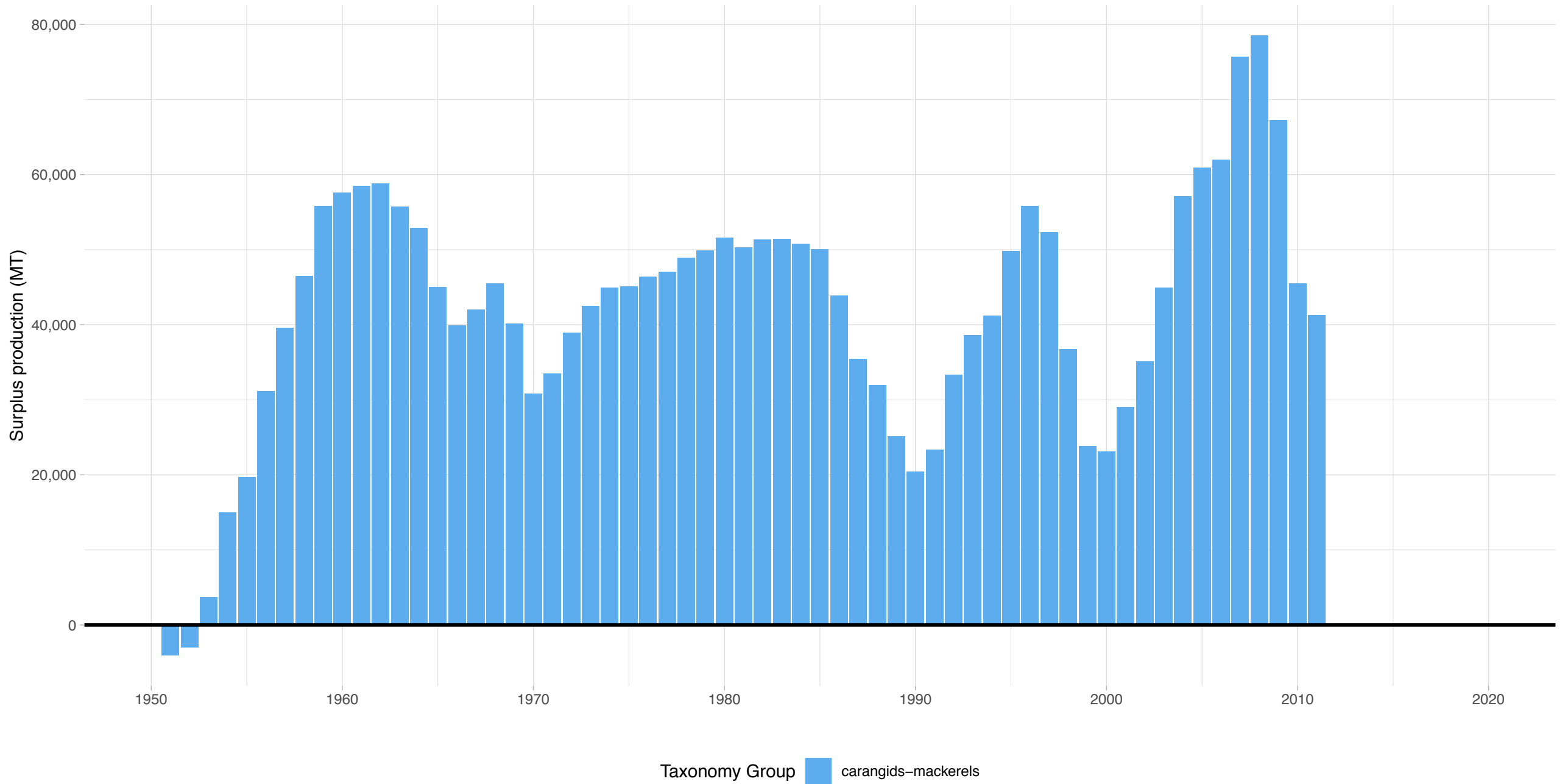


Sardine South Africa – South Africa Region
Stock represents 69.2% of average absolute surplus production



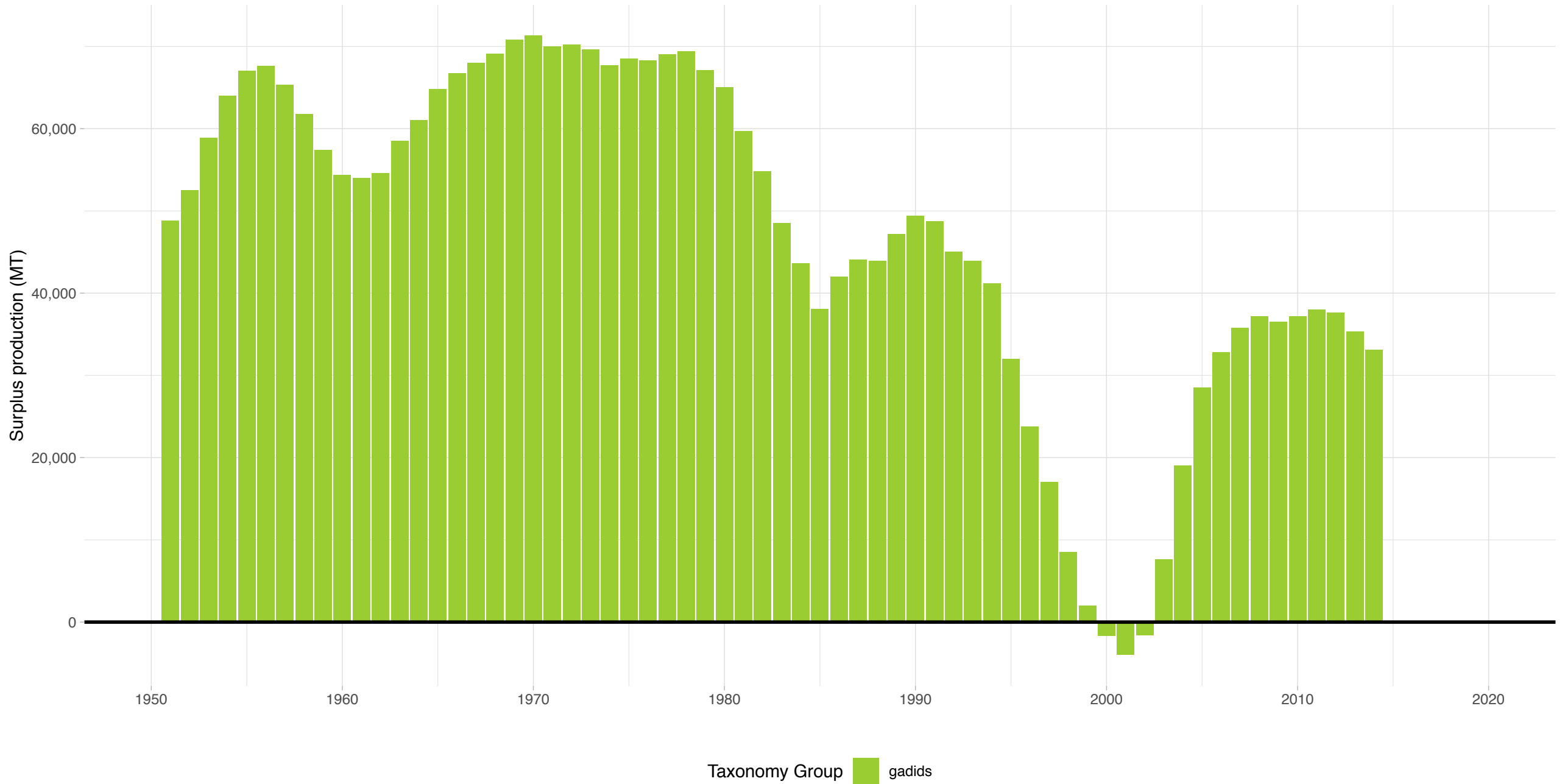
Cape horse mackerel South Africa South coast – South Africa Region

Stock represents 8.47% of average absolute surplus production

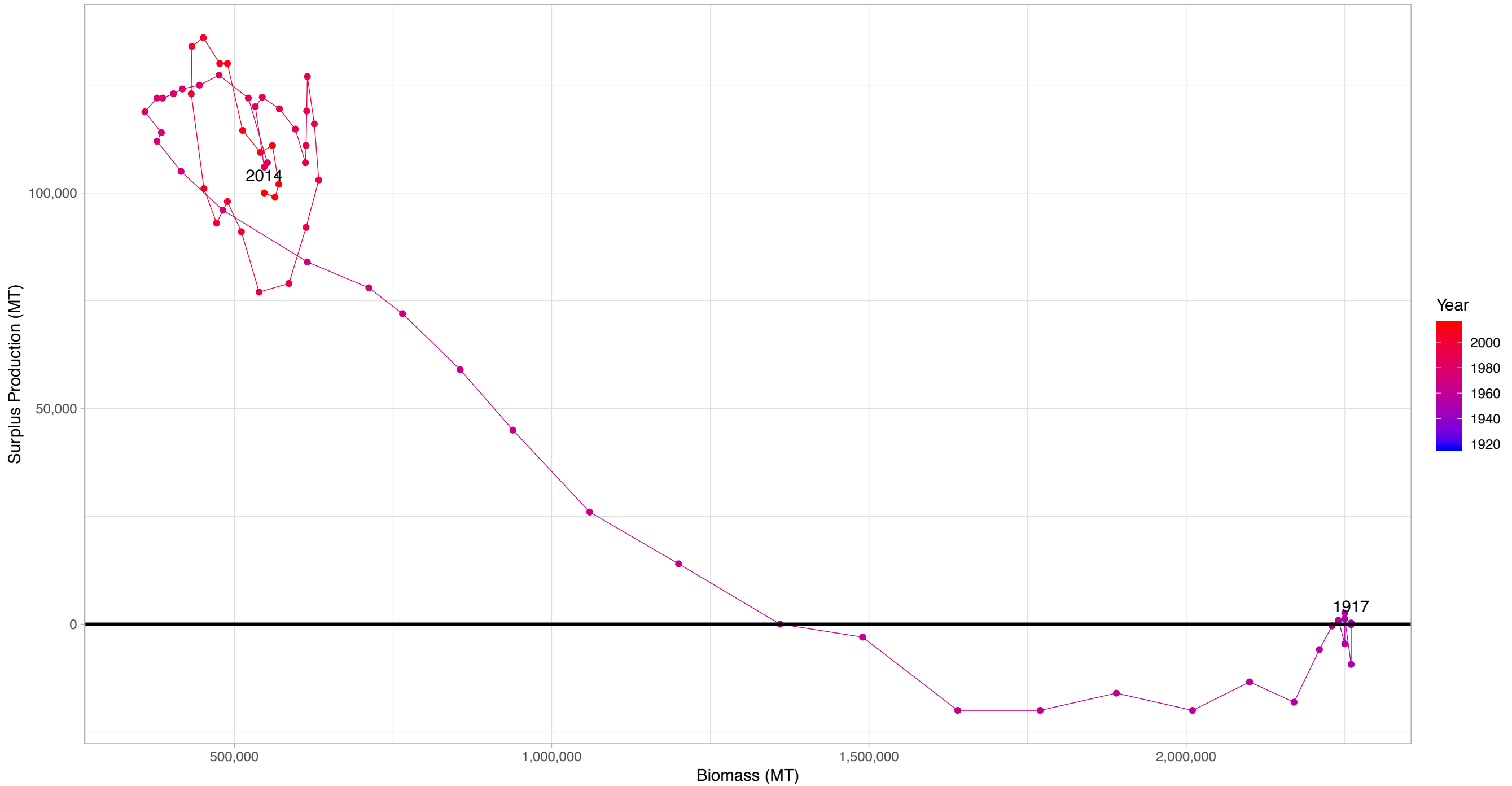


Shallow-water cape hake South Africa – South Africa Region

Stock represents 7.33% of average absolute surplus production

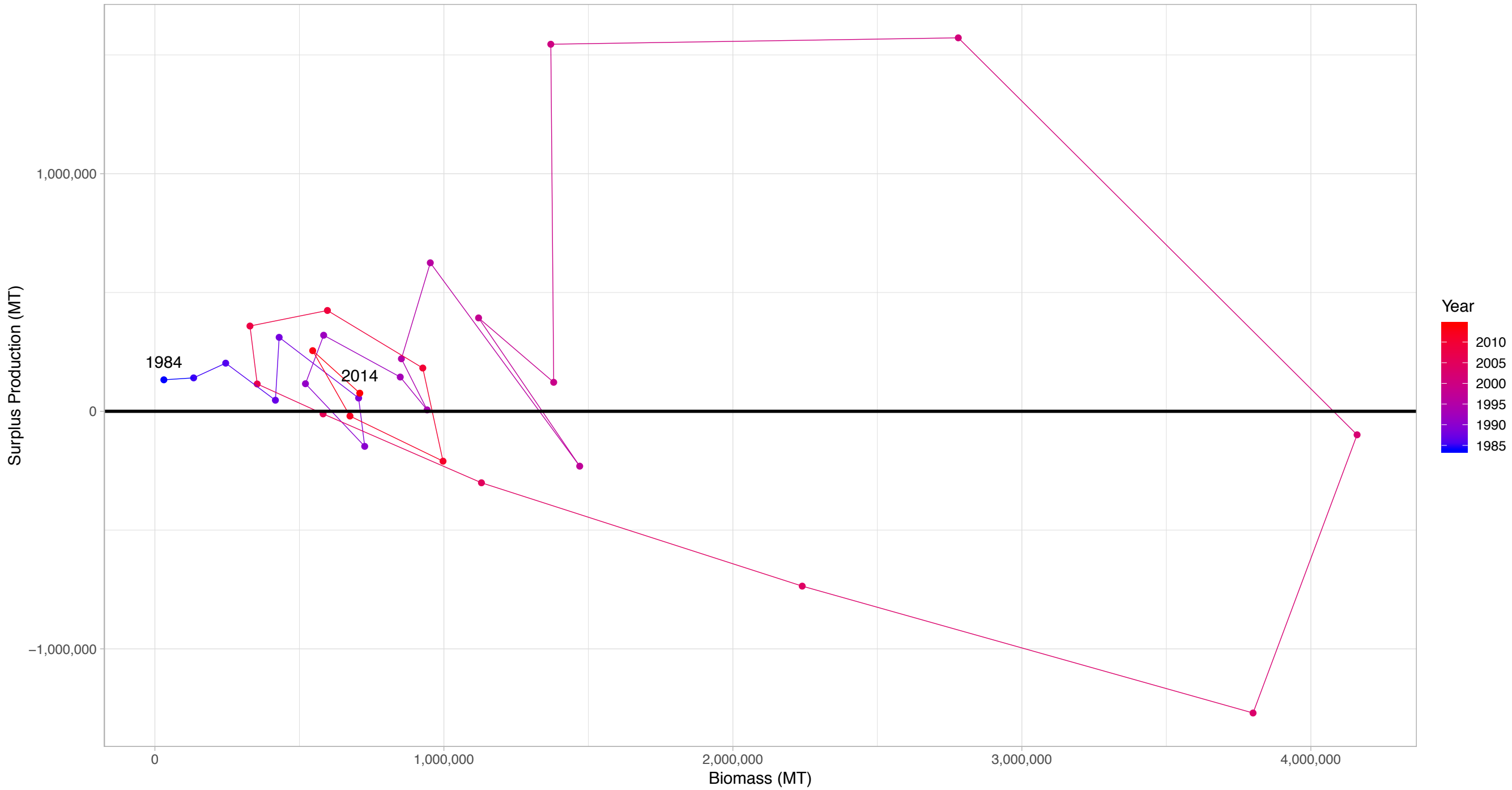


Deep-water cape hake South Africa in South Africa Region



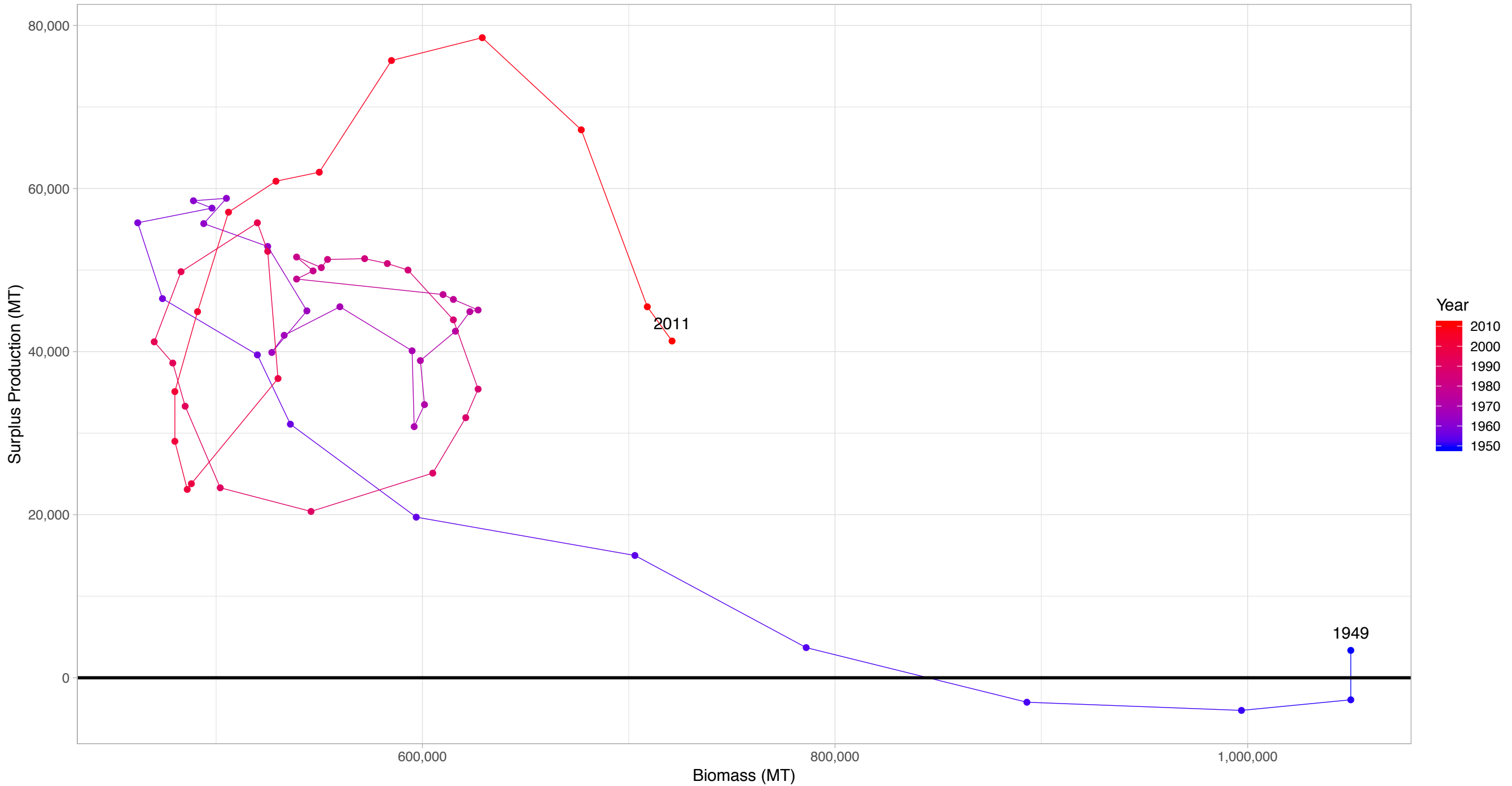
First and last years with recorded surplus production are labeled

Sardine South Africa in South Africa Region



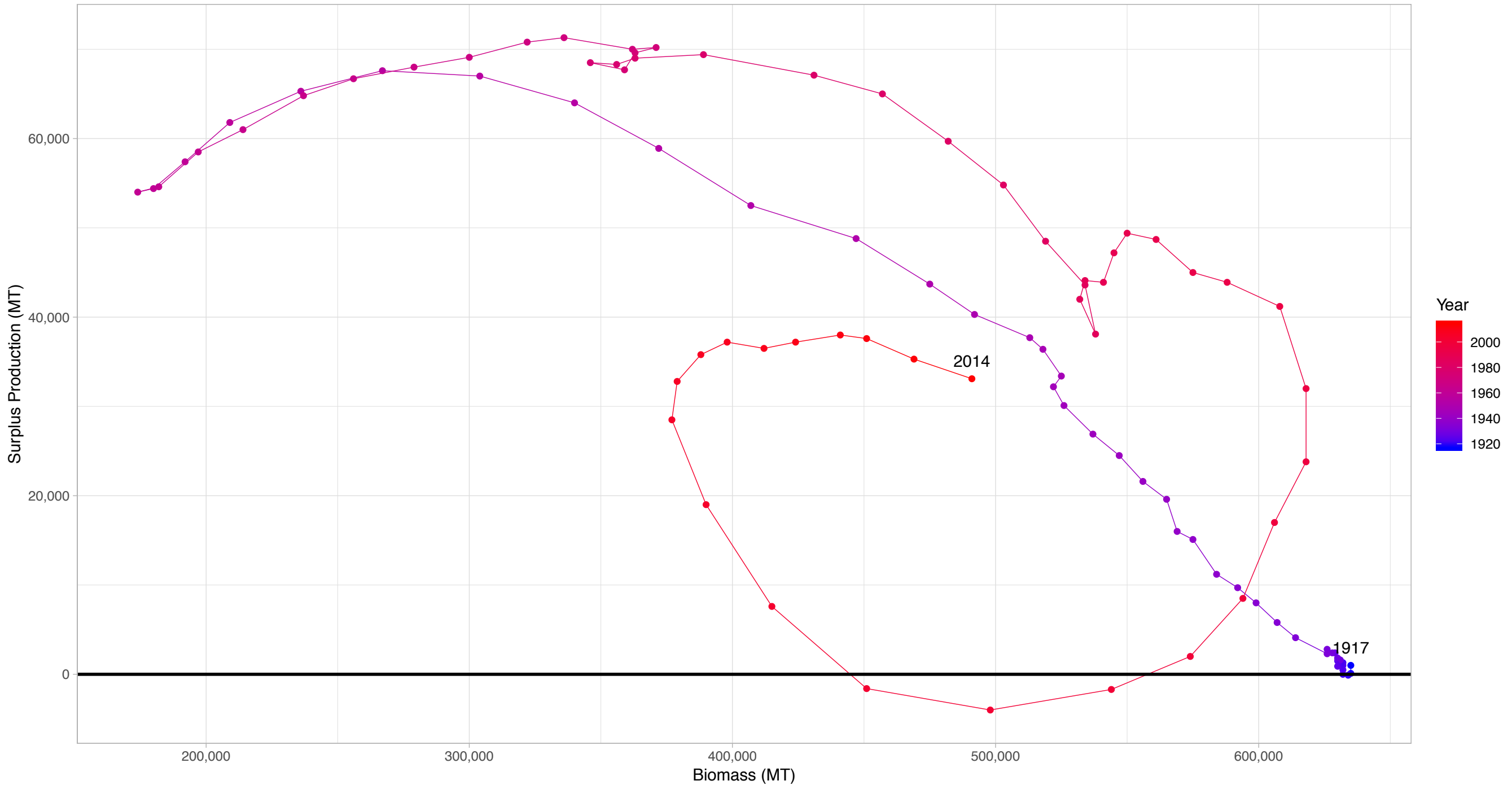
First and last years with recorded surplus production are labeled

Cape horse mackerel South Africa South coast in South Africa Region



First and last years with recorded surplus production are labeled

Shallow-water cape hake South Africa in South Africa Region



First and last years with recorded surplus production are labeled