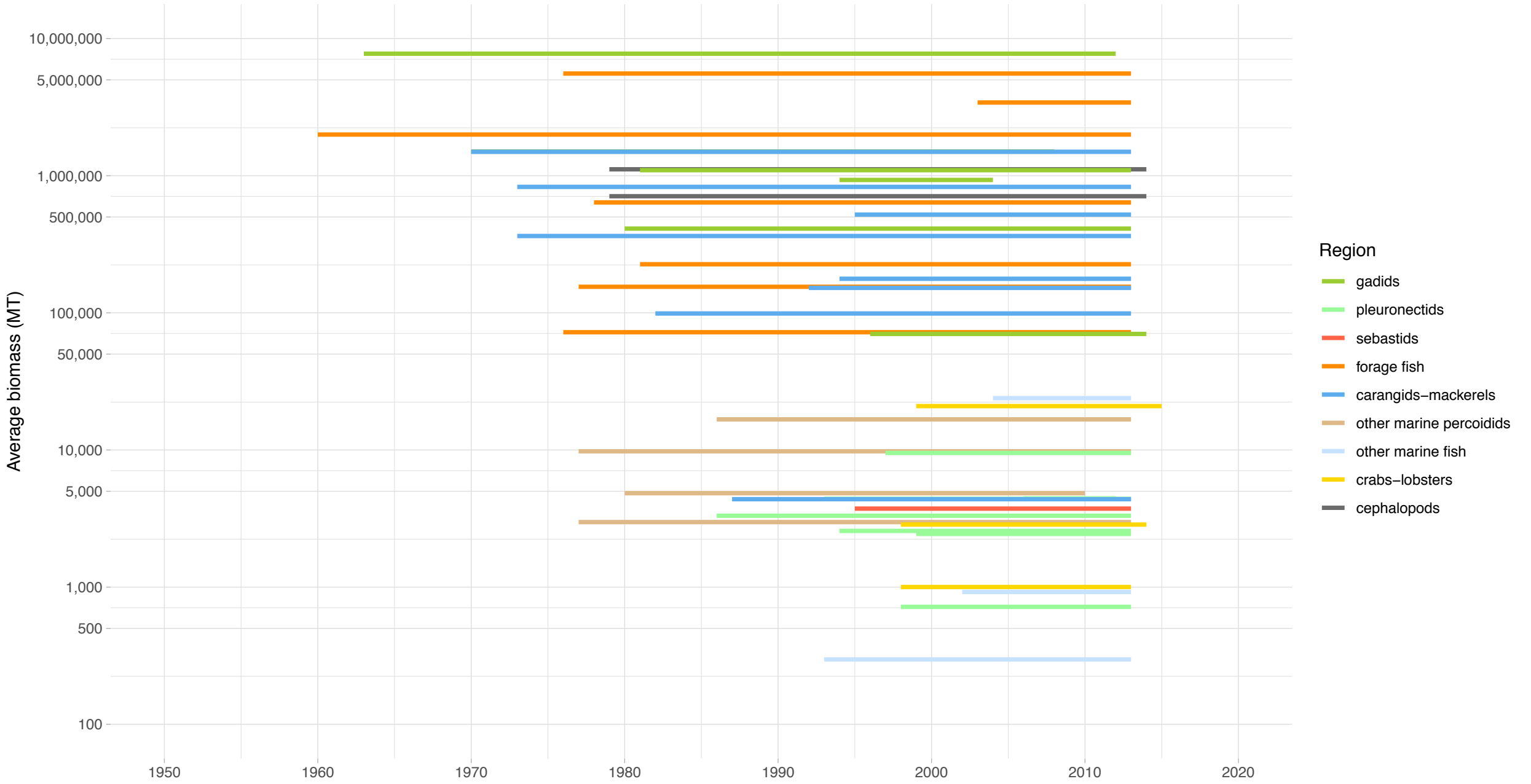
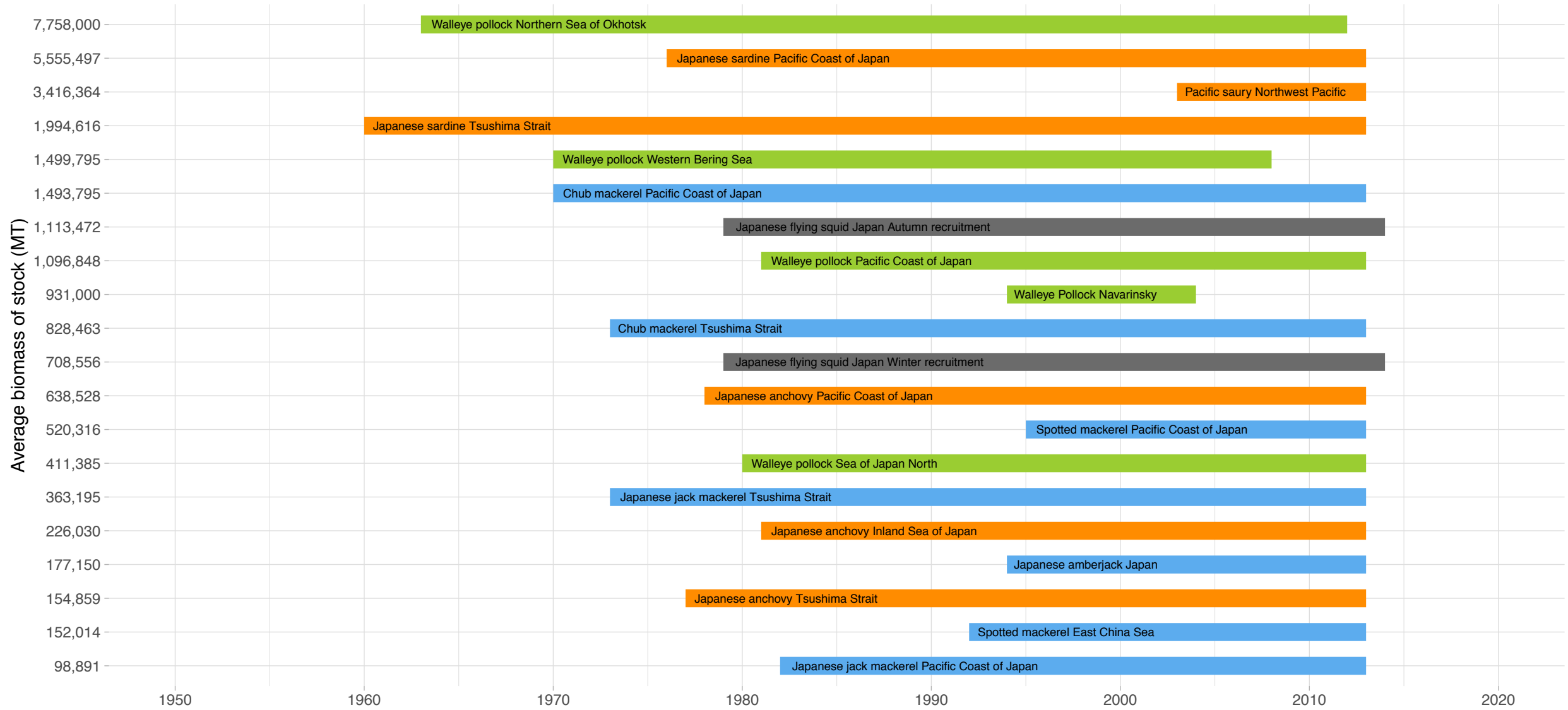


# Biomass Coverage in Northwest Pacific Region



# Biomass Coverage Over Time in Northwest Pacific Region

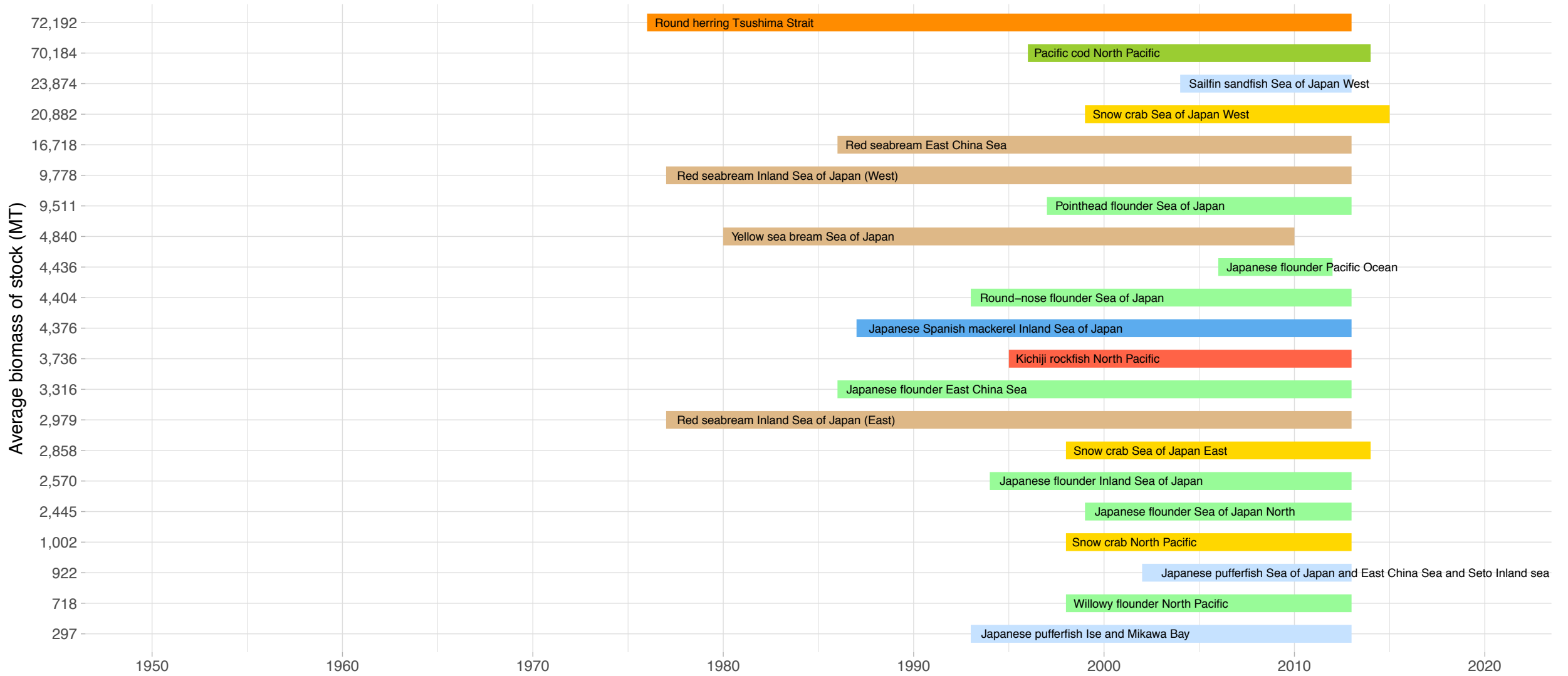
## Stocks with highest average biomass



Region ■ gadids ■ forage fish ■ carangids-mackerels ■ cephalopods

# Biomass Coverage Over Time in Northwest Pacific Region

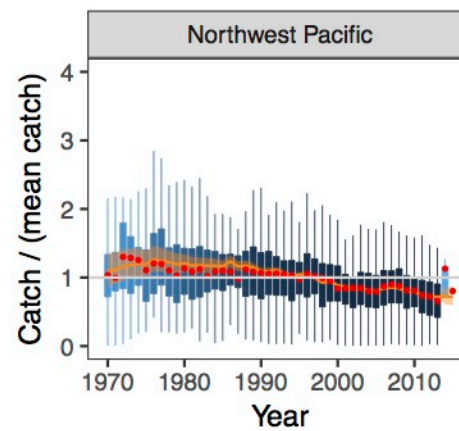
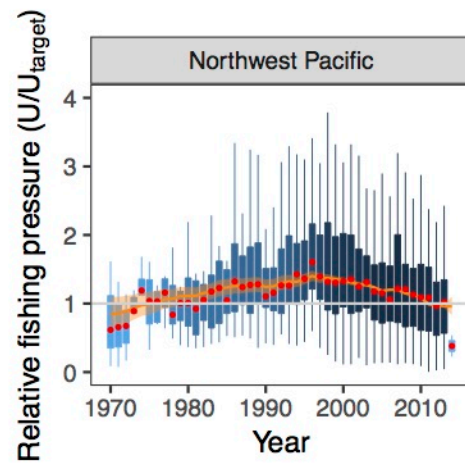
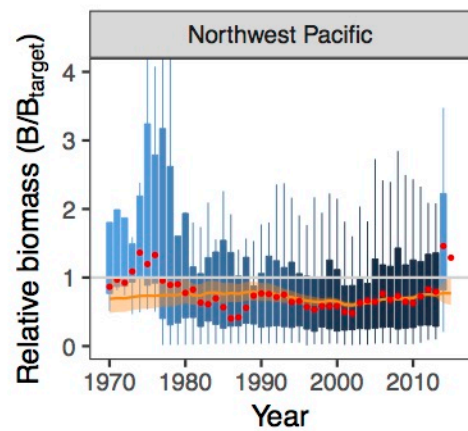
## Stocks with lowest average biomass



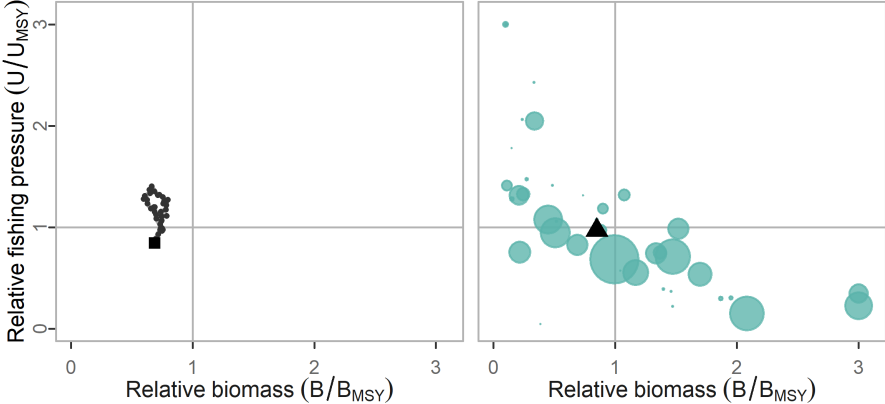


Summary method: • Median

— State-space model prediction

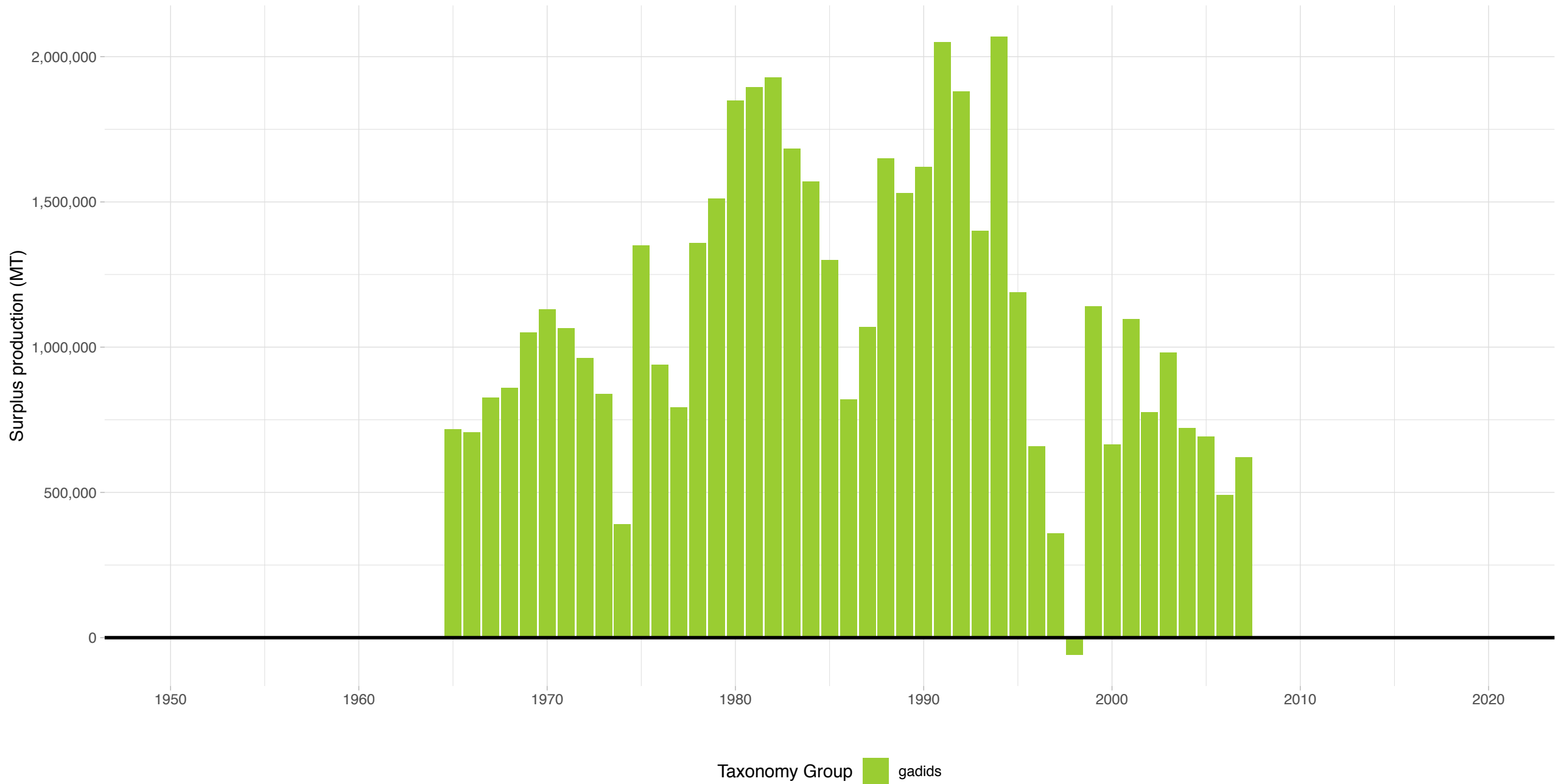


NW Pacific



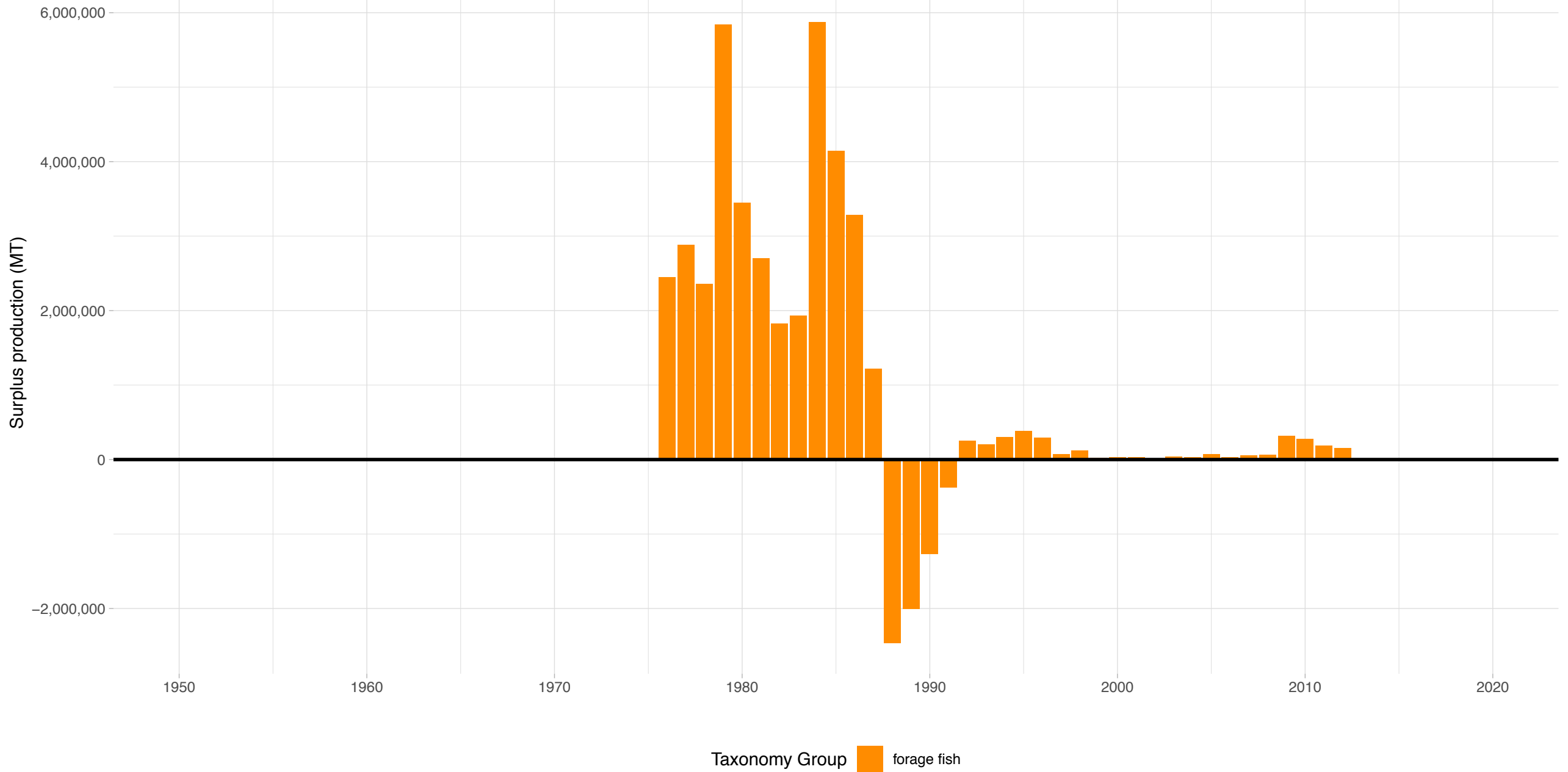
# Walleye pollock Northern Sea of Okhotsk – Northwest Pacific Region

Stock represents 15.9% of average absolute surplus production



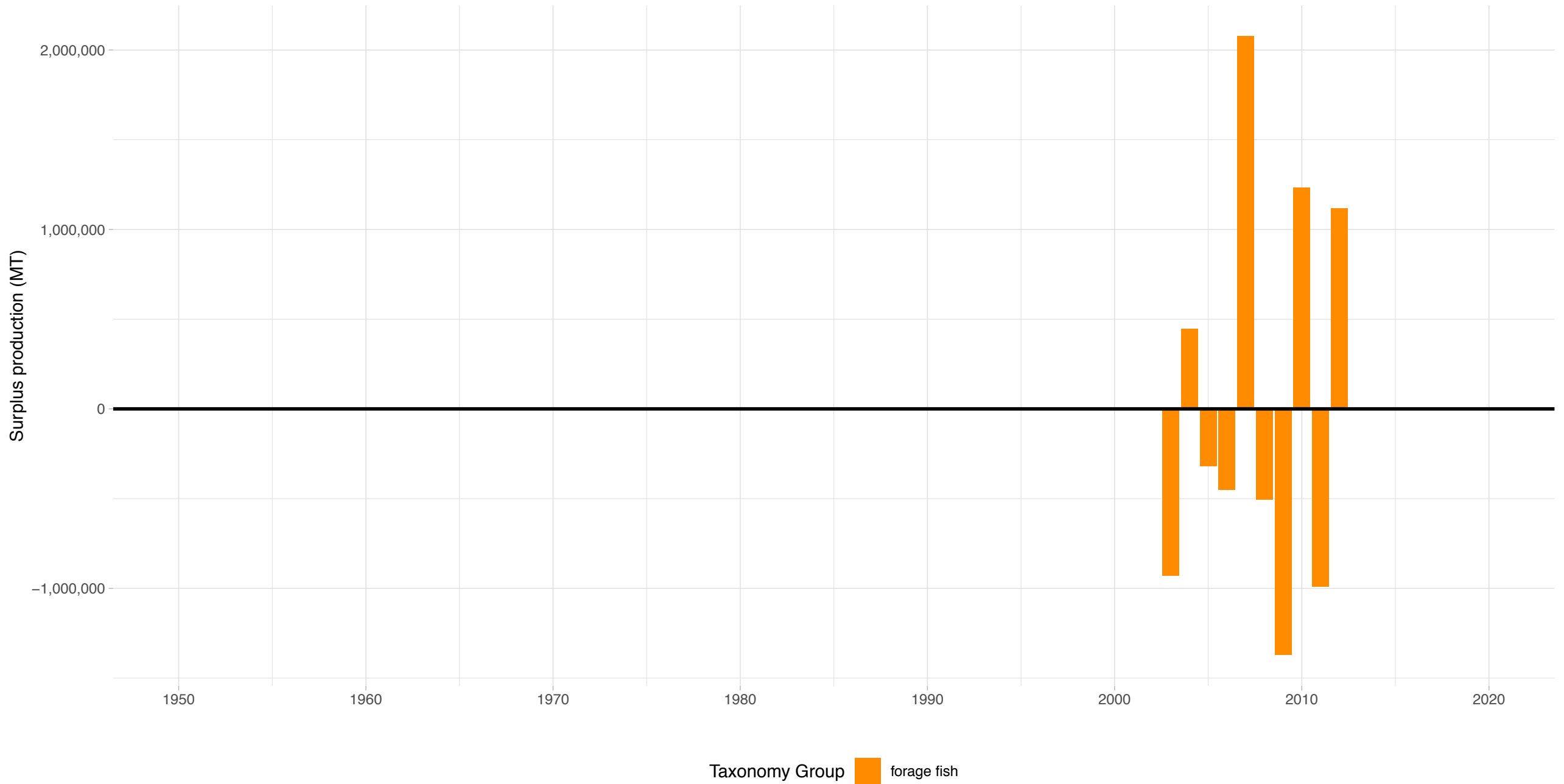
# Japanese sardine Pacific Coast of Japan – Northwest Pacific Region

Stock represents 17.9% of average absolute surplus production



# Pacific saury Northwest Pacific – Northwest Pacific Region

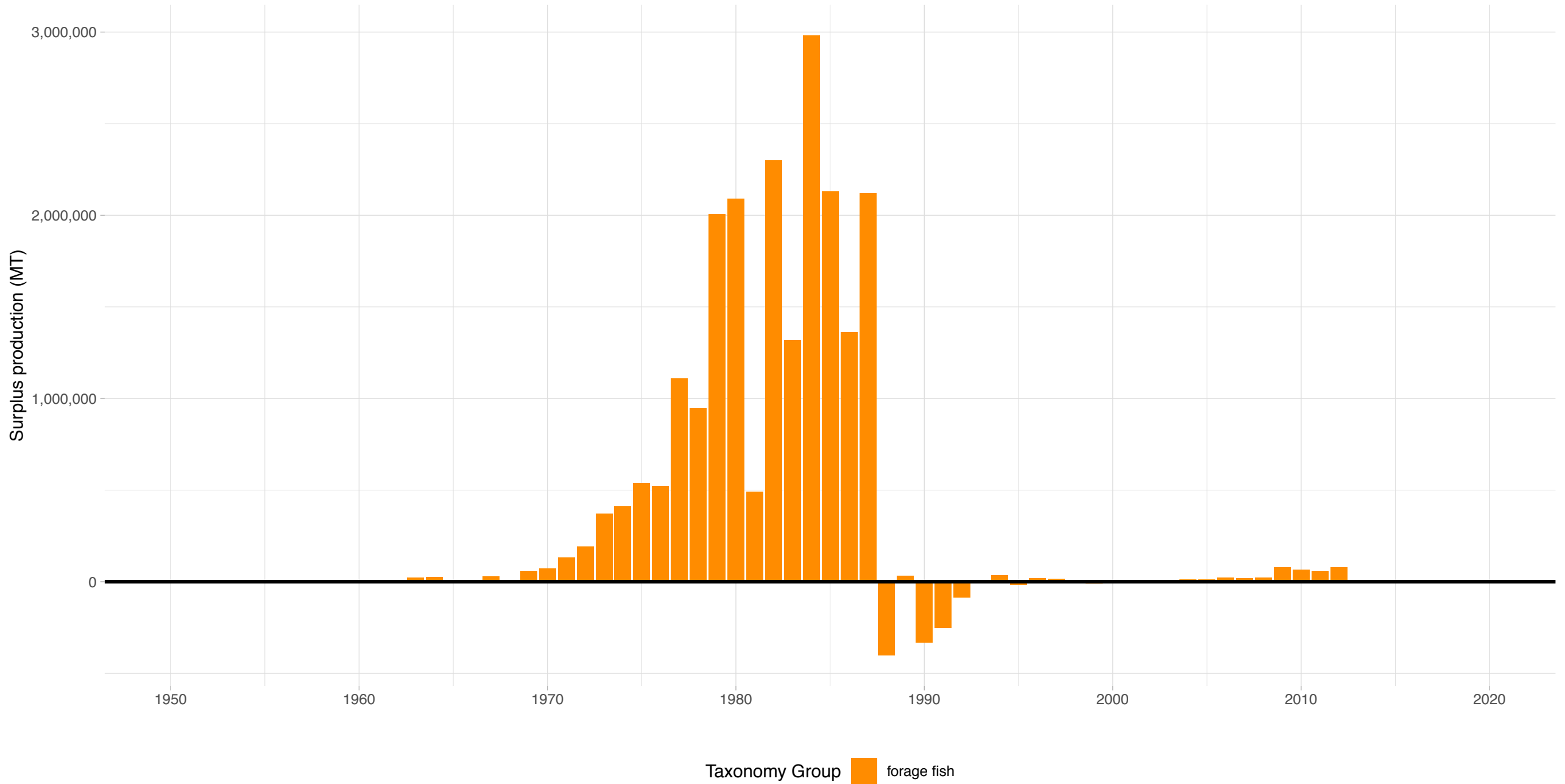
Stock represents 13.3% of average absolute surplus production



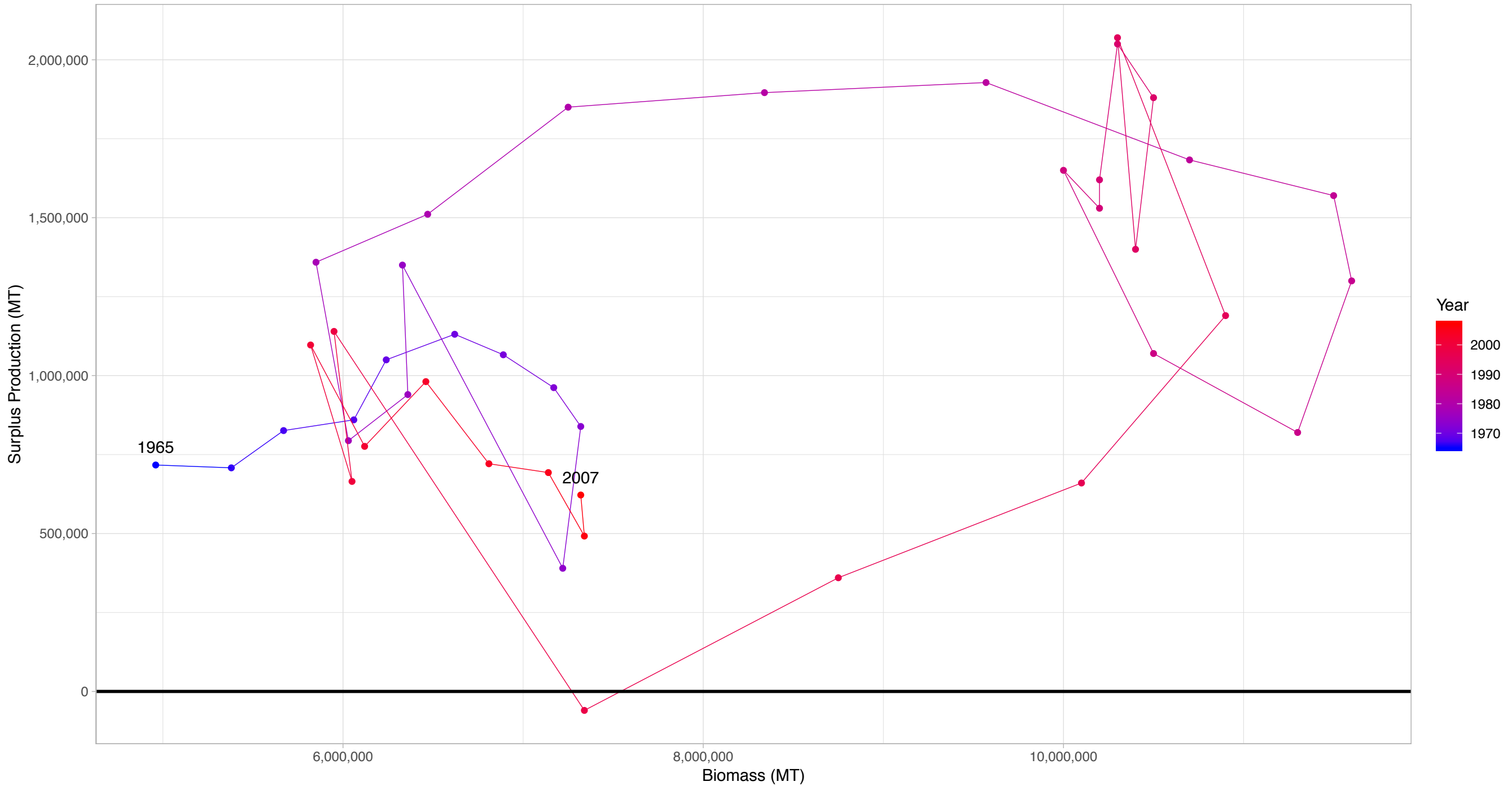


# Japanese sardine Tsushima Strait – Northwest Pacific Region

Stock represents 6.08% of average absolute surplus production

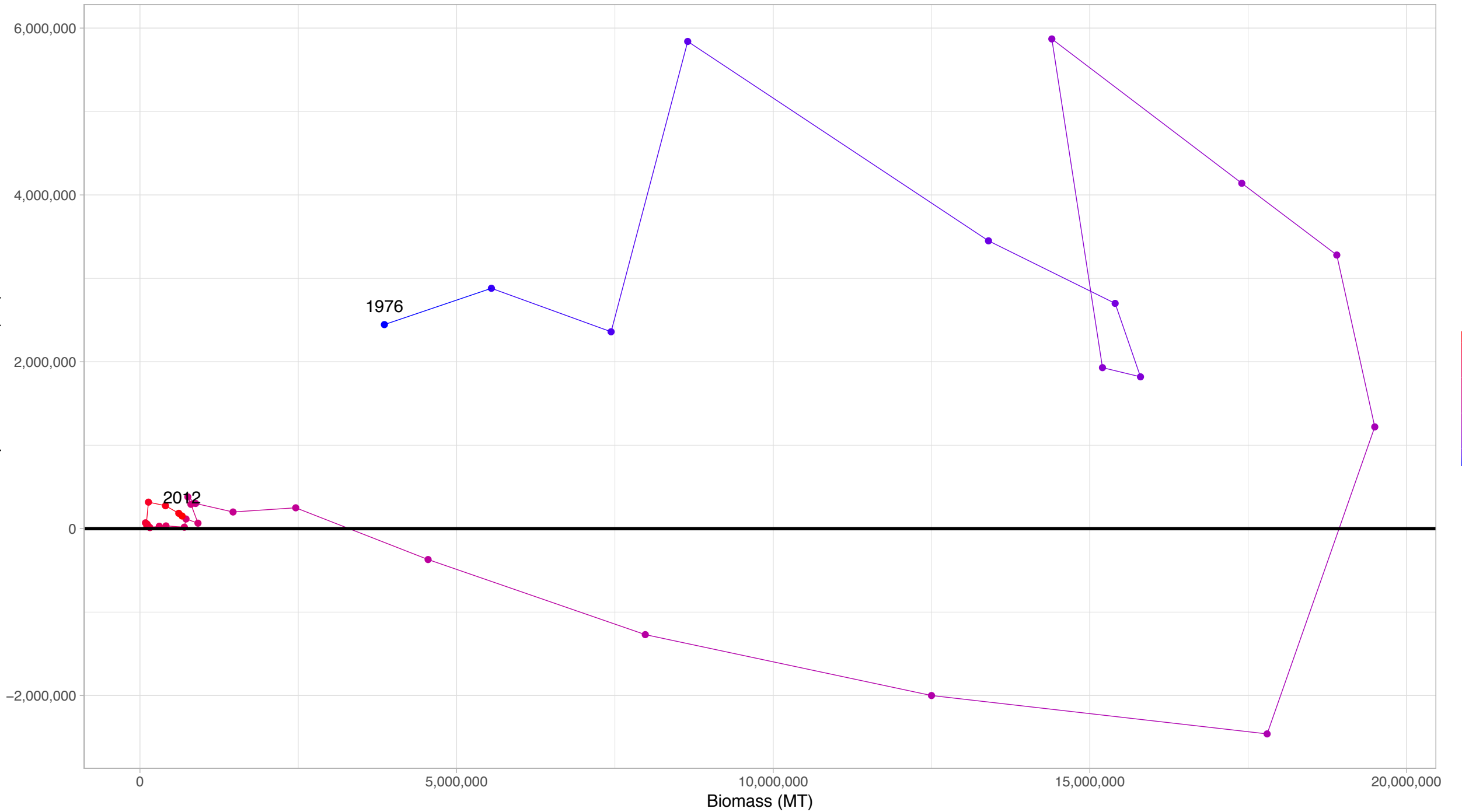


# Walleye pollock Northern Sea of Okhotsk in Northwest Pacific Region



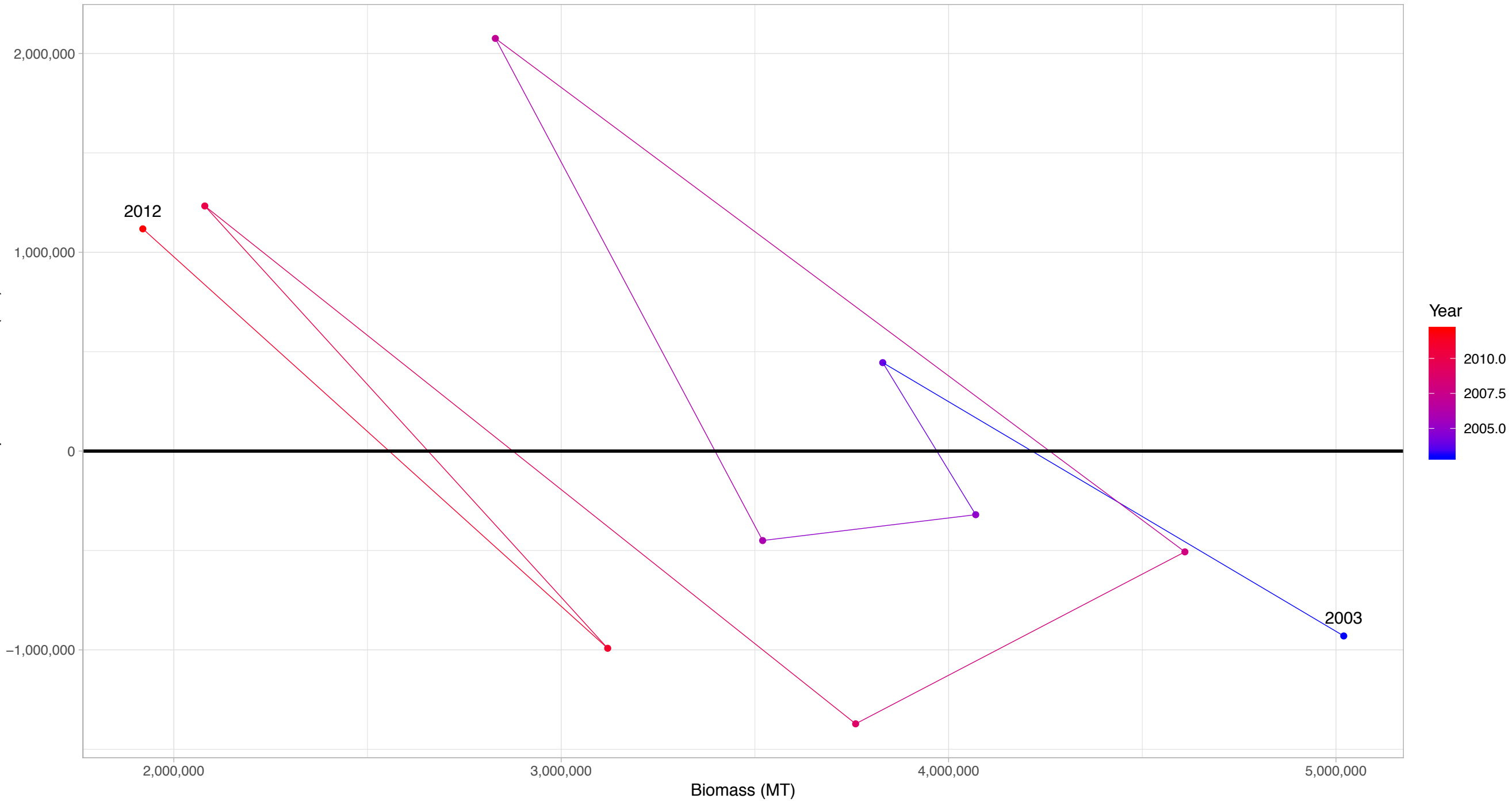
First and last years with recorded surplus production are labeled

# Japanese sardine Pacific Coast of Japan in Northwest Pacific Region



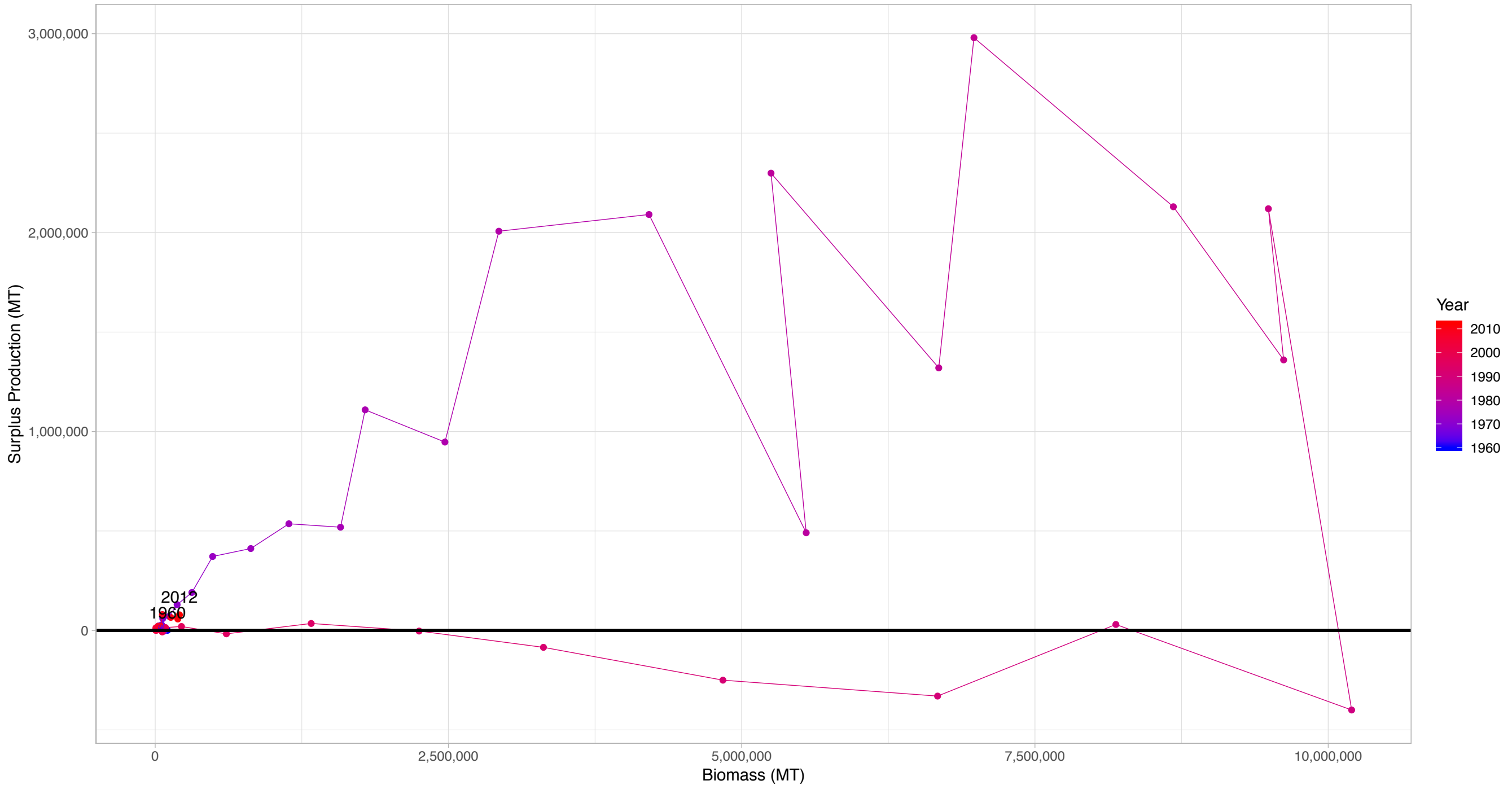
First and last years with recorded surplus production are labeled

# Pacific saury Northwest Pacific in Northwest Pacific Region



First and last years with recorded surplus production are labeled

# Japanese sardine Tsushima Strait in Northwest Pacific Region



First and last years with recorded surplus production are labeled