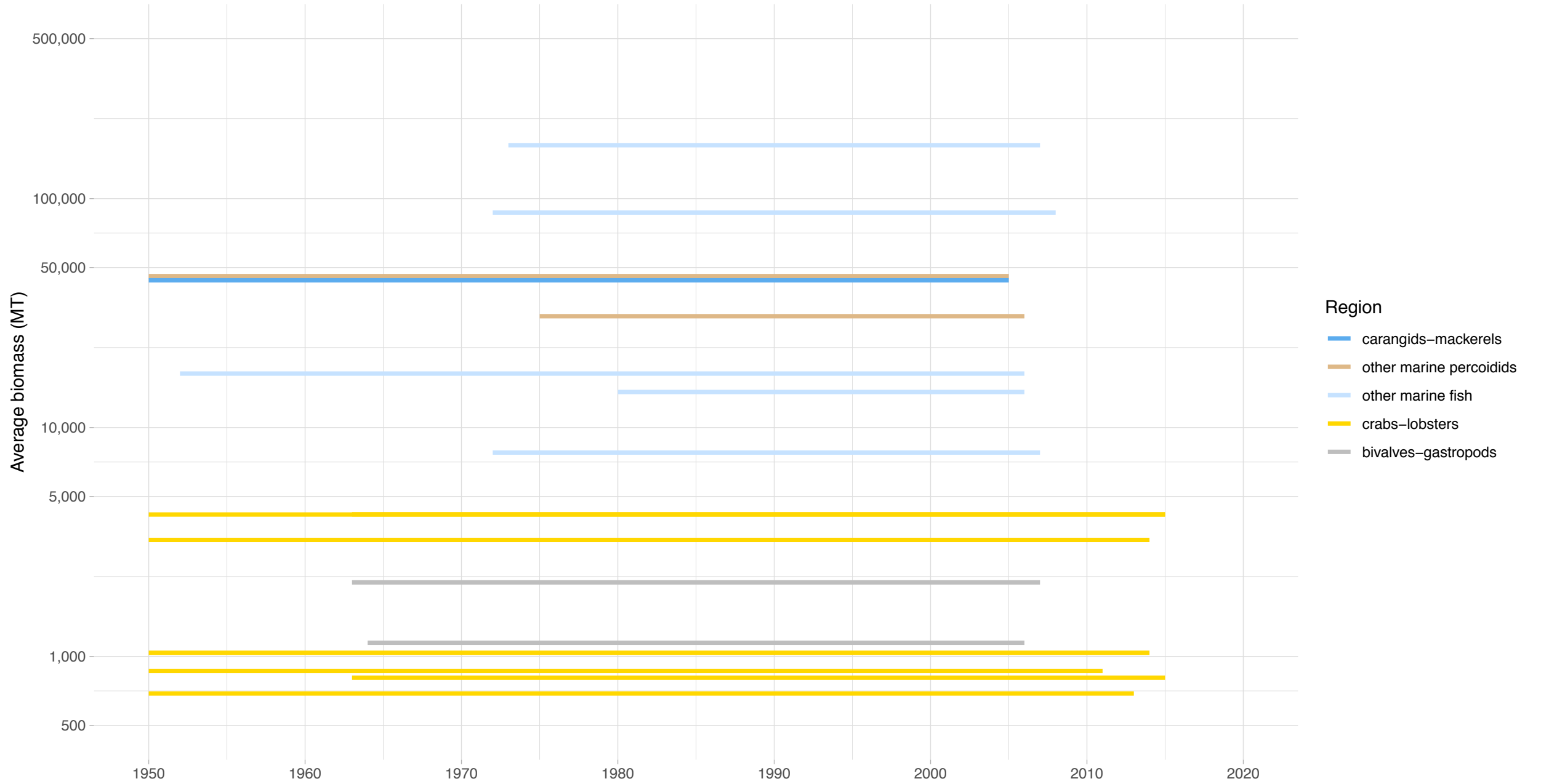
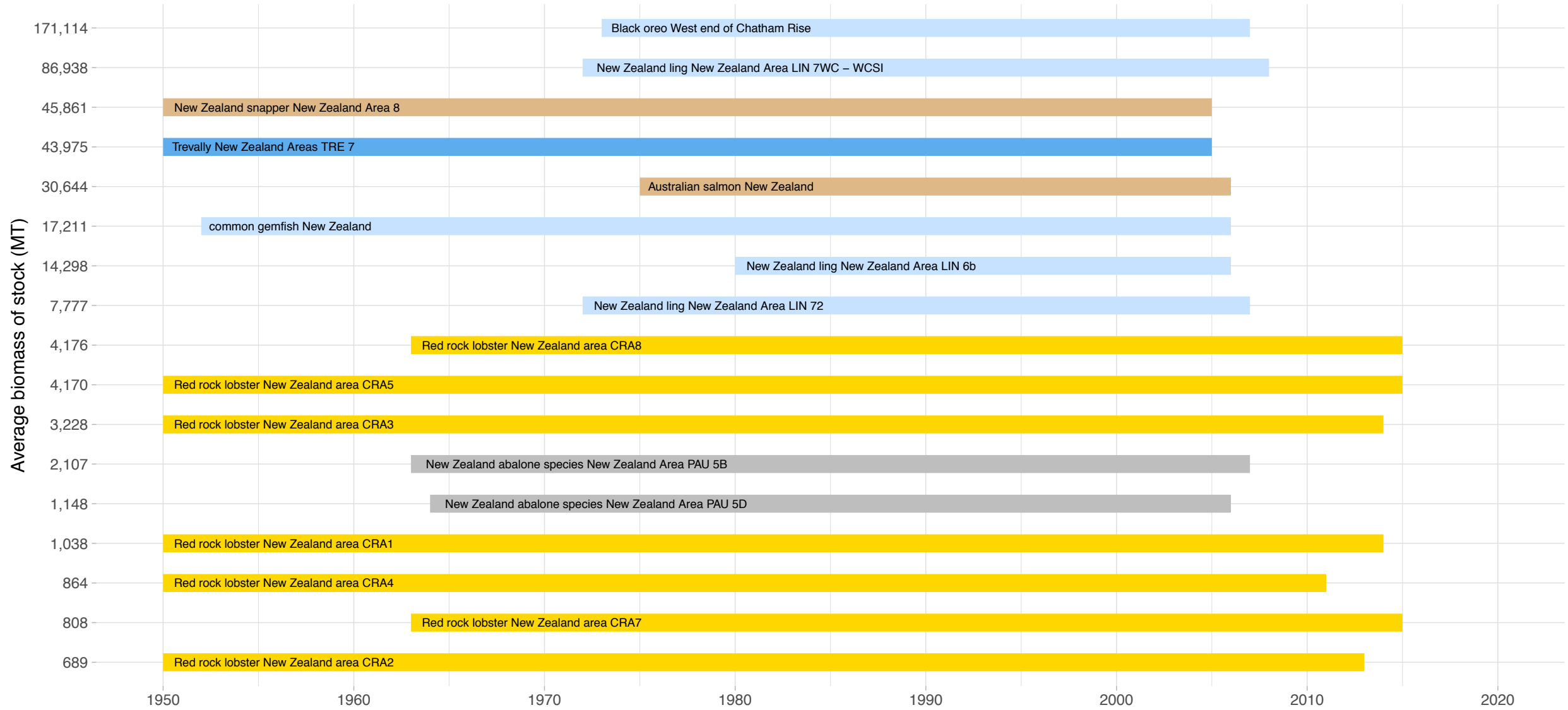


Biomass Coverage in New Zealand Region




Biomass Coverage Over Time in New Zealand Region


Stocks ordered from lowest to highest average biomass

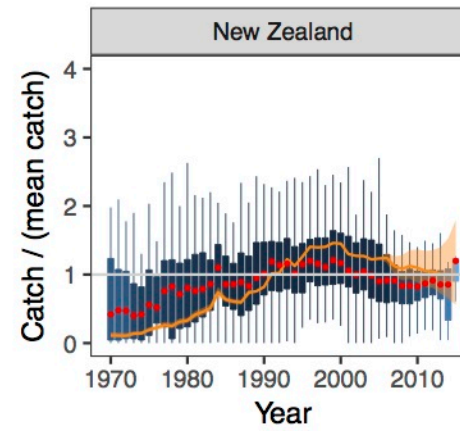
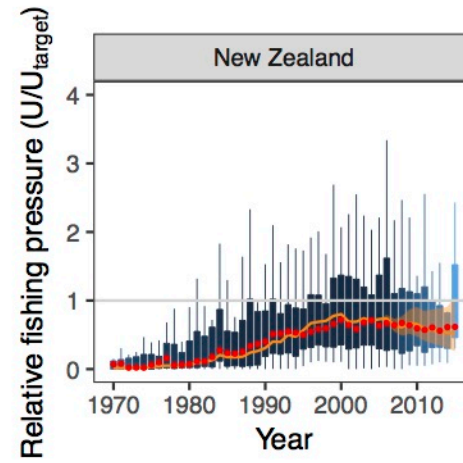
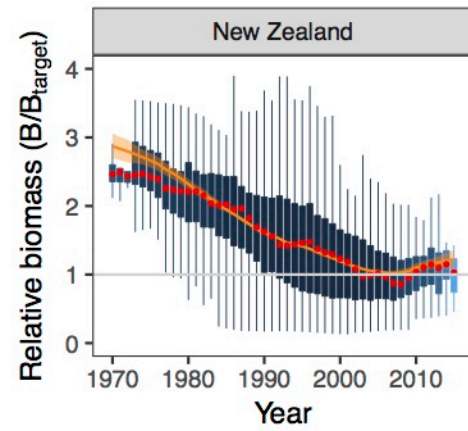


Region ■ carangids-mackerels ■ other marine percoidids ■ other marine fish ■ crabs-lobsters ■ bivalves-gastropods

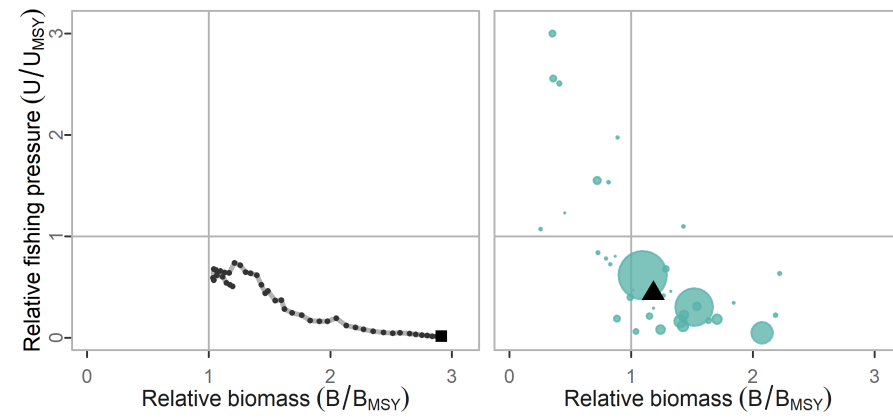


Summary method:  Median

 State-space model prediction

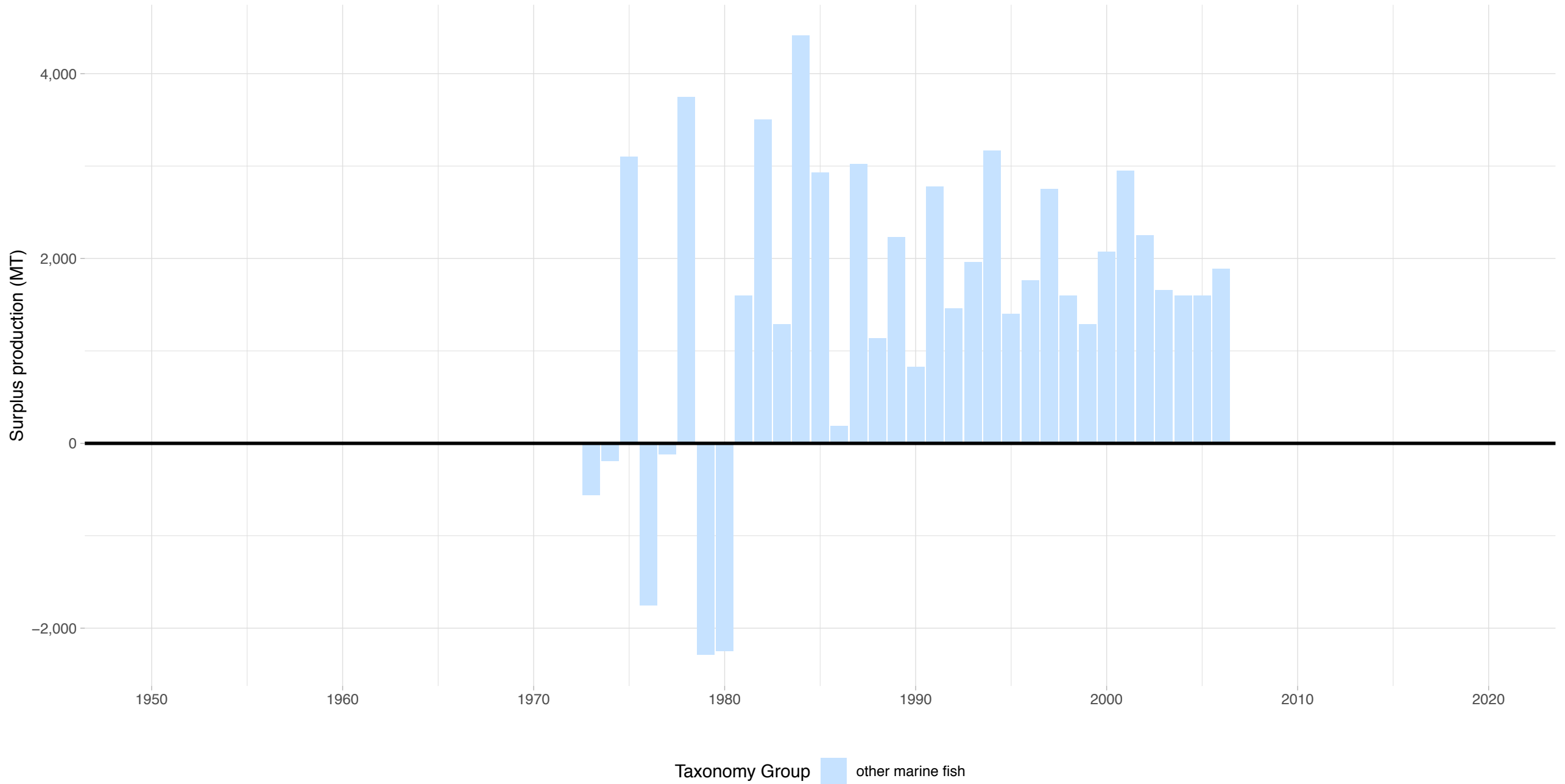


New Zealand



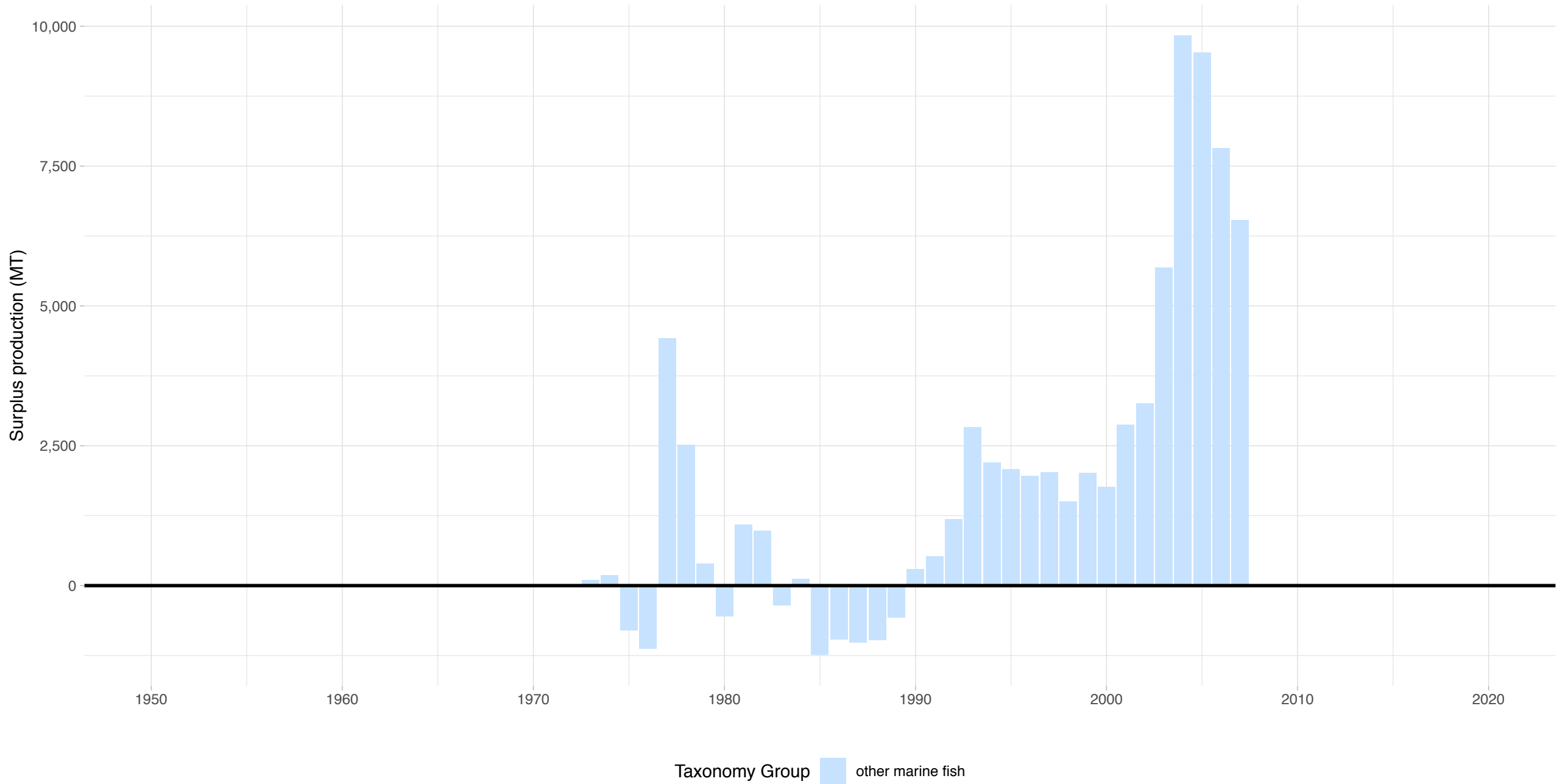
Black oreo West end of Chatham Rise – New Zealand Region

Stock represents 15.3% of average absolute surplus production



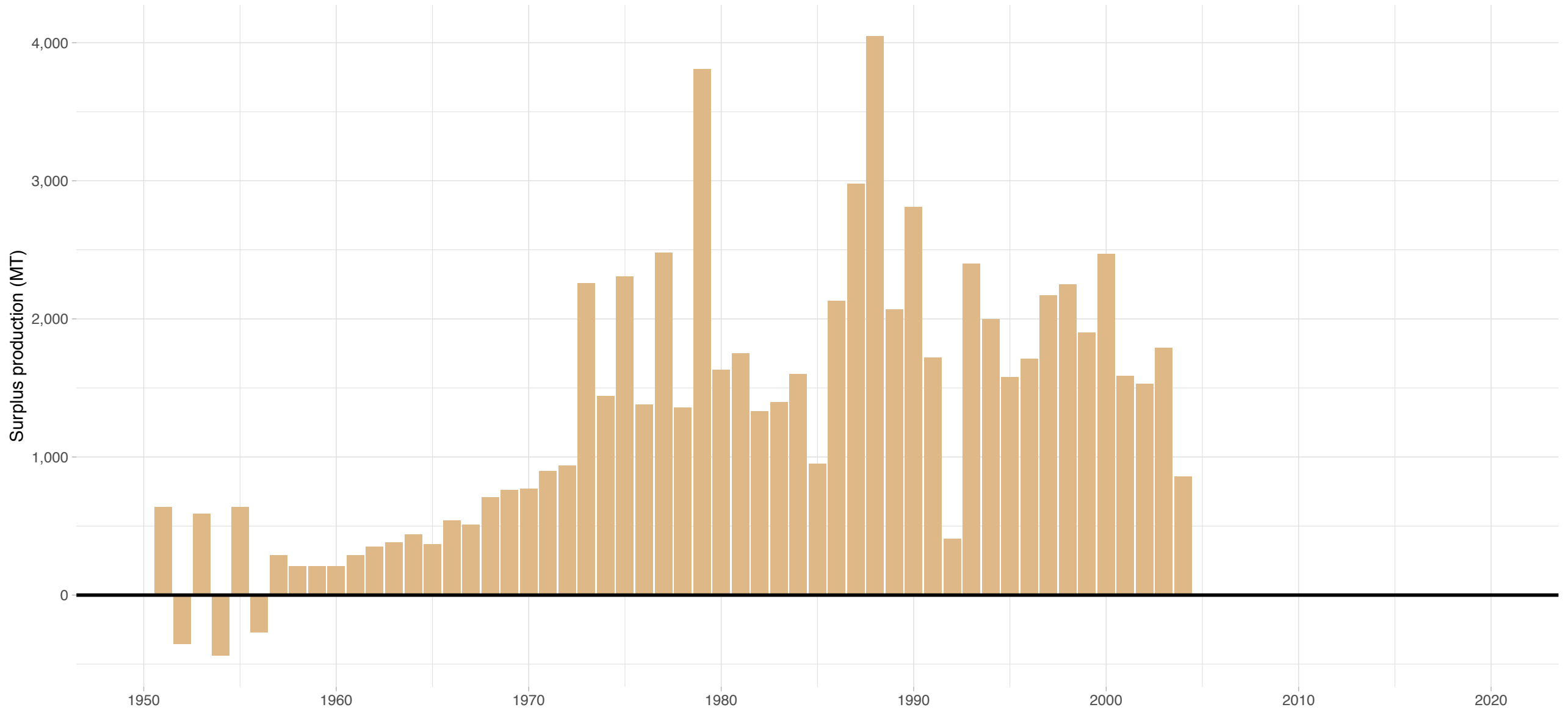
New Zealand ling New Zealand Area LIN 7WC – WCSI – New Zealand Region

Stock represents 17.4% of average absolute surplus production



New Zealand snapper New Zealand Area 8 – New Zealand Region

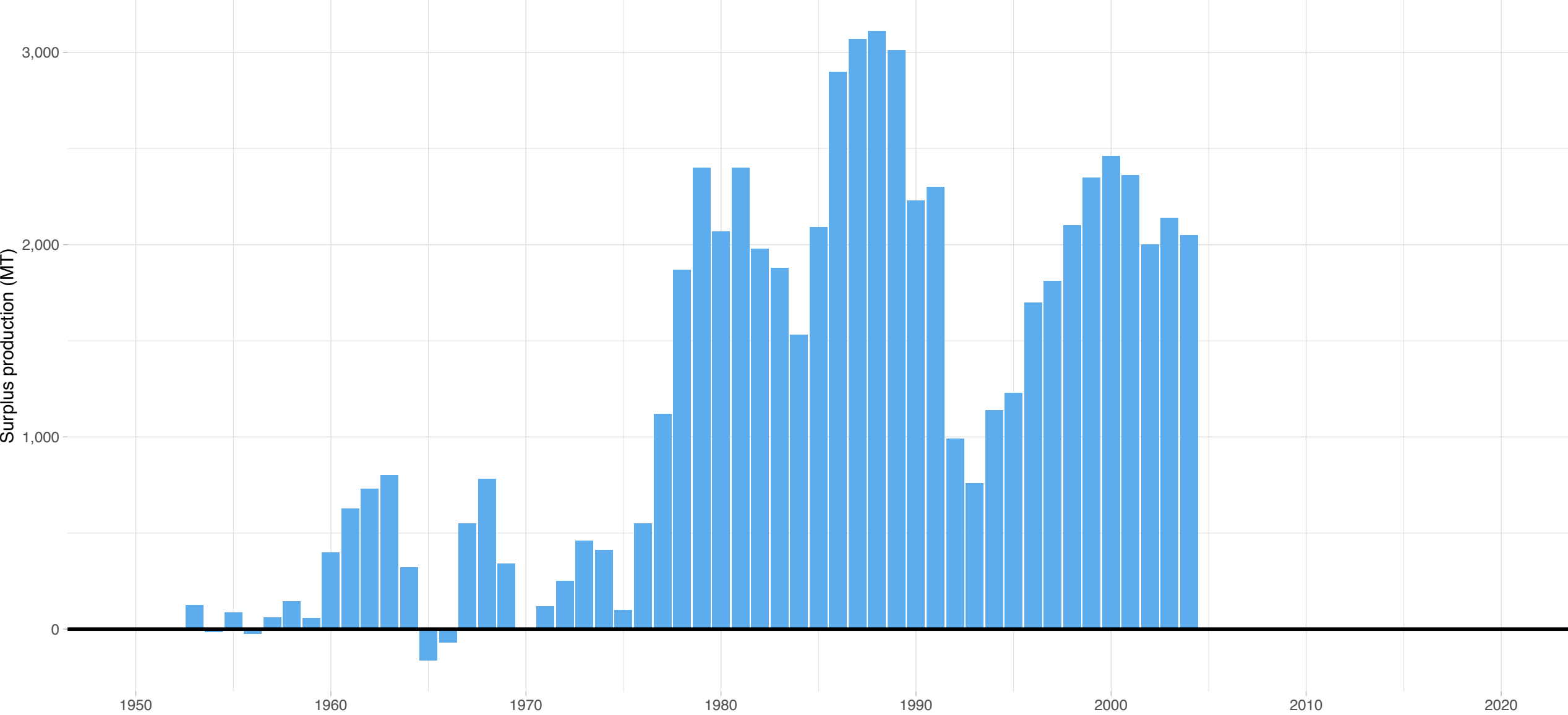
Stock represents 8.30% of average absolute surplus production



Taxonomy Group other marine percoidids

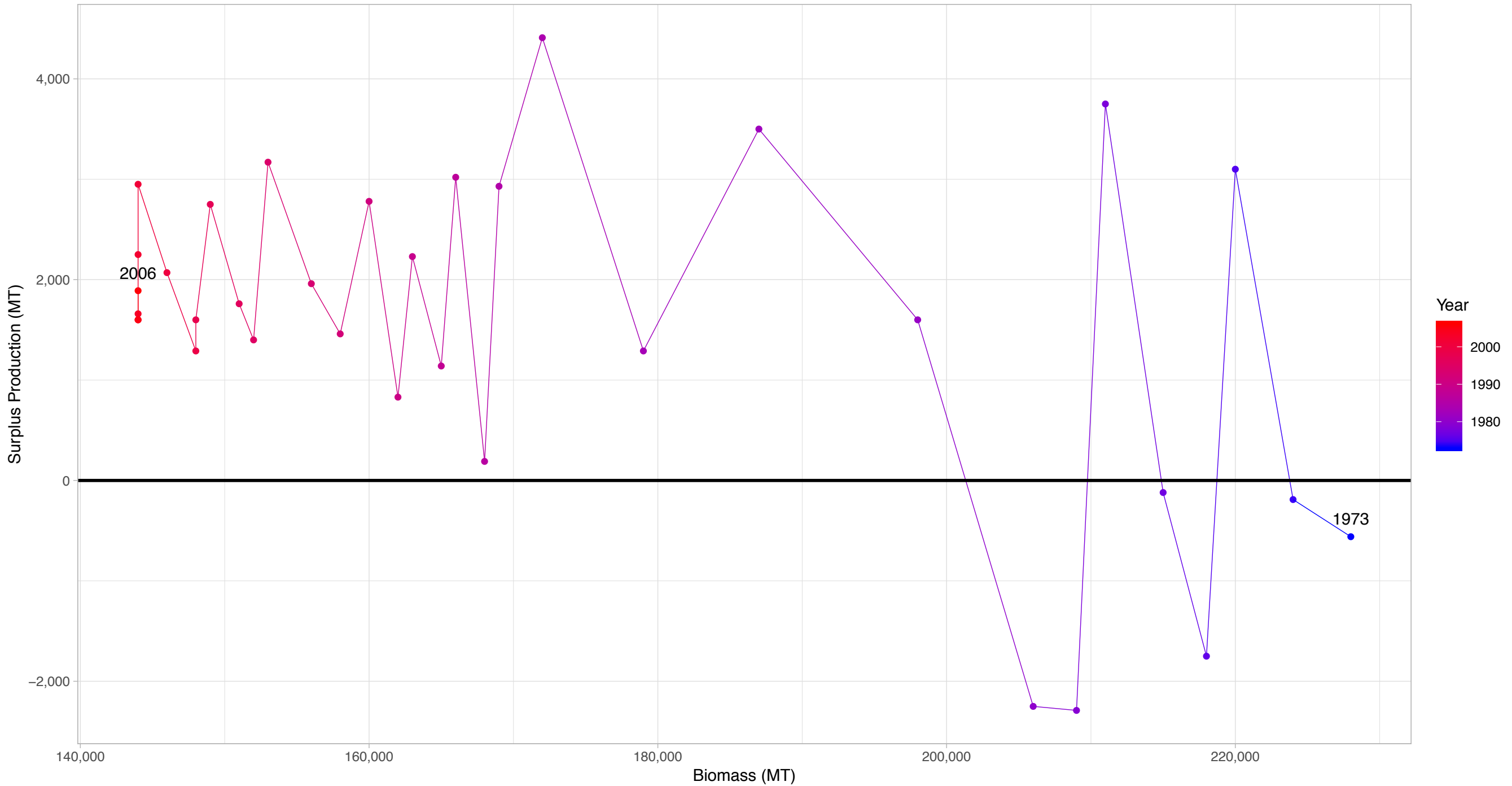
Trevally New Zealand Areas TRE 7 – New Zealand Region

Stock represents 8.16% of average absolute surplus production



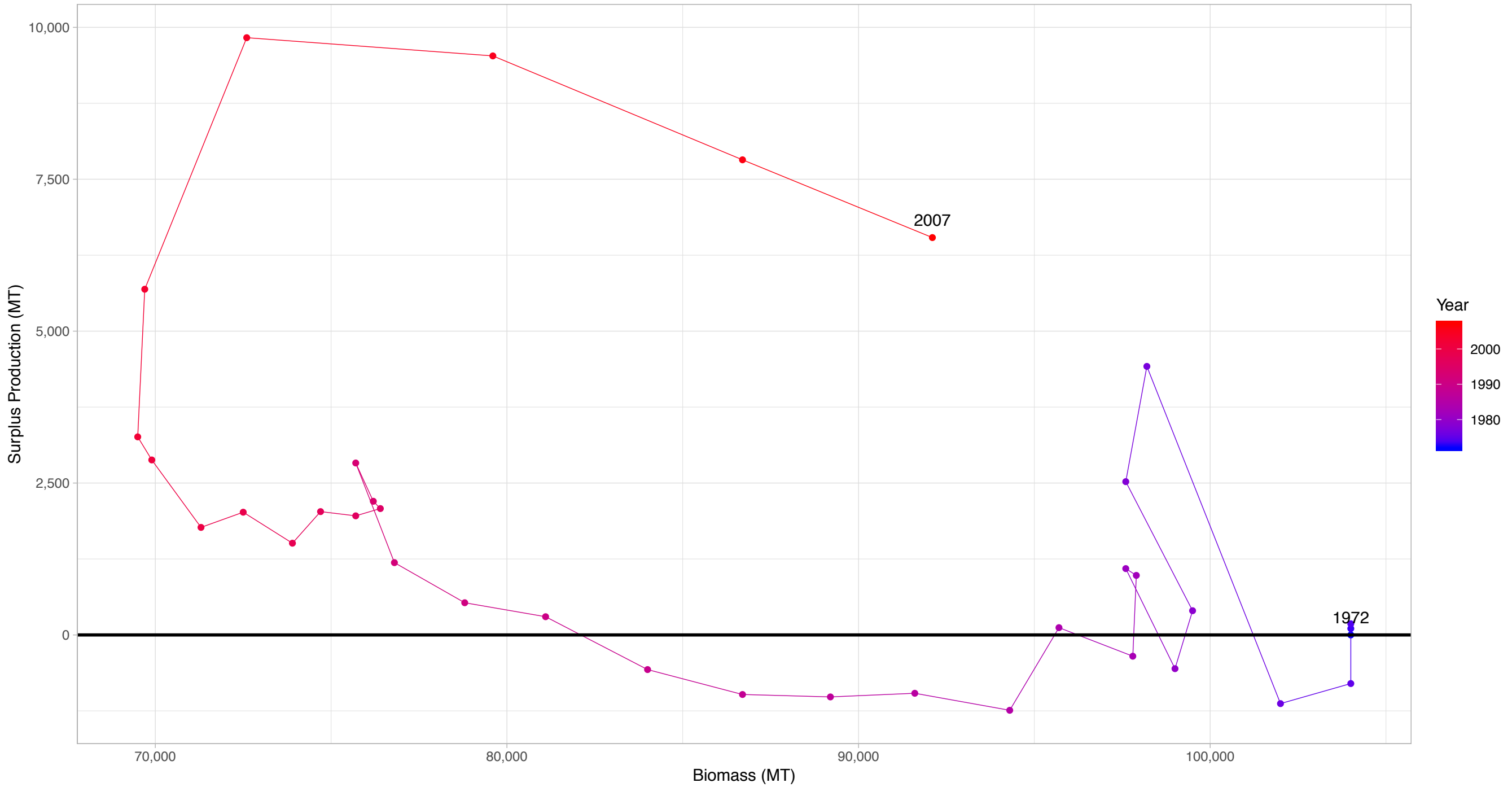
Taxonomy Group ■ carangids-mackerels

Black oreo West end of Chatham Rise in New Zealand Region



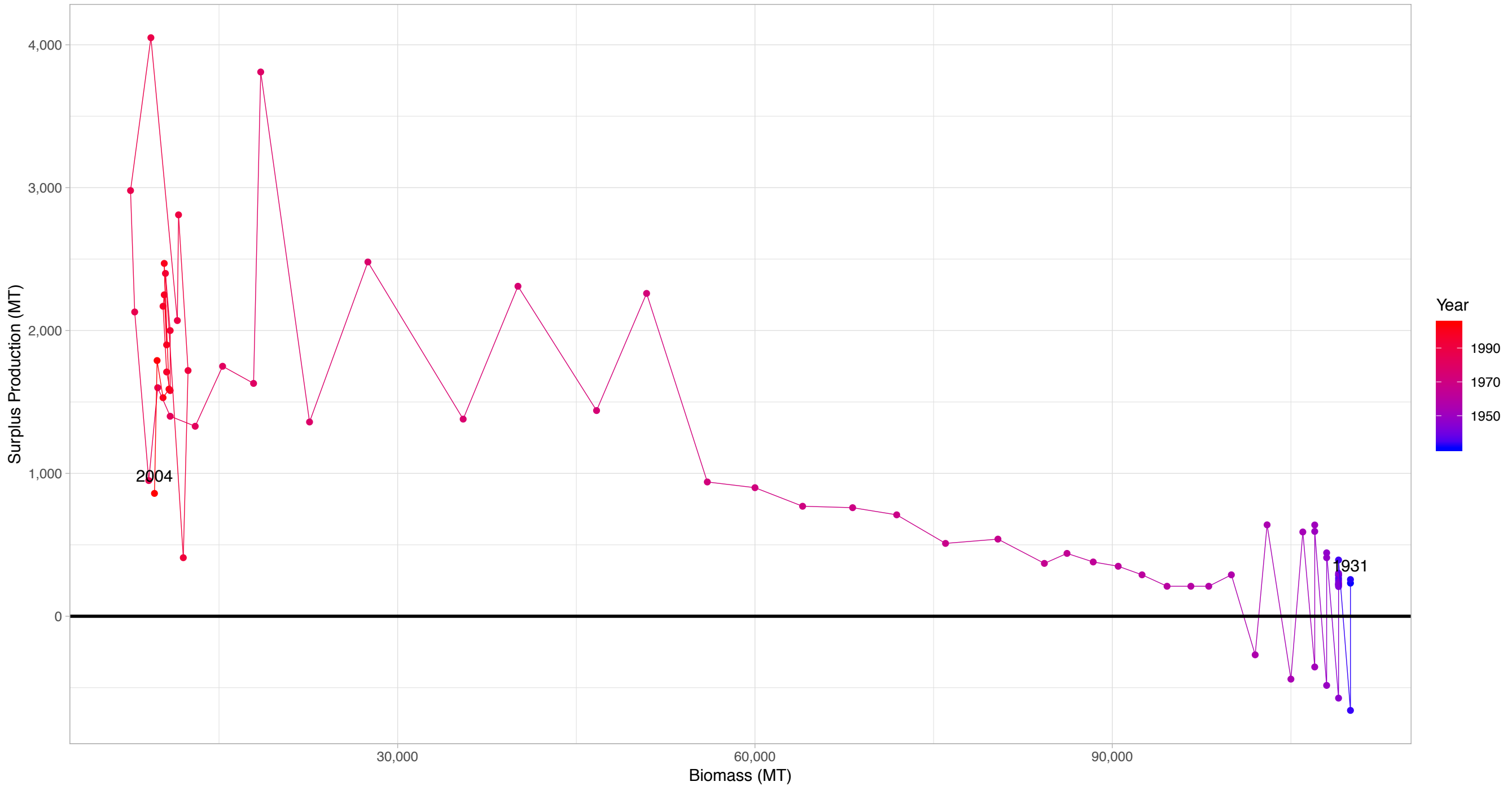
First and last years with recorded surplus production are labeled

New Zealand ling New Zealand Area LIN 7WC – WCSI in New Zealand Region



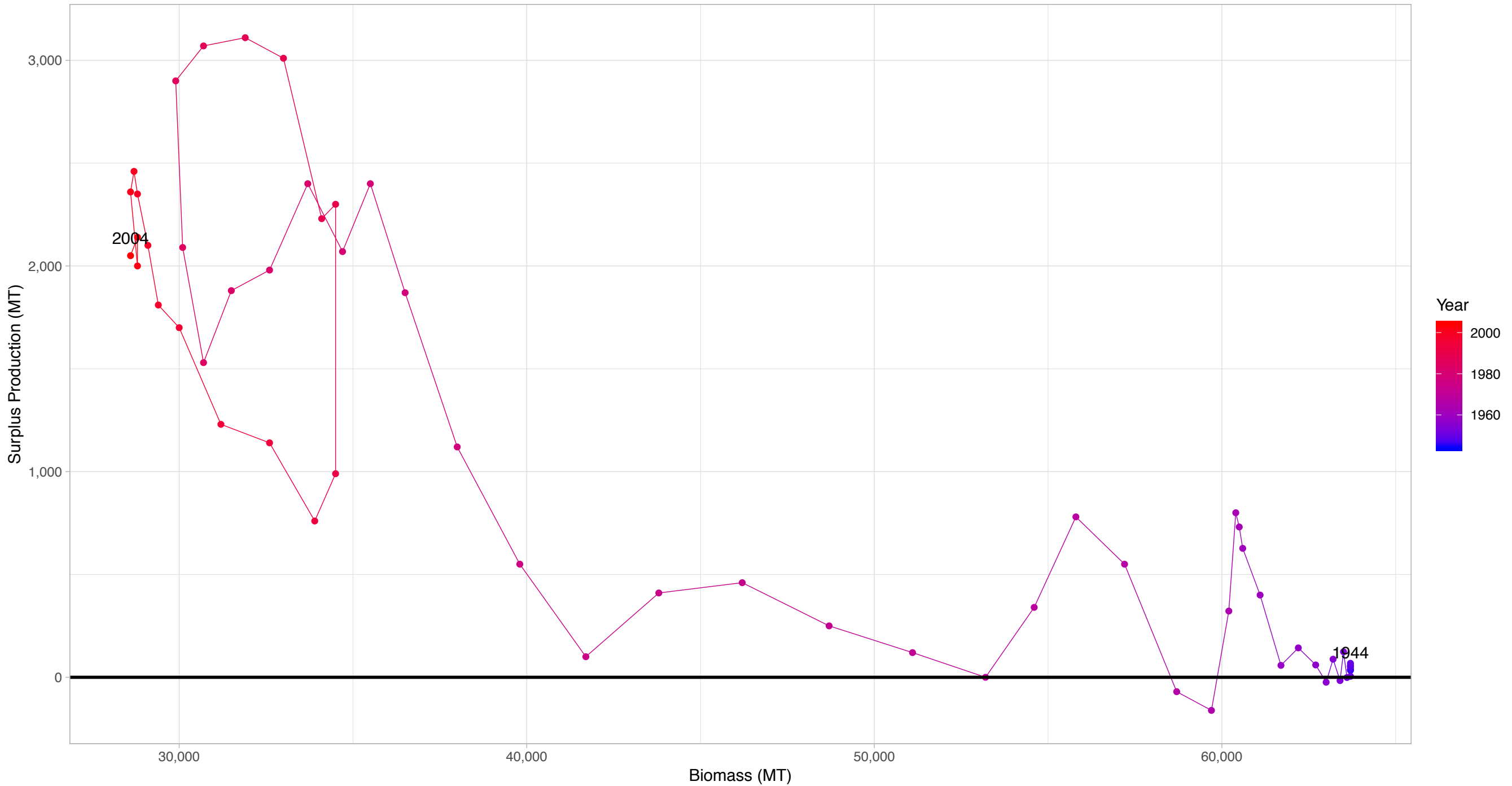
First and last years with recorded surplus production are labeled

New Zealand snapper New Zealand Area 8 in New Zealand Region



First and last years with recorded surplus production are labeled

Trevally New Zealand Areas TRE 7 in New Zealand Region



First and last years with recorded surplus production are labeled