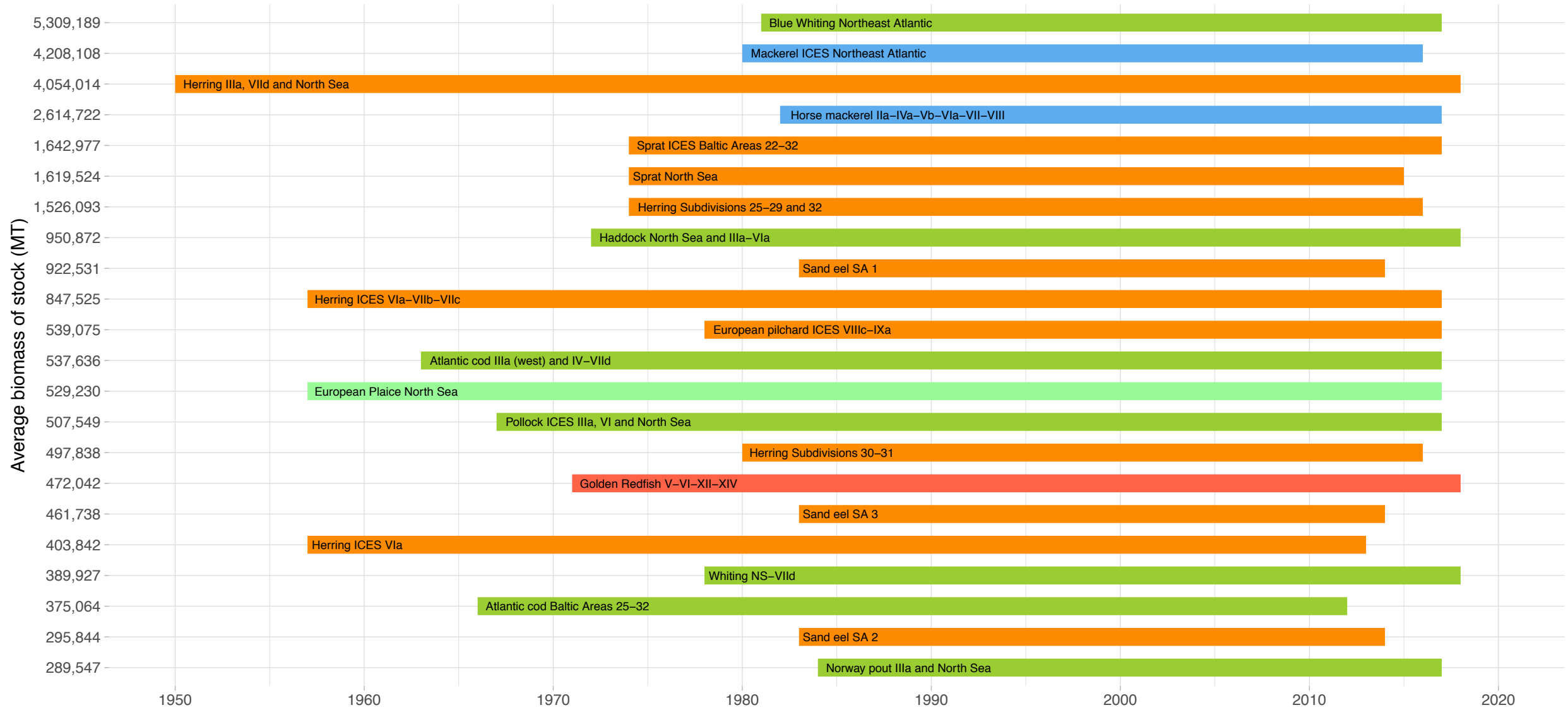




# Biomass Coverage Over Time in European Union (non Mediterranean) Region

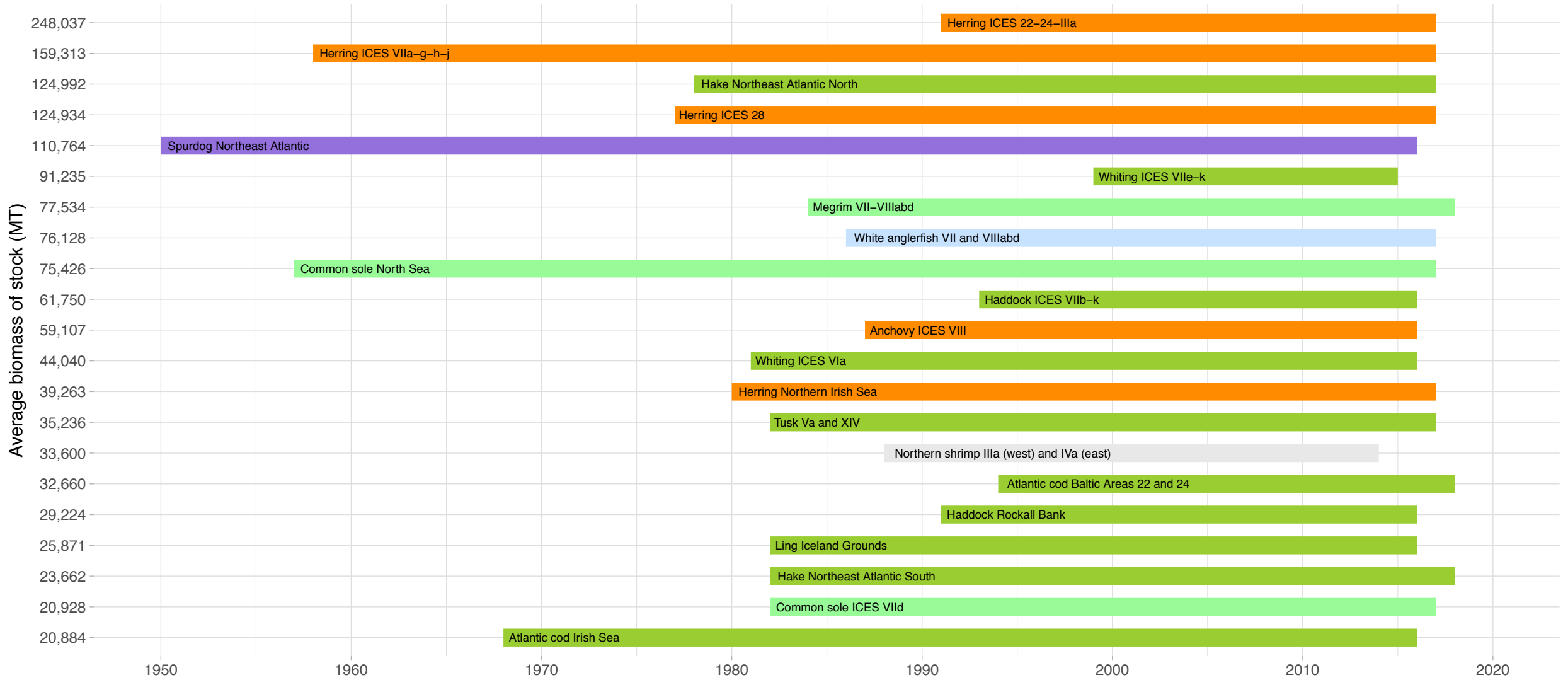
## 1/3 of Stocks with highest average biomass



Region ■ gadids ■ pleuronectids ■ sebastids ■ forage fish ■ carangids-mackerels

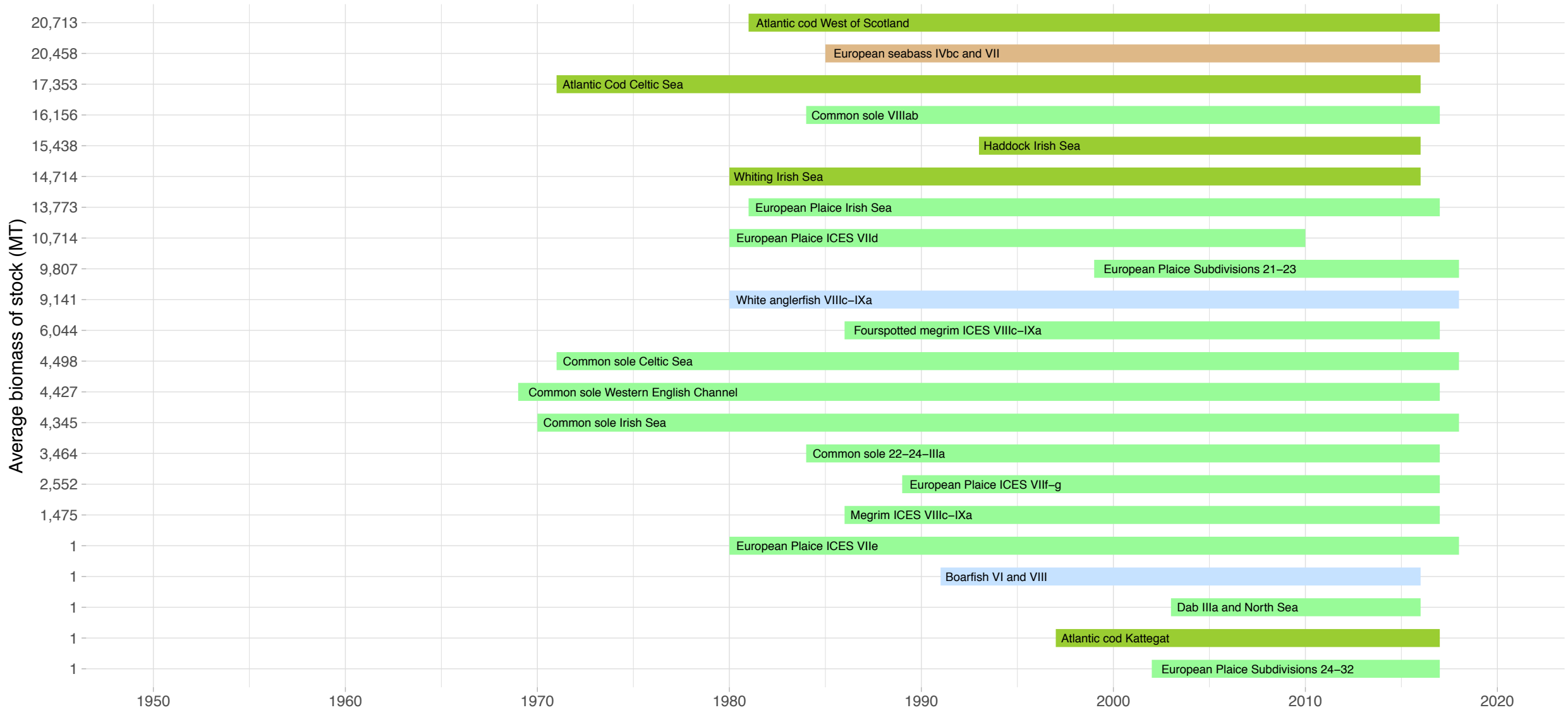
# Biomass Coverage Over Time in European Union (non Mediterranean) Region

## 1/3 of Stocks with medium average biomass



# Biomass Coverage Over Time in European Union (non Mediterranean) Region

## 1/3 of Stocks with lowest average biomass

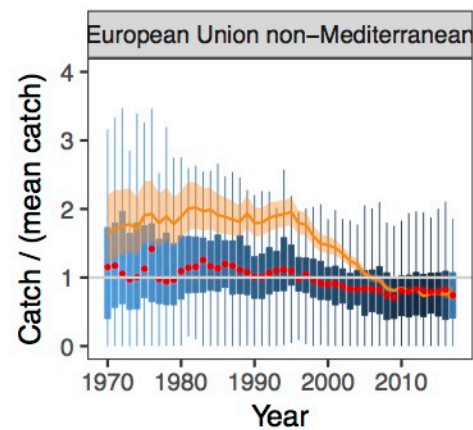
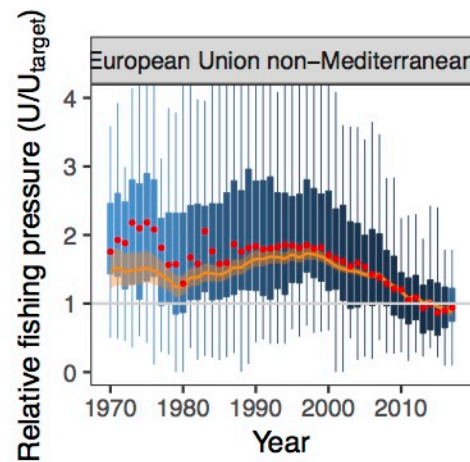
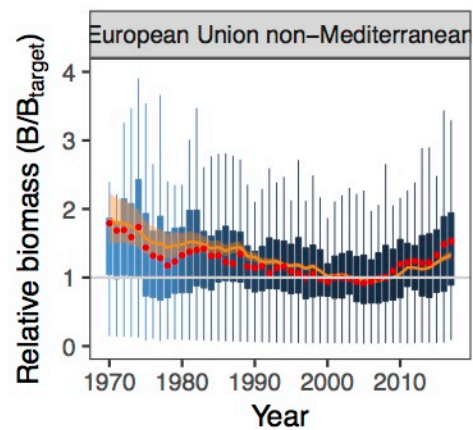


Region ■ gadids ■ pleuronectids ■ other marine percoidids ■ other marine fish

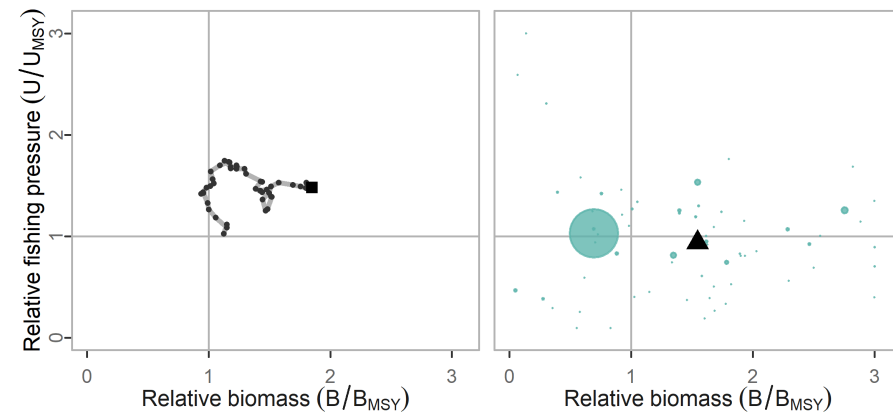


Summary method: • Median

— State-space model prediction

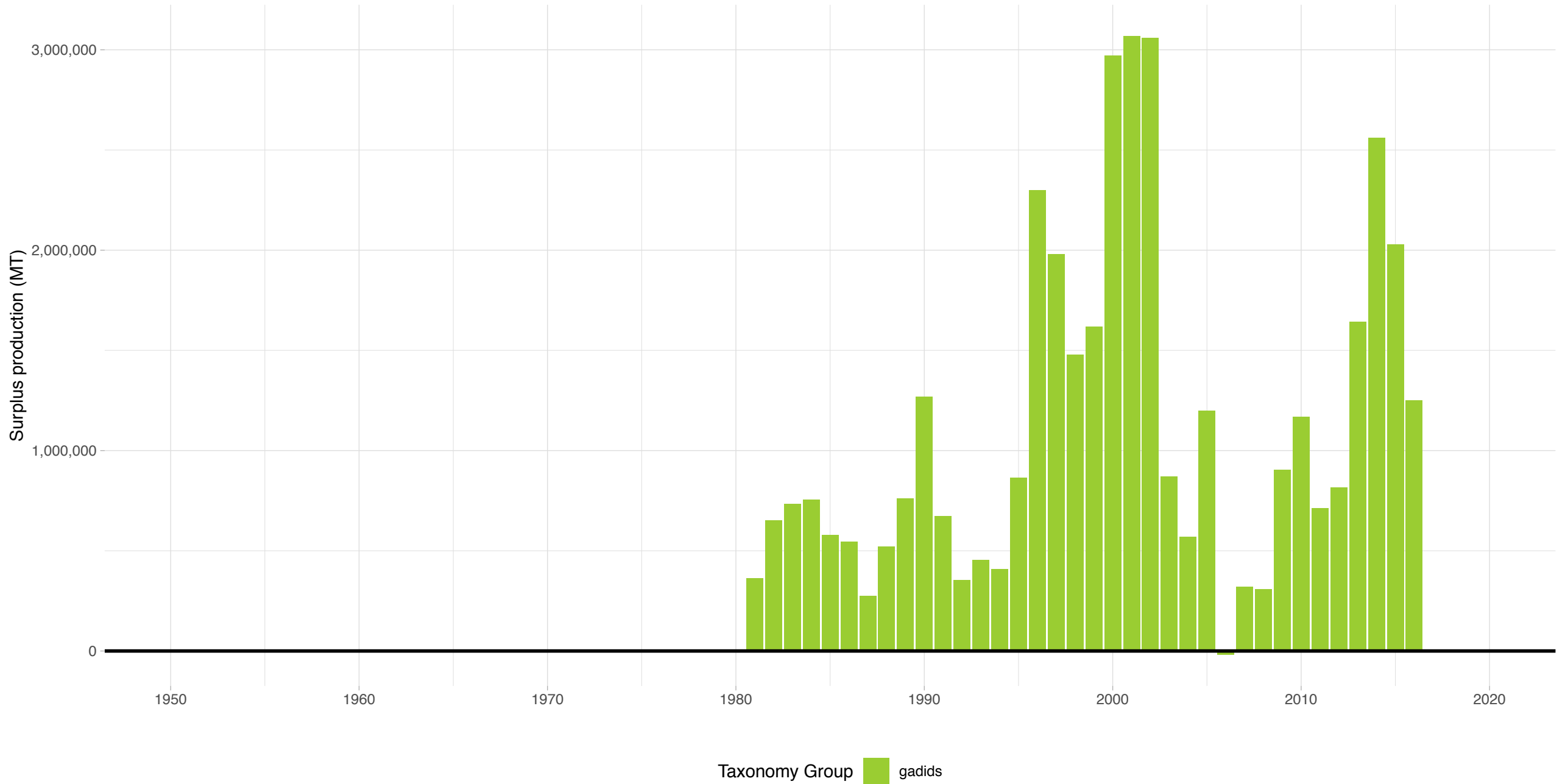


EU non-Mediterranean



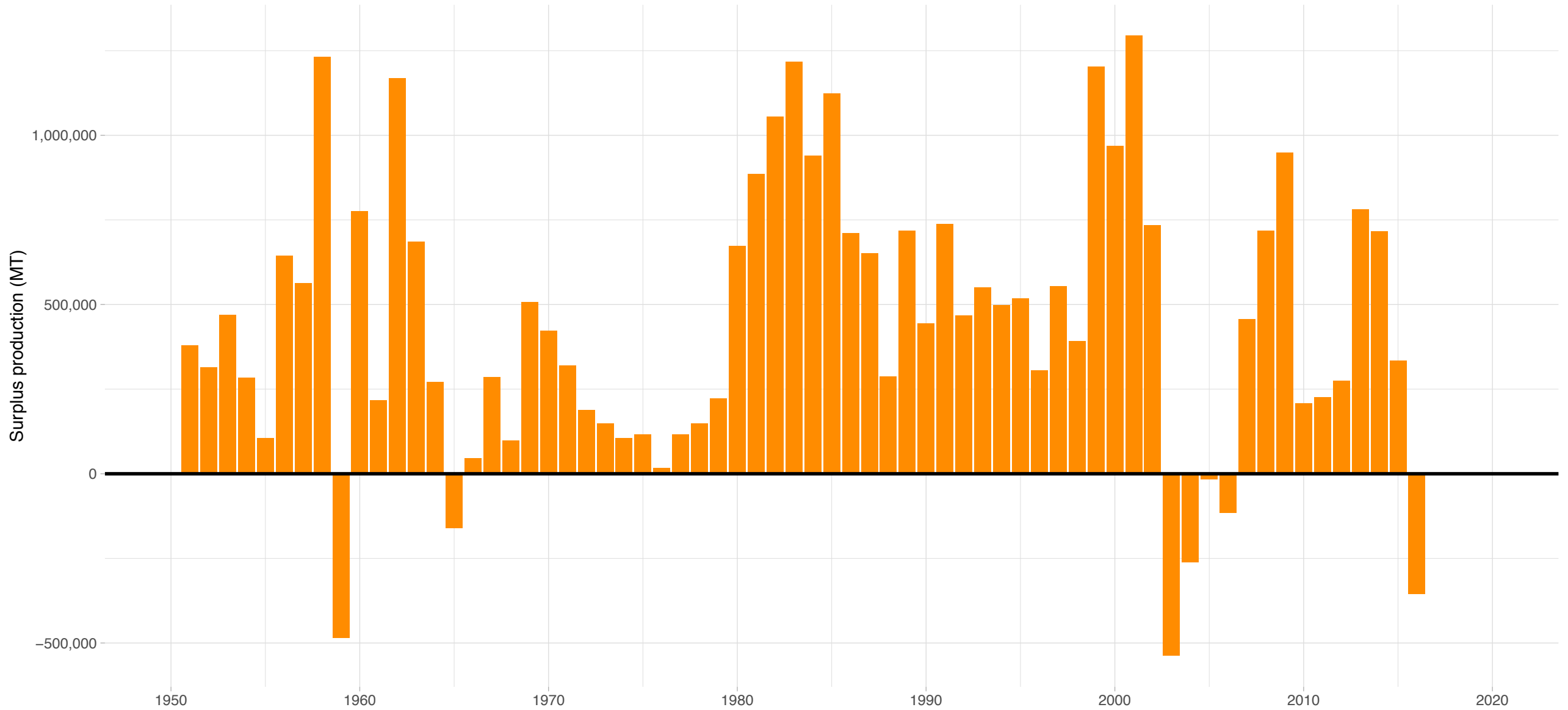
# Blue Whiting Northeast Atlantic – European Union (non Mediterranean) Region

Stock represents 16.1% of average absolute surplus production



# Herring IIIa, VIId and North Sea – European Union (non Mediterranean) Region

Stock represents 7.32% of average absolute surplus production

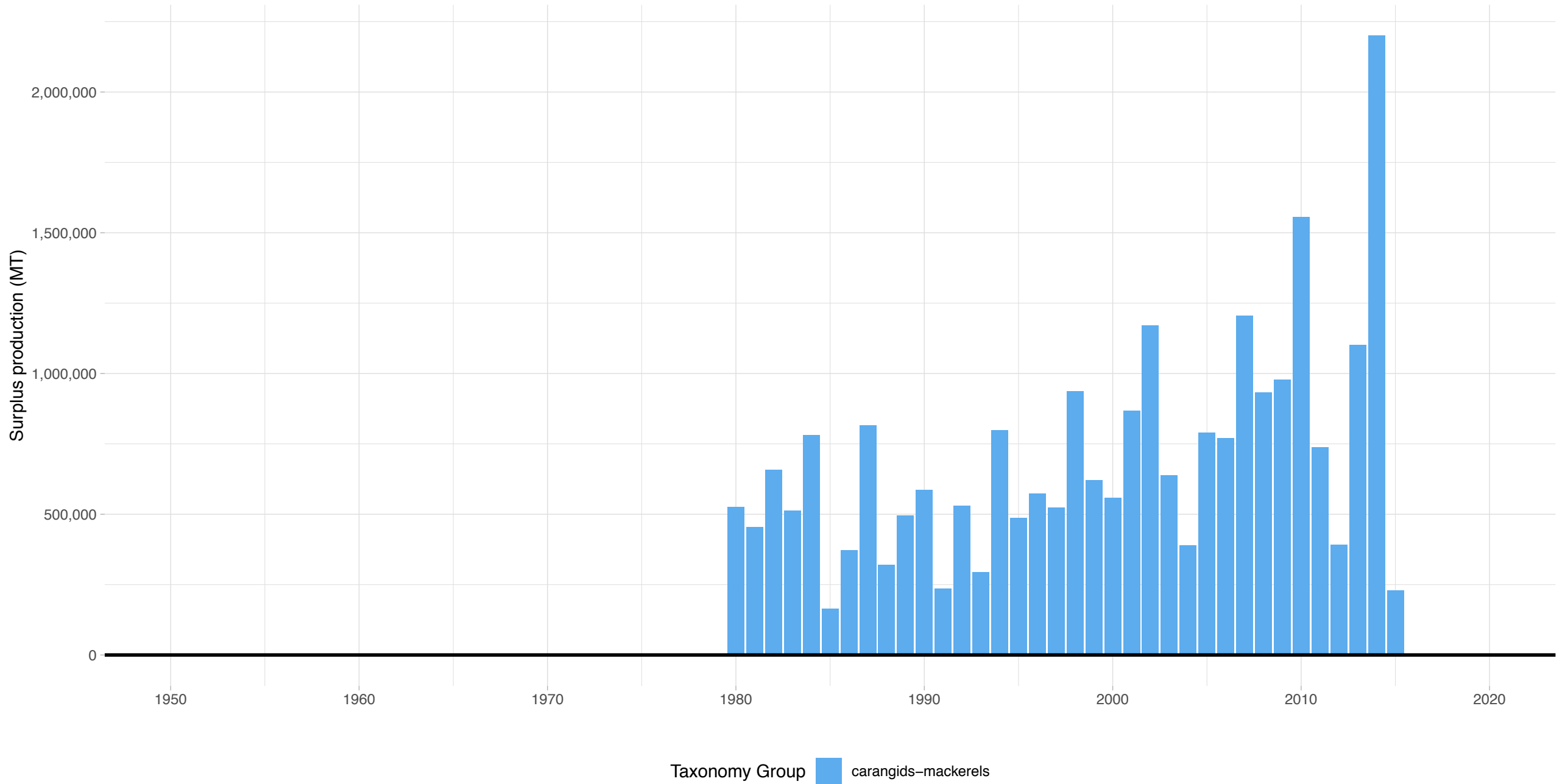


Taxonomy Group ■ forage fish



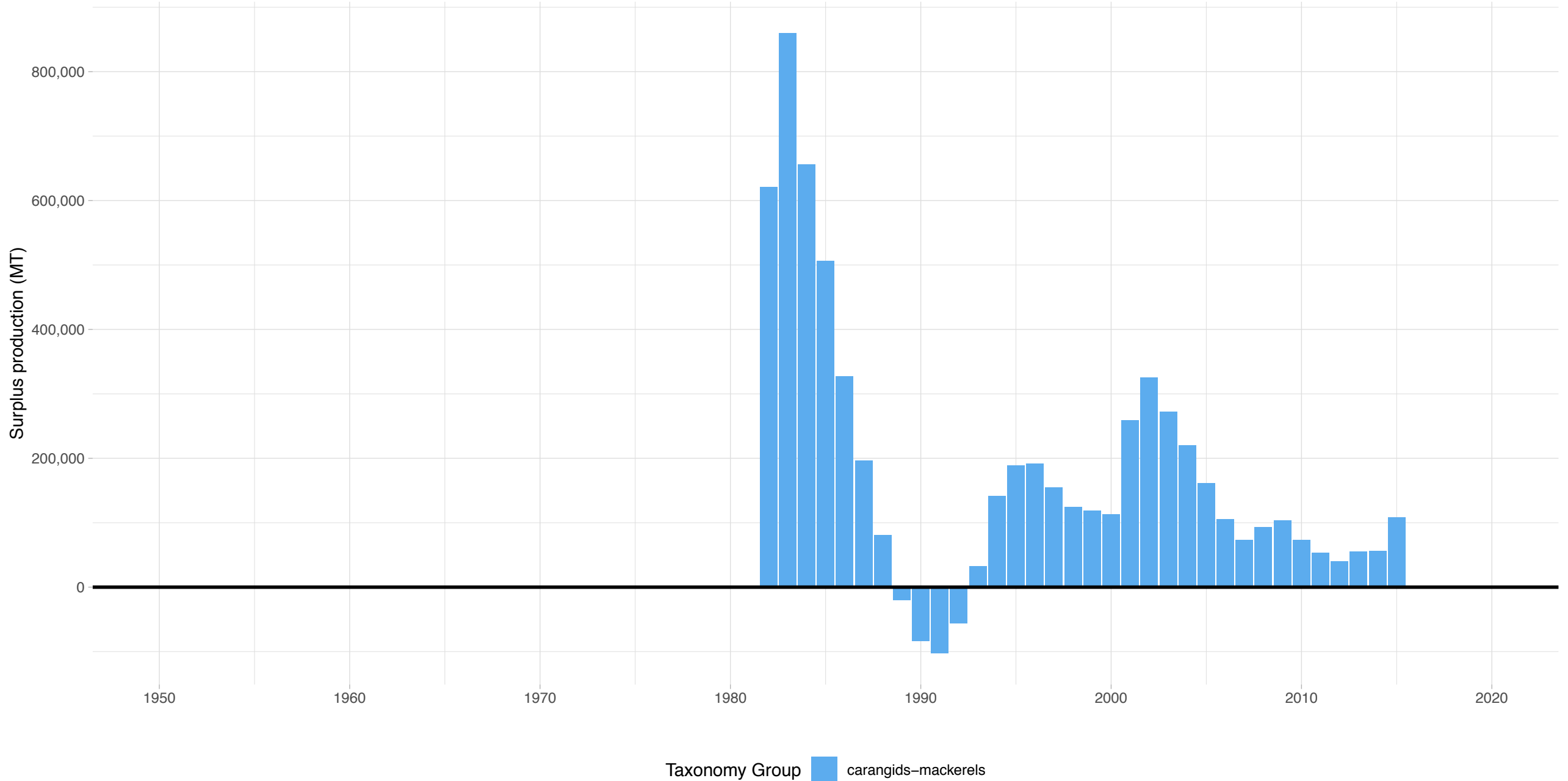
# Mackerel ICES Northeast Atlantic – European Union (non Mediterranean) Region

Stock represents 10.1% of average absolute surplus production

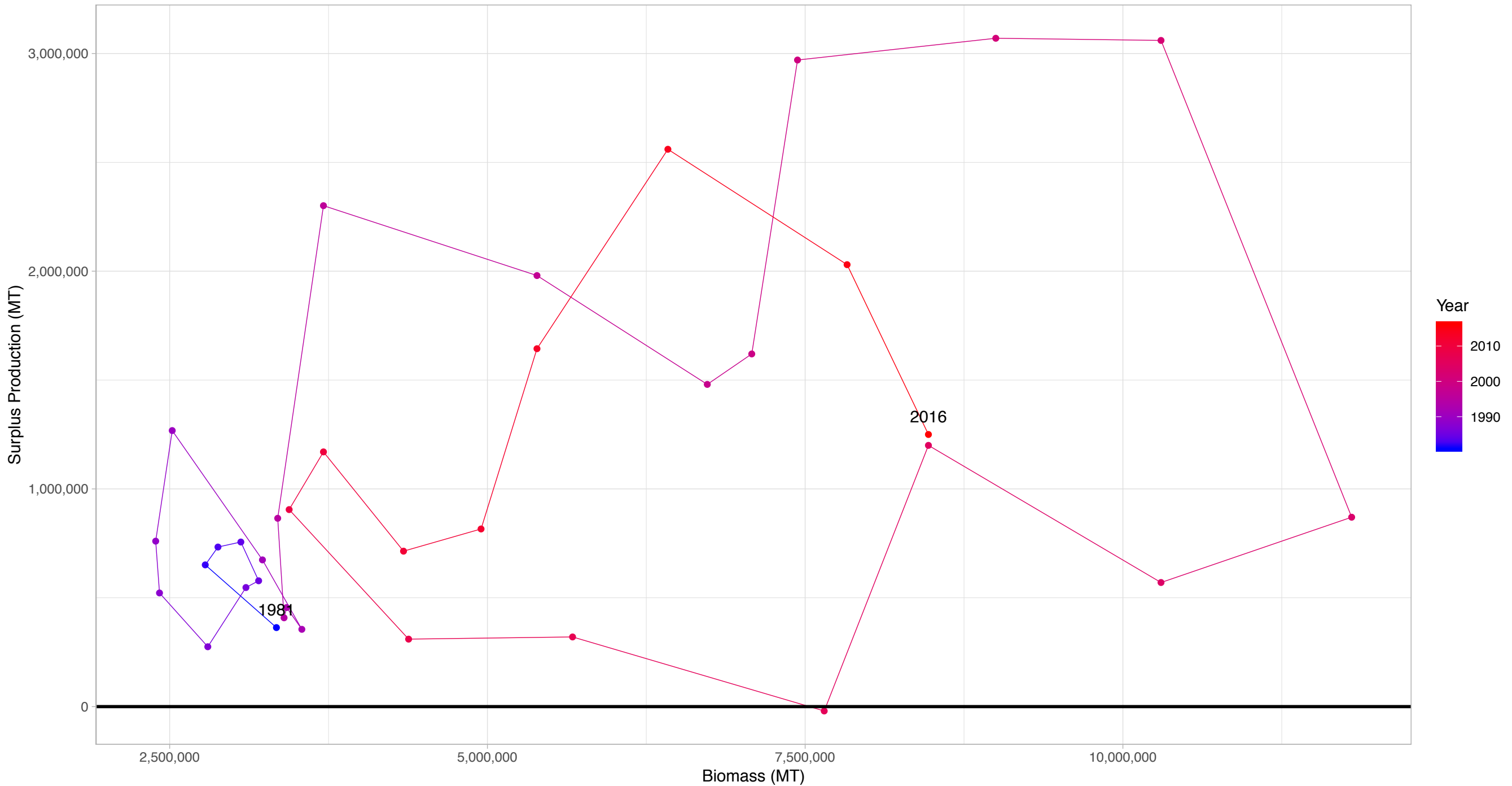


# Horse mackerel IIa-IVa-Vb-VIa-VII-VIII – European Union (non Mediterranean) Region

Stock represents 2.79% of average absolute surplus production

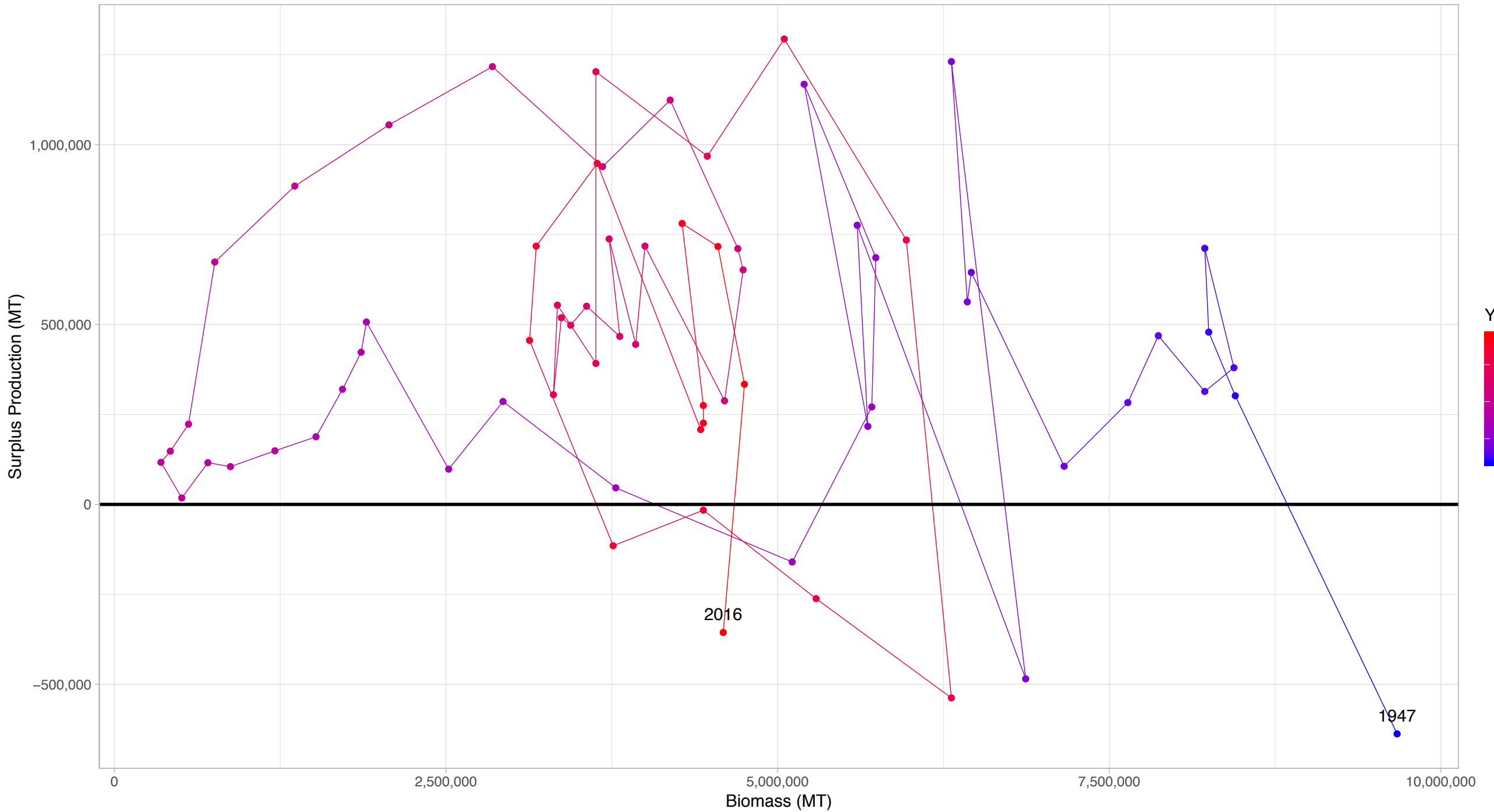


# Blue Whiting Northeast Atlantic in European Union (non Mediterranean) Region



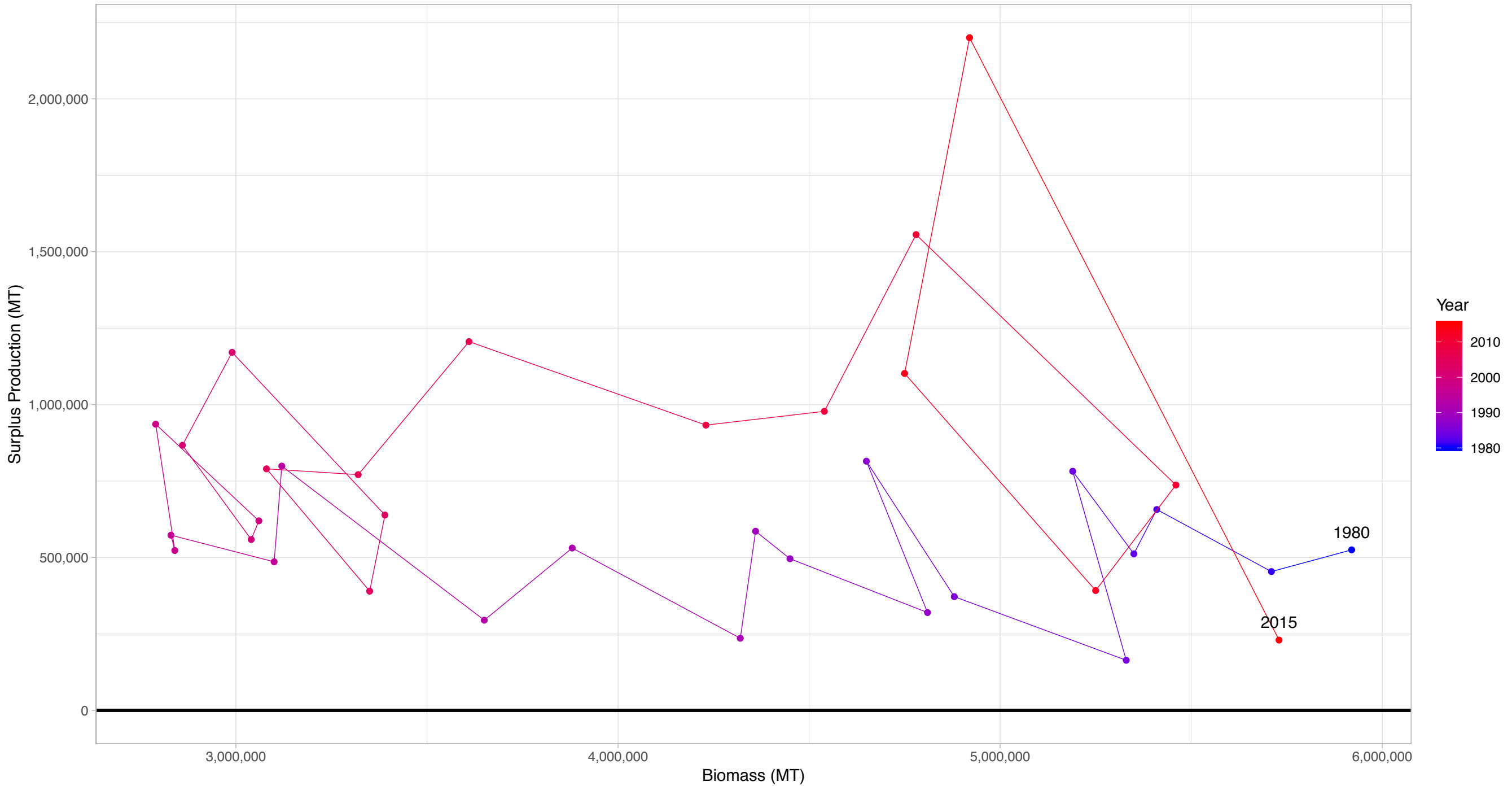
First and last years with recorded surplus production are labeled

# Herring IIIa, VIId and North Sea in European Union (non Mediterranean) Region



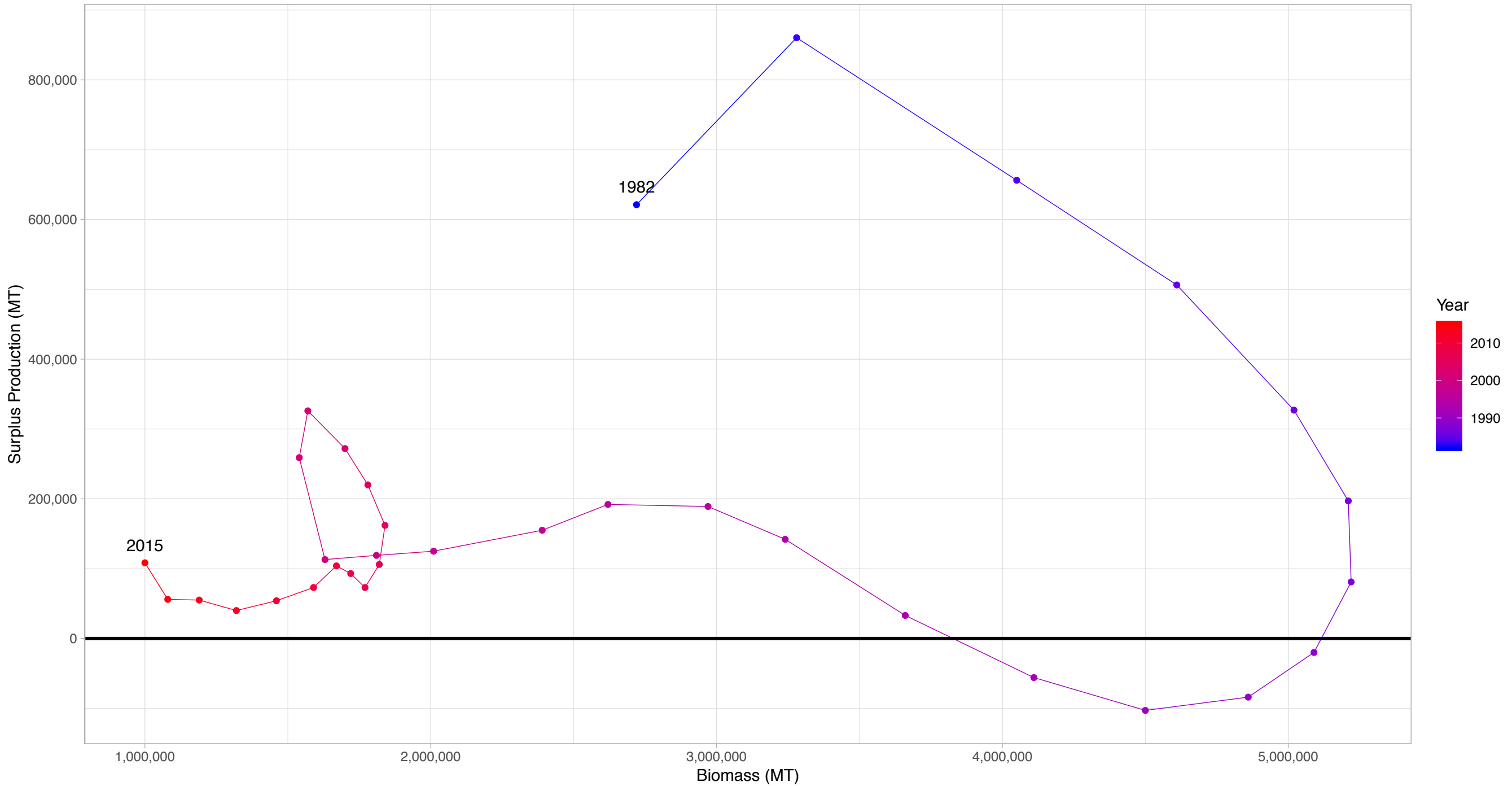
First and last years with recorded surplus production are labeled

# Mackerel ICES Northeast Atlantic in European Union (non Mediterranean) Region



First and last years with recorded surplus production are labeled

# Horse mackerel IIa–IVa–Vb–VIa–VII–VIII in European Union (non Mediterranean) Region



First and last years with recorded surplus production are labeled