

OUTLINE

- Peptide Synthesis (McMurry 26.7)
- Carbohydrate Nomenclature (McMurry 25.1-25.5)
 - Fischer projections (no rotation) and ring-closing of D-monosaccharides

Organic Synthesis of Peptides

Chemoselectivity

Protecting Groups (PG)

1.

2.

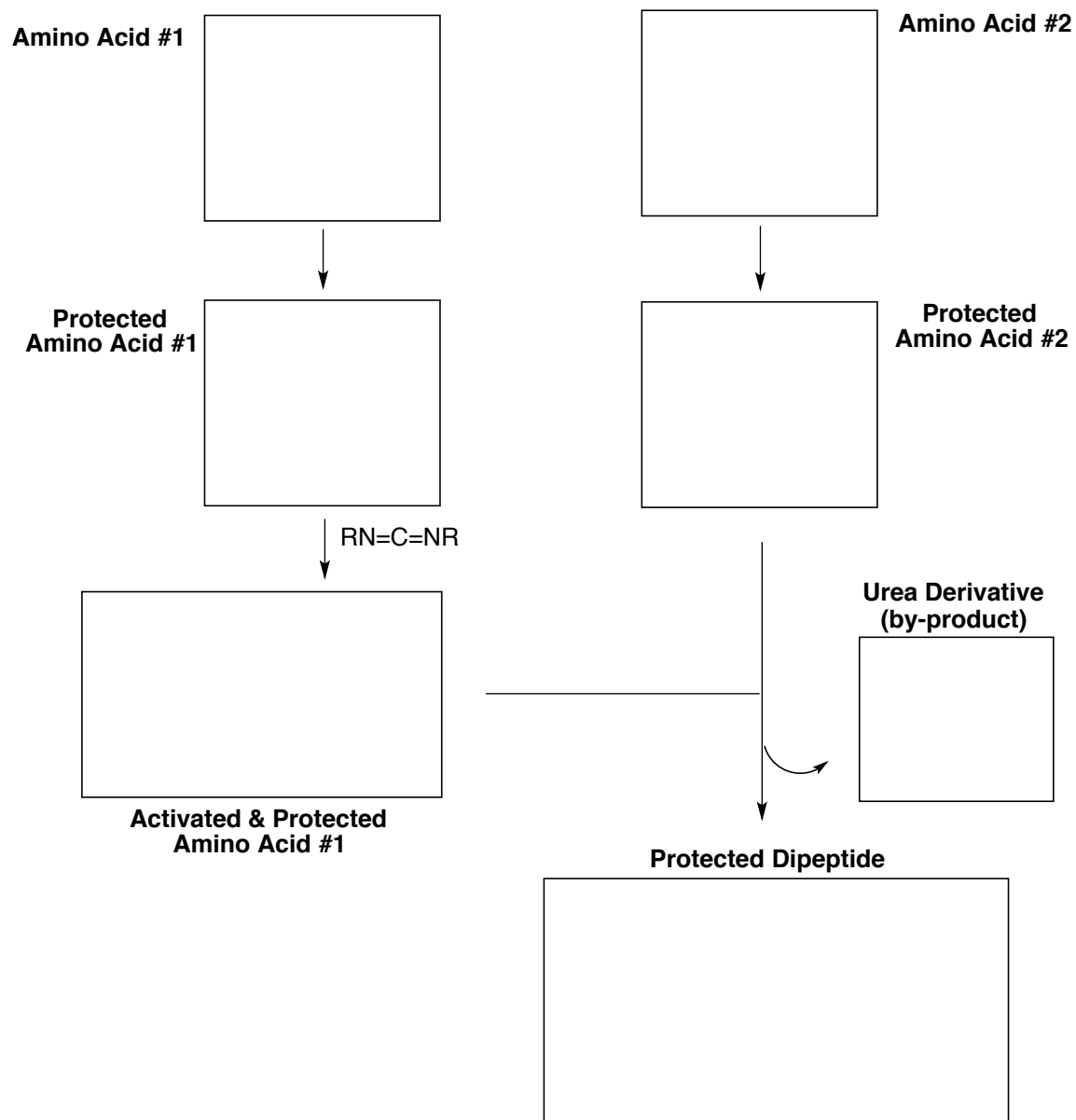
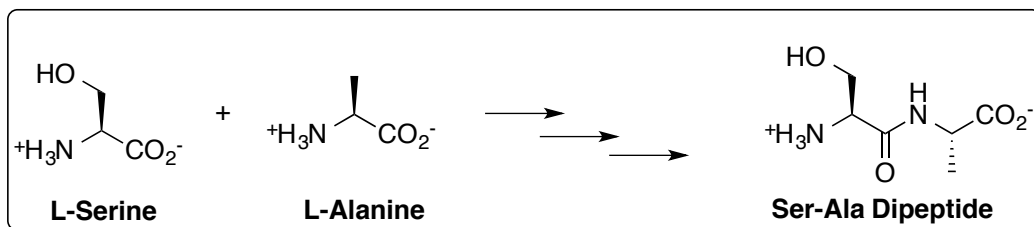
3.

Acid PG

Amine PG

Coupling agents

Chemoselective Synthesis of the Ser-Ala Dipeptide



CARBOHYDRATES**Sugar Classification**

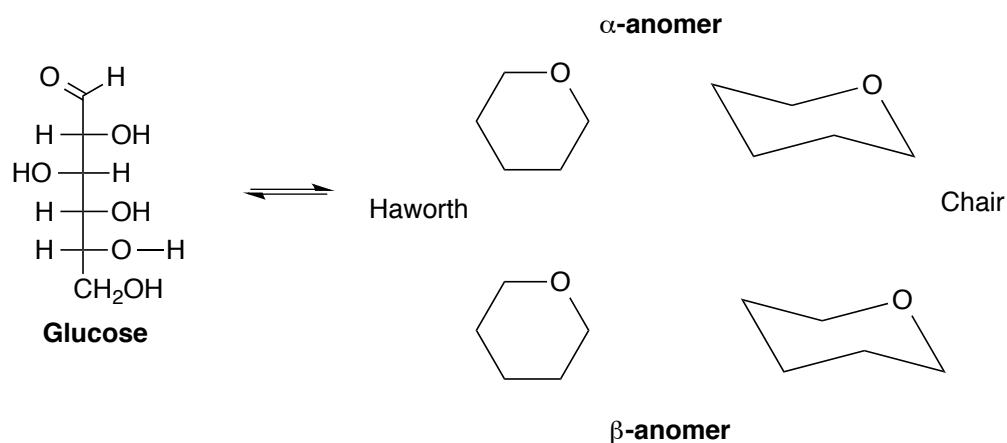
Prefix: *aldo-* or *keto-* for aldehyde or ketone, respectively

Infix: *-tri-*, *-tetr-*, *-pent-*, *-hex-*, *-hept-*, etc. for the number of carbons

Suffix: *-ose* for sugars!

Examples (more in Lecture 7 HW):

Equilibrium between open and closed sugars:



Draw the C2-epimer of glucose in open and closed form (Haworth & chair):

Teach yourself carbohydrate nomenclature using Lecture 7 Carbohydrate HW.