



Carbone Cancer Center

UNIVERSITY OF WISCONSIN
SCHOOL OF MEDICINE AND PUBLIC HEALTH

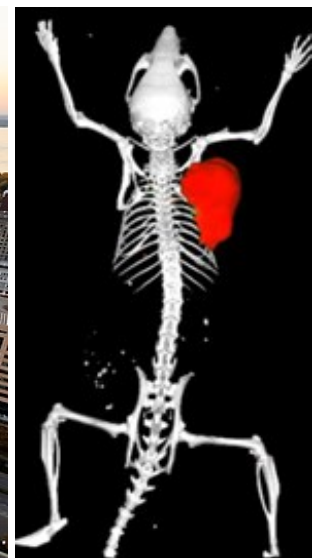
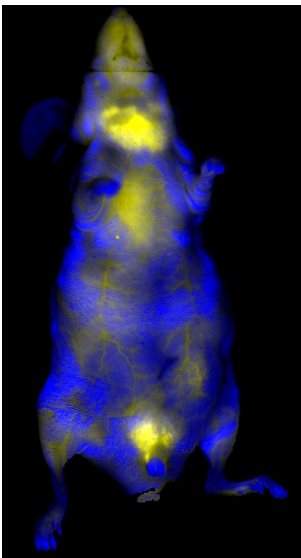
Small Animal Imaging Facility Presents:

2016 Midwest Preclinical Imaging Consortium

University of Wisconsin - Madison

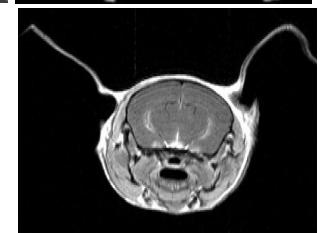
Health Sciences Learning Center (HSLC)

Sunday, May 15th - Tuesday, May 17th, 2016



Questions? Contact

Justin Jeffery - jjjeffery@wisc.edu



www.mpic.wisc.edu

MPIC Agenda

Facilities Session: Sunday, May 15, 2016 (Only Invited Speakers, Facility Directors, Managers, and Technicians)

HSLC 1345 Lecture Hall

3:30pm	Meet in lobby of Best Western*
3:45pm	Shuttle to HSLC*
4:00-6:30pm	Facility Session Presentations*
6:30-7:00pm	Facility Tour°
7:00pm	Dinner°
8:00pm	David Stout , Retired Professor, UCLA Crump Institute for Molecular Imaging <i>Logistics and reproducible quantitation preclinical imaging</i>
9:00pm	Social°

*Facility Speakers, Directors, Managers, and Technicians attending
°All Speakers, Facility Directors, Managers, and Technicians attending

Scientific Session: Monday, May 16, 2016

HSLC 1306 Lecture Hall

6:30-7:30am	Continental Breakfast at Hotel
7:00-7:45am	Shuttle to HSLC
7:50-8:00am	Justin Jeffery , University of Wisconsin-Madison <i>Introduction and welcome</i>
8:00-8:25am	Feng Chen , Memorial Sloan Kettering Cancer Center <i>Radiolabeled nanoparticles for targeted cancer imaging and therapy</i>
8:25-8:50am	Patrick Hankins , Northwestern University <i>Targeting nanotechnology for imaging patient-derived xenograft tumor models</i>
8:50-9:15am	Amit Joshi , Medical College of Wisconsin <i>Multimodal nanoparticle mediated theranostics of cancer</i>
9:15-9:40am	Doug Rice , Notre Dame <i>Molecular imaging and therapeutic applications of zinc(II)-dipicolylamine complexes</i>
9:40-10:05am	Break (Posters)
10:05-10:30am	Reinier Hernandez , UW - Madison, Molecular Imaging and Nanotechnology Lab <i>Unconventional radioisotopes for molecular imaging</i>
10:30-10:55am	Charles Manning - Vanderbilt University <i>New PET tracers for precision cancer imaging</i>
10:55-11:20am	Koresh Shoghi , Washington University in St. Louis <i>Quantitative preclinical PET metabolic imaging</i>

11:20-11:45am	Paul Territo , Indiana University <i>Initial characterization of [11C]-GSK-1482160 as a radioligand targeting P2X7 receptors during neuroinflammation</i>
11:45-12:10pm	Alexander Converse , University of Wisconsin-Madison Waisman Center <i>High resolution PET neuroimaging at UW-Madison</i>
12:10-1:10pm	Lunch
1:10-1:35pm	Mark Smith , University of Maryland-Baltimore <i>High resolution preclinical X-Ray CT and MRI for vascular and neurodegenerative imaging</i>
1:35-2:00pm	Ray Hickey , Mayo Clinic-Rochester <i>Noninvasive imaging of transplanted hepatocytes in small and large animal models of liver disease</i>
2:00-2:25pm	Lara Leoni - University of Chicago <i>Molecular imaging for intranasal drug development</i>
2:25-2:50pm	Matthew Silva , inviCRO <i>In vivo and ex vivo 3D biodistribution imaging in drug research</i>
2:50-3:15pm	Peter LaViolette , Medical College of Wisconsin <i>Validation and creation of new imaging biomarkers with radiological-pathological (Rad-Path) correlation in brain and prostate cancer</i>
3:15-3:40pm	Break (Posters)
3:40-4:05pm	Thomas Neuberger , Penn State University <i>Preclinical high field MRI at Penn State</i>
4:05-4:30pm	Chris Flask , Case Western Reserve University <i>Quantitative MRI on high field preclinical MRI scanners</i>
4:30-4:55pm	Marty Pagel , University of Arizona <i>Picturing the future of cancer health care with CEST MRI</i>
4:55-5:20pm	Kimerly Powell , The Ohio State University <i>Super resolution reconstruction in magnetic resonance microscopy</i>
5:20-5:45pm	Jenny Yang , Georgia State University <i>Contrast enhanced molecular MRI of human disease</i>
5:45-6:00pm	Shuttle to Hotel
6:00-6:45pm	Shuttle to The Great Dane & Brewing Company - Downtown Madison
6:45pm	Dinner / Social Sponsored by Sofie Biosciences & Perkin Elmer The Great Dane & Brewing Company - Downtown Madison

Scientific Session Continued: Tuesday, May 17, 2016

HSLC 1306 Lecture Hall

6:30-7:30am	Continental Breakfast at Hotel
7:30-8:00am	Shuttle to HSLC
8:00-8:05am	Brief Introduction
8:05-8:30am	Andrew Heinmiller , Fujifilm VisualSonics <i>See what you've been missing: ultrasound and photoacoustics for molecular imaging applications</i>
8:30-8:55am	Kevin Eliceiri , UW Laboratory for Optical and Computational Instrumentation (LOCI) <i>Multiscale imaging of the tumor microenvironment</i>
8:55-9:20am	Scott Davis , Dartmouth College <i>Multi-agent fluorescence imaging for quantitative assessment of tumor biomarkers</i>
9:20-9:45am	Eben Rosenthal , Stanford University <i>Optical imaging for surgical navigation</i>
9:45-10:10am	Break (Posters)
10:10-10:35am	Jim Delikatny , University of Pennsylvania <i>Probing cancer metabolism through molecular imaging</i>
10:35-11:00am	Pierre-Alix Dancer , Kendall Partnering <i>Fluorescence imaging for translational applications</i>
11:00-11:25am	Jamey Weichert , University of Wisconsin-Madison <i>A multimodal phospholipid delivery platform for broad spectrum cancer imaging and therapy</i>
11:25-11:30am	Closing Remarks
11:30am	Break/Poster Session (HSLC Atrium) Sponsored by OnLume



Carbone Cancer Center
UNIVERSITY OF WISCONSIN
SCHOOL OF MEDICINE AND PUBLIC HEALTH



VISUALSONICS
FUJIFILM



Sponsors



SOFIEBIOSCIENCES



MORGRIDGE
INSTITUTE FOR RESEARCH



PerkinElmer
For the Better

