



Campus Information



<http://www.union.k-state.edu/>

Hours of Operation:

Sunday 11:00 a.m. – Friday 10:00 p.m.

Saturday 7:00 a.m. – 10:00 p.m.



A full-service bank where you may cash traveler’s checks up to \$500 per day.

Questions? Call 785-532-3500 or <http://www.commercebank.com/locations/manhattan-kansas.asp>

Union Bowling Center –Wabash Cannon Bowl, the Union’s bowling center, is your one-stop shop for recreation on the K-State campus. With bowling lanes, billiards, an arcade and more, the bowling center has something for everyone.

Questions? Call 785-532-6562 or <http://union.k-state.edu/food-fun/union-bowling-center>



K-State Campus Store – Here you can purchase not only books and magazines, but also K-State souvenirs and clothing, DVD rentals, school and art supplies, and dry cleaning. Questions? Call 785-532-6583 or

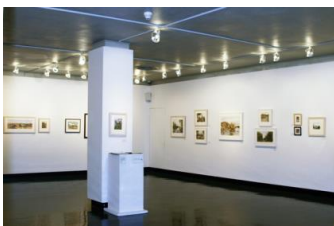
<http://www.bkstr.com/kansasstatestore/home>

The Union Computer Store – As an Apple and Dell authorized retailer, the Union Computer Store specializes in providing the full line of Apple products and select PC items. K-Staters are eligible for exclusive bundles and educational discounts on hardware and software.



Questions? Call 785-532-7319 or <http://union.k-state.edu/shopping-services/computer-store>

Other interesting places in the Student Union –copy services, ATMs, several student organization offices, and a convenience store.



Where to Eat in the K-State Student Union



Subway

(Located downstairs near bowling alley)
Offering a menu of fresh, nutritious sandwiches in a casual atmosphere, the Subway sandwich shop is located on the lower level of the K-State Student Union.



Vista Food Truck

(Located on Bosco Student Plaza)
Besides serving their famous quarter pound Vistaburgers, the truck will also be the place to get our hand-dipped corn dogs, great tasting French fries, many other Vista favorites and Pepsi products.



Chick-fil-A

Known for its original chicken sandwich and waffle fries, Chick-fil-A returns to the K-State Student Union with an expanded menu of fresh, handcrafted food that includes breakfast options. Breakfast is served from 7:30-10:30am.



Panda Express

Panda Express is best-known for its wide variety of original recipes including its Original Orange Chicken™, SweetFire Chicken Breast®, award-winning Honey Walnut Shrimp and Shanghai Angus Steak.



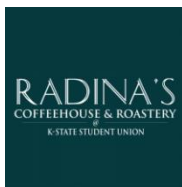
Just Salad

Just Salad provides quality, healthy food in a fast, responsible, yet affordable way. The menu focuses on organically grown, locally sourced balanced recipes curated by a registered dietitian that include nutrient-rich flavor combinations with fiber, protein and calories in mind.



QDOBA

Qdoba restaurants serve up mouthwatering bites that are both chef-inspired and customizable, with fan favorites like burritos, 3-Cheese Queso, Loaded Tortilla Soup and Knockout Tacos.



Radina's

Radina's Coffeehouse & Roastery is dedicated to providing fresh, handcrafted coffee roasted to its peak flavor. Located in the K-State Student Union, Radina's serves high-quality and individually unique coffees from around the world. Known for its in-house, specialty roasted drinks like the City Roast, Full City Roast, Vienna Roast, and French Roast, Radina's has many options to satisfy the choosiest coffee connoisseur.



Call Hall Ice Cream Shoppe



Union Station by JP's

Coming Soon

The Recreation Center

<http://www.recservices.k-state.edu/> or 785-532-6980



The **Recreation Center** complex features racquetball and squash courts; gymnasiums; weight and cardiovascular areas; multipurpose exercise areas; running/walking tracks; combatives room; table tennis room; locker rooms; and central services area for equipment checkout. The **Natorium** (a fancy word for indoor swimming pool) at the **Ahearn Sports Complex** offers two 25-yard pools and one diving pool. A sun deck is also available.

Outdoor facilities include lighted playfields; sand volleyball courts; lighted tennis, basketball, racquetball courts; horseshoe pits; and a fitness cluster with running/walking trails. Outdoor recreational equipment, camping equipment, canoes, and kayaks can be rented at the **Outdoor Rental Center**. Rates can be found on their web site or by calling 785-532-0810.

Summer 2017 Rates:

Recreation Center = \$70.25

Pool = \$41.25

Rec Center & Pool = \$101.25

(Check-in at the front desk. Your name will be on a list of conference participants who have purchased this option.)

Hale Library

<http://www.lib.k-state.edu/> or 785-532-3014



Summer Library Hours:

Monday-Friday 8 a.m.-9 p.m.

Saturday 1:00-5:00 p.m.

Sunday 1 p.m.-9 p.m.



The main library on campus as well as the largest building on campus, Hale Library maintains more than 200 computer terminals open to the public. Visitors to campus will be able to access online books and journals, and are welcome to read any book in the library, but you will not be able to check out materials. The Lehner 24-hour quiet study area provides computers, a copy machine (10¢ a copy), and vending machine.

•If you have trouble with your technology devices you can get help on the 2nd floor at the **Information Technology Assistance Center (iTAC)**. 785-532-4918

•On the lowest level of Hale you will find **Einstein Brothers Bagels**, known for great sandwiches and coffee.



The Engineering Complex



<http://www.k-state.edu/maps/>

<http://www.engg.ksu.edu/>



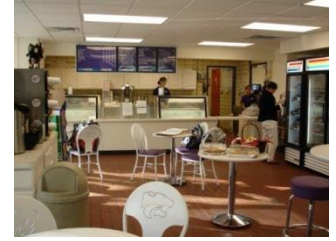
The Engineering Complex consists of four phases of classroom and laboratory construction. Completed in 1976, Durland Hall was followed by the construction of Rathbone Hall in 1982, Fiedler Hall in 2000 and Engineering Hall in 2015.

The complex houses the dean's office for the College of Engineering and the departments of Industrial and Manufacturing Systems Engineering and Mechanical and Nuclear Engineering in Rathbone Hall, Chemical Engineering in Durland Hall, Civil Engineering in Fiedler Hall, and the departments of Electrical and Computer Engineering and Computer Science in Engineering Hall. The engineering complex features solar glass walls that reflect 85 percent of solar heat during the middle of the school year, and allow absorption material behind the glass to collect solar heat energy during the winter months.

The student lounge is open to students wishing to study or simply relax for a few moments in between classes.

Other On-Campus Attractions

Call Hall—Visit K-State's [Call Hall Dairy Bar](#) and have one of the 35 delicious flavors of ice cream made K-State fresh by faculty themselves including Coconut Fudge, Chocolate Razz, Candy Crunch, Blueberry Cheesecake, Apple Dapple, Wild Thing, and more! For more information about the Dairy Bar, call 785-532-1292 or stop by Monday-Friday from 8 a.m. - 6 p.m. or Saturday 9:30 a.m. - 4 p.m.



Kansas State University Gardens is a horticulture display garden open for Kansas State University students and the public to visit for free. The gardens, located along Denison Avenue, one block north of Claflin, are open from dawn to midnight. The Quinlan Visitor Center is open Monday - Friday from 10 a.m. - 4 p.m. Tours of the garden and facility can be scheduled by calling 785-532-3271.

If you are interested in our Garden Project visit this link:

<http://www.ksre.ksu.edu/ksugardens/>

Visit the **Marianna Kistler Beach Museum of Art**, a center for the study and appreciation of Kansas Art. The gallery is free and open Tuesday, Wednesday, and Friday 10 a.m. – 5 p.m., Thursday 10 a.m. – 8 p.m., and Saturday 11 a.m. – 4 p.m. Questions? Call 785-532-7718 or visit <http://beach.k-state.edu/>



K-State Insect Zoo

Come visit and explore the K-State Insect Zoo, located in the old dairy barn on the college campus. Exhibits feature live insects and their arthropod relatives within a distinctly organic setting.

Hours: Tuesday – Friday 1 p.m. – 6 p.m. and Saturday from 12 p.m. – 6 p.m.

Admission: Walk-in = \$3.00/person;

Guided Tour \$4.00/person (scheduled one week in advance)

<http://www.k-state.edu/butterfly> or 785-532-BUGS (2847)

Observation Beehive