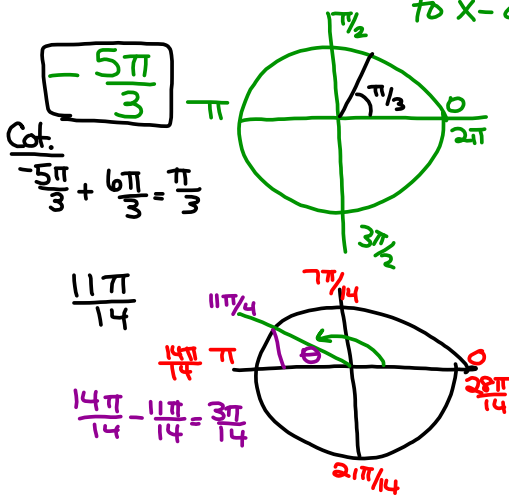


Intro. to Trig

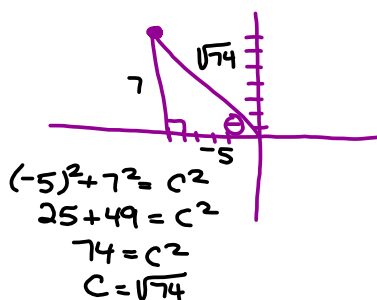
* You must know Unit Circle

- Measured angles in degrees + radians
- Degrees to radians $\angle \times \frac{\pi}{180^\circ}$
- Radians to degrees $\angle \times \frac{180^\circ}{\pi}$
- Degrees Minutes Seconds vs. decimal degrees
^{2nd} angle DMS $\rightarrow 72^\circ 15' 12''$
- Coterminal Angles
 degrees + and - 360°
 radians + and - 2π
- Reference Angles - draw the angle back to x-axis. Always acute



$(-5, 7)$

Find the 6 trig ratios.



$$\sin \theta = \frac{7}{\sqrt{74}} \cdot \frac{\sqrt{74}}{\sqrt{74}} = \frac{7\sqrt{74}}{74}$$

$$\cos \theta = \frac{-5\sqrt{74}}{74}$$

$$\tan \theta = -\frac{7}{5}$$