
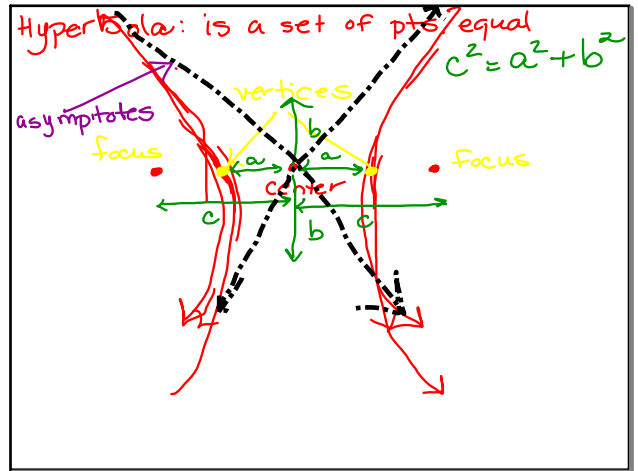


Hyperbola: is a set of pts. such that the difference bet. the two foci is constant.



Oct 28-11:47 AM



Oct 28-2:12 PM

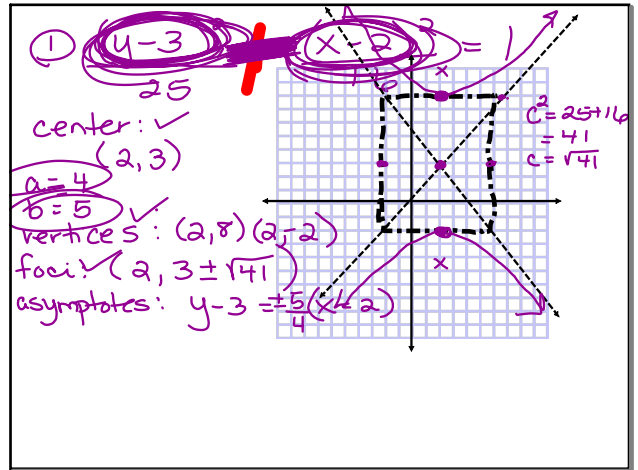
Eq. in standard form:

$$\frac{(x-h)^2}{a^2} - \frac{(y-k)^2}{b^2} = 1$$

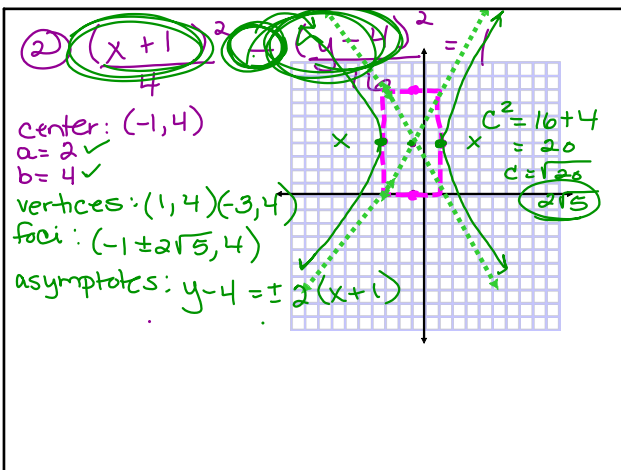
center: (h, k) a ↗ b ↘

$$\frac{(y-k)^2}{b^2} - \frac{(x-h)^2}{a^2} = 1$$

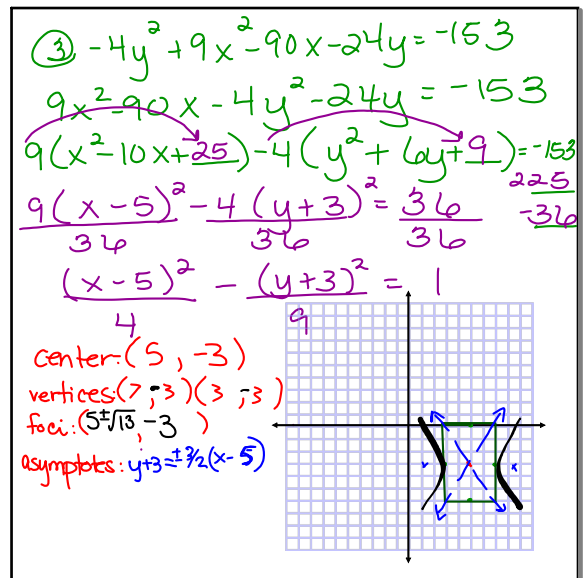
Oct 28-2:27 PM



Oct 28-2:32 PM



Oct 28-2:42 PM



Oct 28-2:53 PM