

Ground Bass Composing Sheet

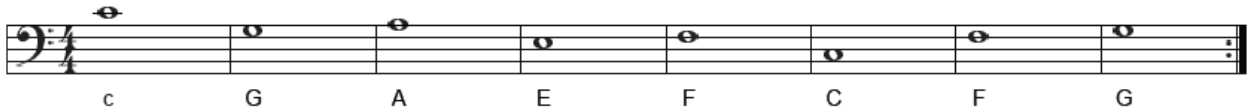
Name _____

Form _____



1. Listen to Pachelbel's "Canon" and notice :

- (a) How the eight-note bass line printed below is repeated over and over again. This type of bass line is called a **ground bass**



- (b) The way in which different melodies appear in the higher parts, beginning simply and gradually becoming faster and faster with more and more notes added. These constantly changing melodies are **variations** which maintain interest even though the bass line remains the same.

2. Now play the ground bass line (above), the first 2 melody lines, and then the chord progression.

Part 1



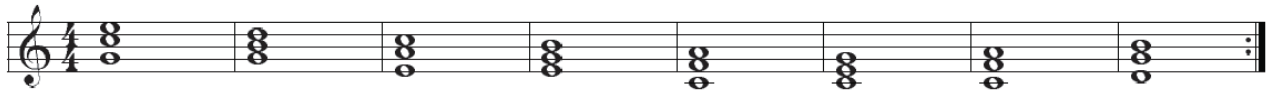
Part 2



CHORD PROGRESSION

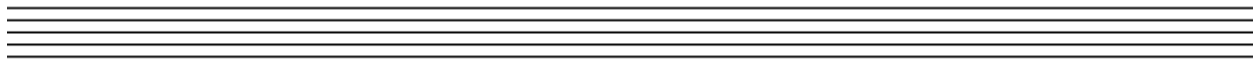
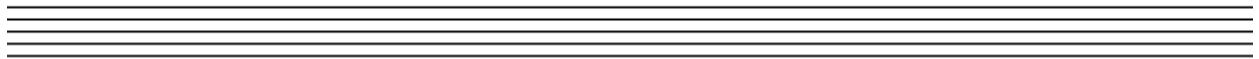
C	G	Am	Em	F	C	F	G
G E C	D B G	E C A	B G E	C A F	G E C	C A F	D B G

3. Playing the chords this way uses a lot of movement, now try the smooth version



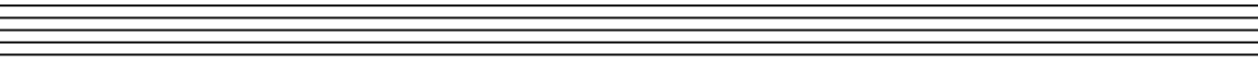
E C G	D B G	C A E	B G E	A F C	G E C	A F C	B G D
-------------	-------------	-------------	-------------	-------------	-------------	-------------	-------------

4. Pachelbel created his melodies by taking notes from each chord. Now compose two of your own melodies in the same way.

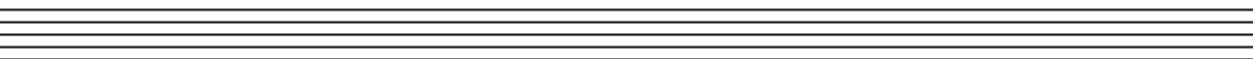


5. Leave one of your melodies as it is. Make variations of the others by :

(a) Playing one of your melodies to this rhythm, or a rhythm of your choice



(b) Adding extra chord notes in each bar to fit this rhythm, or a rhythm of your choice



(c) In your completed variation (b) above, you may decide to add **passing notes** to make your melody smoother. Passing notes are “in-between” notes. They are like *stepping stones* to the next melody note.

