

Ground Bass Composing Sheet

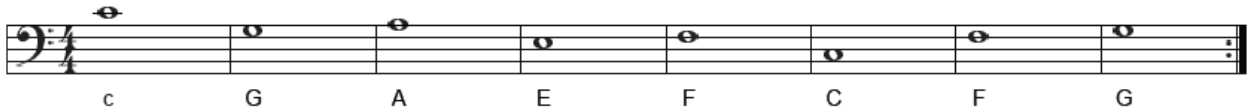
Name _____

Form _____



1. Listen to Pachelbel's "Canon" and notice :

- (a) How the eight-note bass line printed below is repeated over and over again. This type of bass line is called a **ground bass**



- (b) The way in which different melodies appear in the higher parts, beginning simply and gradually becoming faster and faster with more and more notes added. These constantly changing melodies are **variations** which maintain interest even though the bass line remains the same.

2. Now play the ground bass line (above), the first 2 melody lines, and then the chord progression.

Part 1



Part 2



CHORD PROGRESSION

C G Am Em F C F G

G E C	D B G	E C A	B G E	C A F	G E C	C A F	D B G
-------------	-------------	-------------	-------------	-------------	-------------	-------------	-------------

