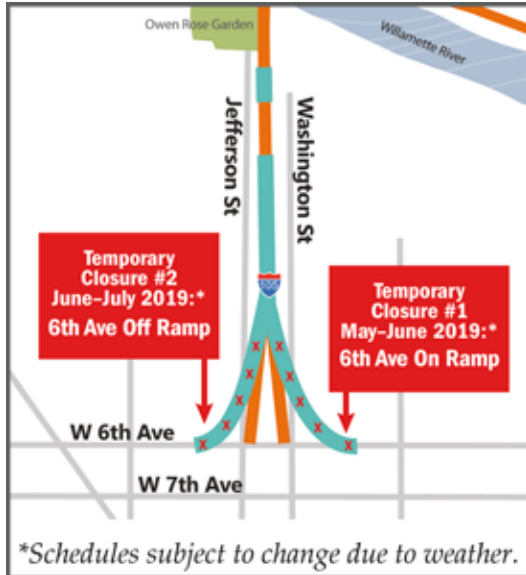




6th Avenue On-Ramp to I-105 to Close



Beginning **Monday, May 20** the westbound 6th Avenue on-ramp to eastbound I-105 will close for construction for approximately four weeks. One lane of the 7th Avenue/Washington Street on-ramp will continue to be closed for bridge joint replacement. The good news is that both of the 7th Street on-ramp lanes will reopen within about 10 days to help ease congestion.

In late June the 6th Avenue off-ramp will close, along with one lane of the 7th Avenue /Jefferson Street off-ramp.

Expect delays, increased congestion, and try to avoid traffic



Know before you go with the most up to date information about project at [TripCheck.com](https://www.tripcheck.com)

or sign up for regular email updates for this and other ODOT projects at: <https://public.govdelivery.com/accounts/ORDOT/subscriber/new>

For more information about the project, please visit: [Interstate 105 \(Washington/Jefferson Street Bridge\) Bridge Repair Project](#)