

Solar Sociability

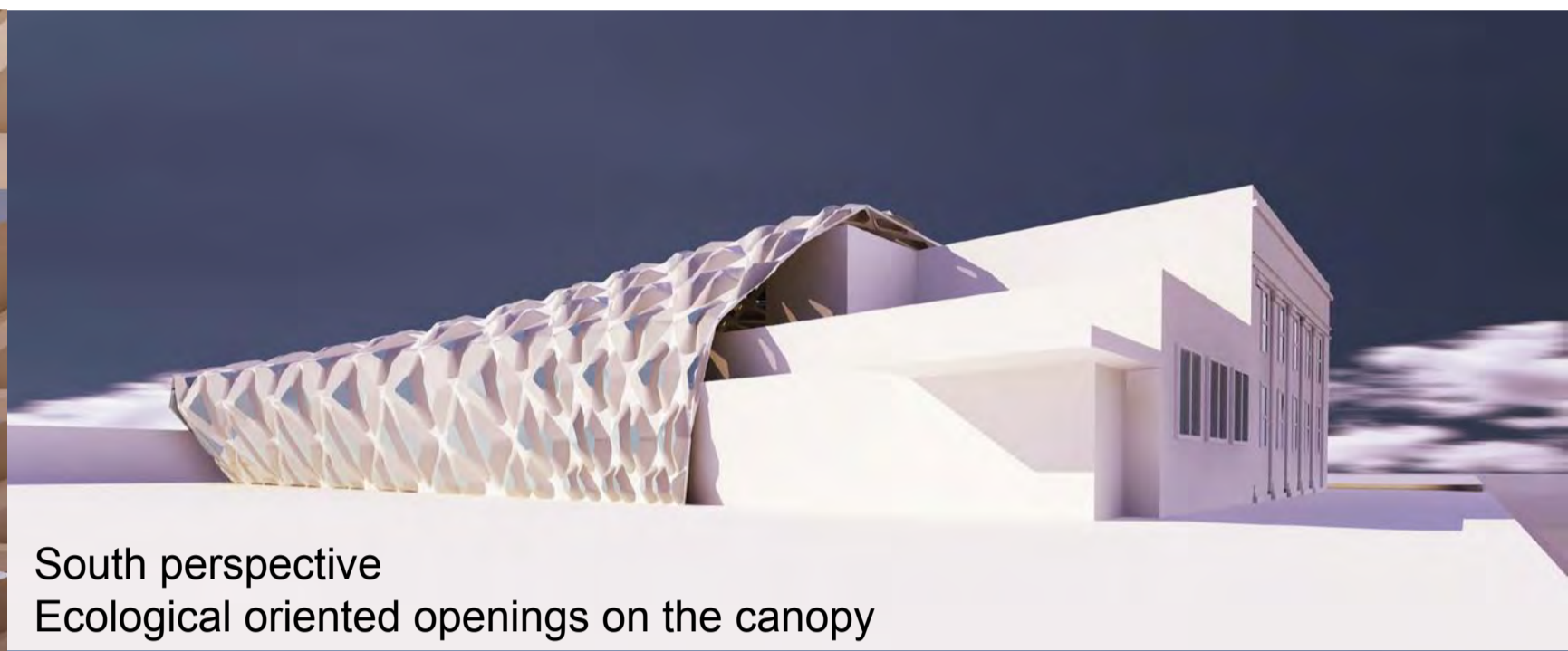


Bleaubien Market

Instructor: Philip Speranza Student: Zhu Ziye



Corner perspective
The most active place for not only local participation but also business benefit



South perspective
Ecological oriented openings on the canopy

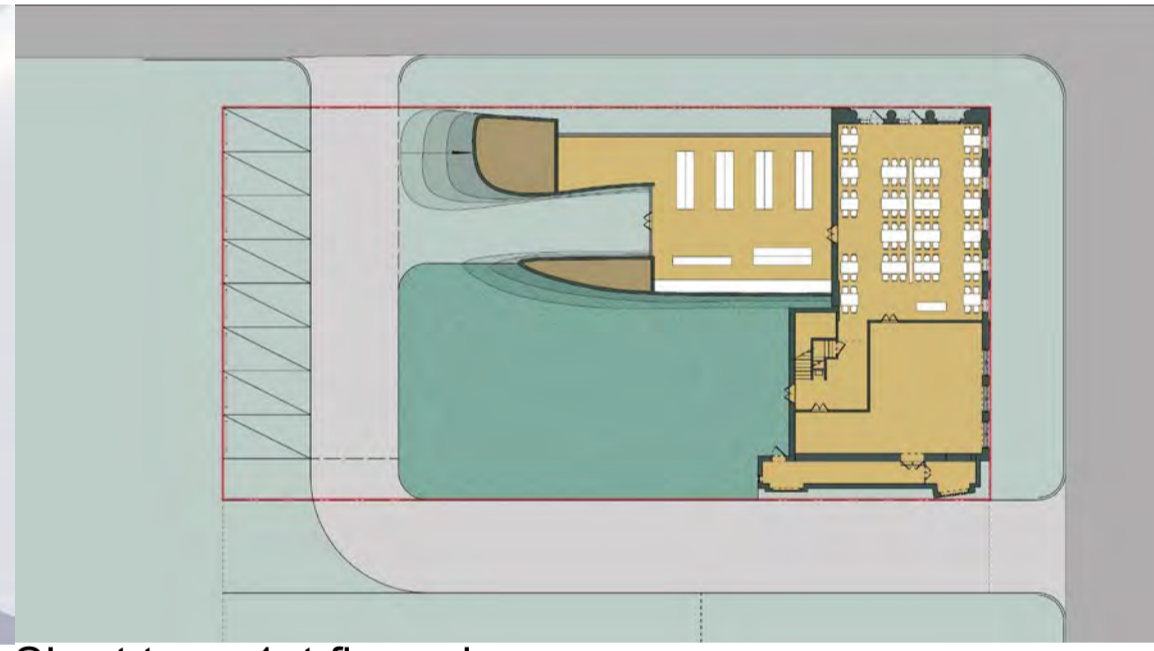
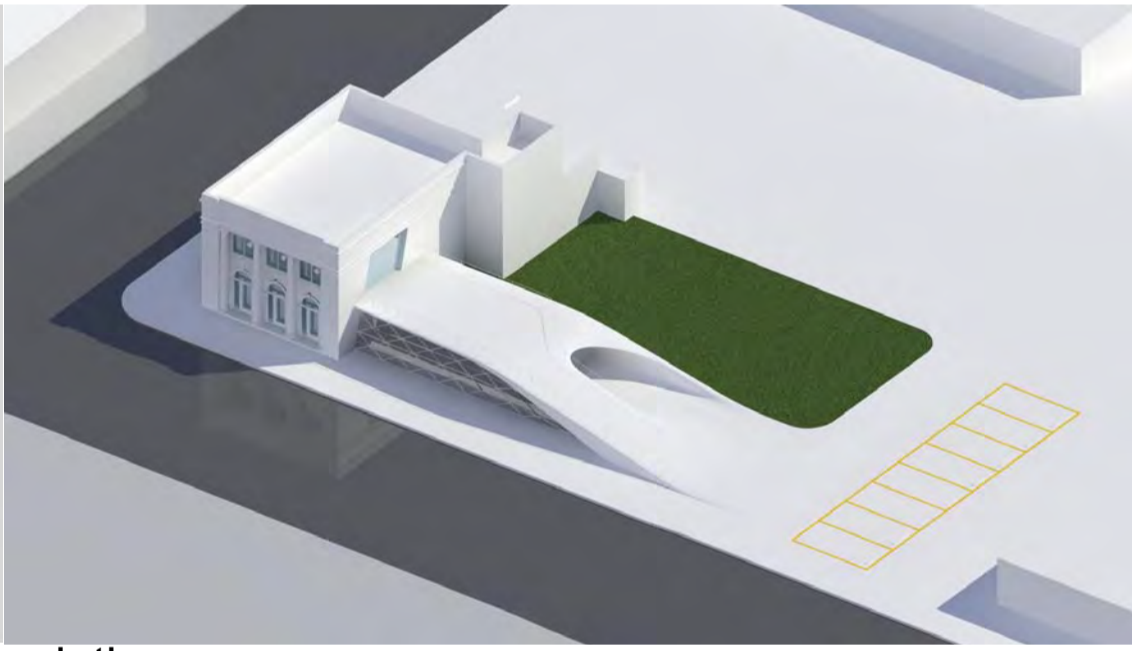


North perspective
The half outdoor space opens to the main road and neighborhood community

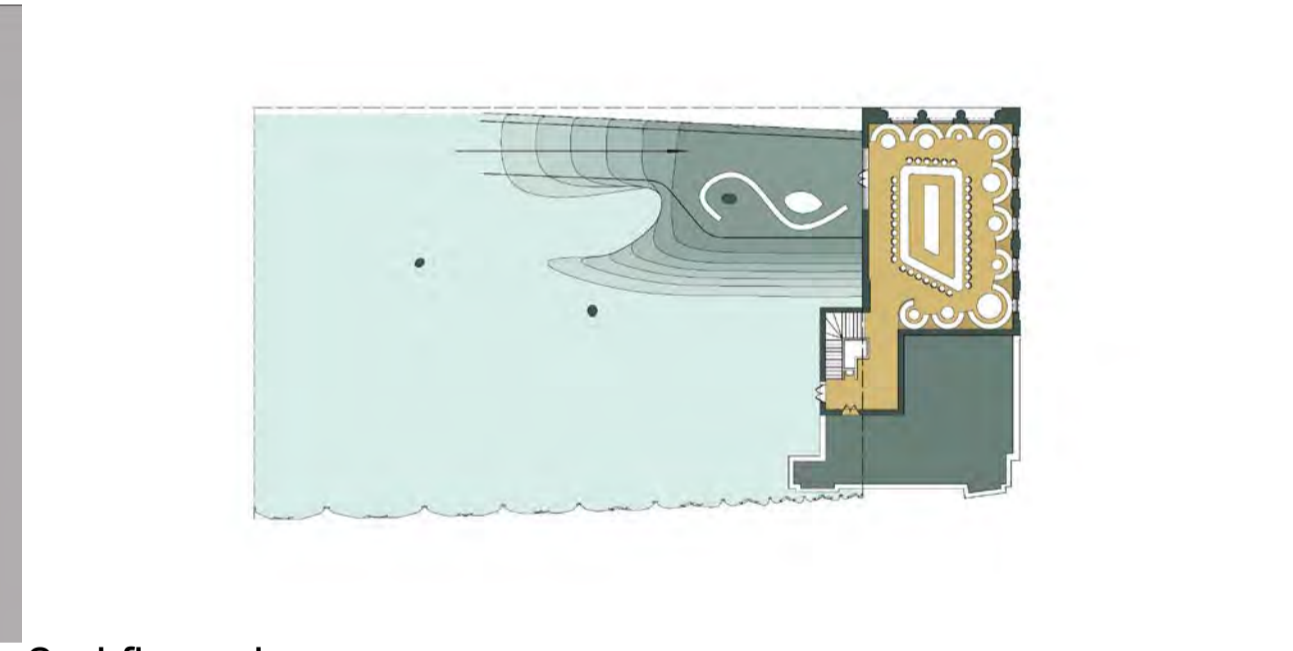
Short term-long term schedule or two alternative scheme



Short term or economic and conservative solution



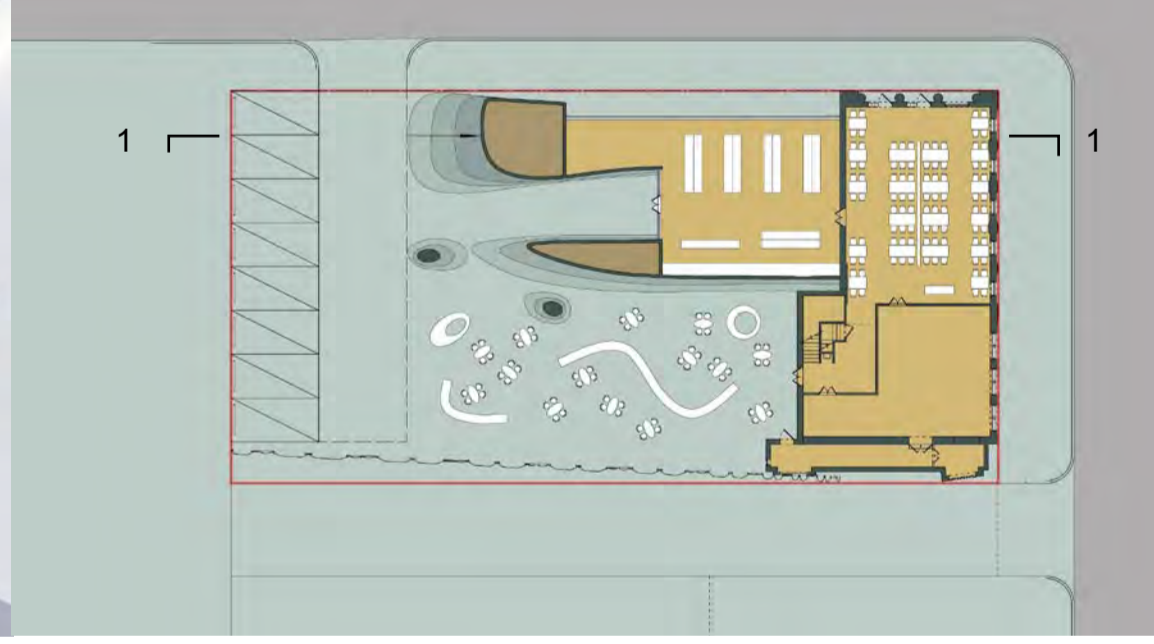
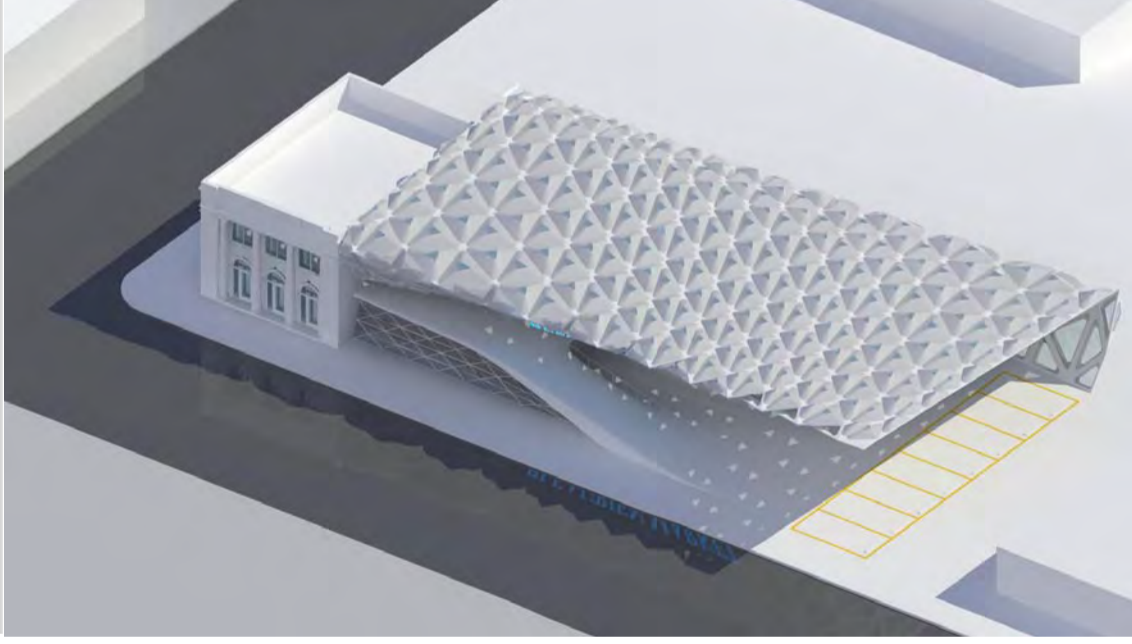
Short term 1st floor plan



2nd floor plan



Long term or excellent and aggressive solution

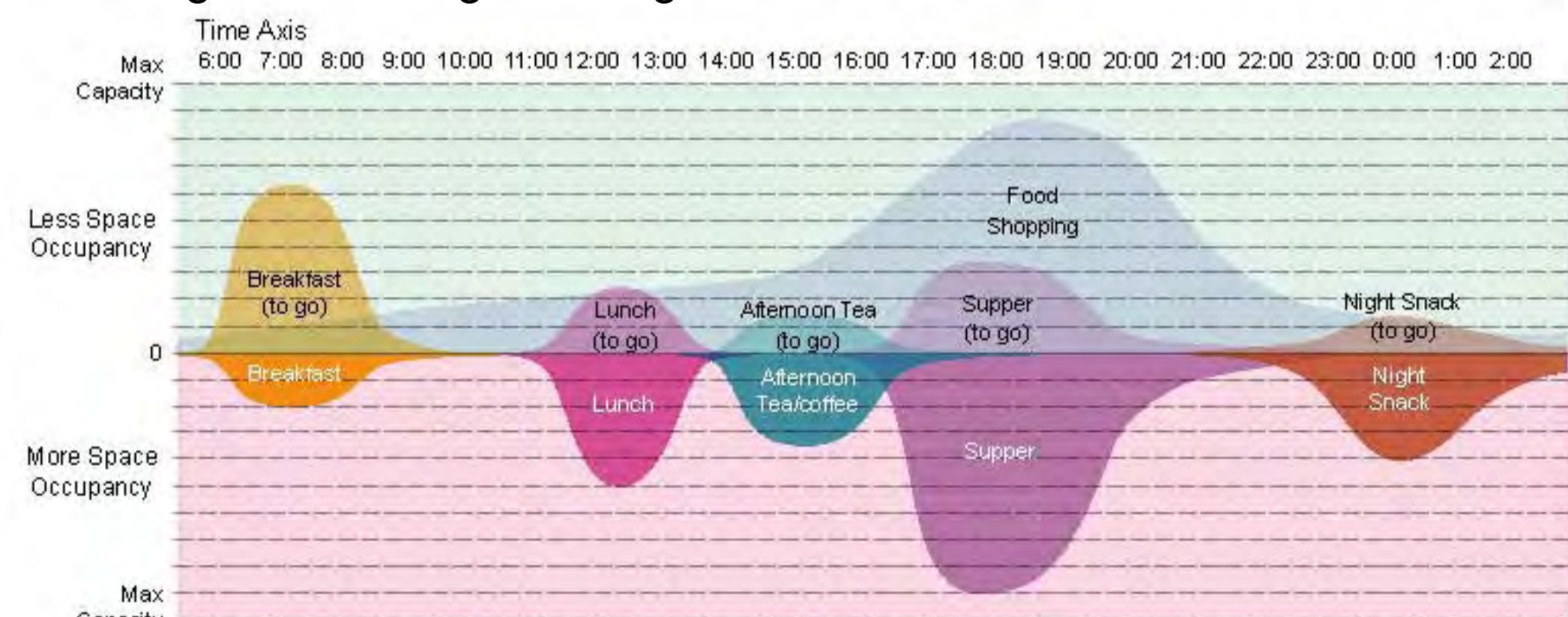


Long term 1st floor plan

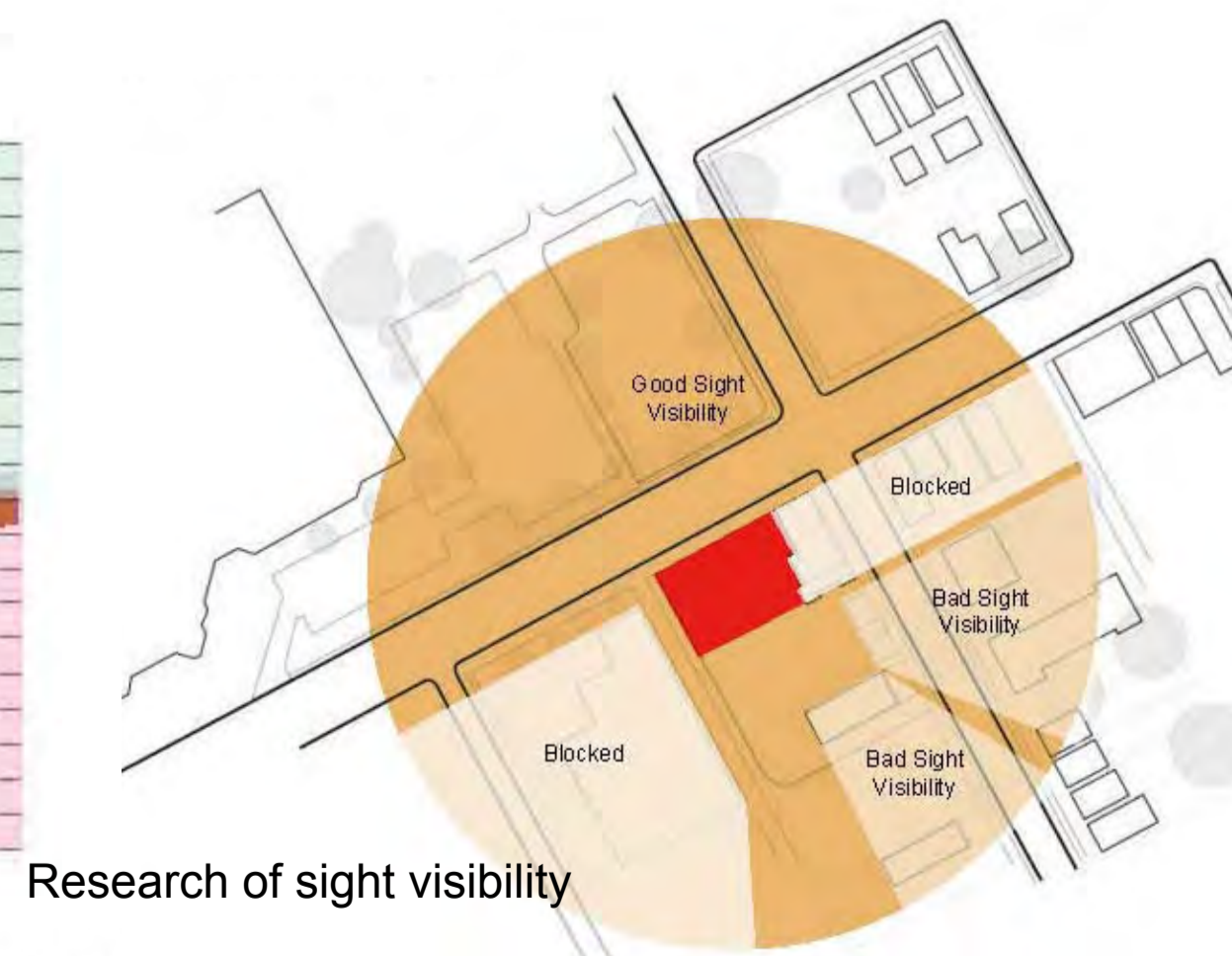
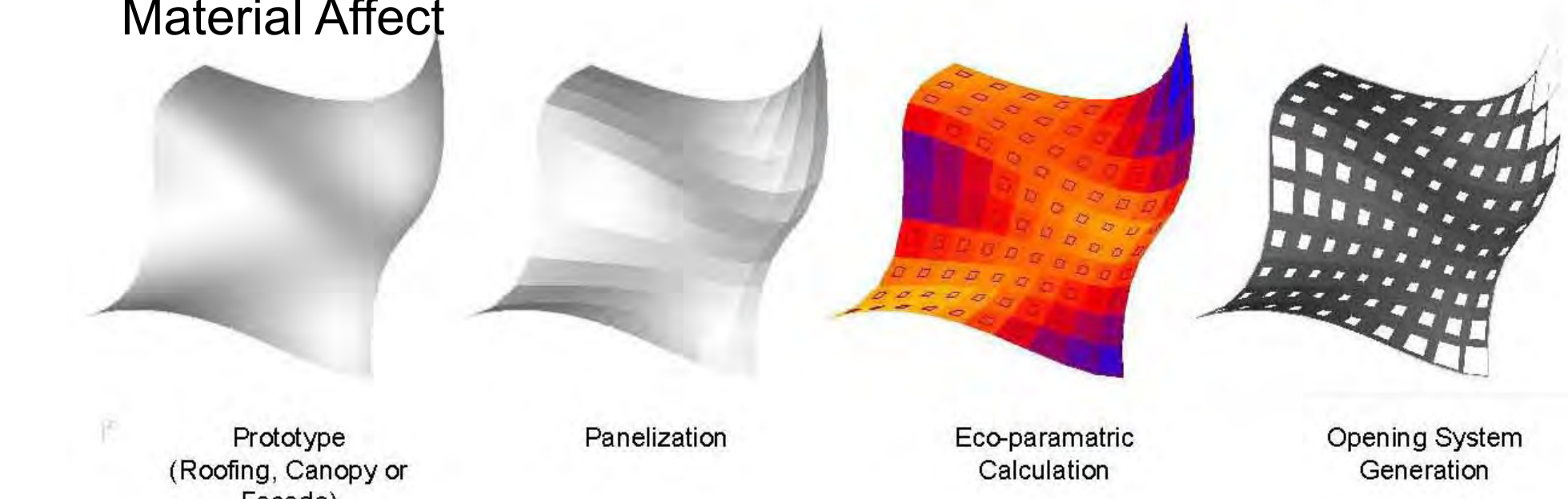


Vertical contribution of function

Diagram of Design Strategical



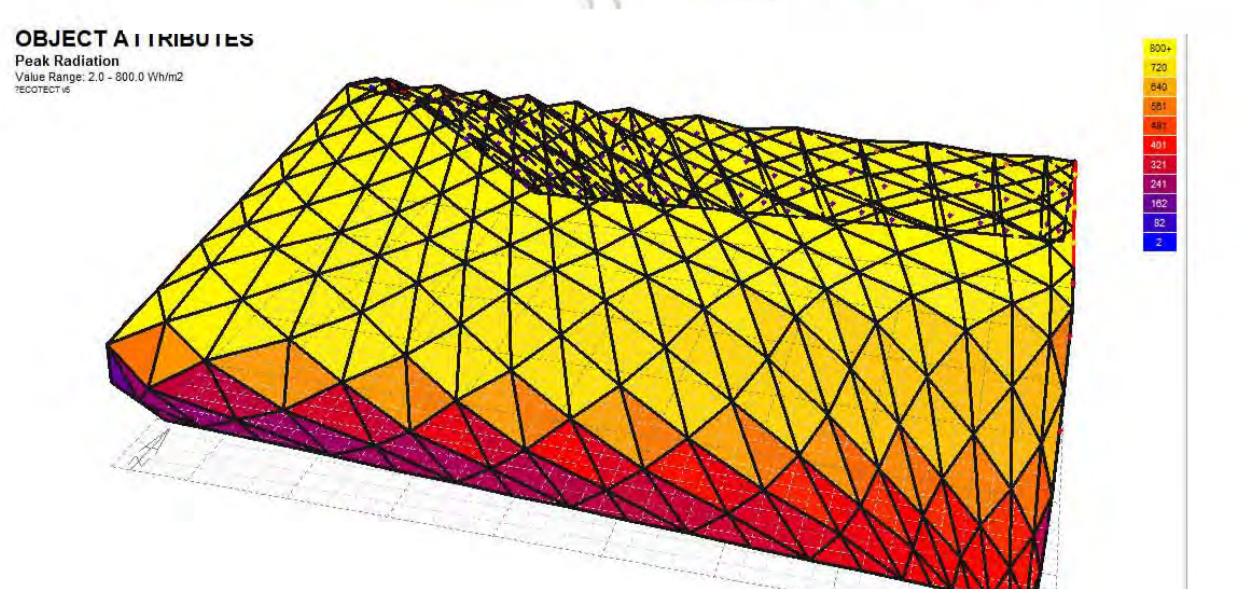
Event timeline estimation
Material Affect



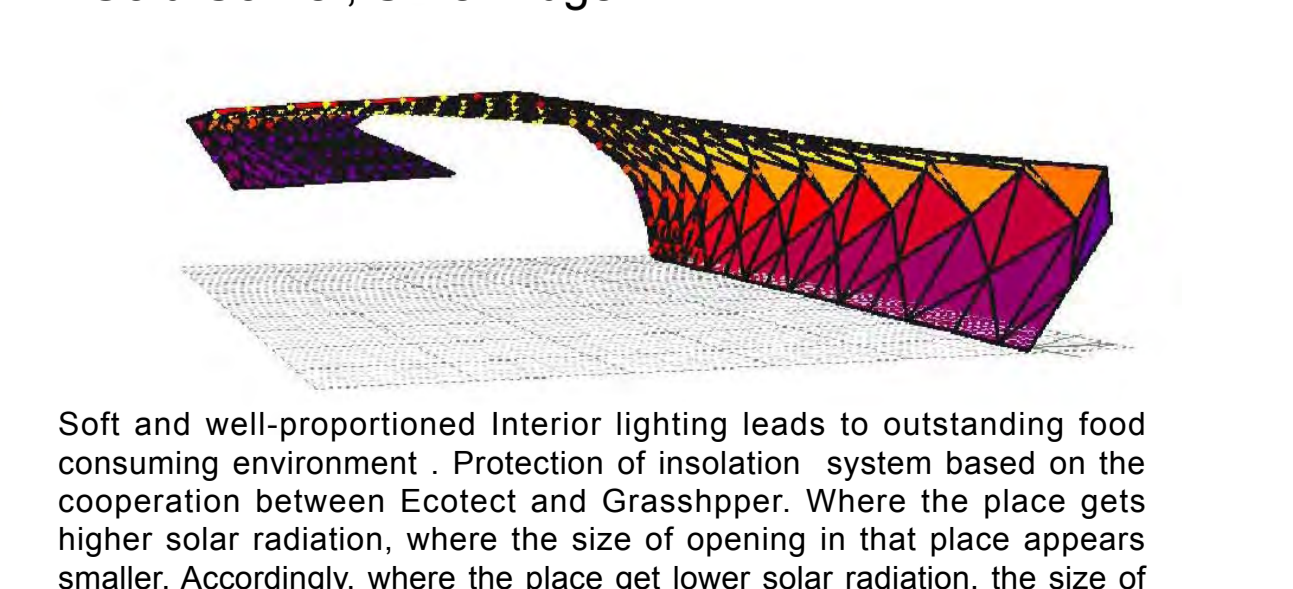
Research of sight visibility



Golden Rule in Retail Estate
Gold Corner, Silver Edge



Analysis of Sunlight Contribution in Ecotect



Soft and well-proportioned Interior lighting leads to outstanding food consuming environment. Protection of insulation system based on the cooperation between Ecotect and Grasshopper. Where the place gets higher solar radiation, where the size of opening in that place appears smaller. Accordingly, where the place get lower solar radiation, the size of opening in that place appears bigger. Therefore, thanks to the calculation by eco-parametric solutions, in anywhere interior, people will enjoy a well-proportioned and elegant circumstance. It should be very good for having a wonderful dining time, as well as public communication.