

Josephine County Food Bank

Community Profile

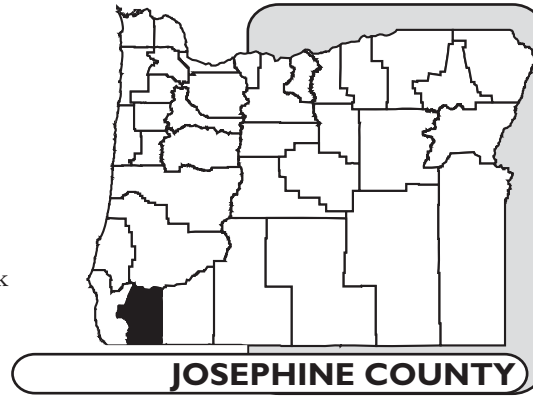
Population 82,713

Location Grants Pass

Position Description

Sponsor Josephine County Food Bank

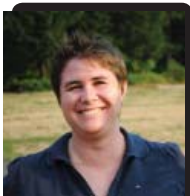
Supervisor Sam Engel
Resource Development
Coordinator



Assignment Josephine County Food Bank is dedicated to the collection and distribution of emergency food to a food bank network of local member agencies serving low-income individuals and families throughout Josephine County. To meet the high demand for emergency food resources within the community and to keep in line with Josephine County Food Bank's mission to address not only the symptoms but the causes of poverty, the Food Bank continues to develop their community education and agriculture program.

The RARE participant placed with the Josephine County Food Bank will conduct a comprehensive inventory of regional food systems and resources in Josephine County. The participant will examine local food self-sufficiency including local retail, livable wage farming, and local farmers markets. Additionally, the participant will work to form partnerships with the local farming and agricultural community as a means of increase involvement, and to increase the ability to produce and market locally grown products. Lastly, the participant will support further development of Josephine County Food Bank's commercial kitchen.

RARE Participant



Jillian Tucker

Jillian Tucker Jillian received her Bachelor of Arts in History from California State University Stanislaus. After attaining her Bachelors Degree, Jillian served in Peace Corps as an Agro Forestry Extension Agent in Niger. As a Peace Corps Volunteer she helped plan, develop and teach a week-long health and education fair for young Nigerian women, developed numerous grants, and implemented and managed a project resulting in the installation of a grain grinder in a rural village of 750 people. Since returning from Niger, Jillian has been working in Grants Pass, Oregon as a Community Resources Specialist for Pathways to Care Network where she has devoted herself to working in the social services arena. Following her year with the RARE Program, Jillian hopes to move to different sectors of the non-profit world and pursue graduate program in the field of non-profit management.