

# Illinois Valley Soil and Water Conservation District

## Community Profile

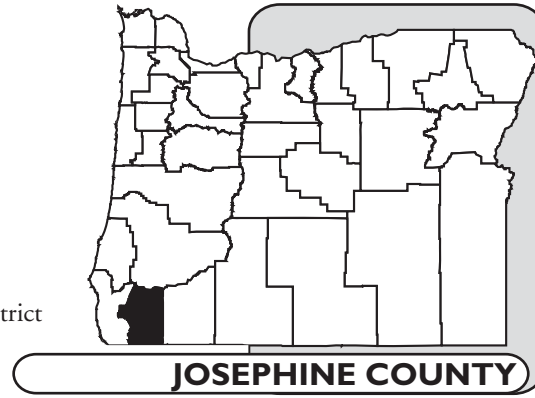
**Population** 82,713

**Location** Cave Junction

## Position Description

**Sponsor** Illinois Valley Soil and Water Conservation District

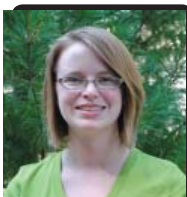
**Supervisor** Kevin O'Brien  
District Manager



**Assignment** The Illinois Valley Soil and Water Conservation District established on December 13, 1949, covers the Illinois River watershed in Josephine County. The district is one of 45 SWCDs chartered under the Oregon Department of Agriculture to protect the state's renewable natural resources. In 1994, Josephine County combined the Illinois Valley Soil and Water Conservation District with the Illinois Valley Watershed Council under "The Oregon Plan for Salmon and Watersheds". In addition to its other responsibilities, the IVSWCD manages the 172-acre Thompson Creek Woodland Conservation Tract, along with other projects funded by federal, state, and private grants.

The RARE participant placed with the Illinois Valley Soil and Water Conservation District will have the opportunity to work on a wide array of natural resource projects. Specifically, the participant work with district directors and staff to develop an organizational outreach plan, locate viable funding sources that focus on capacity building, work with staff to identify and submit appropriate grants, expand existing education and outreach program, and provide assistance in implementing a number of watershed health projects.

## RARE Participant



Nancy Smebak

**Nancy Smebak** received her Bachelor in Arts in Architecture from Washington University in St. Louis. Continuing her education, Nancy recently received a Certificate in Non-Profit Management from the University of Texas at San Antonio. Following her studies, Nancy joined AmeriCorps working directly with City Year where she collaborated with a diverse team of young adults to provide tutoring, after school programs, and city-wide public service opportunities to at-risk minority middle school students in San Antonio, Texas. Via the RARE Program, Nancy hopes to explore planning and community design as a career path. Following her year with the RARE Program, Nancy plans to pursue a Masters Degree in Urban Design and Planning.