

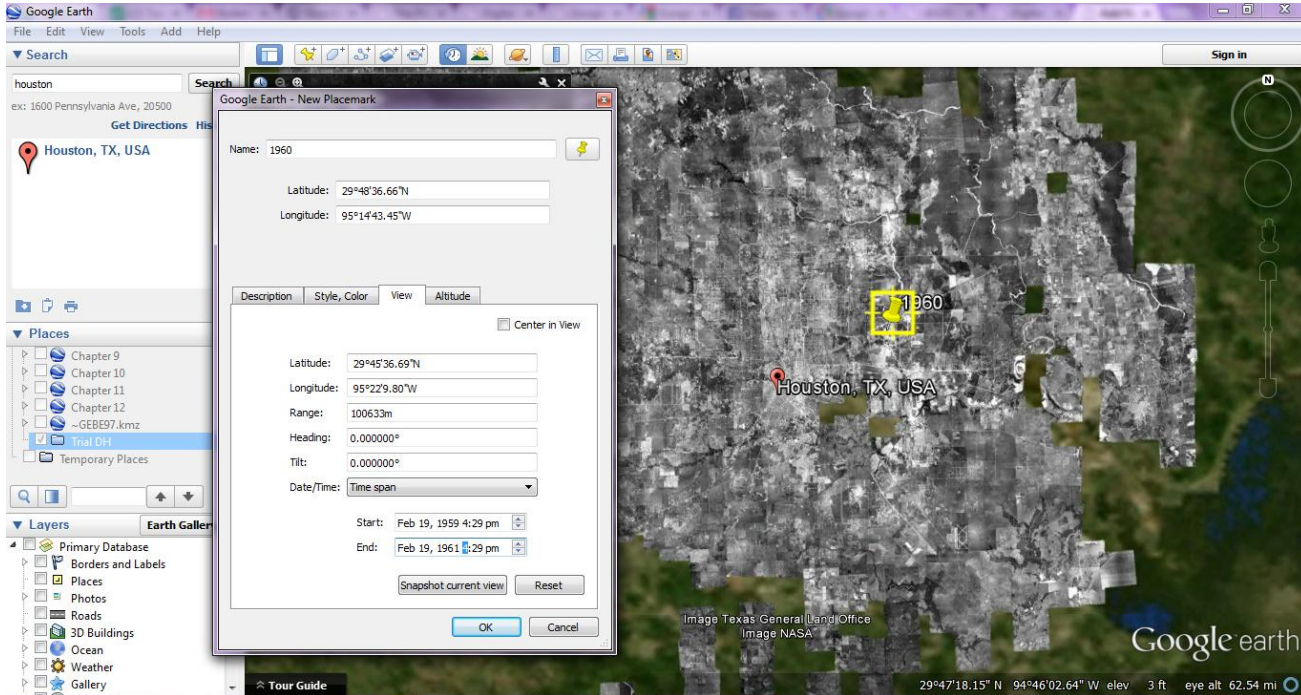
Geographic Tools

Clare and Kaitlyn

Google Maps

- Capabilities: import data, create own vector layers
- [Tutorial Map Example](#)
- Limitations: overcrowding of placemarks, maximum of 300 features
- Useful with visualizing special cases

Google Earth



Google Fusion Tables

- [Social Explorer](#)
- [Runaway slave spreadsheet](#)
- [Final Product](#)

Challenges

- Source limitation
- Acquisition of data
- Historical Texas counties KML

Location ambiguity

- Discrepancy between location found and location of slave owner ([Jerry](#))
- Run away event happened in Houston, but owner from Montgomery ([Sarah](#))
- [Non Texas locations](#)
- Counties not mentioned

Historical Questions

- Where are the slaves running from and where are they being caught?
- What is the reach of the newspaper?
- Where did slaveholders think their slaves ran away?
- Texas vs other states? Rural vs urban?
- Visualization