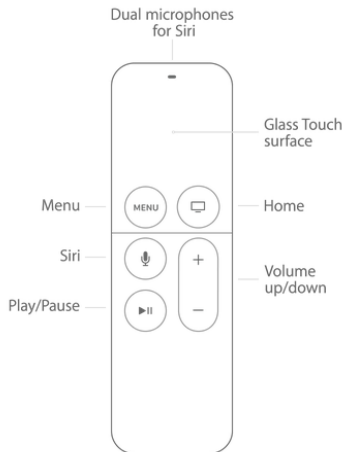


APPLE TV INSTRUCTIONS - Black Remote



← Instructions for Apple remotes that look like this. If your remote is silver please refer to silver Apple Remote Instructions.



Some Basics:

Move around the screen: Swipe up, down, left, or right on the Touch surface.

Select an item: Press to click the Touch surface and use it as a button.

Return to the previous menu: Press the Menu button.

Return to the Home screen: Press the Home button.

Switch between apps quickly: Double press the Home button to see your recently used apps.



Turning on your Apple TV

Push the menu or home button on your remote to wake up the Apple TV.

Ready to go when white light is on.

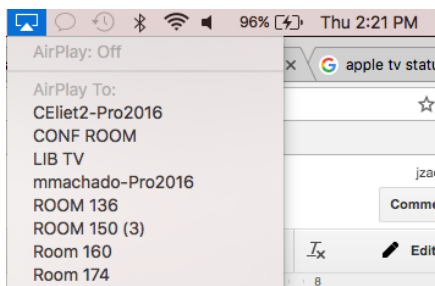
When you see the Home Screen Apple TV is ready to use.

If you do not see the Apple TV Home Screen:

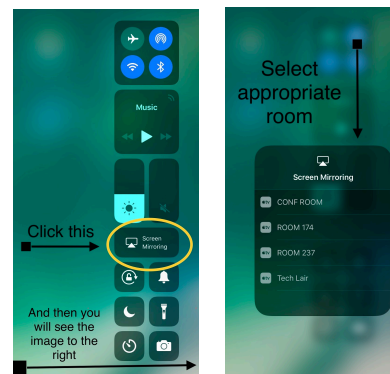
- Verify that the Apple TV status light is on
- Check that the input on the projector is set to HDMI 2. Use the source button on your projector remote to switch.

Connect your device via the AirPlay on your computer or iPad

On the **computer** select the room from the AirPlay drop down. See below:



On the **iPad**, swipe up from the bottom of the screen and scroll over to Screen mirroring on the left and select the appropriate room. See below:



APPLE TV INSTRUCTIONS - Black Remote

(Connecting your device to AirPlay continued)

- If you do not see the Apple TV in the AirPlay list restart your iPad or Computer
- Once you have established a connection and if you have issues with the Apple TV performance restart the Apple TV. To restart your Apple TV using your Apple TV remote select **Settings > General > Restart**
- **If restarting doesn't work, you can connect your iPad or Computer with an HDMI cable and change the input on your projector remote to Computer 1. If using an iPad you will need a Lightning Digital AV Adapter (Pictured below). If problems persist please contact the Tech Department.**



Tips:

- To charge your remote use the same cord as you use for your iPad and connect to your laptop or charger.
- If you see a home screen with Movies click the Menu button to exit that screen.

Other Suggestions:

- Always be prepared with iPad adaptor, Computer adapter, Apple TV remote, Projector Remote
- Get connected 5 minutes before class. This will give you time to troubleshoot if there are problems.
- If you are not familiar with the process, practice until you are comfortable
- If you still have questions, don't hesitate to make an appointment to practice with someone in the Tech Department.