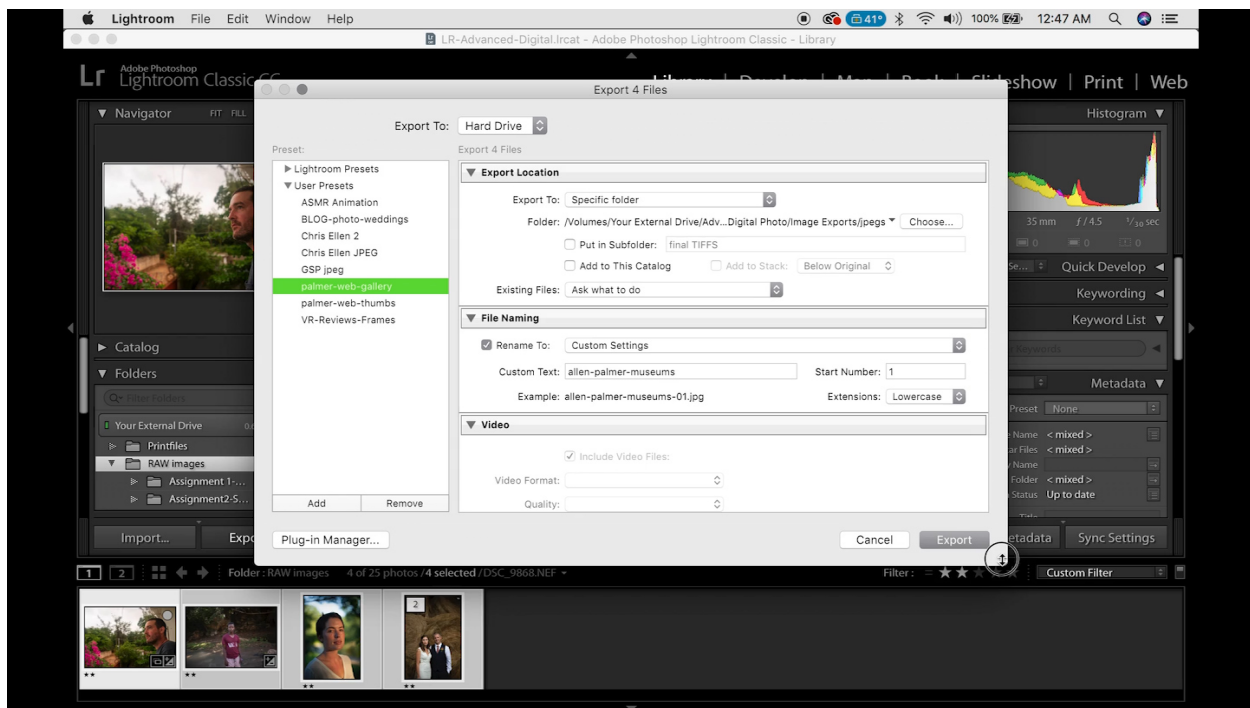


EXPORTING JPEGs from ADOBE LIGHTROOM

**You must be in the Library Module to Export JPEGs.*

- Select all of the images you want to export.
- Click “Export” in the bottom left of the Library Module. This pulls up the **Export Dialog box**.
- Make sure “Hard Drive” is selected from the top “Export To” dropdown.

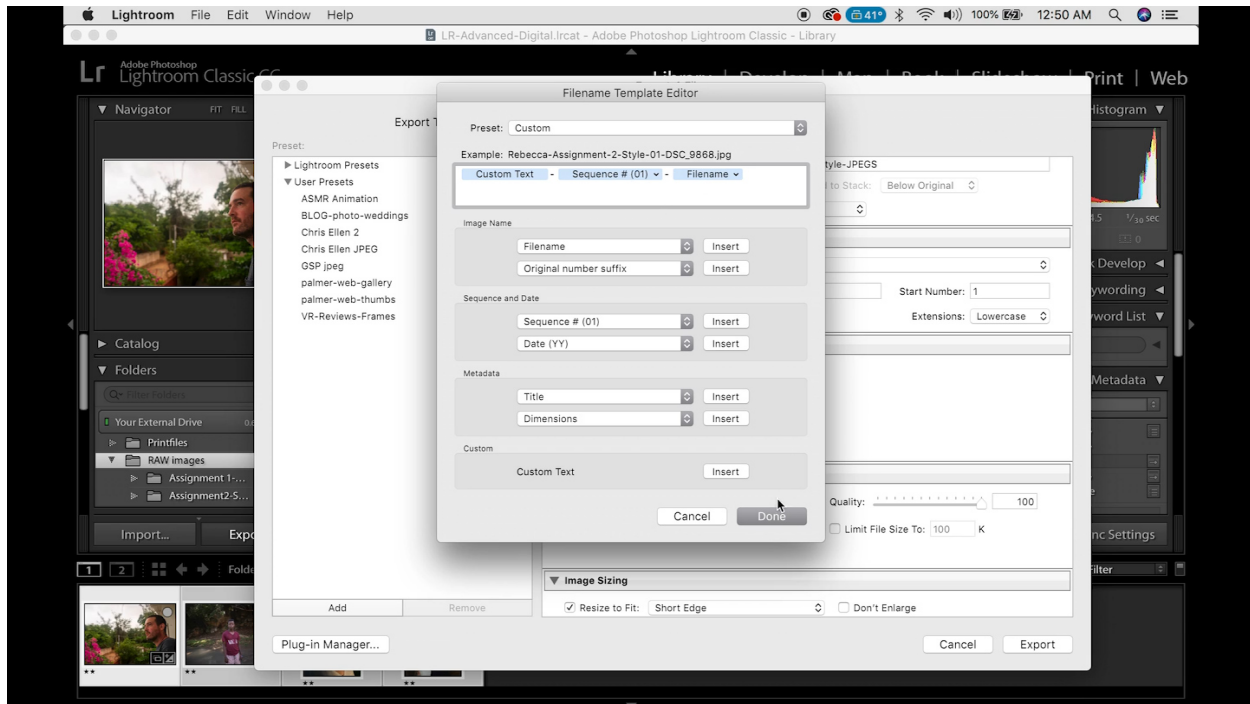


Export Location

1. Choose “**Specific Folder**” from the “Export To” drop-down.
2. Click “**Choose**” to pick the location on your hard drive (**Intro to Digital Photo → JPEGs**)
3. You can have Lightroom **make a new Subfolder** for you at this point: Check the box for “Put In Subfolder” and name it according to the assignment (or the week, or the shoot; example: “Assignment1-DoF”).
4. In the “Existing Files” drop-down, keep the default of “**Ask what to do.**” (This is so that Lightroom will ask before overwriting files of the same name, etc.)

File Naming

1. Check the box that says “**Rename To**”
2. In the “**Custom Text**” box, put your name (either first or last alone is fine) and the name of the assignment (Keep it simple: “Style.” DoF,” etc.) *Do not use spaces here, only dashes, underscores, or camelCase to separate words.*
3. Make sure that the “**Start Number**” is 1.
4. From the “**Custom Settings**” drop-down, choose “**Edit**” at the bottom, which will bring up the Filename Template Editor dialog box:



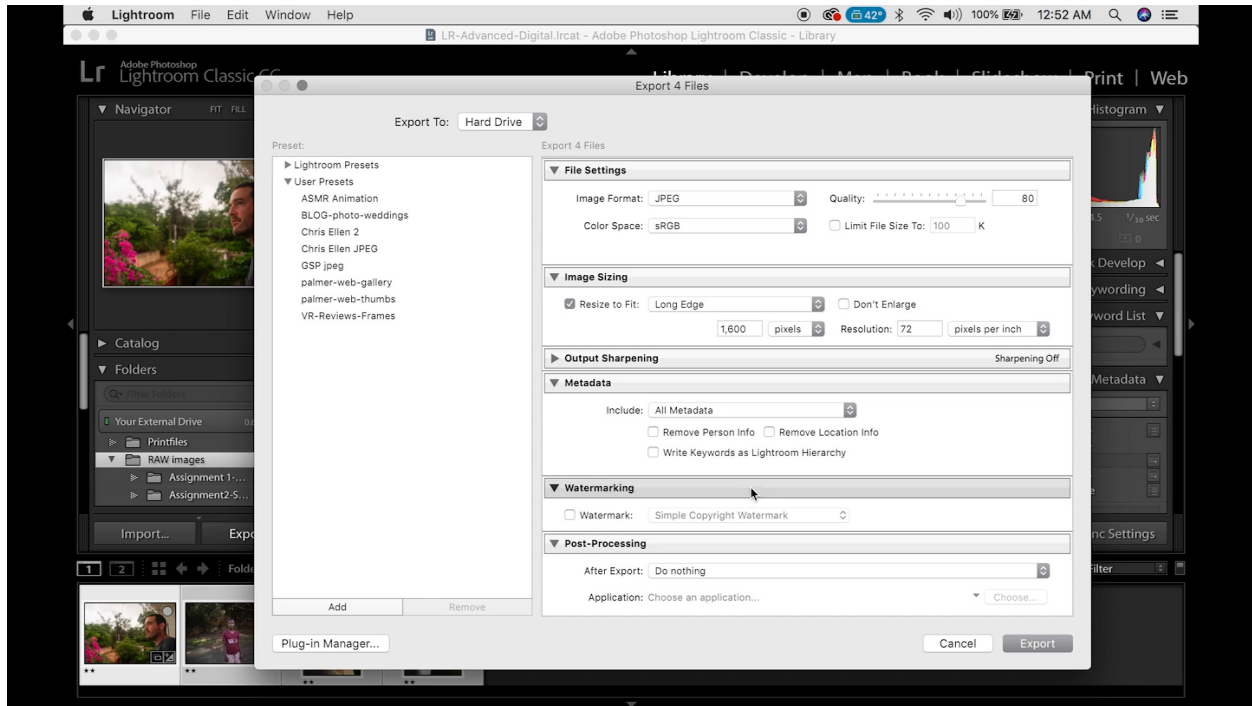
5. Insert “**Sequence 01**” and “**Filename**” into your naming template, with dashes between each element (click the “**Insert**” buttons to the right of these choices).

File Settings

1. Image Format = **“JPEG”**
2. Quality = **“80”** (Adds some compression for a lighter, faster file without losing much quality)
3. Color Space = **“sRGB”** (Must use lowest common denominator for consistency on the web)

Image Sizing

1. Check the box for **“Resize to fit”**
2. Choose **“Long Edge”** from the drop-down.
3. Type **“2000”** into the box and choose **“Pixels”** as the unit of measurement.



Remaining Sections

1. You can leave all Metadata intact.
2. No Output sharpening necessary.
3. Do NOT watermark.
4. No Post-processing necessary.
5. Before hitting “Export,” you can save these settings as a preset. Simply choose “Add” on the bottom left and name the preset (something like “JPEG 2000” or “Assignment JPEGs”).
6. Hit “Export” on the bottom right.