

MPPH301: Intro to Digital Photo  
Mass College of Art - PCE – Spring 2020  
Rebecca Morrison  
[ramorrison@massart.edu](mailto:ramorrison@massart.edu)  
3/26/20

## **EXPRESSIVE COLOR ASSIGNMENT**

Color photography has long been woven into the fabric of our culture. We see it used every day in advertising, fashion, and journalism, and also in the work of fine art photographers. Often the colors we observe in photographs simply seek to be a reflection of the world around us. In other instances, photographers use color in an expressive way, deliberately choosing a particular palette in order to convey mood and emotion.

Taking color snapshots often results in images with a wide range of colors from the real world. By making photographs with a limited and specific palette, we assume more control over the emotional and expressive qualities of our imagery. The best examples of this approach illustrate the artist's intent through the way the colors within the photograph interact with one another. They also affect the way in which viewers interact with the overall image.

The use of expressive color and a reduced palette is not limited to still photography. We also see it in film and video, as well as in the long history of painters' use of color in their work.

### **\*ASSIGNMENT:**

*Make 50-100 images using a limited and expressive color palette to convey the mood or emotion of your choice. Base your palette on the work of one of the following artists, or another artist of your choice (photographer, painter, sculptor, or filmmaker), attempting to reduce your palette to a maximum of three main colors.*

### **SAMPLE ARTISTS:**

- 1.) Fine Art Portrait Photographer **Joyce Tenneson**
- 2.) Advertising, Fashion and Portrait Photographer/Filmmaker **David LaChapelle**
- 3.) Filmmaker **Sofia Coppola** (from *Marie Antoinette*, 2006)
- 4.) Color Field Painter **Mark Rothko**
- 5.) The *Blue Period* (1900-1904) of **Pablo Picasso**

*The goal of the assignment is not to copy or reproduce the work of these artists. The idea is to draw inspiration from their work, particularly their use of color and their specific palettes.*

*The tricolor samples provided on each attached artist's page are merely suggestions. You may choose three colors on your own to use in your images, as long as they are taken from your chosen artist's overall palette.*

# Joyce Tenneson



## TRICOLOR SAMPLES



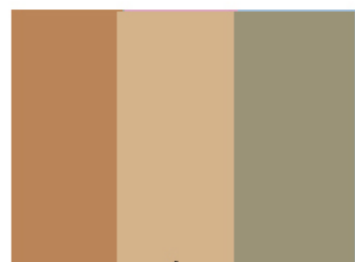
**1**



**2**



**3**



**4**

# David LaChapelle



**I**



**2**



**3**

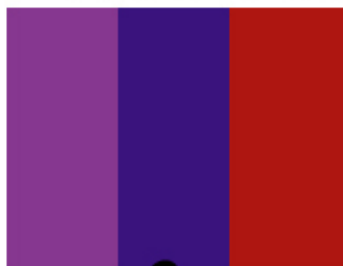


**4**

## TRICOLOR SAMPLES



**I**



**2**



**3**



**4**

# Sofia Coppola's *Marie Antoinette*



I



2



3



4

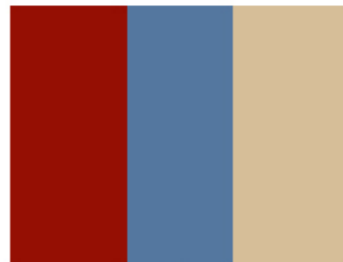
## TRICOLOR SAMPLES



I



2



3



4

# PICASSO'S BLUE PERIOD



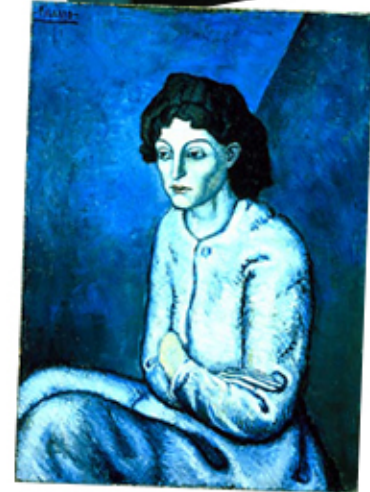
1



2



3



4

## TRICOLOR SAMPLES



1



2



3



4

# MARK ROTHKO's COLOR FIELD PAINTINGS



1



2



3



4

## TRICOLOR SAMPLES



1



2



3



4