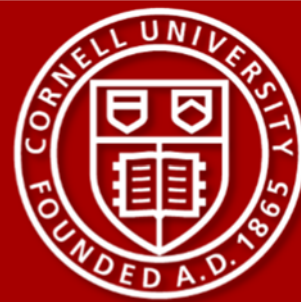


Comell Cooperative Extension North Country Regional Ag Team



Preventing Sexual Harassment on Farms- Tools for Employers:

Updates and Resources for the NYS Sexual Harassment Regulations.

Dates: July 29th & July 30th

Cost: \$10 (to be paid to each office directly)

Time: 10:00AM-1:00PM

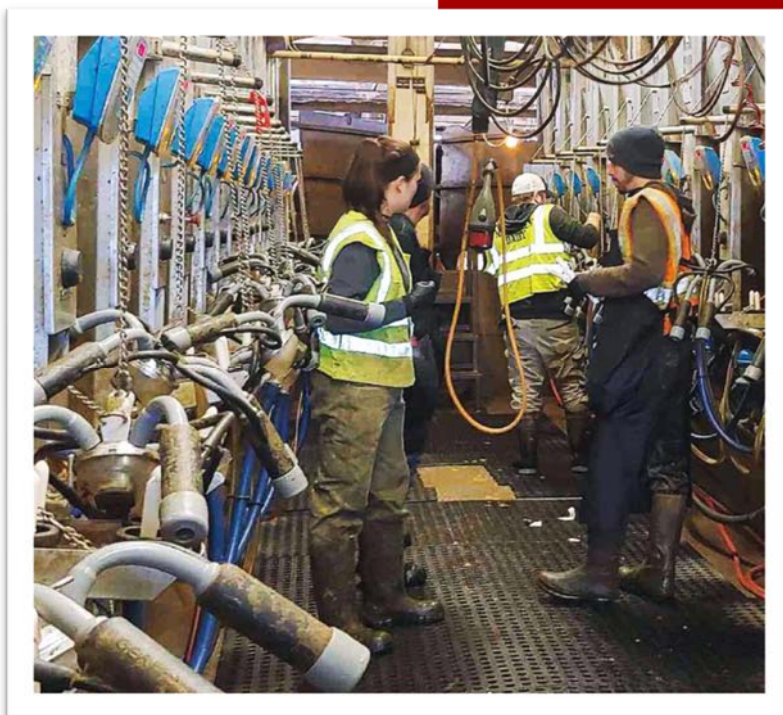
Locations: Speakers will be located across the state and connected via Zoom. Each extension office listed will have the Zoom Meeting Projected and a light lunch provided. Farmers will be able to ask real time questions and engage with other farmers. **PLEASE REGISTER BY FRIDAY JULY 26th.**

July 29th-

Lewis County Cooperative Extension Office
St Lawrence County Cooperative Extension Office
Clinton County Cooperative Extension Office
Onondaga County- Farm Credit East, One Technology Pl, Homer, NY 13077
Orleans County Cooperative Extension Office
Yates County Cooperative Extension Office
Schoharie County Cooperative Extension Office
Chemung County Cooperative Extension Office
Herkimer County Cooperative Extension Office

July 30th-

Jefferson County Cooperative Extension Office
Essex County Cooperative Extension Office
Franklin County Cooperative Extension
Cortland County- Dryden Fire Hall, 26 North St, Dryden, NY 13053
Wayne County Cooperative Extension Office
Livingston County Cooperative Extension Office
Chenango County Cooperative Extension Office
Tioga County Cooperative Extension Office
Saratoga County Cooperative Extension Office
Fulton/Montgomery Cooperative Extension Office
Madison County Cooperative Extension Office



Registration Link:

<https://forms.gle/duASeZ35oqP1e28M9>

Recording of this will be made available on July 31st.

10:00-10:15- **MARY-KATE WHEELER** *Introduction to the New Rules: Overview, deadlines, and dates.*
10:15-11:00- **RICHARD STUP** *Resources Available from Extension: How to use reviewed case studies.*
11:00-11:30- **KELSEY O'SHEA** *Legal Concerns: Compliance, implications, and risks.*
11:30-12:00- Lunch/Break
12:00-12:30- **LIBBY EIHOLZER** *Outside Materials: Other agencies resources, risks and concerns.*
12:30-1:00- **NICOLE TOMMELL** *Closing Remarks: Summarizing action items, updates on other labor research.*

The North Country Regional Ag Team is a Cornell Cooperative Extension partnership between Cornell University and the CCE Associations in Jefferson, Lewis, St. Lawrence, Franklin, Clinton, and Essex counties.

Cornell Cooperative Extension is an employer and educator recognized for valuing AA/EEO, Protected Veterans, and Individuals with Disabilities and provides equal program and employment opportunities.