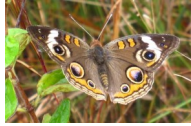


About the LINPI Native Plant Symposium...



"Rooted in Long Island's Past, Present and Future: 10 Years and Growing..."

The 2015 Native Plant Symposium celebrates the 10 year milestone since LINPI took "root" as a small group of dedicated and ambitious volunteers. Through community support and coordination from the Suffolk County Soil and Water Conservation District, this founding cooperative, as the Long Island Native Grass Initiative was truly a grass roots effort that has grown and bloomed into the Long Island Native Plant Initiative.

At this 3rd Symposium, LINPI celebrates the successes, milestones, and growth as we continue to expand the dialogue on the ecological importance of ecotypic plant materials. Presenters will demonstrate the successful incorporation of natives into business practices and support the ever increasing demand for regional native plant materials. Nursery and landscape industry professionals, landscape architects, land managers, government agencies, public officials, supervisors, students and plant enthusiasts are encouraged to attend.



The Long Island Native Plant Initiative (LINPI), is 501(c)(3) non-profit organization formalized in 2012 whose mission is to protect regional plant populations by providing initial sources of genetically local (ecotypic) native plant materials to further commercial native plant propagation activities.

LINPI's volunteers conduct field collections, seed cleaning, and applied standard plant propagation for over 40 common native plant species. Commercial seed production is advanced with standard bulkseed production activities. Commercial releases of Source Identified Certified Little bluestem, (*Schizachyrium scoparium*), Big bluestem (*Andropogon gerardii*), and Switchgrass (*Panicum virgatum*) was recognized in partnership with Ernst Conservation Seed for the use in restoration and plant production. LINPI seed is banked at the Greenbelt Native Plant Center of NYC Department of Parks, effectively establishing the first partnership of the Mid-Atlantic Regional Seed bank (MARS-B). Annual sales of ecotypic native, propagated from wild collected seed, serve as fundraiser for LINPI and a means to supply the nursery industry with seedlings to support and diversify their native plant production.

All of LINPI's efforts are intentionally focused on harvesting seed in a genetically and ecologically sensitive manner, in order to capture the population's genetic variability while minimizing impact to ecological processes and wildlife. Through annual plant sales, diversification of targeted plant materials, contract growing, and grant writing, LINPI continues to successfully serve as the mechanism to identify and collect seed from the wildlands of Long Island for commercial plant production. As such, the preservation of the genetic heritage of Long Island's native plant populations and biodiversity at a molecular level, continue to go to seed!



Long Island Native Plant Initiative



Rooted in Long Island's Past, Present and Future...10 Years And Growing

Native Plant Symposium
October 24, 2015

Hosted by

**Farmingdale
State College**

State University of New York

**Department of Urban
Horticulture and Design**

**Keynote Speaker:
Ms. Heather Holm**

Author of

**"Pollinators of Native Plants:
Attract, Observe and Identify Pollinators
and Beneficial Insects with Native Plants"**

**Certified Nursery & Landscape, NYS DEC, LA,
NOFA Credits Pending**

Long Island Native Plant Initiative
PO Box 1279
Hampton Bays, New York 11946



Long Island Native Plant Symposium Registration

Rooted in Long Island's Past, Present, and Future... 10 Years and Growing

Registration

Advanced Registration Required
(One Registration Form per Person)

Register online: <http://LINPI.org> or :

Name: _____

Organization: _____

Address: _____

Email: _____

Phone: _____

Individual (\$75.00) \$ _____

Student Rate (\$30.00) \$ _____

Yes, I would like to make a tax deductible donation to LINPI. \$ _____

Total Enclosed \$ _____

The Long Island Native Plant Initiative Inc. is a 501(c)(3) non-profit organization. All donations are tax exempt to the fullest extent of the law and all donations and proceeds of the symposium advance the goals, objectives and mission of this progressive organization.

Please make checks payable and mail to:
Long Island Native Plant Initiative (LINPI) Inc.
Po Box 1279
Hampton Bays, New York 11946
Questions: info@LINPI.org (631) 560-9945



BECOME A LINPI VOLUNTEER!

LINPI relies the expertise of the community to advance our seed banking, public education and plant production. We host numerous volunteer opportunities throughout the year including seed collection, cleaning and propagation to office assistance, grant writing, and educational events.

Yes, Sign me up! I would like to be a LINPI Volunteer!

2015 Long Island Native Plant Symposium

Saturday, October 24, 2015

Farmingdale State College 2350 Broad Hollow Road, Farmingdale, NY

- 8:00 a.m. - 8:45 a.m. Registration (Roosevelt Hall) - Continental Breakfast & Visit Exhibitors
- 8:45 a.m. - 9:00 a.m. Welcome
- 9:00 a.m. - 10:15 a.m. Keynote Speaker: *Pollinators of Native Plants* -Heather Holm—
Author& Landscape Designer, Heather Holm Design and Consulting, Minnetonka, MN
- 10:15 a.m. - 10:30 a.m. Break
- 10:30a.m. - 11: 15 a.m. *Planting Natives: Right Species, Right Sources*—Greg Houseal -
Program Director: Tallgrass Prairie Center, University of Northern Iowa Cedar Falls, IA
- 11: 15 a.m. - 11:45 a.m. *Maritime Forest of Fire Island National Seashore*—Jordan Raphael -
Biologist- Fire Island National Seashore, National Park Service, Patchogue, NY
- 11:45 a.m. - 12:30 p.m. *Sustainable landscaping with Novel Native Shrubs*—Dr. Jessica Lubell
Associate Professor of Horticulture, University of Connecticut, Storrs, CT
- 12:30 p.m.- 1:30p.m. Lunch (*provided*) and Trade Show - Please Support our Sponsors!

Breakout Afternoon Concurrent Sessions

Session A

Designing with Native Plants

1:30p.m.— 2:30 p.m. *LI Rain Gardens*
Rusty Schmidt, Landscape Ecologist
Nelson, Pope & Voorhis, Melville, NY

2:30 p.m. - 2:45p.m. Break

2:45 p.m. - 3: 45 p.m. *Strategies for Building Amazing Native Landscapes* - Mark Brownlee,
Principle Designer and Landscape Consultant
ArcheWild, Quakertown, PA

3:45 p.m. - 4:30 p.m. *Meandering Meadows for Your Messy Metropolis*, Tamsen Yeh,
Turf and Land Management Specialist,
Cornell Cooperative Extension of Suffolk County,
Riverhead, NY

Session B

Growing and Marketing Native Plants

1:30 p.m.— 2:30 p.m. *A Native Perspective*
Ken Parker - Project Director and Horticultural Native
Plant Consultant, The Seneca Nation of Indians, Irving, NY

2:30 p.m. - 2:45 p.m. Break

2:45 p.m. - 3: 45 p.m. *Native Plants: Personality Traits, Availability, And—Yes—Uses.*
Dan Segal The Plantsmen Nursery, Ithaca, NY

3:45 p.m. - 4:30 p.m. *Local Opportunities and Needs to Incorporate Ecotypic Production Round Table Discussion*
Moderator: Chris McHugh, Production Manager, LINPI

Panelists: Greg Houseal ♦ Dan Segal ♦ Ken Parker ♦ Polly Weigand Executive Director, LINPI ♦ Jeremy LaPointe Nursery Manager, NYC Greenbelt Native Plant Center

4:30 p.m. — LINPI 10 Year Anniversary Celebration
A Wine and Cheese Reception