

# Extending Voting Rights to RTE Faculty

A Resolution Sponsored by the UFC

November 14, 2018

The resolution is based on recommendations made by the Committee on Academic Titleholder Representation.

Members: Adeolu Ademoyo, Stephane Bentolila, Elizabeth Bunting, Brenda Dietrich, Aliqae Geraci, Roger Gilbert, Kimberly Kopko, Bruce Lauber, Estelle McKee, Bruce Monger, Pilar Thompson, Charles Van Loan (Chair), and Makda Weatherspoon.

# Definition of University Voting Rights

1. You can serve in the Senate and vote for Senators.
2. You can also participate in elections that determine
  - (a) The Faculty Trustees
  - (b) The Dean of Faculty
  - (c) The Associate Dean of Faculty
  - (d) The University Faculty Committee
  - (e) The Nominations and Elections Committee

# University Voting Rights: Current

<b>Professor (all ranks)</b>	<b>1582</b>
<b>Emeriti</b>	<b>619</b>
<b>University Professor</b>	<b>0</b>
<b>Professor-at-Large (in residence)</b>	<b>17</b>

<b>Visiting Professor (all ranks)</b>	<b>168</b>
<b>Adjunct/Acting Professor (all ranks)</b>	<b>258</b>
<b>Instructor</b>	<b>11</b>
<b>Teaching Associate</b>	<b>9</b>
<b>Visiting Instructor/Lecturer</b>	<b>131</b>
<b>Visiting Critic</b>	<b>33</b>
<b>Visiting Scholar/Scientist</b>	<b>168</b>
<b>Visiting Fellow</b>	<b>164</b>

<b>Research Professor (all ranks)</b>	<b>11</b>
<b>Clinical Professor (all ranks)</b>	<b>32</b>
<b>Professor-of-the-Practice (all ranks)</b>	<b>23</b>

<b>Research Scientist (both ranks)</b>	<b>9</b>
<b>Research Associate (both ranks)</b>	<b>324</b>
<b>Extension Associate (both ranks)</b>	<b>225</b>
<b>Lecturer (both ranks)</b>	<b>330</b>
<b>Senior Scientist/Scholar</b>	<b>3</b>

<b>Librarian (all ranks)</b>	<b>96</b>
<b>Archivist (all ranks)</b>	<b>15</b>

# University Voting Rights: Proposed

<b>Professor (all ranks)</b>	<b>1582</b>
<b>Emeriti</b>	<b>619</b>
<b>University Professor</b>	<b>0</b>
<b>Professor-at-Large (in residence)</b>	<b>17</b>

<b>Visiting Professor (all ranks)</b>	<b>168</b>
<b>Adjunct/Acting Professor (all ranks)</b>	<b>258</b>
<b>Instructor</b>	<b>11</b>
<b>Teaching Associate</b>	<b>9</b>
<b>Visiting Instructor/Lecturer</b>	<b>131</b>
<b>Visiting Critic</b>	<b>33</b>
<b>Visiting Scholar/Scientist</b>	<b>168</b>
<b>Visiting Fellow</b>	<b>164</b>

<b>Research Professor (all ranks)</b>	<b>11</b>
<b>Clinical Professor (all ranks)</b>	<b>32</b>
<b>Professor-of-the-Practice (all ranks)</b>	<b>23</b>

<b>Research Scientist (both ranks)</b>	<b>9</b>
<b>Research Associate (both ranks)</b>	<b>324</b>
<b>Extension Associate (both ranks)</b>	<b>225</b>
<b>Lecturer (both ranks)</b>	<b>330</b>
<b>Senior Scientist/Scholar</b>	<b>3</b>

<b>Librarian (all ranks)</b>	<b>96</b>
<b>Archivist (all ranks)</b>	<b>15</b>

Colleges not obliged to follow the same rules.

# The **University** and **RTE** Faculties

<b>Professor (all ranks)</b>	1582
<b>Emeriti</b>	619
<b>University Professor</b>	0
<b>Professor-at-Large (in residence)</b>	17

<b>Visiting Professor (all ranks)</b>	168
<b>Adjunct/Acting Professor (all ranks)</b>	258
<b>Instructor</b>	11
<b>Teaching Associate</b>	9
<b>Visiting Instructor/Lecturer</b>	131
<b>Visiting Critic</b>	33
<b>Visiting Scholar/Scientist</b>	168
<b>Visiting Fellow</b>	164

<b>Research Professor (all ranks)</b>	11
<b>Clinical Professor (all ranks)</b>	32
<b>Professor-of-the-Practice (all ranks)</b>	23

<b>Research Scientist (both ranks)</b>	9
<b>Research Associate (both ranks)</b>	324
<b>Extension Associate (both ranks)</b>	225
<b>Lecturer (both ranks)</b>	330
<b>Senior Scientist/Scholar</b>	3

<b>Librarian (all ranks)</b>	96
<b>Archivist (all ranks)</b>	15

# What the Senate Would Look Like

1. The 90+ academic-unit seats and 9 At-Large seats filled by voting members of the University Faculty **or the RTE Faculty.**
2. **Approximately 20 RTE-designated Senate seats, apportioned among the colleges.**
3. **1 RTE-designated Senate seat filled by Cornell University Library.**
4. 1 Ex Officio seat each for the SA, GPSA, EA, ROTC, **and the postdoc community.**
5. 1 Senate seat designated for Emeriti and picked by Cornell Academics and Professors Emeritus.

# College RTE Senators

A college gets 1 RTE Senator if it has  $\leq 25$  voting RTE's.

A college gets 2 RTE Senators if it has  $> 25$  voting RTE's.

A college gets 3 RTE Senators if it has  $> 100$  voting RTE's.

College	Number of Voting RTE Faculty	Number of College RTE Seats
CALS	295	3
AAP	4	1
CAS	273	3
SCB	44	2
CIS	15	1
COE	56	2
CHE	68	2
ILR	45	2
LAW	19	1
VET	123	3
	<b>942</b>	<b>20</b>

College RTE Senators are elected by their college.

# Why Do This?

1. We should practice the shared governance that we preach because it (a) communicates respect, (b) inspires participation, and (c) leads to more informed decisions.
2. There are couplings between the long-term health of the tenure system and the long-term health of the academic tracks that surround it. Oversight of these interconnections is the responsibility of the Faculty Senate.



# Timeline for the Faculty

- September** Public commenting on the preliminary recommendations via the [Committee Website](#)
- November** Final Committee recommendations encoded in a resolution.
- December** The Senate votes on the (possibly modified) resolution.
- Jan-Feb** What passes the Senate is packaged and presented to the University Faculty as a referendum.
- After** What's approved by the University Faculty is enacted.

# The Resolution is About 11 Changes to the OPUF

For example, here is modification #7 that deals with the election of the DoF:

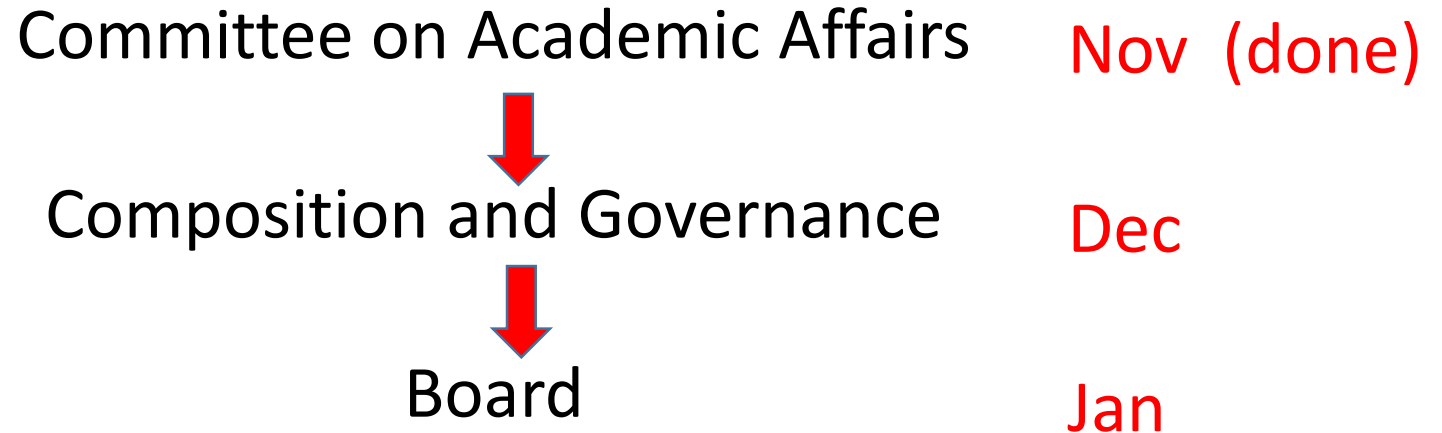
The Committee on Nominations and Elections shall conduct a mail ballot of the voting members of the University ~~Faculty~~ **and RTE Faculties**, using the Hare System, and shall promptly report the results to the President and the ~~Faculty~~ **electorate**.

OPUF = Operating Principles of the University Faculty, a bylaw-type doc that, among other things, specifies how the senate and elections are to work.

# Timeline for Trustees

Two changes to University Bylaws are required:

1. The University Faculty needs explicit authority to determine the membership of the Faculty Senate.
2. The electorate for Faculty Trustee needs to include the RTE Faculty.



## **Principle throughout the entire proposal**

**NO CHANGES TO THE DEFINITION OF UNIVERSITY FACULTY AND NO REDUCTION OF ITS STATUS OR AUTHORITY.**