

Slugs



- We smell with our bodies
- We have green blood
- We have more teeth than a shark
- We can glide over broken glass
- We can drag 50 times our body weight and travel over 12 miles a night
- We protect ourselves with slime, not fur or feathers

**Don't
sell us
short!**



We decompose decaying plants

We spread seeds and spores

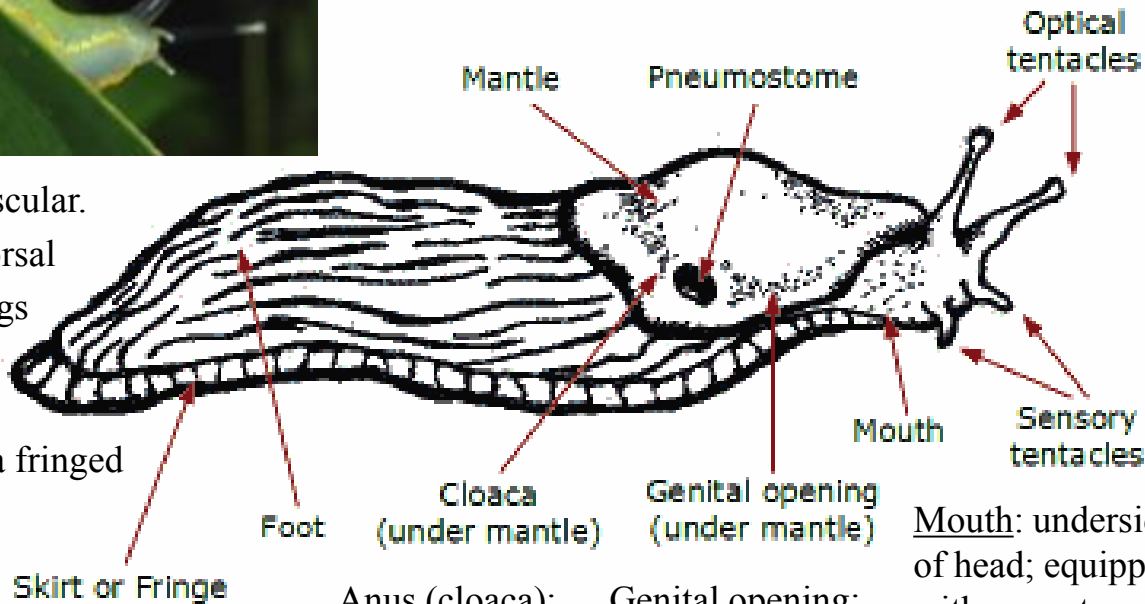
We control other pests



Mantle:
fleshy lobe
that secretes
materials for
making a shell

Pneumostome:
hole leading to
the lungs

Foot: broad and muscular.
Full length of the dorsal
surface. Enables slugs
to attain top speeds
of 0.025 miles/hr.
Some species have a fringed
rippling skirt.



Tentacles:
(not antennae).
Long optic
tentacles with tiny
light sensitive eyes

Short sensory
tentacles for felling
or smelling

Mouth: underside
of head; equipped
with raspy tongue
and many teeth

Anus (cloaca):
under a flap on
right side of
mantle

Genital opening:
Under the right
side of mantle.
Three ducts; one
to release sperm,
one to release
eggs, one to
receive sperm

Slug Anatomy



Slime

- Comes from a gland right behind the head at the front of the foot.
- Slime increases traction...
- Or it can help us attach to rocks and walls.

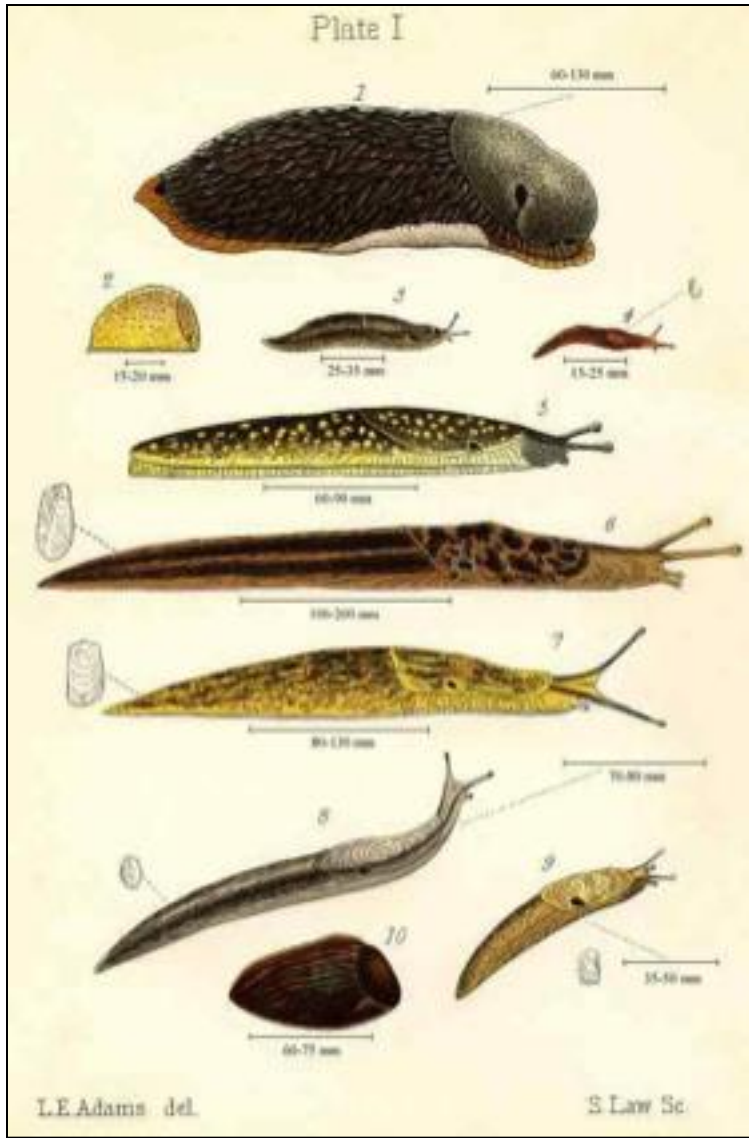
We are NOT Snails!

Snails have a hard shell made of calcium



So they don't dry out

To protect them from predators



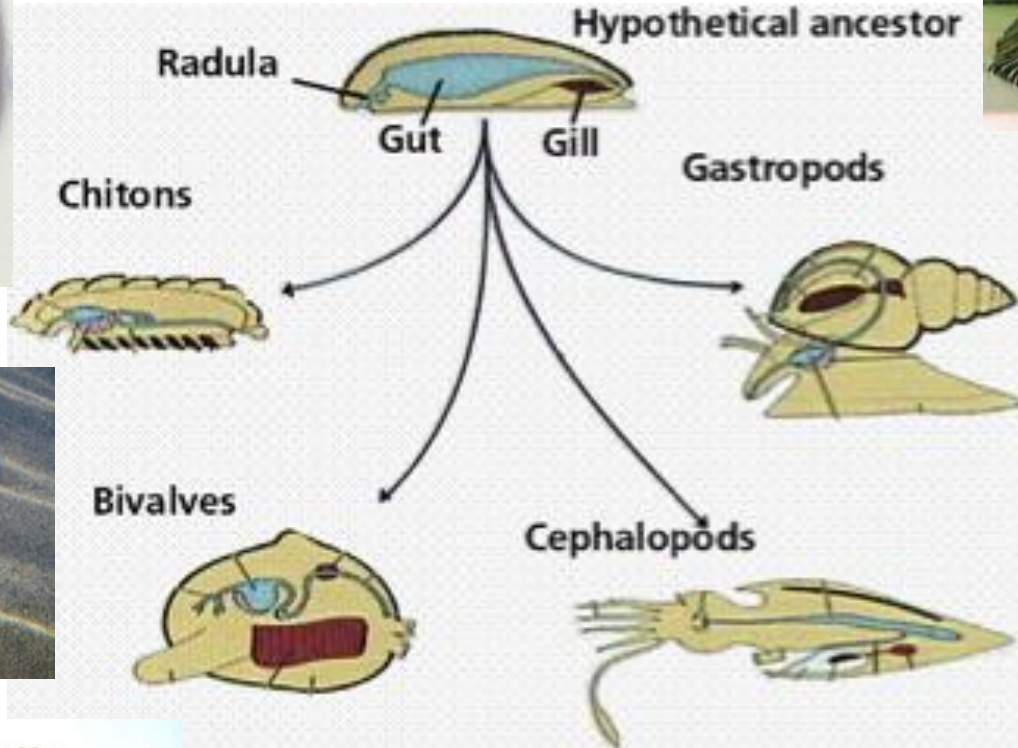
Family Album

- We are in the phylum mollusca (mollusks).
- We're one of the few mollusks that live on land so we have lungs not gills.
- We are in the class gastropoda which means "stomach foot."

Our Mollusk Relatives



Chitons



Sea Snails



Tusk Snail



Snails

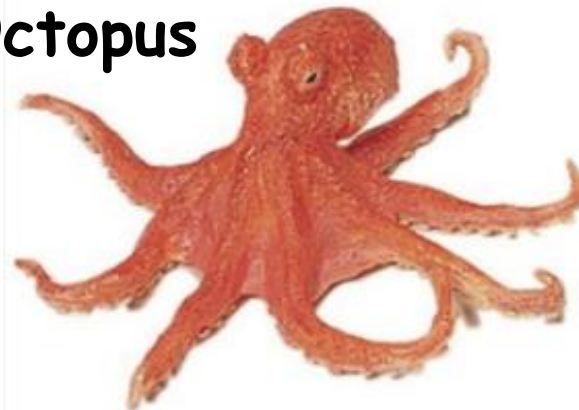


Clams



Scallops

Octopus



Squid



Slug Sex



One species copulates in midair, suspended by a stretchy strand of mucus up to nearly 18 inches long. To separate, one of us may need to gnaw off our partner's penis.



We are hermaphrodites, so we can mate with anyone—including ourselves.

Foreplay lasts for hours with bouts of lunging, nipping, and sideswiping with our tails.

We are extremely well-endowed. Our penis is nearly half our body length!