

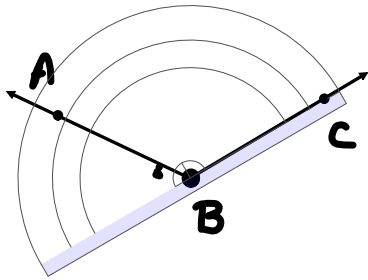
5-13-19

Aim: SWBAT use a protractor to measure given angles and construct specific angles.

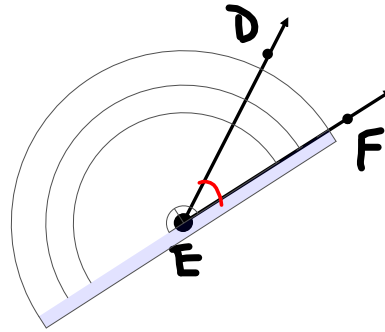
HW: None

Do Now: Pencil and Protractor

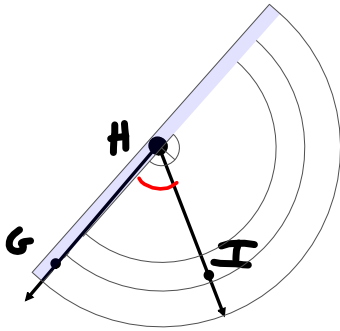
Use a protractor to measure each angle.



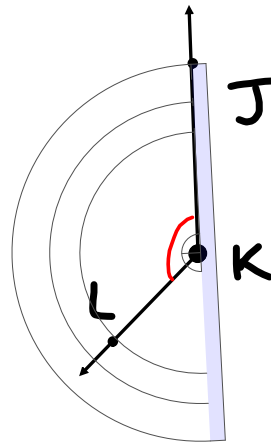
$$m\angle ABC = \underline{135}^\circ$$



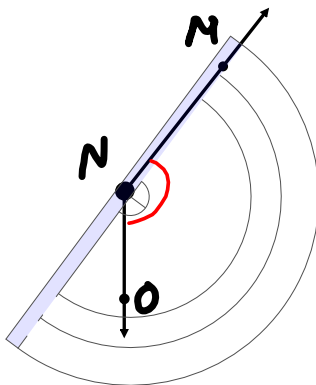
$$m\angle DEF = \underline{30}^\circ$$



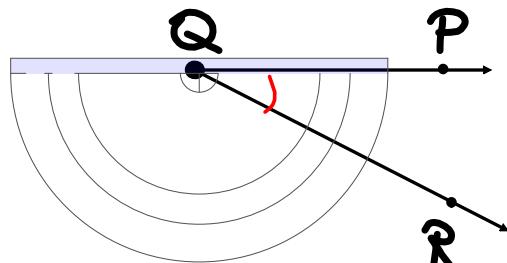
$$m\angle GHI = \underline{70}^\circ$$



$$m\angle JKL = \underline{130}^\circ$$

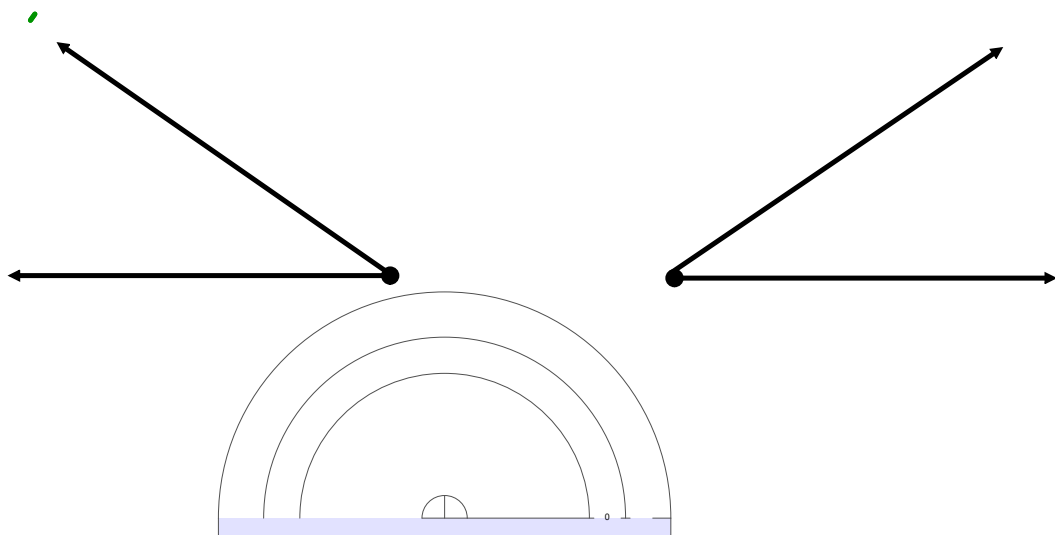


$$m\angle MNO = \underline{135}^\circ$$

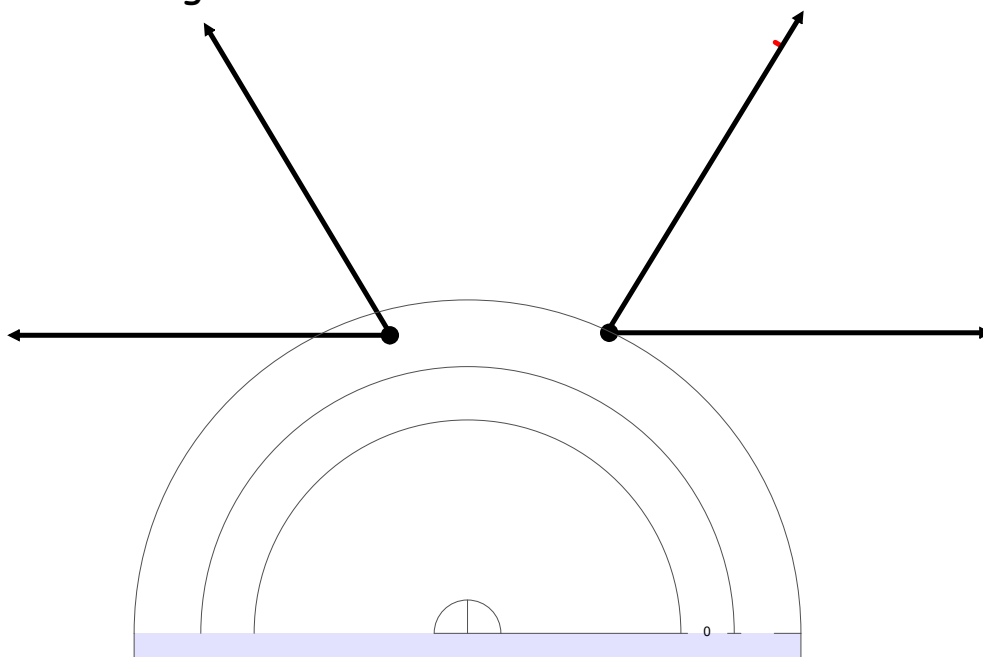


$$m\angle PQR = \underline{25}^\circ$$

Construct two angles that are 35° .



Construct two angles that are 60° .



Construct two angles that are 90° .

