

5-2-19

Aim: SWBAT construct prisms and pyramids and investigate their features.

HW: [Finish Packet Page 9](#)

Do Now: Form groups and get materials

**Aim:** SWBAT construct prisms and pyramids and investigate their features.

**Do Now:** What are some differences between 2-dimensional and 3-dimensional figures?

Complete each table and sentence.

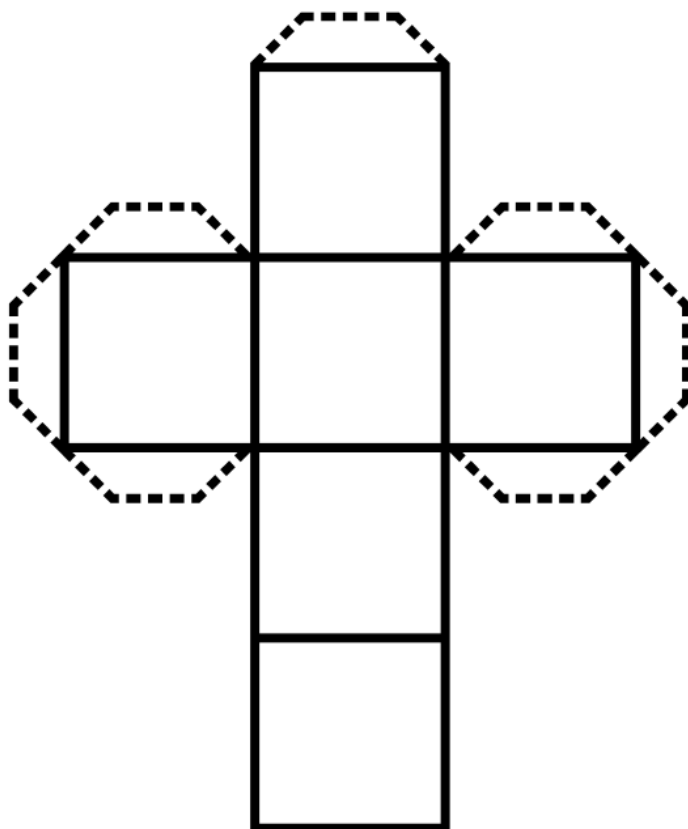
Prism	# of Bases	Shape of Base(s)	# of Faces	Shape of Faces
Cube				
Rectangular Prism				
Triangular Prism				
Pentagonal Prism				
Octagonal Prism				

A prism has \_\_\_\_\_ base polygons and as many \_\_\_\_\_ (usually rectangles) as the polygonal bases have sides.

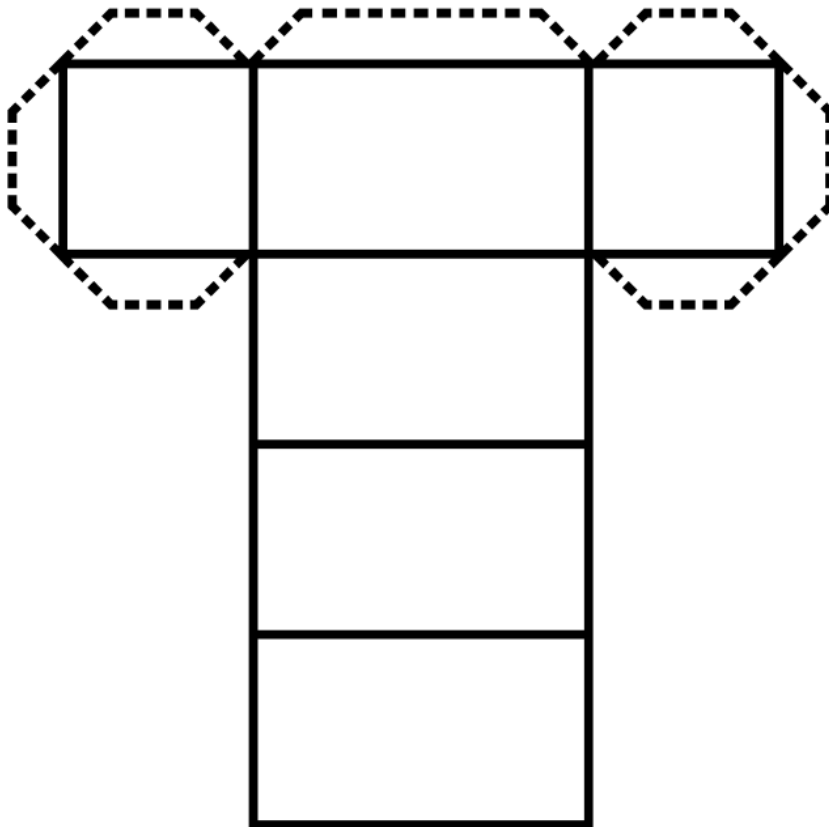
Pyramid	# of Bases	Shape of Base(s)	# of Faces	Shape of Faces
Triangular Pyramid				
Square Pyramid				
Rectangular Pyramid				
Pentagonal Pyramid				
Octagonal Pyramid				

A pyramid has \_\_\_\_\_ base polygon and as many \_\_\_\_\_ as the polygonal base has sides.

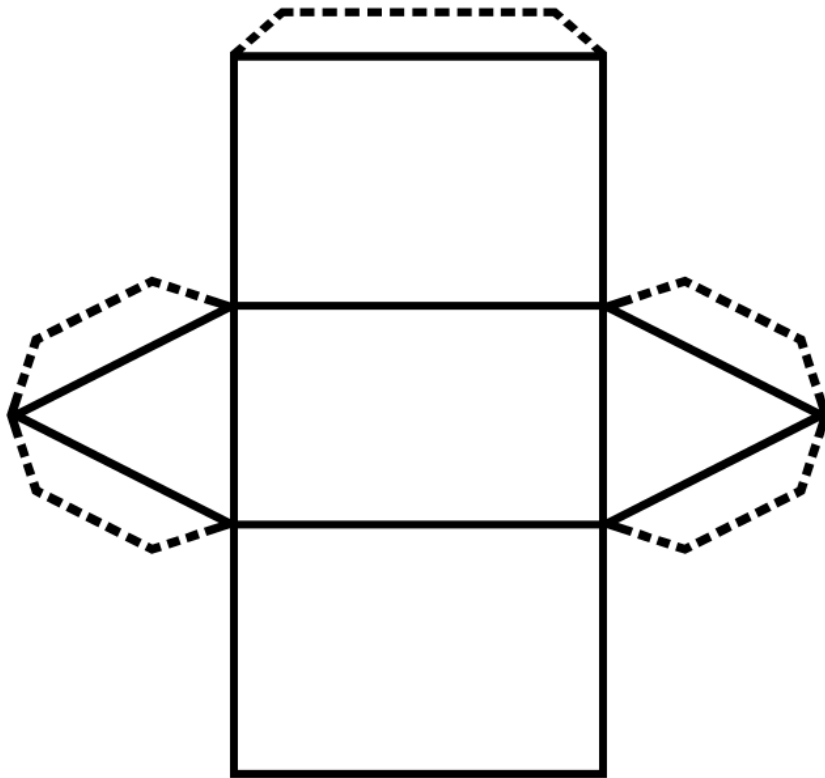
# Net of a Cube



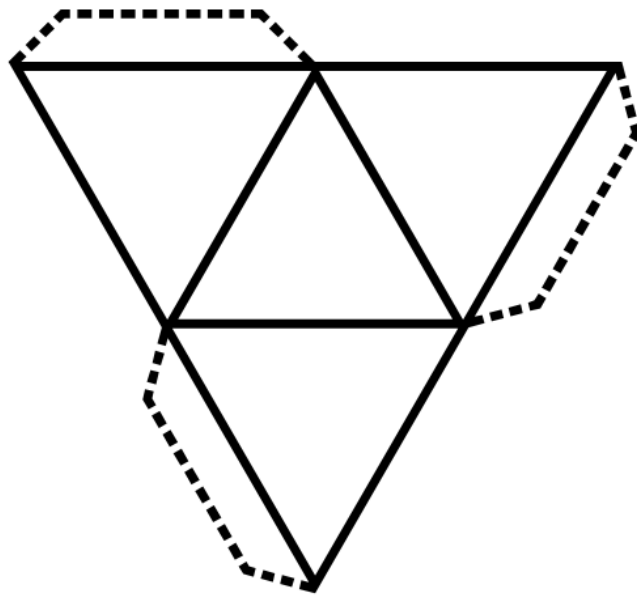
# Net of a Rectangular Prism



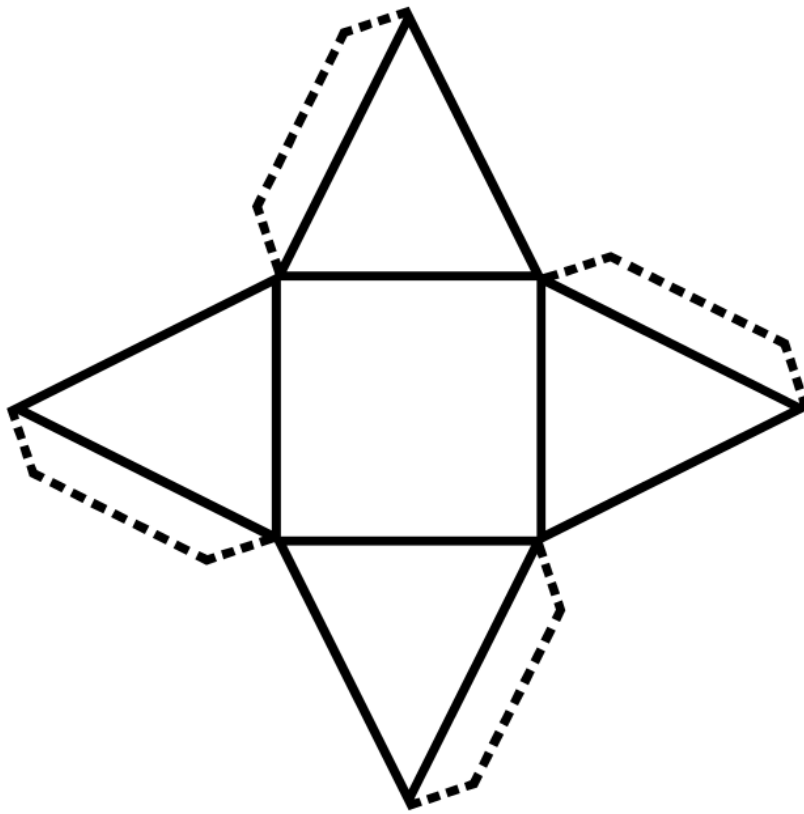
# Net of a Triangular Prism



# Net of a Triangle-Based Pyramid



# Net of a Square-Based Pyramid



# Net of a Pentagon-Based Pyramid

